

O.D.O.T. DISTRICT 2 SURVEY OFFICE (USE ONLY)

PERSONNEL

REFERENCE NO. 53

SHEET 11 OF 34

NOTES RHOADES

DATE 8/24/22

ROUTE SR 53

H.C. NIESE

WEATHER SUNNY

COUNTY OTTAWA

R.C. AUBLE

TEMP. 78°

TOWNSHIP CATAWBA

SECTION 4-28

DWG BY RHOADES

PID 102905

CONNECTICUT WESTERN RESERVE

TYPE MONUMENT MAG/WASHER

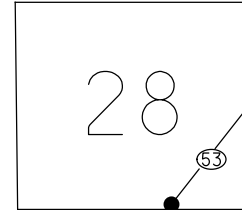
NOTE:
THIS MAP IS FOR ODOT PURPOSES ONLY.
TO INDEX REFERENCE TIES, AND DOES NOT
REPRESENT TRUE LAND SUBDIVISION.

ON SURFACE - ~~BELOW~~ ON

OFFSET Q PAVEMENT ON LT : RT

12.6' TO LT EDGE PAVEMENT

STATION: 783+91.3



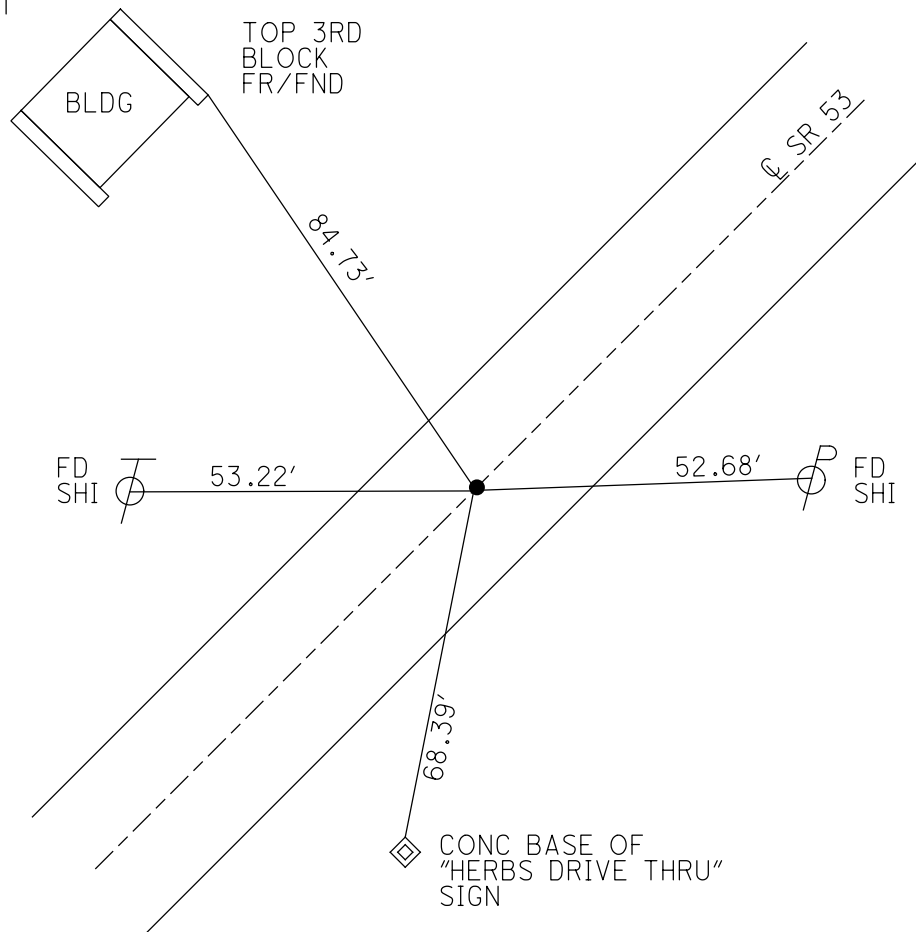
HORIZ.DATUM: NAD83 2011

GEOID: NAVD88 2018

GRID: NORTHING: 685925.541

EASTING: 1874452.516

RECORD: S.T.
STA. 711+17.47
FD R.R.SPIKE SHAFT
6/12/95
SET P.K./WASHER
5/30/96, CL
FD P.K.NAIL
REF53
8/25/11, DCH
SET MAG/WASHER
NEWREF53
7/30/12, DCH
FD MAG/WASHER
3/4/21, JFO
SET MAG/WASHER
5/15/22, TDN



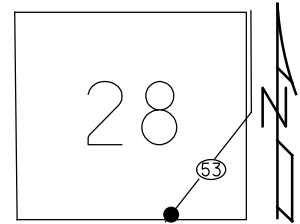
O.D.O.T. DISTRICT 2 SURVEY OFFICE (USE ONLY)

PERSONNEL _____ REFERENCE NO. 53 SHEET 14 OF 36
 NOTES HOMAN DATE 8/25/11 ROUTE SR 53
 H.C. HOMAN WEATHER CLOUDY COUNTY OTTAWA
 R.C. HARBAUGH TEMP. 80° TOWNSHIP CATAWBA ISL
 _____ SECTION 4-28

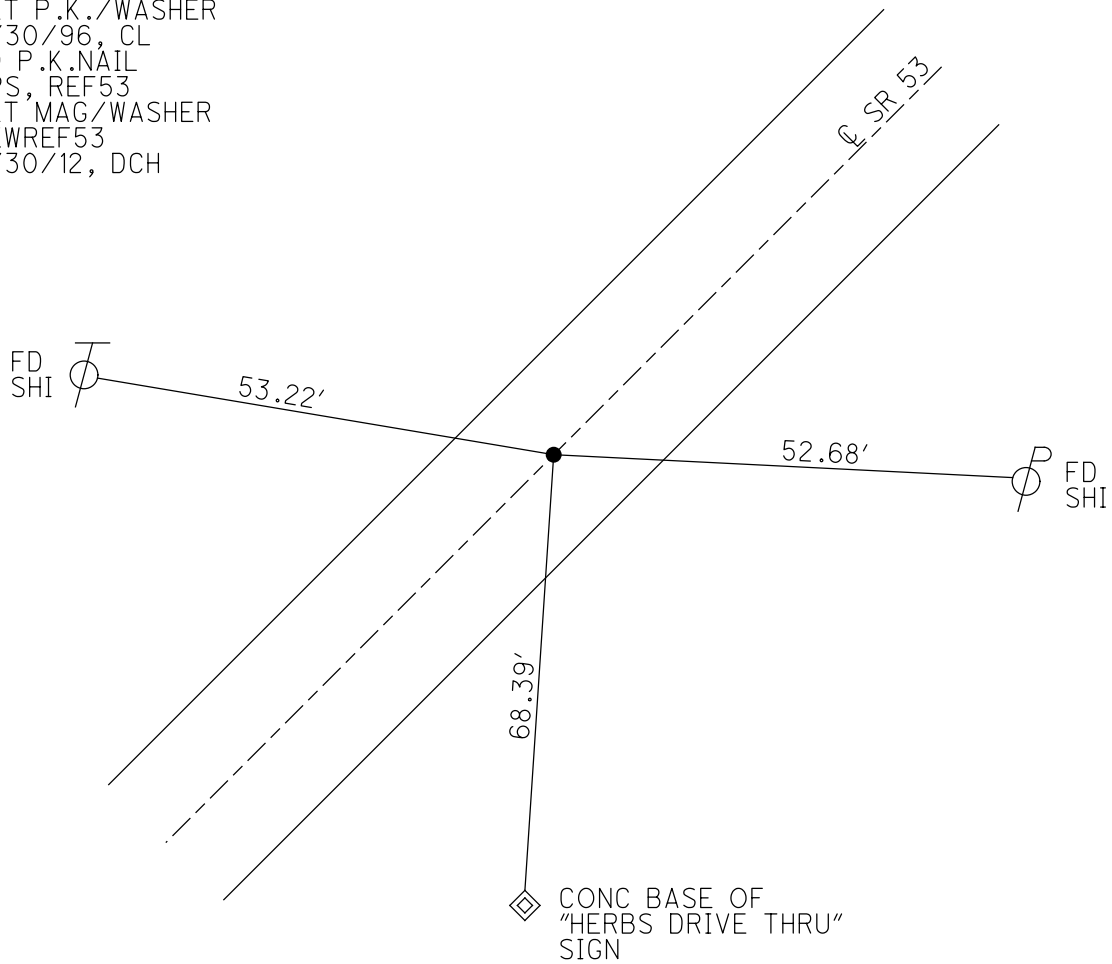
TYPE MONUMENT P.K.NAIL
 ON SURFACE - ~~BELOW~~ _____ ON _____
 LEFT - ☉ PAV'T - RIGHT ON _____
12.6' TO LT EDGE PAVEMENT
 S.L.M. 784+12.95

GRID: NORTHING: 685925.527 EASTING: 1874452.399

NOTE:
THIS MAP IS FOR ODOT PURPOSES ONLY
TO INDEX REFERENCE TIES, AND DOES NOT
REPRESENT TRUE LAND SUBDIVISION.



RECORD: S.T.
 STA. 711+17.47
 FD R.R.SPIKE SHAFT
 6/12/95
 SET P.K./WASHER
 5/30/96, CL
 FD P.K.NAIL
 GPS, REF53
 SET MAG/WASHER
 NEWREF53
 7/30/12, DCH



O.D.O.T. DISTRICT 2 SURVEY OFFICE

PERSONNEL

REFERENCE NO. 53

SHEET 11 OF 30

NOTES LOEHRKE

H.C. CANTERBURY

R.C. ROUSOS

DATE 6-12-95

WEATHER FAIR

TEMP. +62

ROUTE S.R. 53

COUNTY OTTAWA

TOWNSHIP CATAWBA

SECTION _____

T _____ R _____

Set P.K. / WASHER
5-30-96
C.L.

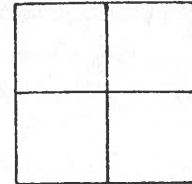
TYPE MONUMENT Shaft of P.P. SAKI

~~ON~~ SURFACE - BELOW 1 1/2"

LEFT - ☉ PAV'T. - RIGHT Yes

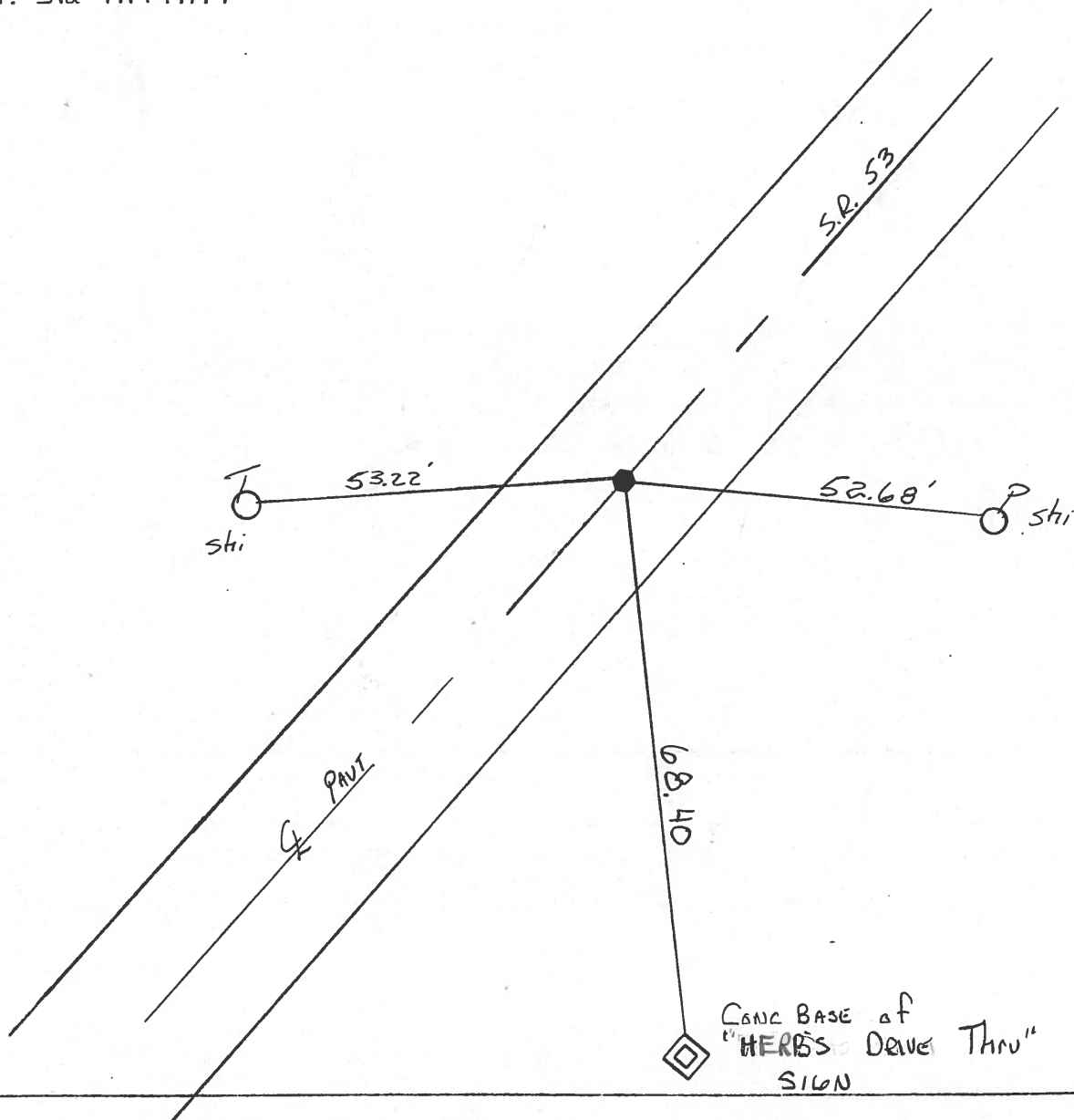
12.6 TO L EDGE PAVEMENT

S.L.M. 784+03



RECORD:

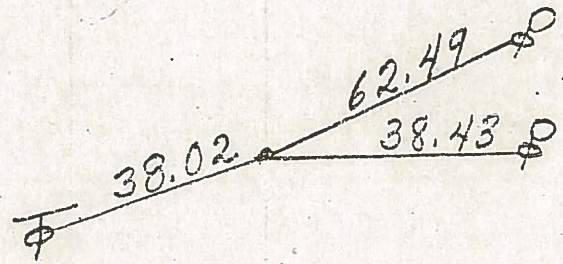
S.T. Sta 711+17.47



PERSONNEL	TITLE	PERSONNEL	TITLE	COUNTY	DATE	WEATHER	TEMP.	JOB NO.
Schneider				Ottawa	5-18-71	Windy	75°	
Masser				S. R. 53				
Baranoff				SEC.				
Geyman								
DESCRIPTION	S. R. # 163		North					
	LEFT	CENTER LINE	RIGHT					

3/12/84
20°
windy
overcast

P.T. 721+78.21
R.R. spk.



56

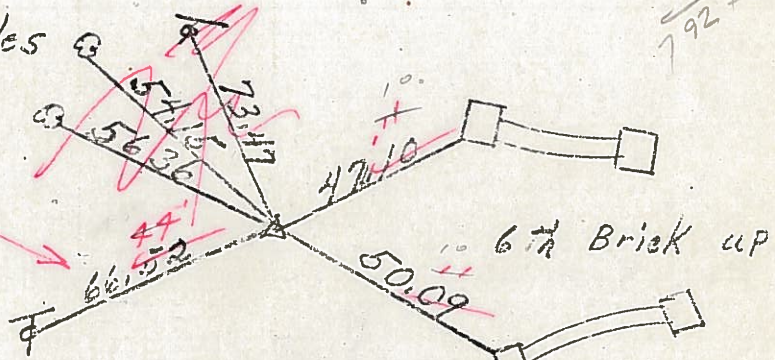
3/23/84

34°

14" Apples

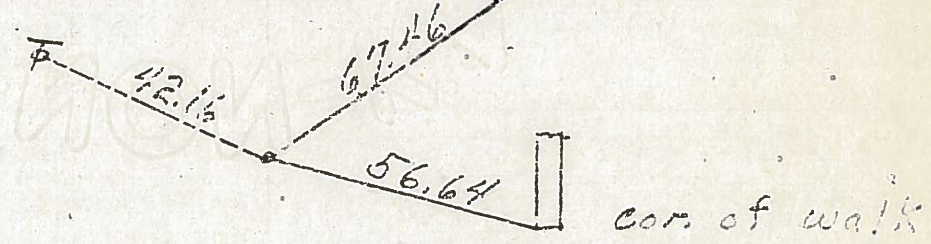
$$\begin{array}{r} 720 + 94.50 \\ 21 + 70 \\ \hline 792 + 64.50 \end{array}$$

P.I. R/W
720+94.50
R.R. SPK.



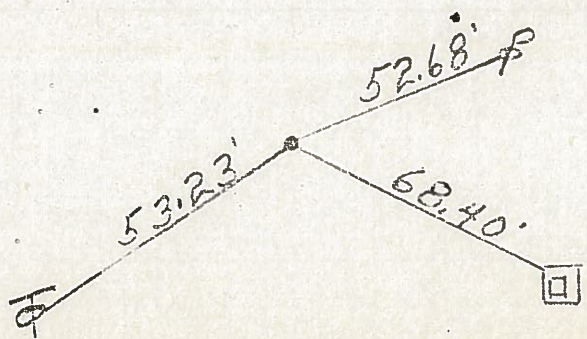
55

P.C. 720+10.79
R.R. spk.



54

S.T. 711+17.47
R.R. spk.
with head off

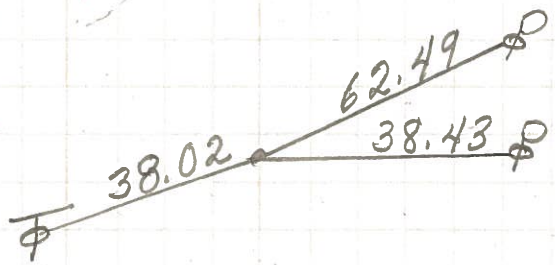


53

conc. base of
76 gas sign

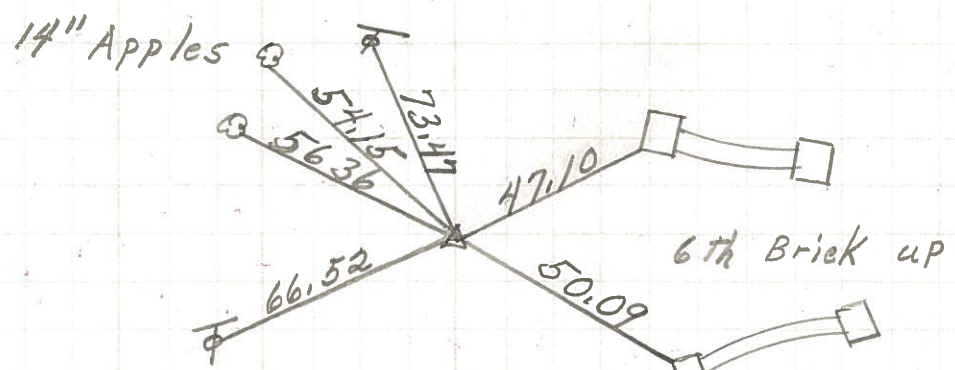
PERSONNEL	TITLE	PERSONNEL	TITLE	COUNTY	DATE	WEATHER	TEMP.
Schneider				Ottawa	5-18-71	Windy	75°
Mosser				S. R. 53			
Barbour				SEC.			
Geyman							
DESCRIPTION	S.R. # 163 North						JOB NO.
	LEFT	CENTER LINE	RIGHT				

P.T. 721+78.21
R.R. spk.



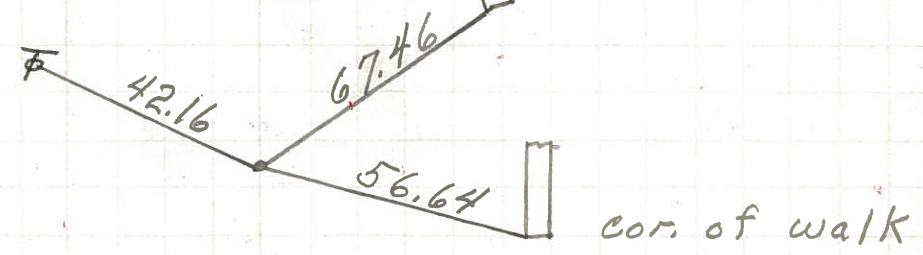
56

P.I.
720+94.50
R.R. spk.



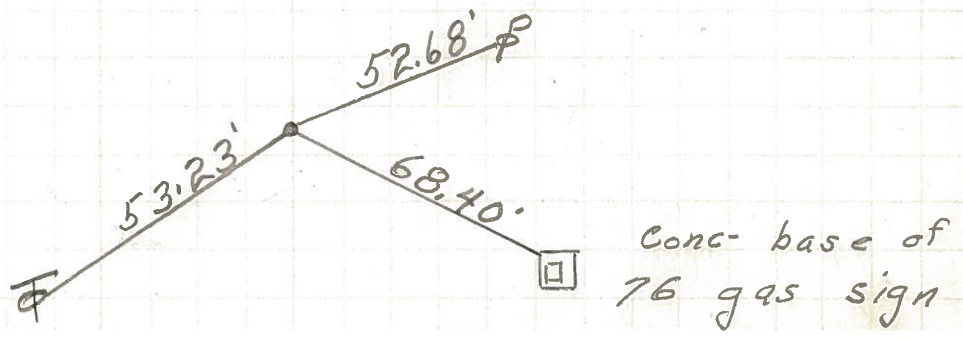
55

P.C. 720+10.79
R.R. spk.



54 9-B

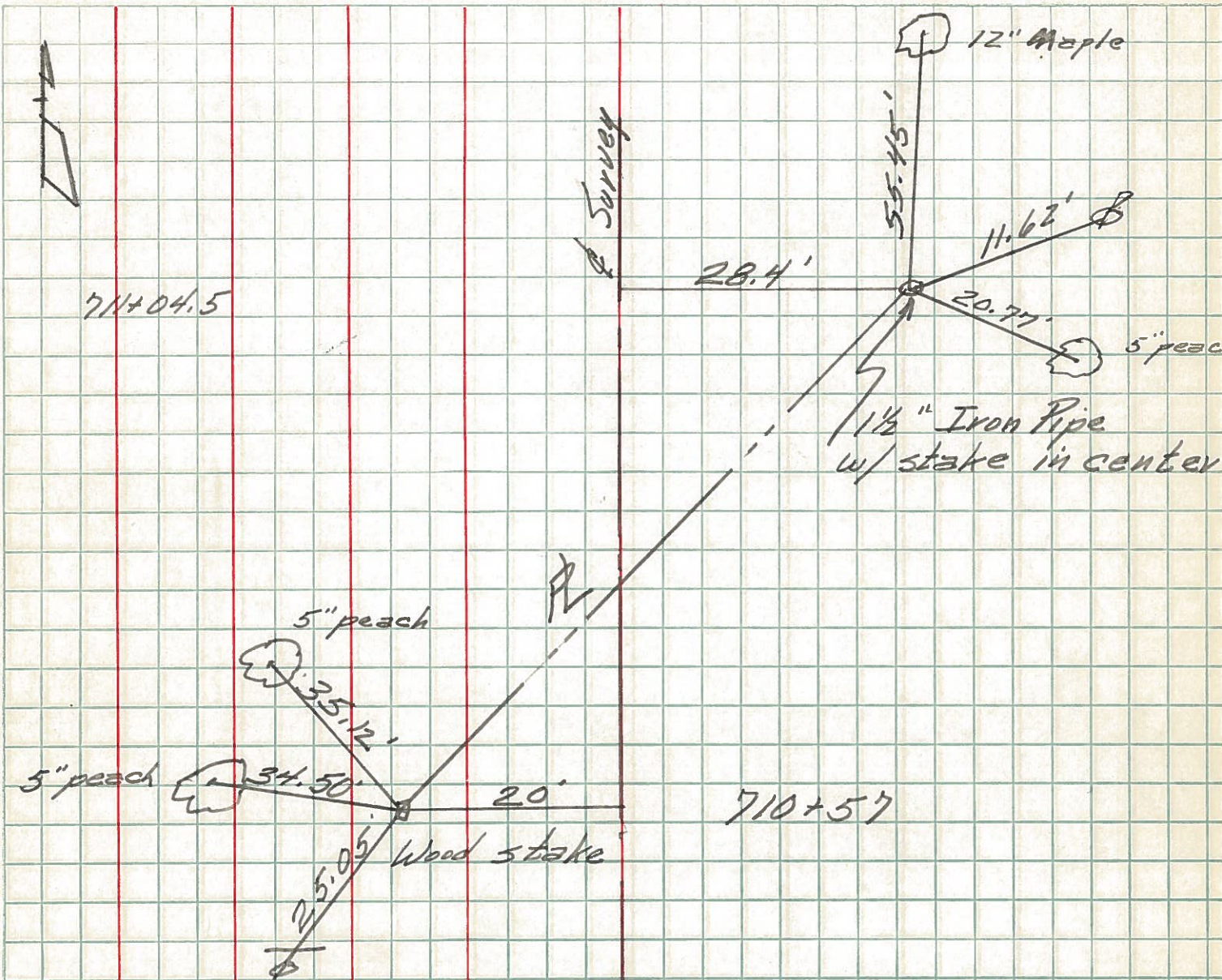
S.T. 711+17.47
R.R. spk.
with head off



53 12-A

PERSONNEL	TITLE	PERSONNEL	TITLE	COUNTY	DATE
Ash				Ott	
Leemaster				S. R. 53	WEATHER
Ripple				SEC. 11.55	TEMP.
Conin					

DESCRIPTION *ties* LEFT CENTER LINE RIGHT JOB NO.



All ties to shiner & nail