

O.D.O.T. DISTRICT 2 SURVEY OFFICE (USE ONLY)

PERSONNEL _____ REFERENCE NO. 54 SHEET 12 OF 34
 NOTES RHOADES DATE 8/24/22 ROUTE SR 53
 H.C. NIESE WEATHER SUNNY COUNTY OTTAWA
 R.C. AUBLE TEMP. 78° TOWNSHIP CATAWBA
 DWG BY RHOADES PID 102905 SECTION 4-28

CONNECTICUT WESTERN RESERVE

TYPE MONUMENT MAG/WASHER

ON SURFACE - ~~BELOW~~ ON

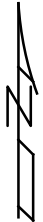
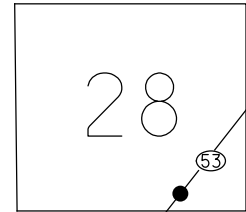
OFFSET Q PAVEMENT ON LT : RT
11.8' TO LT EDGE PAVEMENT

STATION: 793+25.88

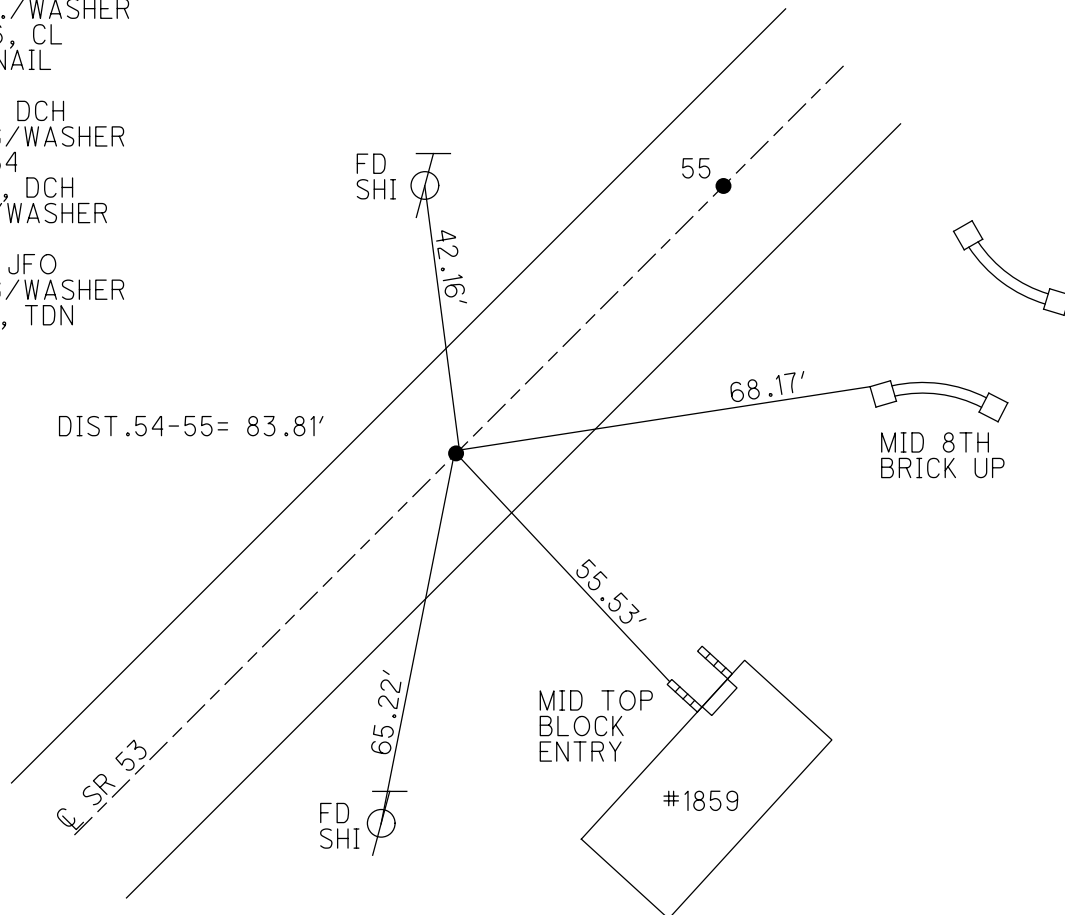
HORIZ.DATUM: NAD83 2011 GEOID: NAVD88 2018

GRID: NORTHING: 686584.142 EASTING: 1875115.660

NOTE:
THIS MAP IS FOR ODOT PURPOSES ONLY
TO INDEX REFERENCE TIES, AND DOES NOT
REPRESENT TRUE LAND SUBDIVISION.



RECORD: P.C.
 STA. 720+10.79
 FD R.R.SPIKE
 6/12/95
 SET P.K./WASHER
 5/23/96, CL
 FD P.K.NAIL
 REF54
 8/26/11, DCH
 SET MAG/WASHER
 NEWREF54
 7/30/12, DCH
 FD MAG/WASHER
 REF54
 3/4/21, JFO
 SET MAG/WASHER
 5/15/23, TDN

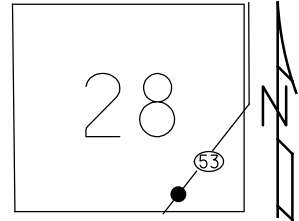


O.D.O.T. DISTRICT 2 SURVEY OFFICE (USE ONLY)

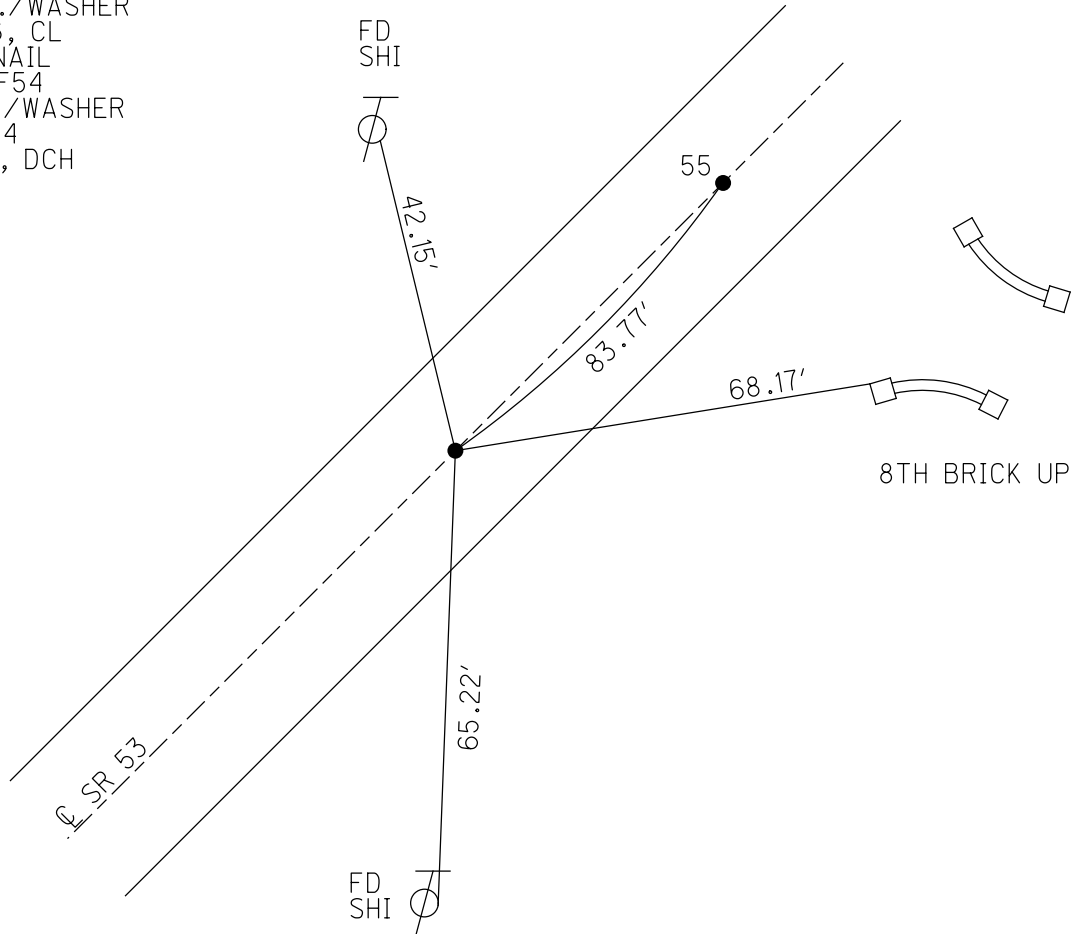
PERSONNEL	REFERENCE NO.	54	SHEET	15	OF	36
NOTES	HOMAN	DATE	8/26/11	ROUTE	SR 53	
H.C.	ROUSOS	WEATHER	SUNNY	COUNTY	OTTAWA	
R.C.	HARBAUGH	TEMP.	70°	TOWNSHIP	CATAWBA ISL	
				SECTION	4-28	

TYPE MONUMENT P.K.NAIL
 ON SURFACE - ~~BELOW~~ ON
 LEFT - C PAV'T - RIGHT ON
11.8' TOLT EDGE PAVEMENT
 S.L.M. 793+47.41
 GRID: NORTHING: 686584.118 EASTING: 1875115.508

NOTE:
THIS MAP IS FOR ODOT PURPOSES ONLY
TO INDEX REFERENCE TIES, AND DOES NOT
REPRESENT TRUE LAND SUBDIVISION.



RECORD: P.T.
 STA. 720+10.79
 FD R.R.SPIKE
 6/12/95
 SET P.K./WASHER
 5/23/96, CL
 FD P.K.NAIL
 GPS, REF54
 SET MAG/WASHER
 NEWREF54
 7/30/12, DCH



O.D.O.T. DISTRICT 2 SURVEY OFFICE

PERSONNEL

REFERENCE NO. 55

SHEET 12 OF 30

NOTES LOEHRKE

H.C. CANTERBURY

DATE 6-12-95

ROUTE S.R. 53

R.C. ROUSOS

WEATHER FAIR

COUNTY OTTAWA

TEMP. 76.8

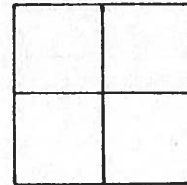
TOWNSHIP CATAWBA

SECTION _____

T _____ R _____

Set PK./WASHER
C.I.

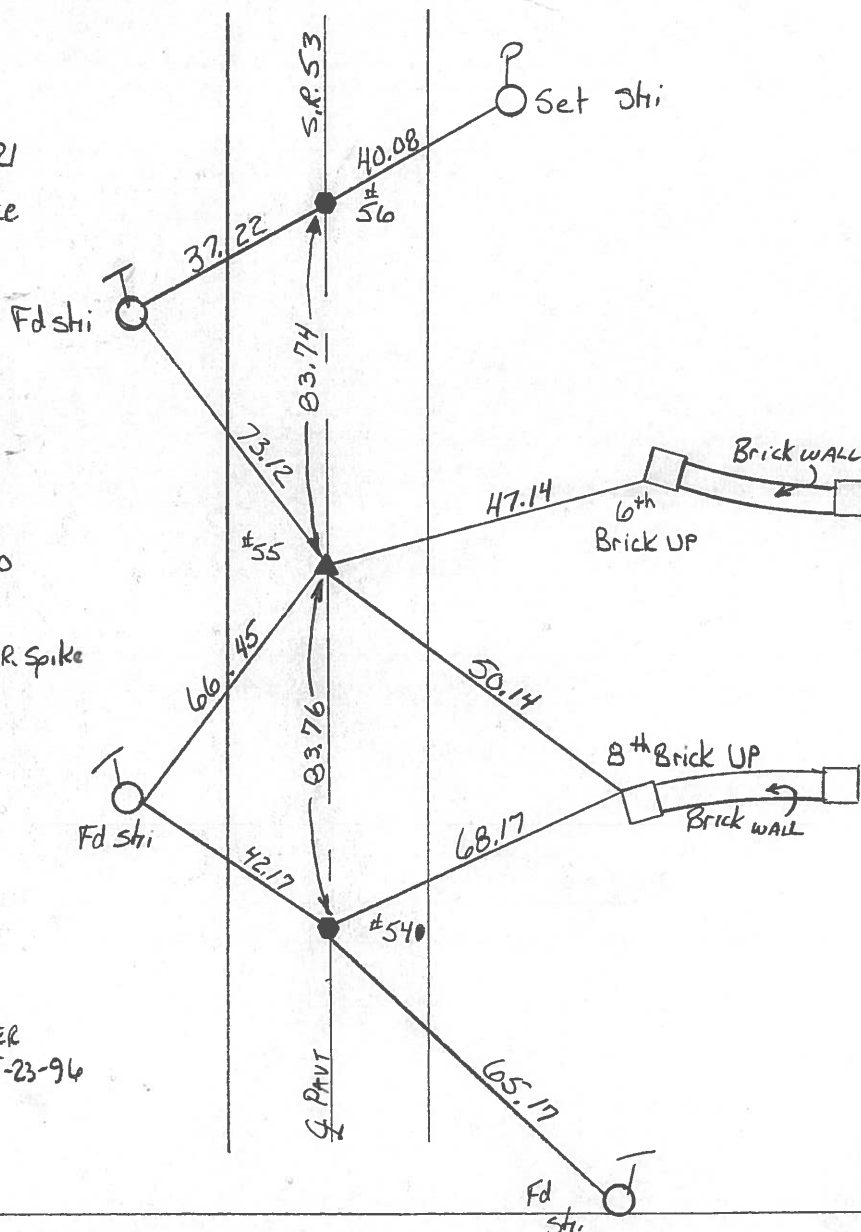
TYPE MONUMENT R.R. SPIKE
~~ON SURFACE~~ - BELOW 2" Deep
~~LEFT- & PAVT.~~ - RIGHT ON &
11.8' TO Lt EDGE PAVEMENT
 S.L.M. P.I. #55 Sta 794+28



#56
 P.T. RECORD Sta 721.78.21
 Fd sm P.K. on Surface
 ON & PAVT
 Reset P.K./WASHER
 5-23-96

#55
 RECORD P.I. Sta 720+94.50
 Fd R.R. SPIKE 2" Deep
 ON & Set sm R.R. Spike
 5-23-96

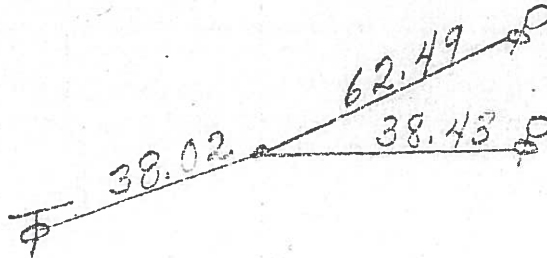
#54
 PC RECORD 720+10.79
 Fd P.K. NAIL
 ON &
 Set P.K./WASHER
 5-23-96



PERSONNEL	TITLE	PERSONNEL	TITLE	COUNTY	DATE
Schneider				Ottawa	5-18-77
Mosser				S. R. 53	WEATHER Windy
Baranup				SEC	TEMP. 75°
Geysler					
DESCRIPTION	S.R. # 163 North				JOB NO.
	LEFT	CENTER LINE	RIGHT		

3/12/84
20°
windy
overcast

P.T. 721+78.21
R.R. spk.



56

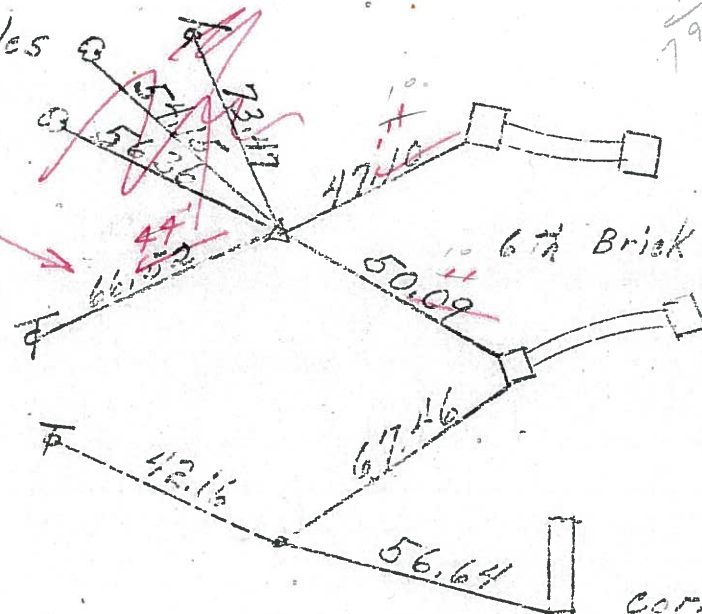
3/23/84

34°

14" Apples

$$\begin{array}{r} 720 + 94.50 \\ - 74 + 70 \\ \hline 792 + 64.50 \end{array}$$

P.I. R/W
720+94.50
R.R. spk.



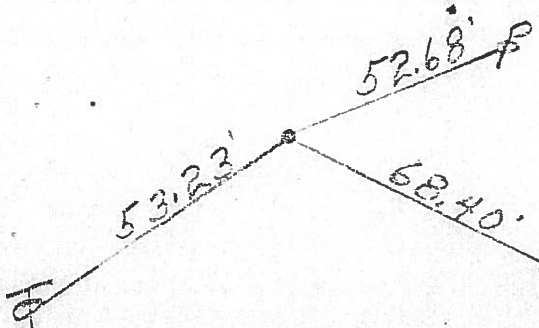
55

P.C. 720+10.79
R.R. spk.

54

com. of walk

S.T. 711+17.47
R.R. spk.
with head off

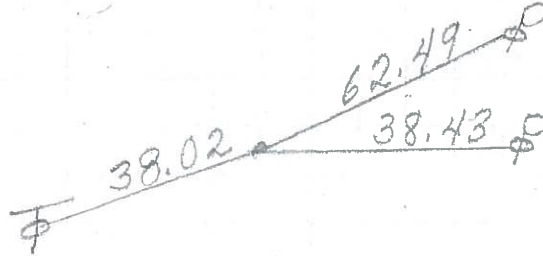


53

conc. base of
76 gas sign

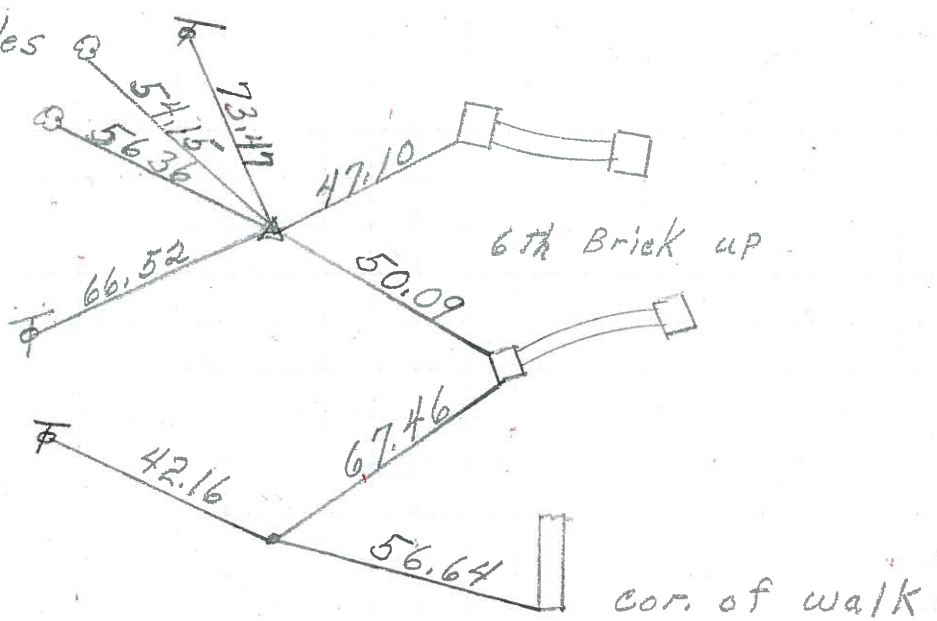
PERSONNEL	TITLE	PERSONNEL	TITLE	COUNTY	DATE
Schneider				Ottawa	5-18-71
Mosser				S. R. 53	WEATHER Windy
Barbour				SEC.	TEMP. 75°
Geyman					
DESCRIPTION	S.R. # 163	North			JOB NO.
	LEFT	CENTER LINE	RIGHT		

P.T. 721+78.21
R.R. Spk.



56

P.I.
720+94.50
R.R. Spk.

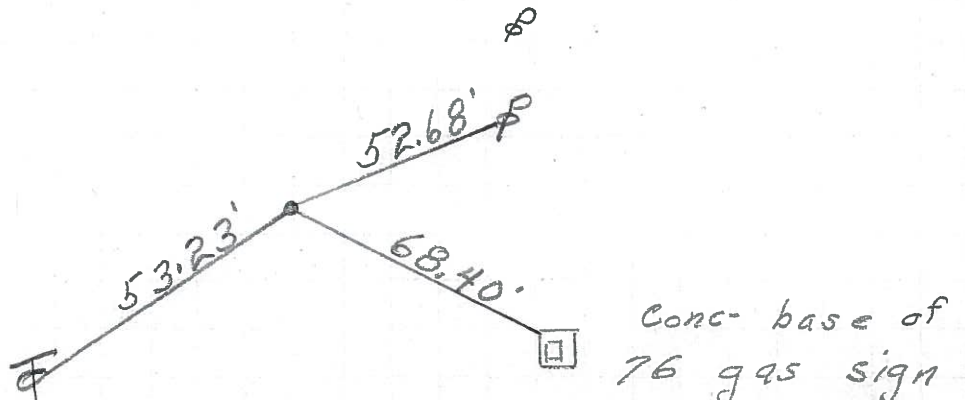


55

P.C. 720+10.79
R.R. Spk.

54

S.T. 711+17.47
R.R. Spk.
with head off



53