

O.D.O.T. DISTRICT 2 SURVEY OFFICE (USE ONLY)

PERSONNEL

REFERENCE NO. 55

SHEET 13 OF 34

NOTES RHOADES

DATE 8/24/22

ROUTE SR 53

H.C. NIESE

WEATHER SUNNY

COUNTY OTTAWA

R.C. AUBLE

TEMP. 78°

TOWNSHIP CATAWBA

SECTION 4-28

DWG BY RHOADES PID 102905

CONNECTICUT WESTERN RESERVE

TYPE MONUMENT MAG/WASHER

NOTE:
THIS MAP IS FOR ODOT PURPOSES ONLY
TO INDEX REFERENCE TIES, AND DOES NOT
REPRESENT TRUE LAND SUBDIVISION.

ON SURFACE - ~~BELOW~~ ON

OFFSET CL PAVEMENT 1.3' LT : ~~RT~~

11.8' TO LT EDGE PAVEMENT

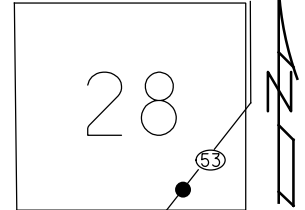
STATION: 794+09.68

HORIZ.DATUM: NAD83 2011

GEOID: NAVD88 2018

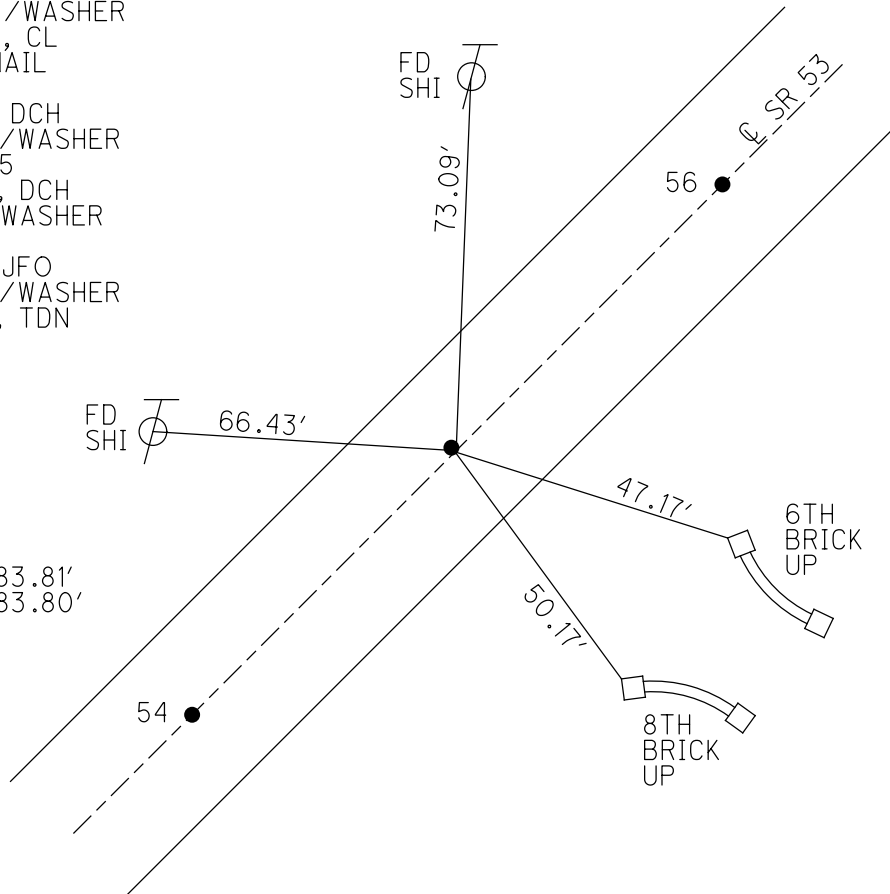
GRID: NORTHING: 686643.191

EASTING: 1875175.124



RECORD: P.I.
STA. 720+94.5
FD R.R.SPIKE
6/12/95
SET P.K./WASHER
5/23/96, CL
FD P.K.NAIL
REF55
8/26/11, DCH
SET MAG/WASHER
NEWREF55
7/30/12, DCH
FD MAG/WASHER
REF55
3/4/21, JFO
SET MAG/WASHER
5/16/23, TDN

DIST.
54-55= 83.81'
55-56= 83.80'

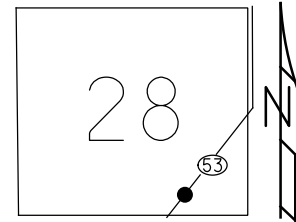


O.D.O.T. DISTRICT 2 SURVEY OFFICE (USE ONLY)

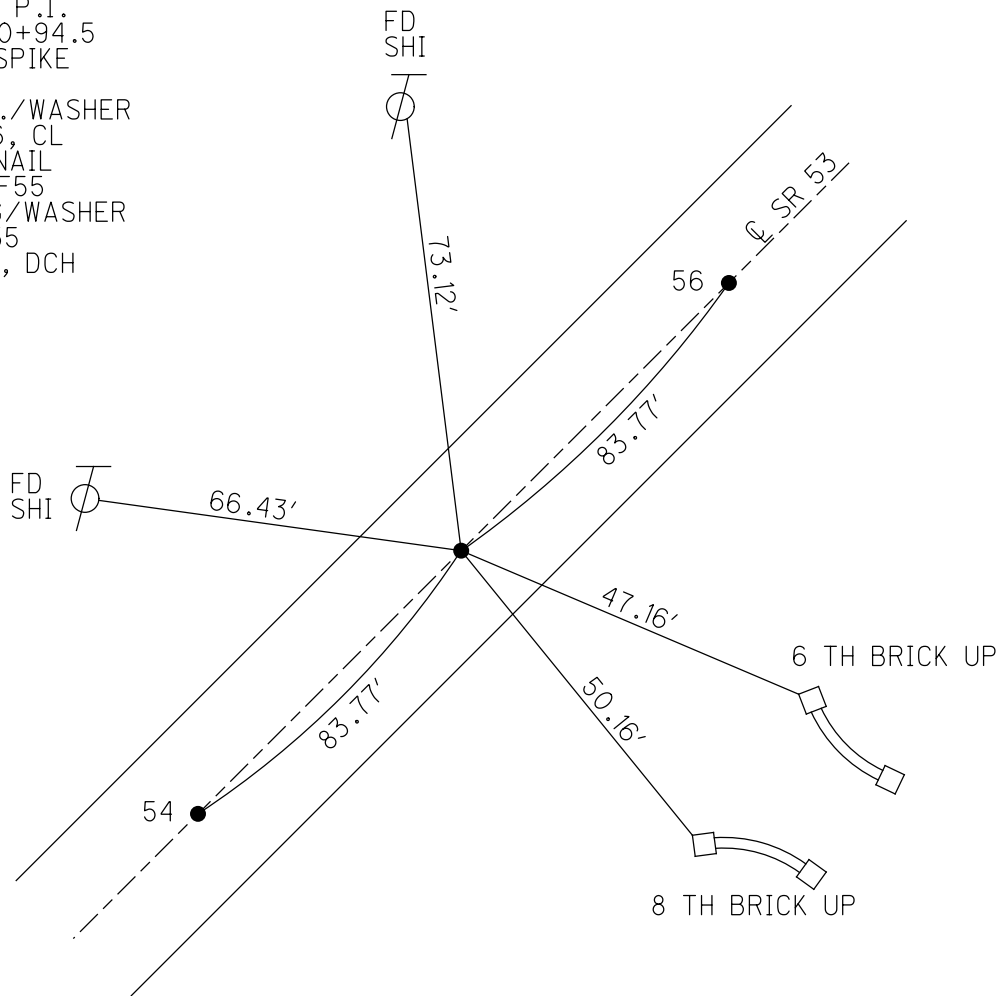
PERSONNEL _____ REFERENCE NO. 55 SHEET 16 OF 36
 NOTES HOMAN DATE 8/26/11 ROUTE SR 53
 H.C. ROUSOS WEATHER SUNNY COUNTY OTTAWA
 R.C. HARBAUGH TEMP. 70° TOWNSHIP CATAWBA ISL
 _____ SECTION 4-28

TYPE MONUMENT R.R.SPIKE
 ON SURFACE - ~~BELOW~~ _____ ON _____
 LEFT - CL PAV'T - RIGHT ON _____
11.8' TO LT EDGE PAVEMENT
 S.L.M. 794+31.16
 GRID: NORTHING: 686643.122 EASTING: 1875174.980

NOTE:
THIS MAP IS FOR ODOT PURPOSES ONLY
TO INDEX REFERENCE TIES, AND DOES NOT
REPRESENT TRUE LAND SUBDIVISION.



RECORD: P.I.
 STA. 720+94.5
 FD R.R.SPIKE
 6/12/95
 SET P.K./WASHER
 5/23/96, CL
 FD P.K.NAIL
 GPS, REF55
 SET MAG/WASHER
 NEWREF55
 7/30/12, DCH



O.D.O.T. DISTRICT 2 SURVEY OFFICE

PERSONNEL

REFERENCE NO. 55

SHEET 12 OF 30

NOTES LOEHRKE

H.C. CANTERBURY

R.C. ROUSOS

DATE 6-12-95

WEATHER FAIR

TEMP. +68

ROUTE S.R. 53

COUNTY OTTAWA

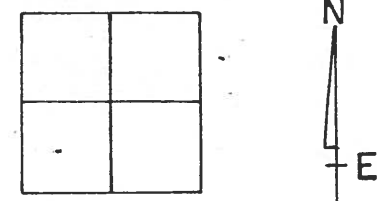
TOWNSHIP CATAWBA

SECTION _____

T _____ R _____

Set PK/WASHER
C.L.

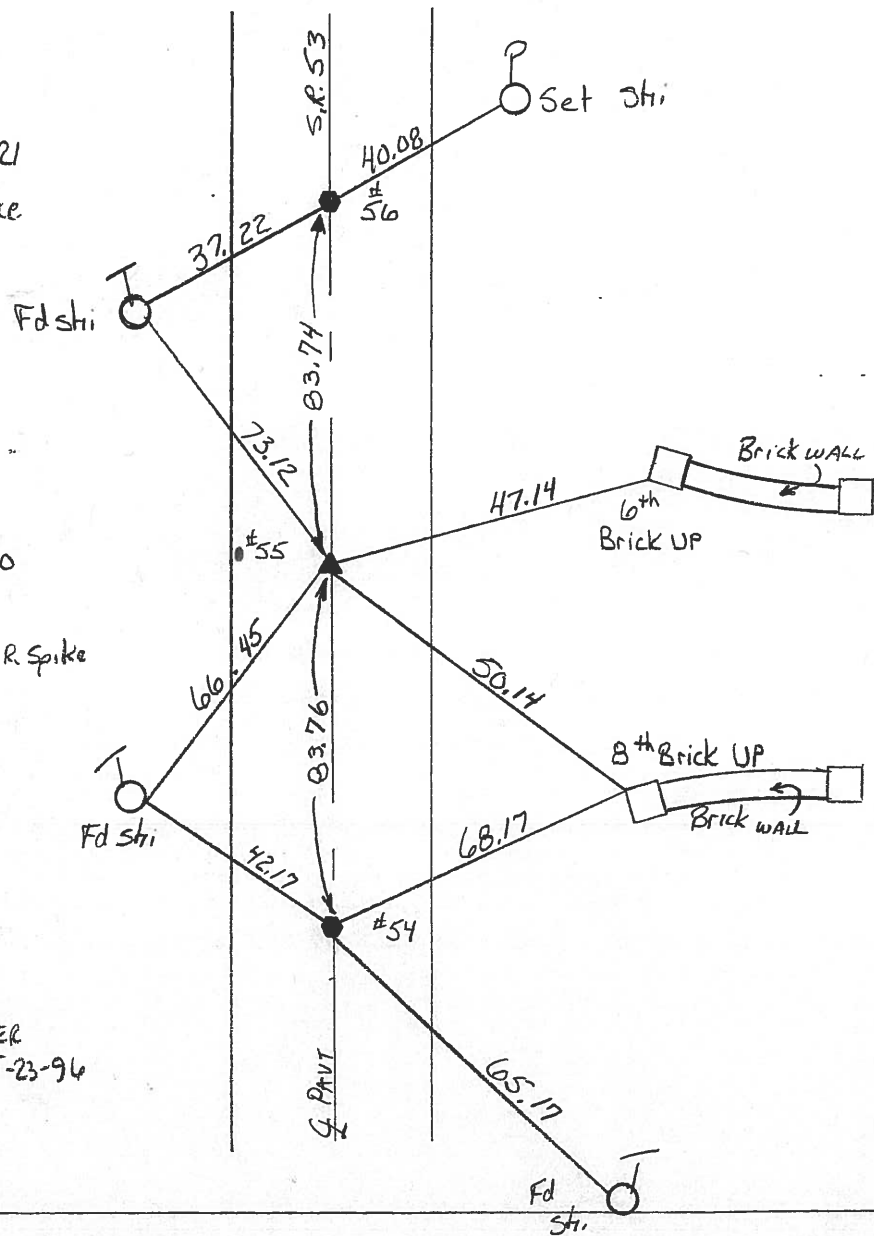
TYPE MONUMENT R.R. SPIKE
~~ON SURFACE~~ - BELOW 2" Deep
 LEFT- & PAV'T. - RIGHT DN &
11.8' TO Lt EDGE PAVEMENT
 S.L.M. P.I. #55 Sta 794+28



#56
 P.T. RECORD Sta 721.78.21
 Fd sm P.K. on Surface
 DN & PAUT
 Reset P.K./WASHER
 5-23-96

#55
 RECORD P.I. Sta 720+94.50
 Fd R.R. SPIKE 2" DEEP
 DN & Set sm R.R. Spike
 5-23-96

#54
 PC RECORD 726+10.79
 Fd P.K. MAIL
 DN &
 Set P.K./WASHER
 5-23-96



County Ottawa S.R. #53

Date 8/28/84

Township Catawba

Weather sunny

Section _____

Temp. 80°

T N, R E

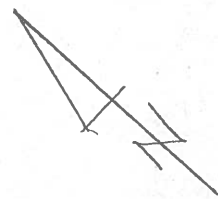
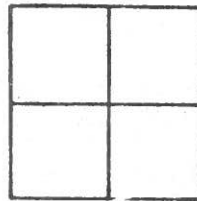
Personnel Cronin

Lipple

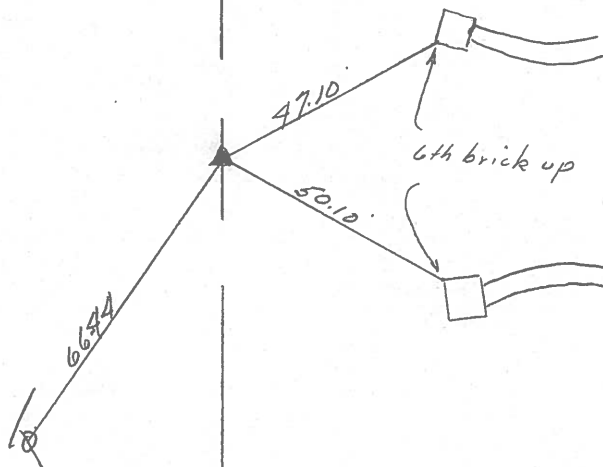
Geyman

Barbour

PT 55



P.I. R/W
720 + 94.50
set P.K. & washer atop
P.R. spike

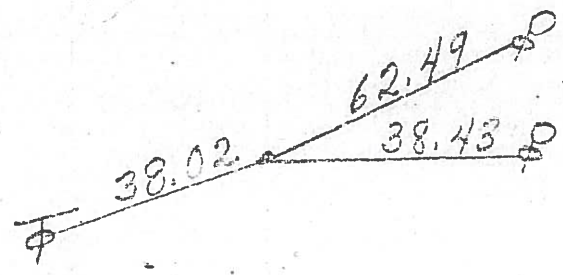


E. R/W S.R. #53

| PERSONNEL | TITLE | PERSONNEL | TITLE | COUNTY | DATE | WEATHER | TEMP. |
|-------------|------------------|-------------|-------|----------|---------|---------|---------|
| Schneider | | | | Ottawa | 5-19-71 | Windy | 75° |
| Mosser | | | | S. R. 53 | | | |
| Barnum | | | | | | | |
| Gylden | | | | SEC. | | | |
| DESCRIPTION | S.R. # 163 North | | | | | | JOB NO. |
| | LEFT | CENTER LINE | RIGHT | | | | |

3/12/84
20°
windy
overcast

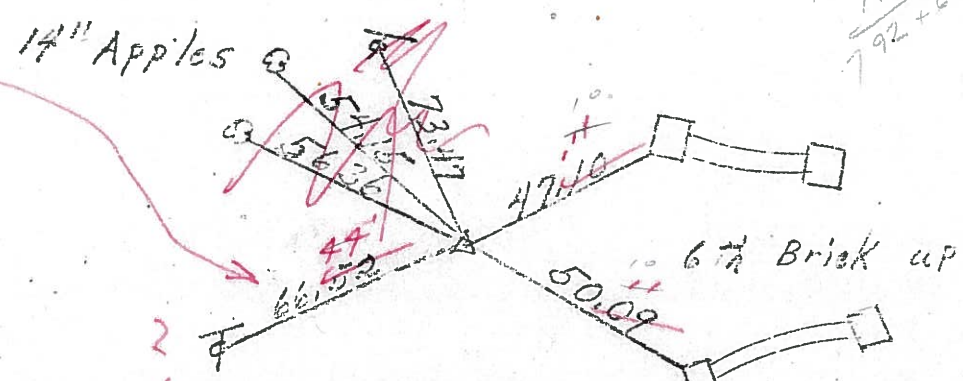
P.T. 721+78.21
R.R. Spk.



56

3/23/84 34°

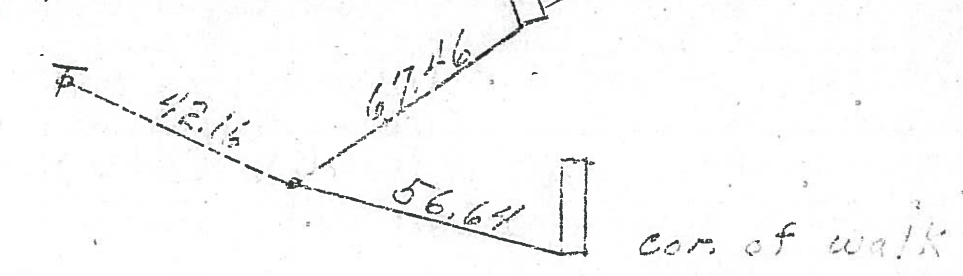
P.I. R/W
720+94.50
R.R. Spk.



720+94.50
71+70
792+64.50

55

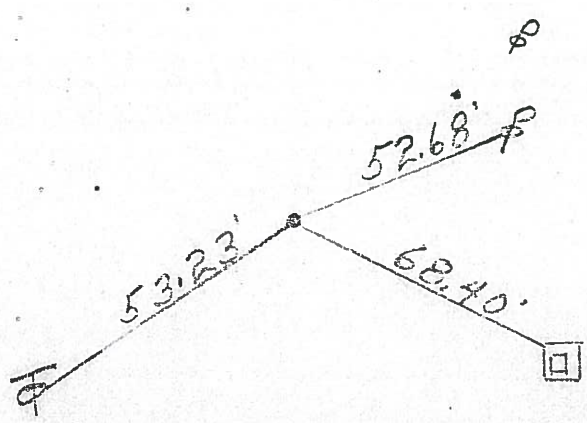
P.C. 720+10.79
R.R. Spk.



com. of walk

54

S.T. 711+17.47
R.R. Spk.
with head off

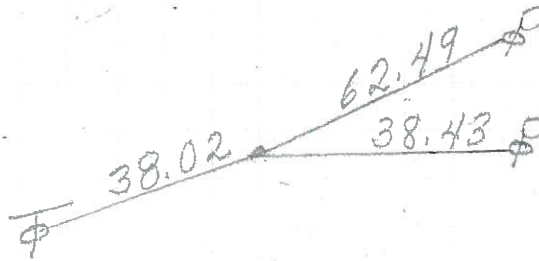


conc. base of
76 gas sign

53

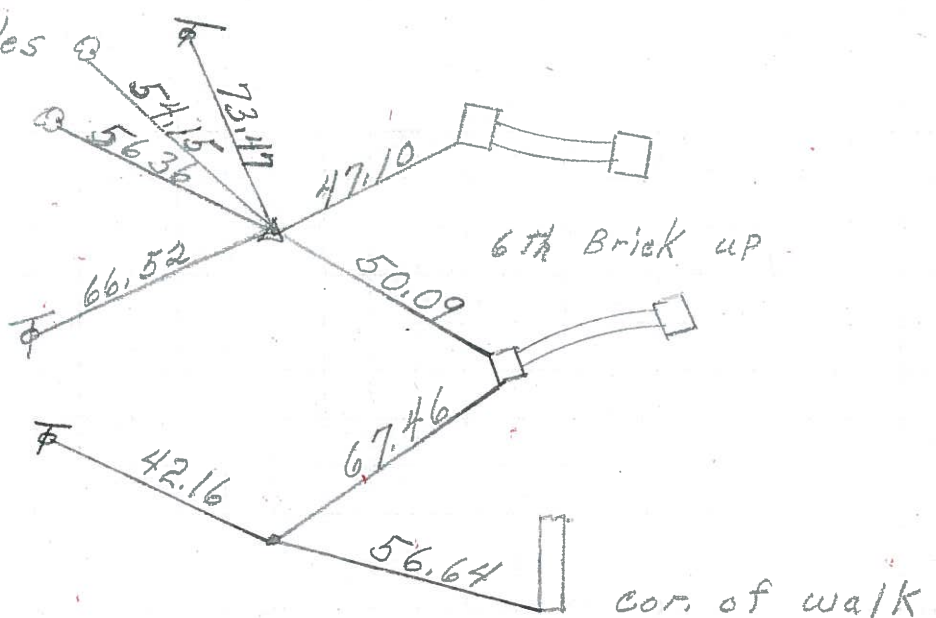
| PERSONNEL | TITLE | PERSONNEL | TITLE | COUNTY | DATE | WEATHER | TEMP. |
|-------------|-------------|-------------|-------|----------|---------|---------|---------|
| Schneider | | | | Ottawa | 5-18-71 | Windy | 75° |
| Mosser | | | | S. R. 53 | | | |
| Barbour | | | | SEC. | | | |
| Geyman | | | | | | | |
| DESCRIPTION | S. R. # 163 | North | | | | | JOB NO. |
| | LEFT | CENTER LINE | RIGHT | | | | |

P.T. 721+78.21
R.R. spk.



56

P.I.
720+94.50
R.R. spk.

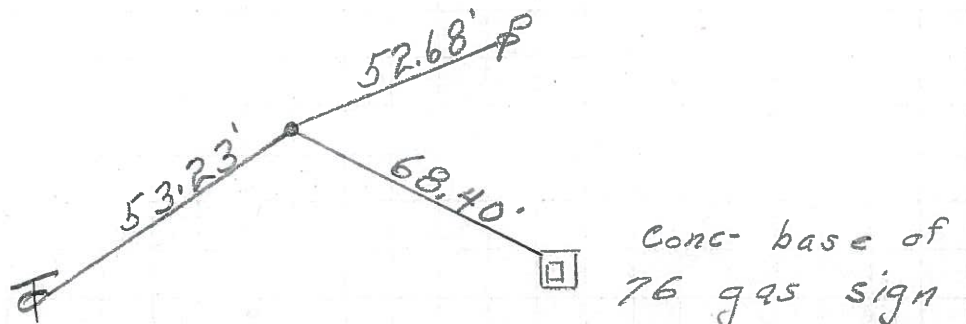


55

P.C. 720+10.79
R.R. spk.

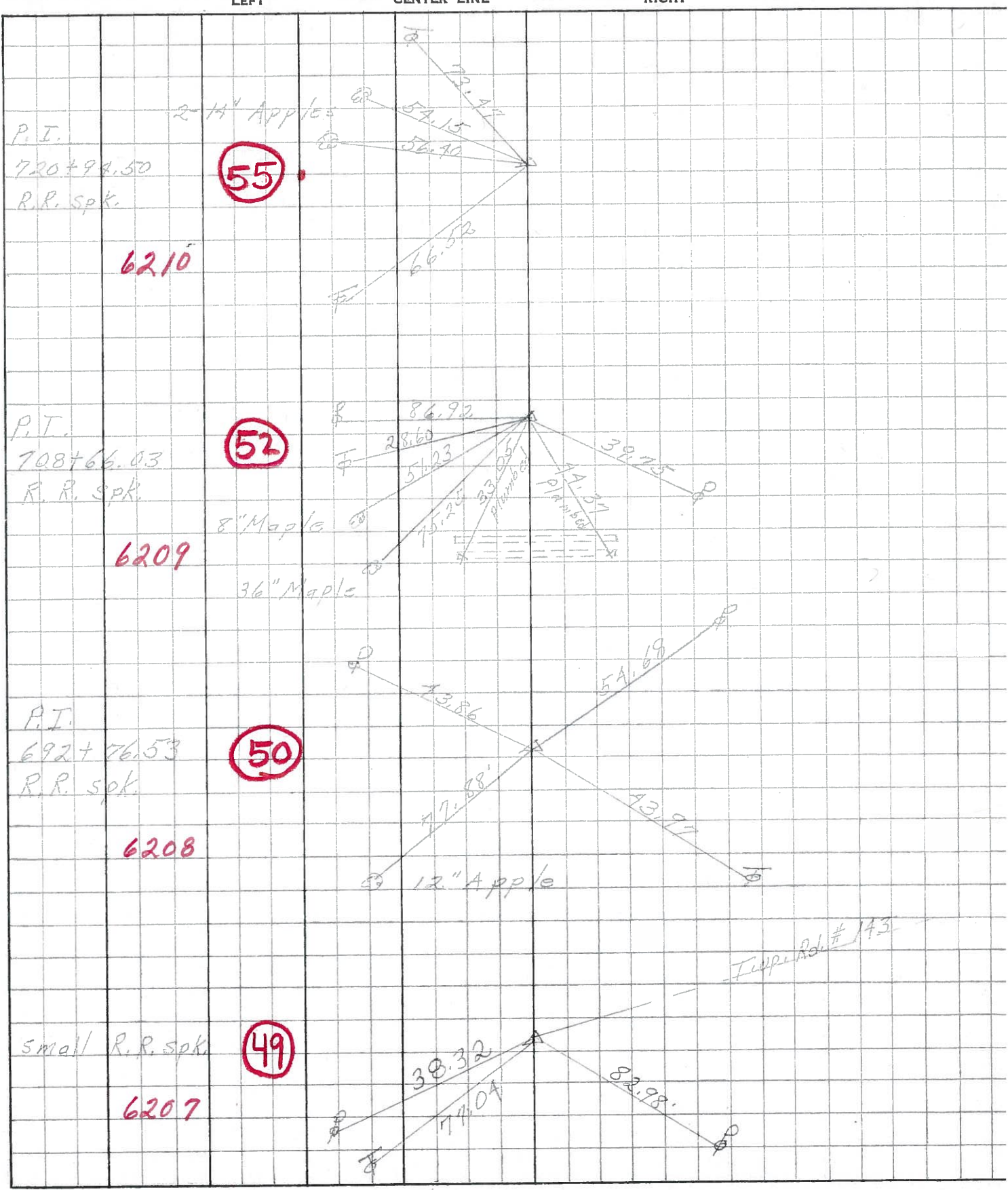
54

S.T. 711+17.47
R.R. spk.
with head off



53

| | | | | | |
|------------------|--------------------------------|--------------|-------|-----------------------------|---------------------|
| PERSONNEL | TITLE | PERSONNEL | TITLE | COUNTY | DATE |
| <u>Schneider</u> | | <u>Potts</u> | | <u>Ottawa</u> | <u>8-2-68</u> |
| <u>Masser</u> | | | | S. R. <u>53</u> | WEATHER <u>Fair</u> |
| <u>Barbour</u> | | | | SEC. <u>S.R. #163 North</u> | TEMP. <u>75°</u> |
| <u>Redding</u> | | | | | |
| DESCRIPTION | <u>Ties for Control Points</u> | | | | JOB NO. |



P.I.
720+94.50
R.R. Spk.

6210

55

P.I.
708+66.03
R.R. Spk.

6209

52

P.I.
692+76.53
R.R. Spk.

6208

50

small R.R. Spk.

6207

49

Temp. Rd. # 143