

O.D.O.T. DISTRICT 2 SURVEY OFFICE (USE ONLY)

PERSONNEL	REFERENCE NO. <u>48</u>	SHEET <u>14</u> OF <u>34</u>
NOTES <u>RHOADES</u>	DATE <u>8/24/22</u>	ROUTE <u>SR 53</u>
H.C. <u>NIESE</u>	WEATHER <u>SUNNY</u>	COUNTY <u>OTTAWA</u>
R.C. <u>AUBLE</u>	TEMP. <u>78°</u>	TOWNSHIP <u>CATAWBA</u>
		SECTION <u>4-28</u>

DWG BY RHOADES PID 102905

TYPE MONUMENT MAG/WASHER

ON SURFACE - ~~BELOW~~ ON

OFFSET 0.6' LT : ~~RT~~

11.8' TO LT EDGE PAVEMENT

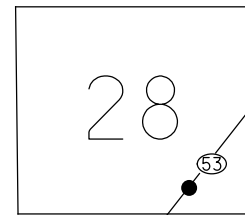
STATION: 794+93.45

HORIZ.DATUM: NAD83 2011 GEOID: NAVD88 2018

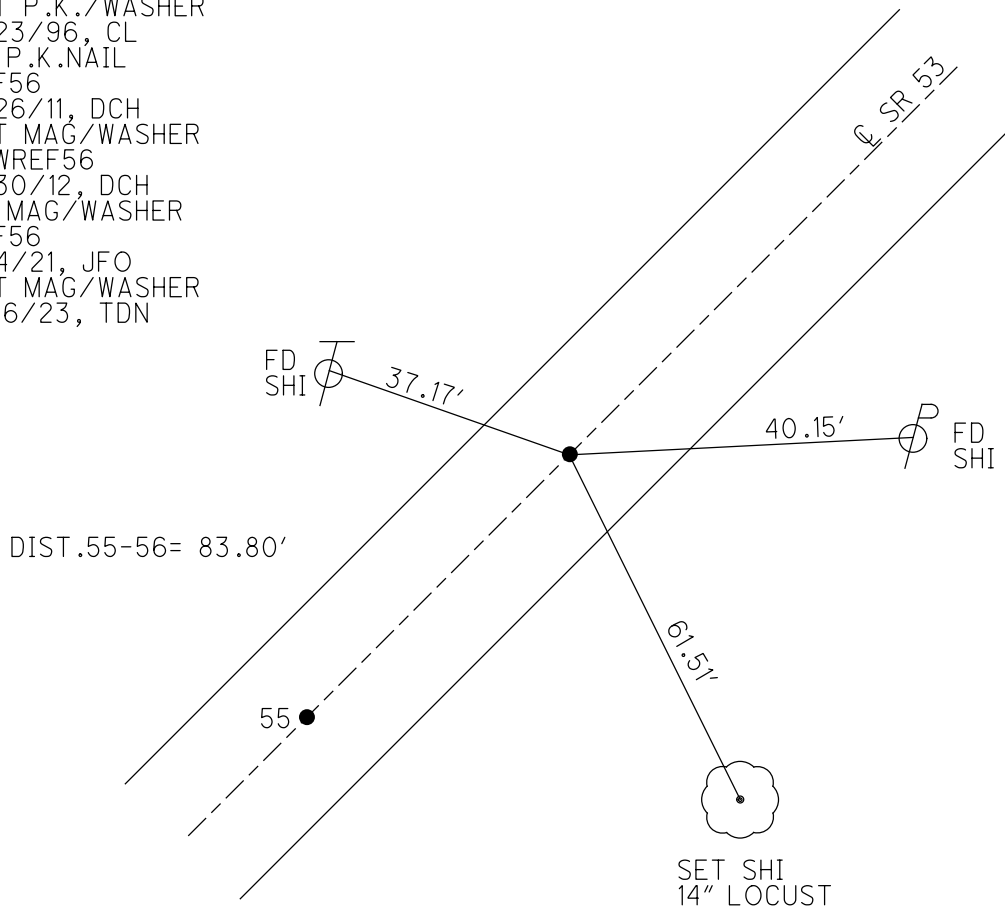
GRID: NORTHING: 686701.641 EASTING: 1875235.132

CONNECTICUT WESTERN RESERVE

NOTE:
THIS MAP IS FOR ODOT PURPOSES ONLY.
TO INDEX REFERENCE TIES, AND DOES NOT
REPRESENT TRUE LAND SUBDIVISION.



RECORD: P.T.
STA. 721+78.21
FD SM.P.K.NAIL
6/12/95
SET P.K./WASHER
5/23/96, CL
FD P.K.NAIL
REF56
8/26/11, DCH
SET MAG/WASHER
NEWREF56
7/30/12, DCH
FD MAG/WASHER
REF56
3/4/21, JFO
SET MAG/WASHER
5/16/23, TDN

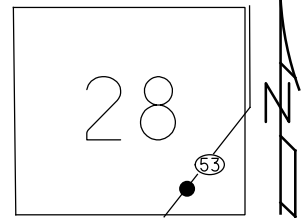


O.D.O.T. DISTRICT 2 SURVEY OFFICE (USE ONLY)

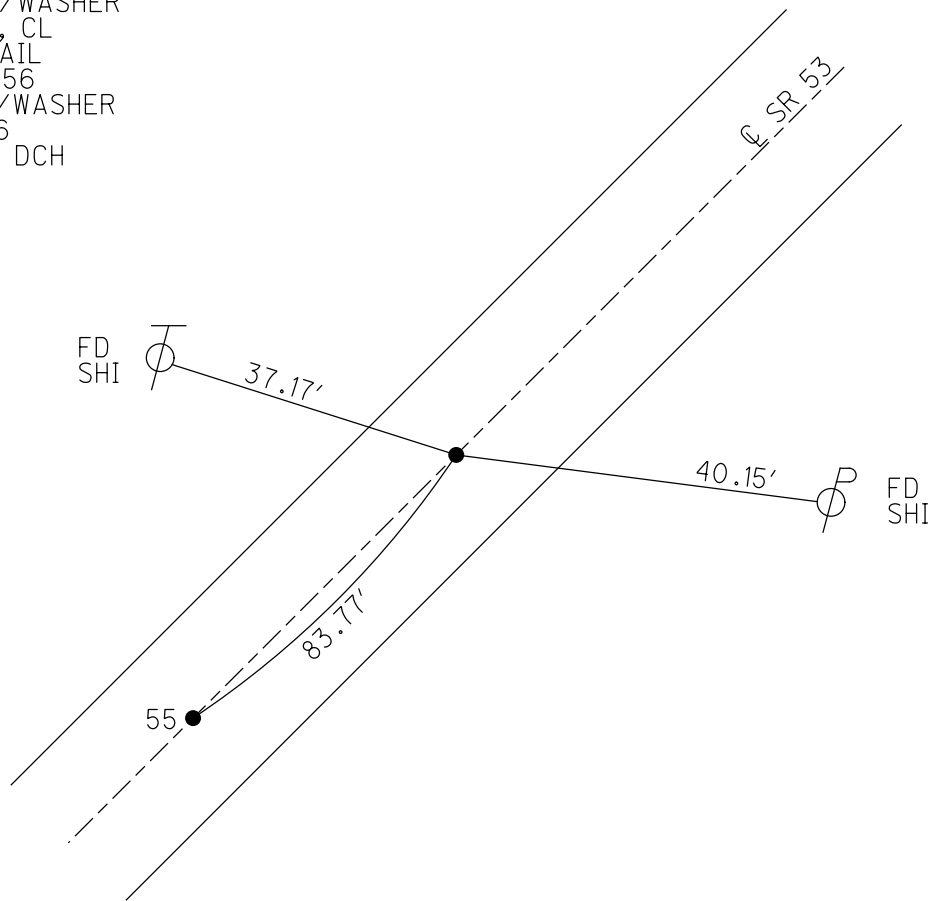
PERSONNEL _____ REFERENCE NO. 56 SHEET 17 OF 36
 NOTES HOMAN DATE 8/26/11 ROUTE SR 53
 H.C. ROUSOS WEATHER SUNNY COUNTY OTTAWA
 R.C. HARBAUGH TEMP. 70° TOWNSHIP CATAWBA ISL
 _____ SECTION 4-28

TYPE MONUMENT P.K.NAIL
 ON SURFACE - ~~BELOW~~ _____ ON _____
 LEFT - CL PAV'T - RIGHT ON _____
11.8' TO LT EDGE PAVEMENT
 S.L.M. 795+14.91
 GRID: NORTHING: 686701.553 EASTING: 1875235.003

NOTE:
THIS MAP IS FOR ODOT PURPOSES ONLY.
TO INDEX REFERENCE TIES, AND DOES NOT
REPRESENT TRUE LAND SUBDIVISION.



RECORD: P.T.
 STA. 721+78.21
 FD SM.P.K.NAIL
 6/12/95
 SET P.K./WASHER
 5/23/96, CL
 FD P.K.NAIL
 GPS, REF56
 SET MAG/WASHER
 NEWREF56
 7/30/12, DCH



O.D.O.T. DISTRICT 2 SURVEY OFFICE

PERSONNEL

REFERENCE NO. 55

SHEET 12 OF 30

NOTES LOEHRKE

H.C. CANTERBURY

R.C. ROUSOS

DATE 6-12-95

WEATHER FAIR

TEMP. 16.8

ROUTE S.R. 53

COUNTY OTTAWA

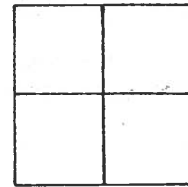
TOWNSHIP CATAWBA

SECTION _____

T _____ R _____

Set P.K./WASHER
C.L.

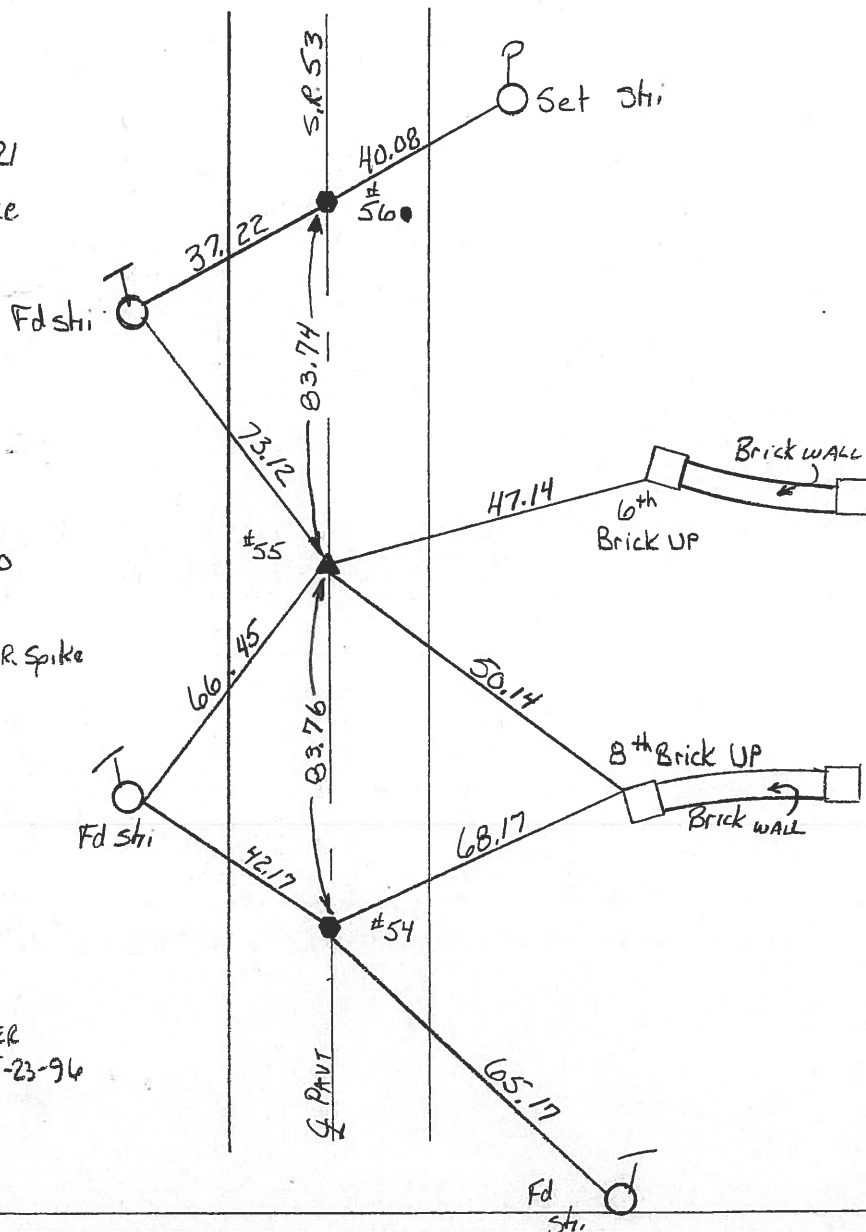
TYPE MONUMENT R.R. SPIKE
~~ON SURFACE - BELOW~~ 2" Deep
~~LEFT- & PAVT. - RIGHT~~ ON &
11.8' TO Lt EDGE PAVEMENT
 S.L.M. P.I. #55 Sta 794+28



#56
 P.T. RECORD Sta 721.78.21
 Fd sm P.K. on Surface
 ON & PAVT
 Reset P.K./WASHER
 5-23-96

#55
 RECORD P.I. Sta 720+94.50
 Fd R.R. SPIKE 2" DEEP
 ON & Set sm R.R. Spike
 5-23-96

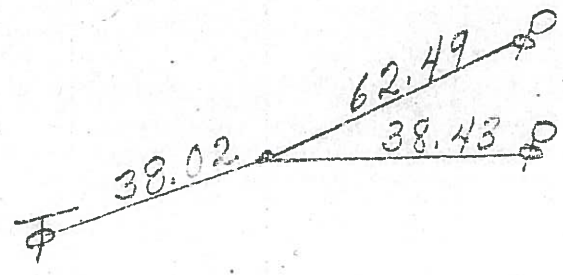
#54
 PC RECORD 720+10.79
 Fd P.K. NAIL
 ON &
 Set P.K./WASHER
 5-23-96



PERSONNEL	TITLE	PERSONNEL	TITLE	COUNTY	DATE	WEATHER	TEMP.	JOB NO.
Schneider				Ottawa	5-18-71	Windy	7.5°	
Mosser				S. R. 53				
Boracup				SEC				
Gylden								
DESCRIPTION	S.R. # 163 North							
	LEFT	CENTER LINE	RIGHT					

3/12/84
20°
windy
overcast

P.T. 721+78.21
R.R. Spk.



56

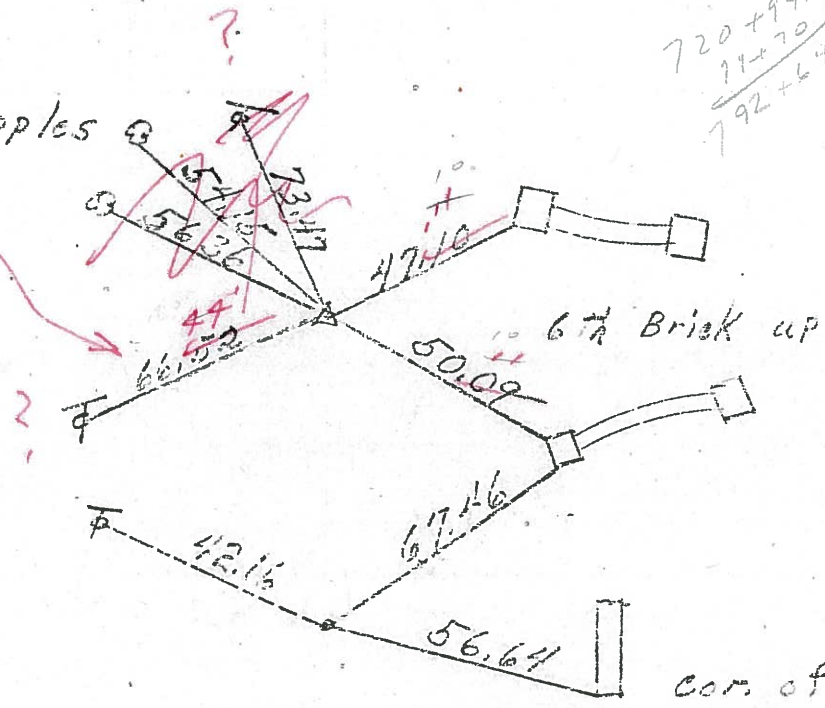
3/23/84

34°

14" Apples

$$\frac{720 + 94.50}{71 + 70} = 792 + 64.50$$

P.I. R/W
720+94.50
R.R. Spk.

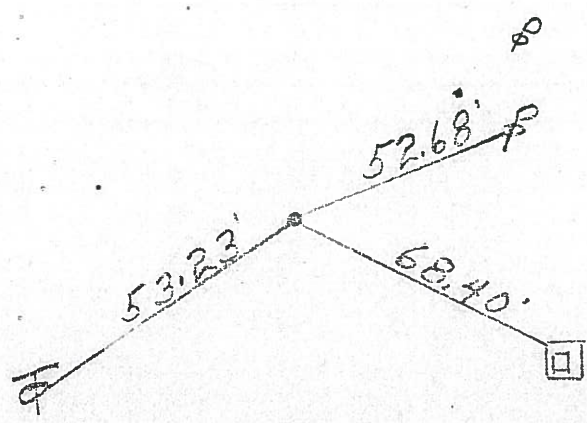


55

P.C. 720+10.79
R.R. Spk.

54

S.T. 711+17.47
R.R. Spk.
with head off

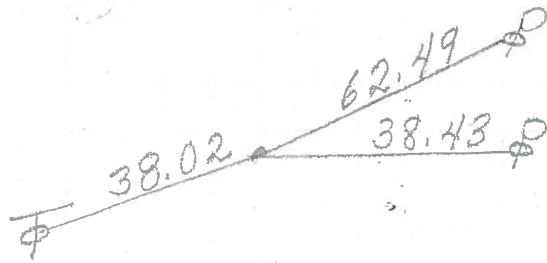


53

conc base of
76 gas sign

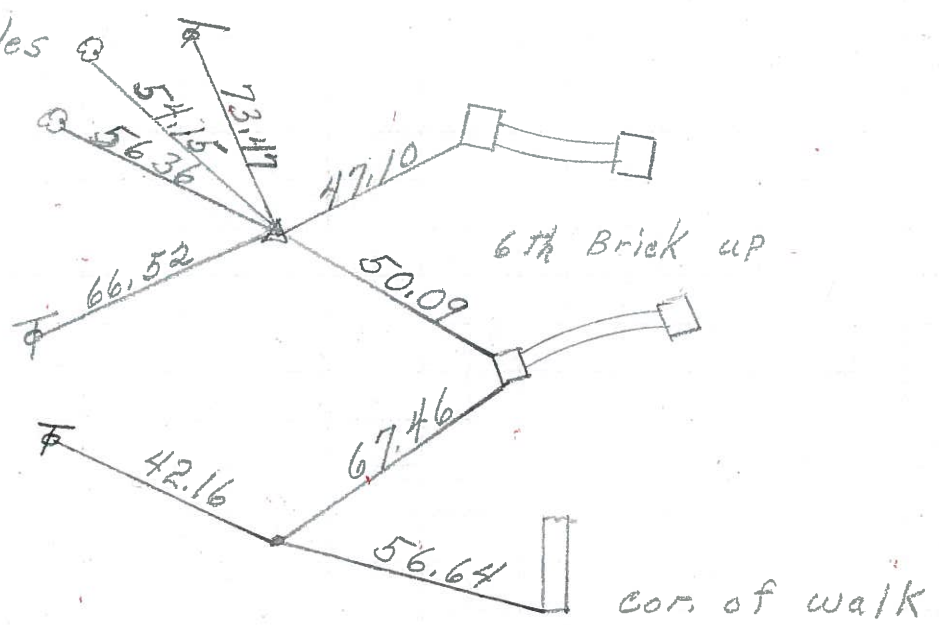
PERSONNEL	TITLE	PERSONNEL	TITLE	COUNTY	DATE
<u>Schneider</u>				<u>Ottawa</u>	<u>5-18-71</u>
<u>Mosser</u>				S. R. <u>53</u>	WEATHER <u>Windy</u>
<u>Barbour</u>				SEC. _____	TEMP. <u>75°</u>
<u>Geyman</u>				DESCRIPTION <u>S.R. # 163 North</u>	JOB NO. _____
	LEFT	CENTER LINE	RIGHT		

P.T. 721+78.21
R.R. spk.



56

P.I.
720+94.50
R.R. spk.

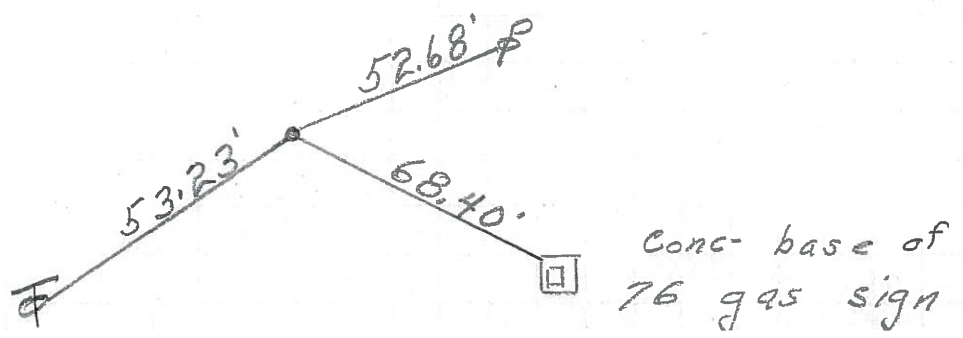


55

P.C. 720+10.79
R.R. spk.

54

S.T. 711+17.47
R.R. spk.
with head off



53