

O.D.O.T. DISTRICT 2 SURVEY OFFICE (USE ONLY)

PERSONNEL

REFERENCE NO. 58

SHEET 16 OF 34

NOTES RHOADES

DATE 8/24/22

ROUTE SR 53

H.C. NIESE

WEATHER SUNNY

COUNTY OTTAWA

R.C. AUBLE

TEMP. 80°

TOWNSHIP CATAWBA

SECTION 4-28

DWG BY RHOADES

PID 102905

CONNECTICUT WESTERN RESERVE

TYPE MONUMENT SM.R.R.SPIKE

NOTE:  
THIS MAP IS FOR ODOT PURPOSES ONLY.  
TO INDEX REFERENCE TIES, AND DOES NOT  
REPRESENT TRUE LAND SUBDIVISION.

ON SURFACE - ~~BELOW~~ ON

OFFSET  $\varnothing$  PAVEMENT 14' ~~RT~~ : RT

2' RT TO RT EDGE PAVEMENT

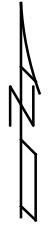
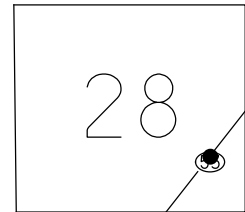
STATION: 807+56.48

HORZ.DATUM: NAD83 2011

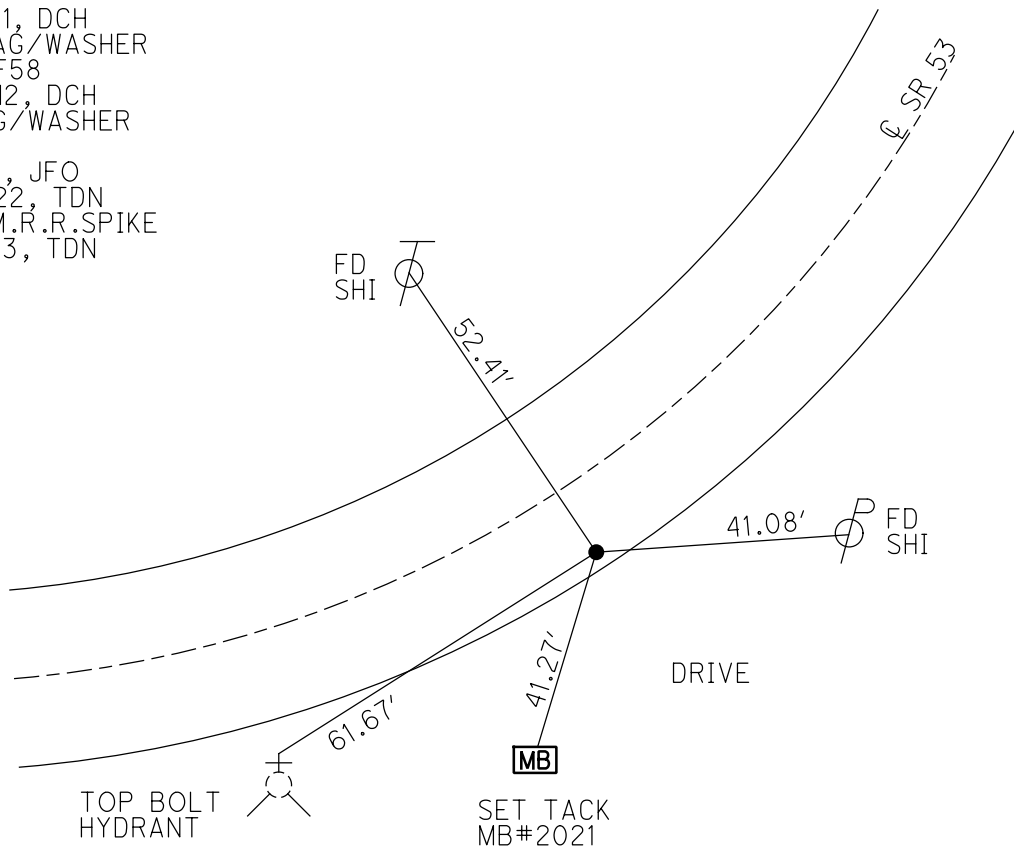
GEOID: NAVD88 2018

GRID: NORTHING: 687610.882

EASTING: 1876166.425



RECORD: P.I.  
 STA. 734+73.52  
 DNF P.K.NAIL OVER  
 IPIN, 6/12/95  
 FD P.K.NAIL  
 REF58  
 8/26/11, DCH  
 SET MAG/WASHER  
 NEWREF58  
 7/30/12, DCH  
 FD MAG/WASHER  
 REF58  
 3/4/21, JFO  
 8/24/22, TDN  
 SET SM.R.R.SPIKE  
 5/16/23, TDN

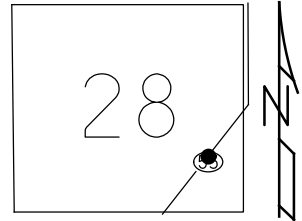


O.D.O.T. DISTRICT 2 SURVEY OFFICE (USE ONLY)

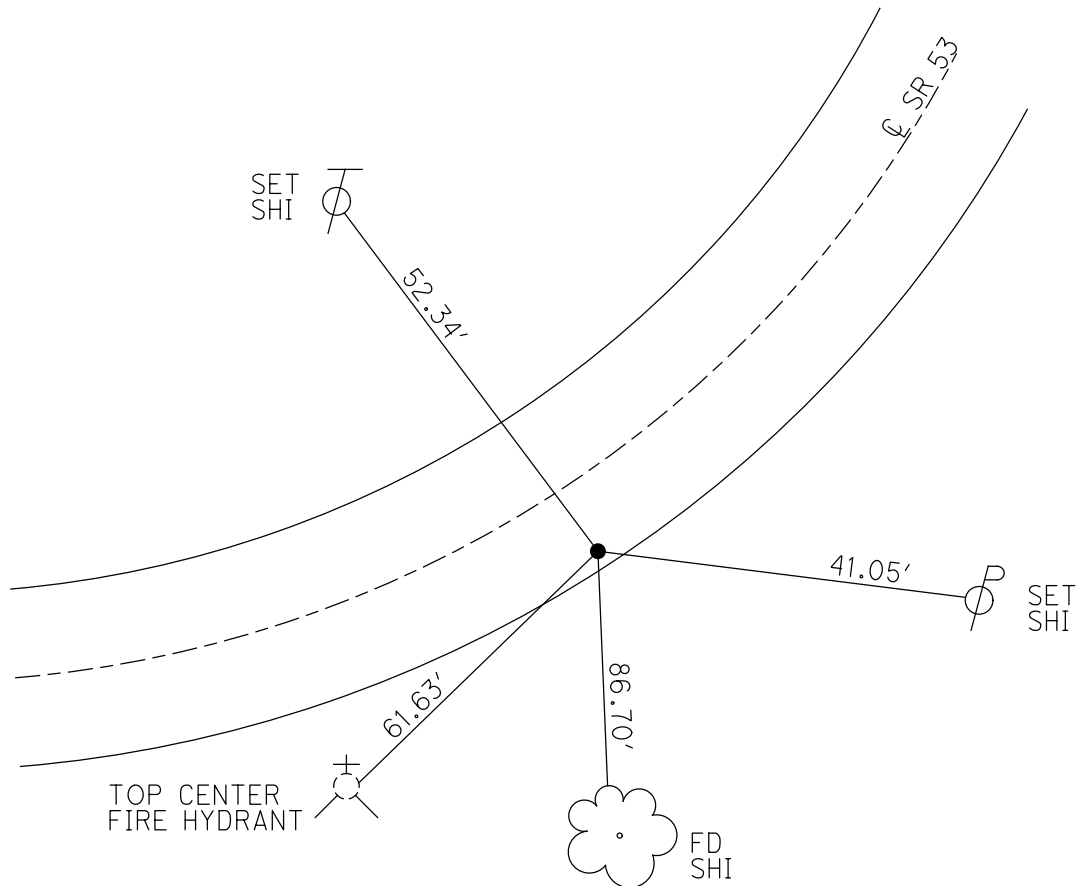
PERSONNEL \_\_\_\_\_ REFERENCE NO. 58 SHEET 19 OF 36  
 NOTES HOMAN DATE 8/26/11 ROUTE SR 53  
 H.C. ROUSOS WEATHER CLOUDY COUNTY OTTAWA  
 R.C. HARBAUGH TEMP. 75° TOWNSHIP CATAWBA ISL  
 \_\_\_\_\_ SECTION 4-28

TYPE MONUMENT P.K.NAIL  
 ON SURFACE - ~~BELOW~~ ON  
~~LEFT~~ - CL PAV'T - RIGHT 14'  
2' RT TO RT EDGE PAVEMENT  
 S.L.M. 808+15.4  
 GRID: NORTHING: 687610.844 EASTING: 1876166.304

NOTE:  
THIS MAP IS FOR ODOT PURPOSES ONLY.  
TO INDEX REFERENCE TIES, AND DOES NOT  
REPRESENT TRUE LAND SUBDIVISION.



RECORD: P.I.  
 STA. 734+73.52  
 DNF P.K.NAIL OVER  
 IPIN, 6/12/95  
 FD P.K.NAIL  
 GPS, REF58  
 SET MAG/WASHER  
 NEWREF58  
 7/30/12, DCH



# O.D.O.T. DISTRICT 2 SURVEY OFFICE

PERSONNEL

REFERENCE NO. 58

SHEET 14 OF 30

NOTES LOHRKE

H.C. CANTERBURY

R.C. ROUSOS

DATE 6-12-95

WEATHER FAIR

TEMP. 62

ROUTE S.R. 53

COUNTY OTTAWA

TOWNSHIP CATAWBA

SECTION \_\_\_\_\_

T \_\_\_\_\_ R \_\_\_\_\_

DID NOT FIND

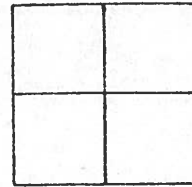
TYPE MONUMENT P.K. NAIL - OVER IRON PIN

ON SURFACE - BELOW \_\_\_\_\_

~~LEFT - C~~ PAV'T. - RIGHT ± 14.0' Rt

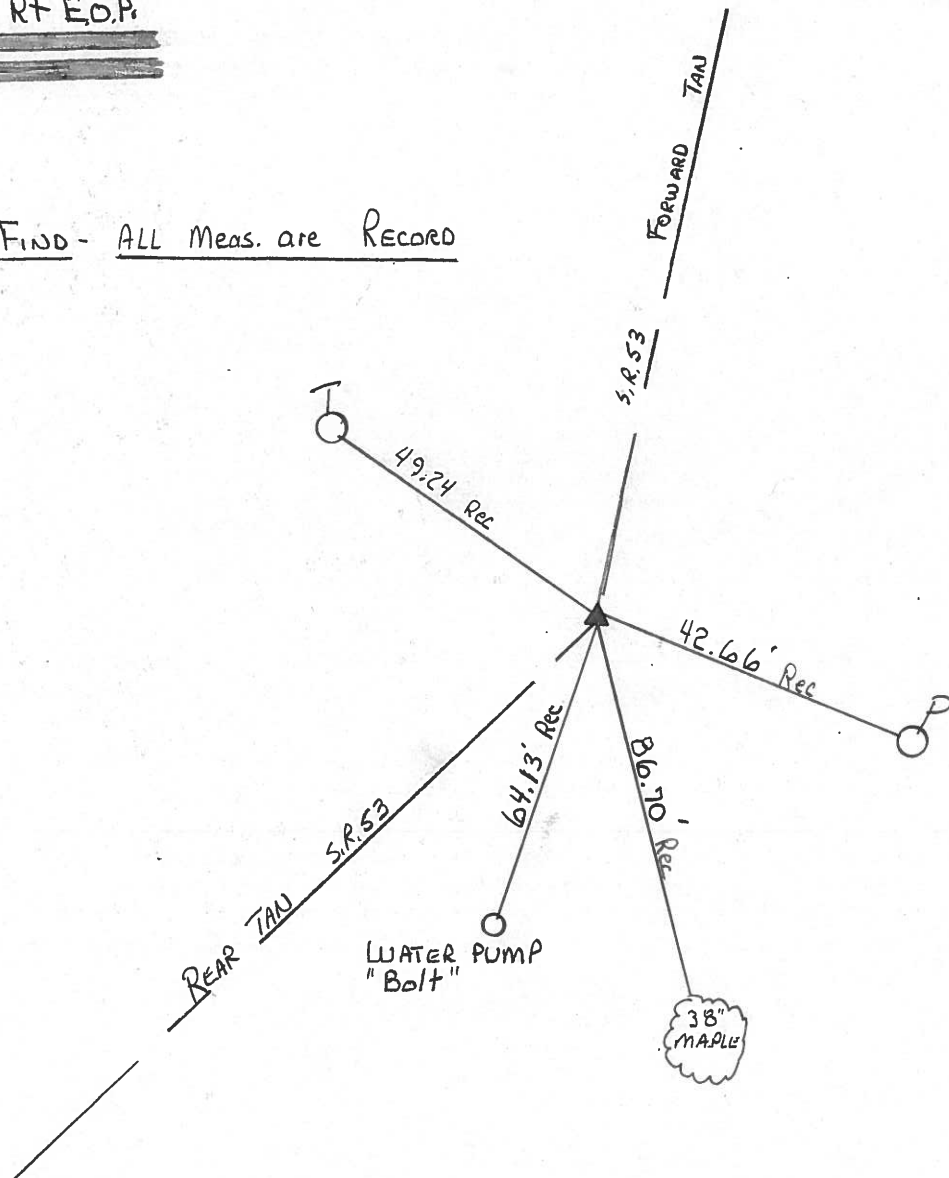
~~2' Rt of~~ 2' Rt EDGE PAVEMENT

S.L.M. CALC. 808408



Record P.I. Sta 734+73.52  
± 2' Rt of Rt E.O.P.

DID NOT FIND - ALL Meas. are Record



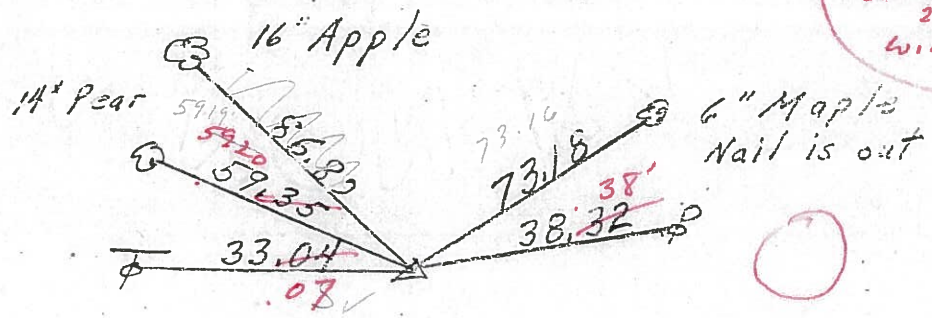
PERSONNEL	TITLE	PERSONNEL	TITLE	COUNTY	DATE
Schneider				Ottawa	5-18-71
Messer				S. R. 53	WEATHER Windy
Barbour				SEC.	TEMP. 80°
Geyman					
DESCRIPTION SR. 163 North					JOB NO.
	LEFT	CENTER LINE	RIGHT		

34°  
windy sunny  
3/23/84

741+02.13  
71+70  
812+72.13

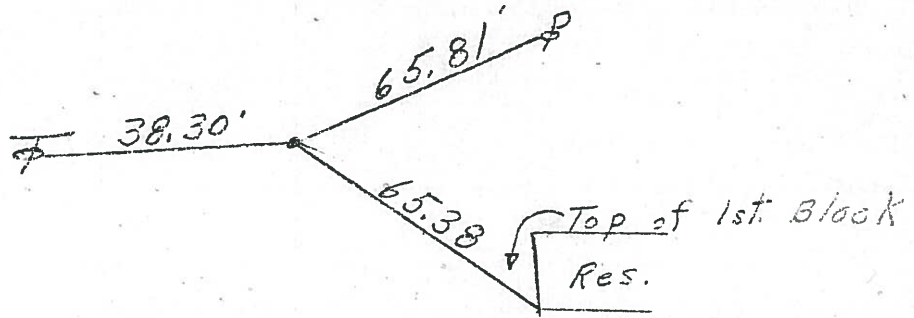
3/12/84  
overcast  
20°  
windy

P.I.  
741+02.13  
R.R. spk.



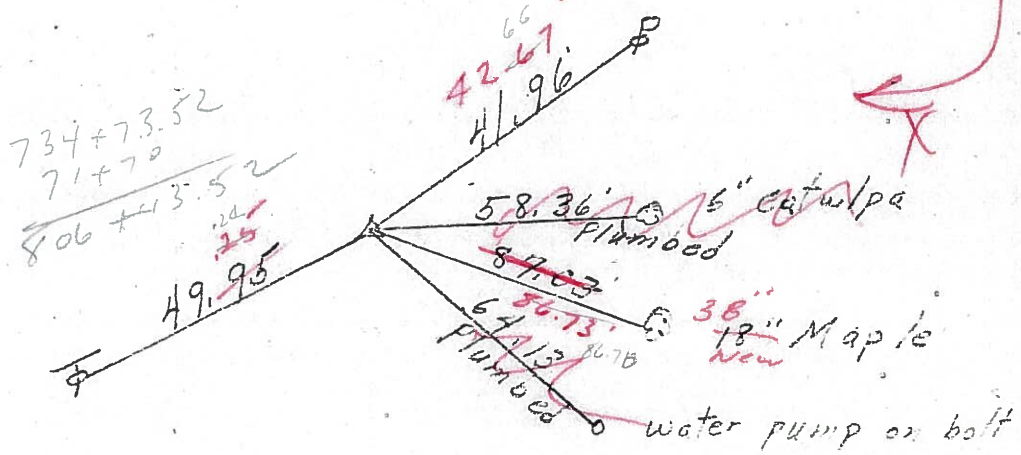
60

S.T. 737+30.15  
R.R. spk.



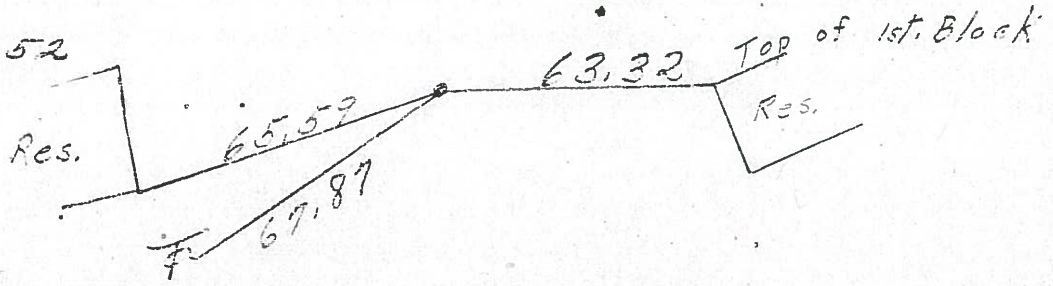
59

P.I. R/W  
734+73.52  
Iron pin  
2" Rt. of Rt. edge  
of Pavmt.



58

T.S. 734+73.52  
R.R. Spk.

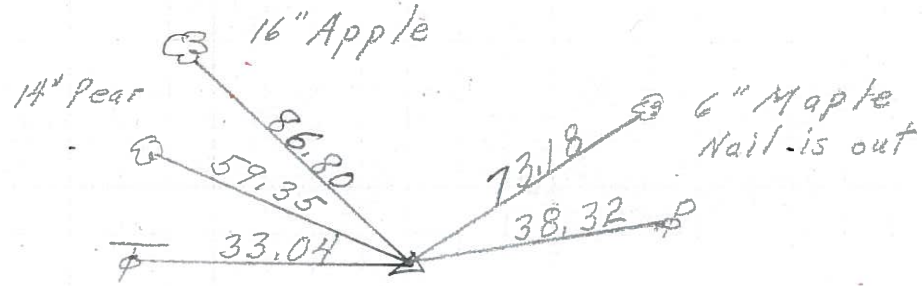


57

PERSONNEL	TITLE	PERSONNEL	TITLE	COUNTY	DATE
Schneider				Ottawa	5-18-71
Mosser				S. R. 53	WEATHER Windy
Barbour				SEC.	TEMP. 80°
Geyman					
DESCRIPTION	S.R. 163 North				JOB NO.
	LEFT	CENTER LINE	RIGHT		

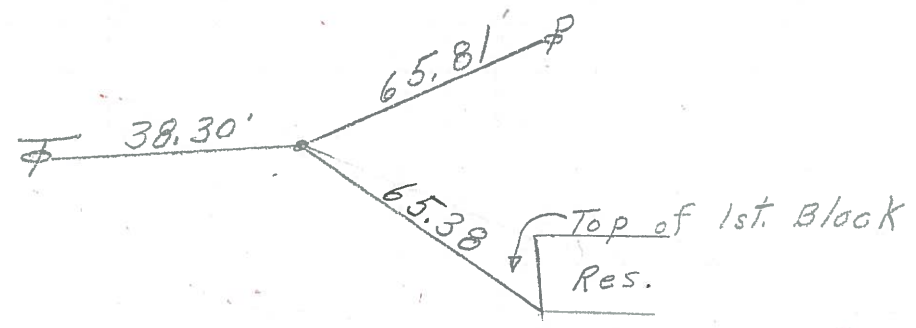
P.I.  
741+02.13  
R.R. Spk.

60



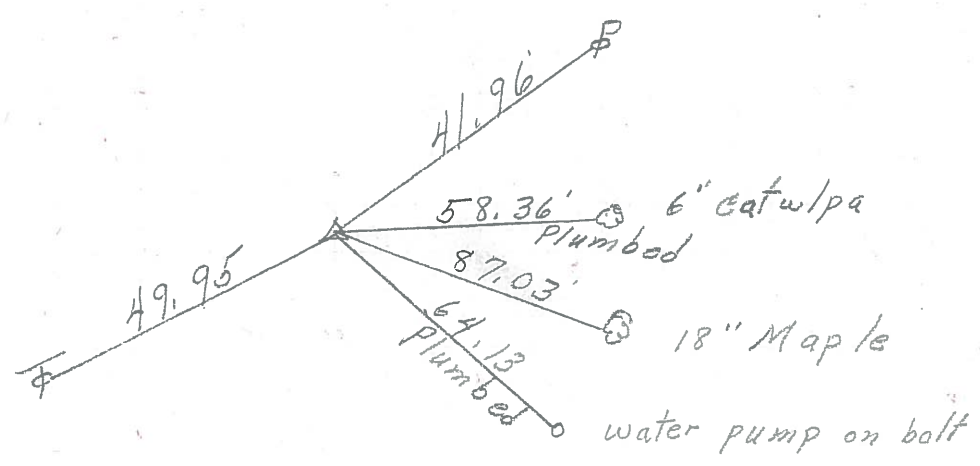
S.T. 737+30.15  
R.R. Spk.

59



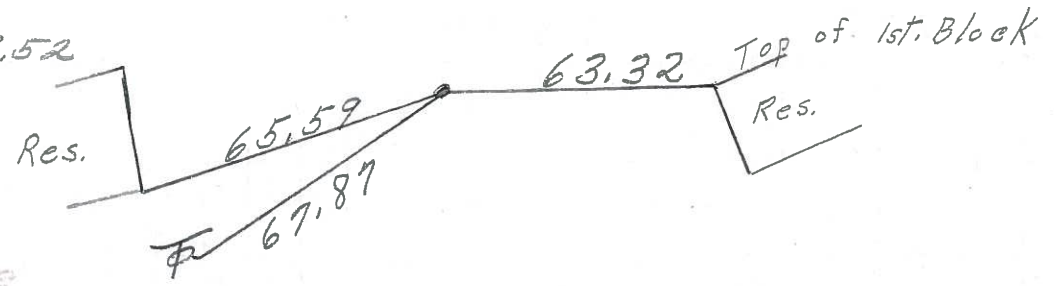
P.I.  
734+73.52  
Iron pipe  
2" Rt. of Rt. edge  
of Pavmt.

58



T.S. 734+73.52  
R.R. Spk.

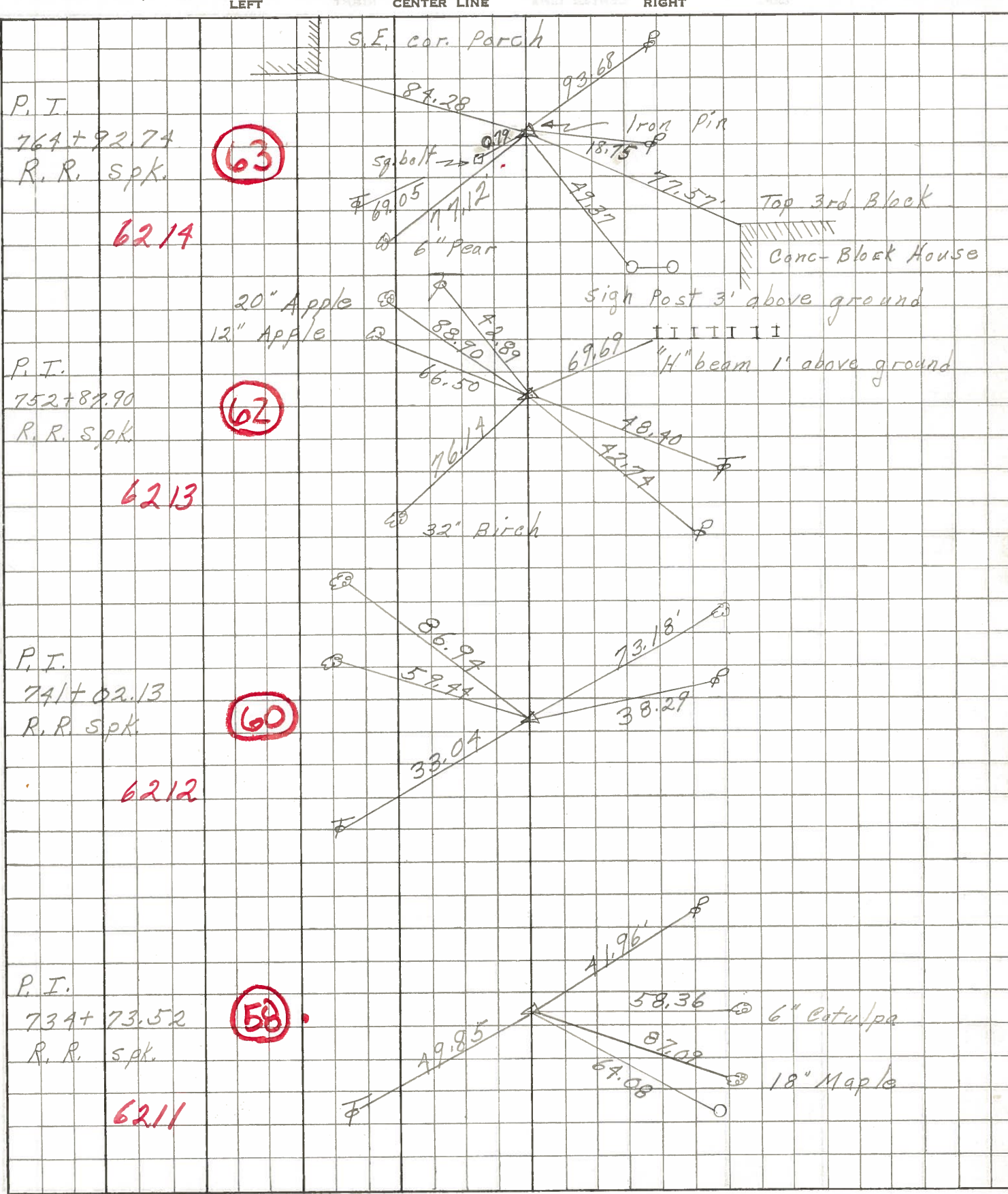
57





PERSONNEL	TITLE	PERSONNEL	TITLE	COUNTY	DATE
Schneider		Potts		O'ahu	8-2-68
Mosser				S. R. 53	WEATHER Fair
Barbour				SEC. S.R. #163 North	TEMP. 80°
Redding					

DESCRIPTION Ties for Control Points JOB NO. \_\_\_\_\_





PERSONNEL TITLE PERSONNEL TITLE  
 SWORDEN \_\_\_\_\_  
 HOLCOMBE \_\_\_\_\_  
 SAGE \_\_\_\_\_  
 AULT \_\_\_\_\_

COUNTY OTTAWA DATE JAN. 23, 1958  
 S. R. #53 WEATHER Cloudy  
 SEC. \_\_\_\_\_ TEMP. +30°

DESCRIPTION TR PINS LEFT CENTER LINE RIGHT JOB NO. \_\_\_\_\_

