

O.D.O.T. DISTRICT 2 SURVEY OFFICE (USE ONLY)

PERSONNEL \_\_\_\_\_ REFERENCE NO. 59 SHEET 17 OF 34  
 NOTES RHOADES DATE 8/24/22 ROUTE SR 53  
 H.C. NIESE WEATHER SUNNY COUNTY OTTAWA  
 R.C. AUBLE TEMP. 80° TOWNSHIP CATAWBA  
 SECTION 4-28

DWG BY RHOADES PID 102905

TYPE MONUMENT MAG/WASHER

ON SURFACE - ~~BELOW~~ ON

OFFSET C PAVEMENT ON LT : RT

11.8' TO RT EDGE PAVEMENT

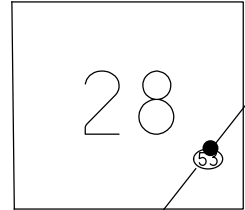
STATION: 810+45.5

HORZ.DATUM: NAD83 2011 GEOID: NAVD88 2018

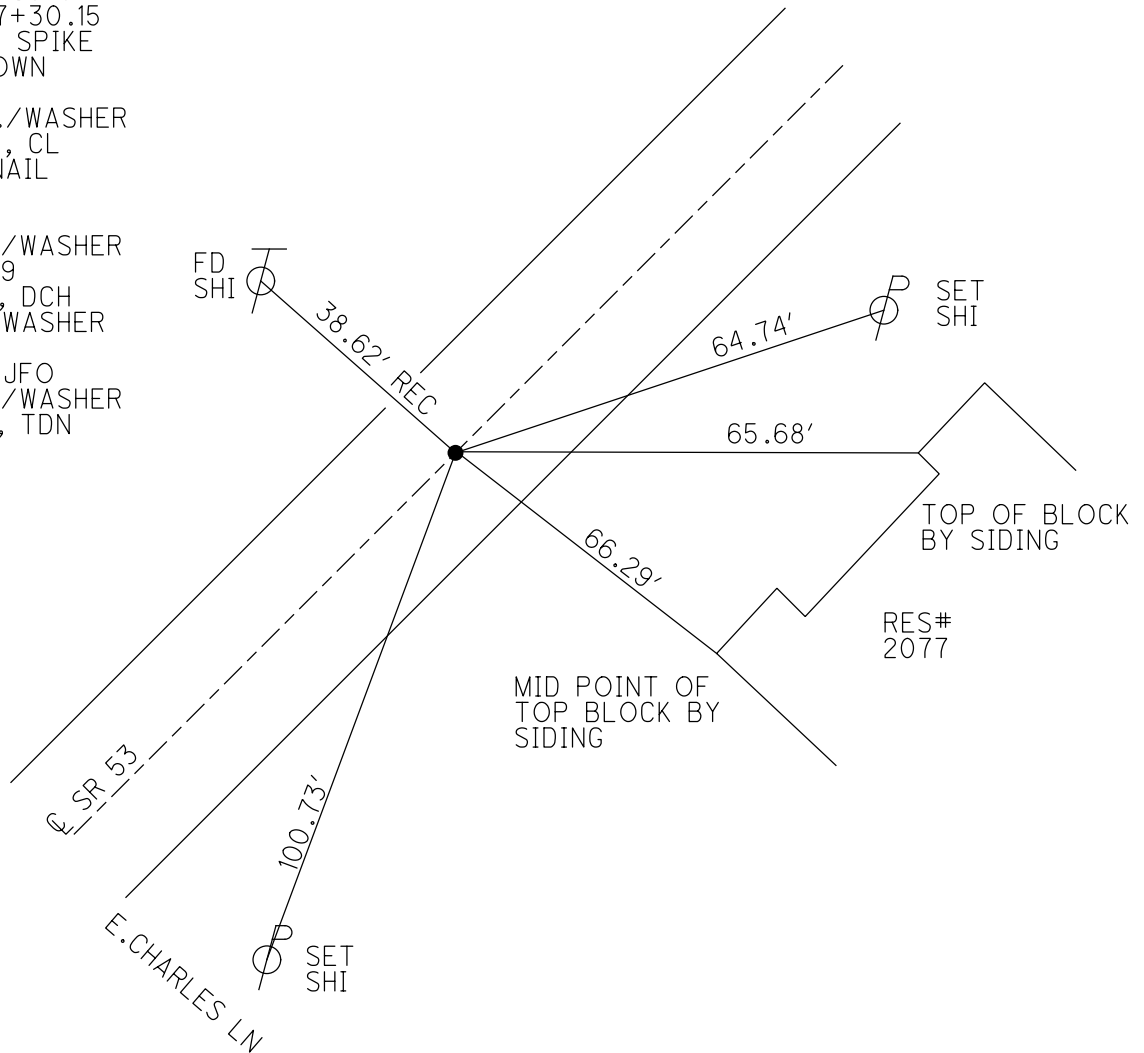
GRID: NORTHING: 687830.262 EASTING: 1876292.112

CONNECTICUT WESTERN RESERVE

NOTES:  
THIS MAP IS FOR ODOT PURPOSES ONLY  
TO INDEX REFERENCE TIES, AND DOES NOT  
REPRESENT TRUE LAND SUBDIVISION.



RECORD: S.T.  
 STA. 737+30.15  
 FD BOAT SPIKE  
 1 1/2" DOWN  
 6/12/95  
 SET P.K./WASHER  
 5/23/96, CL  
 FD P.K.NAIL  
 REF59  
 8/26/11  
 SET MAG/WASHER  
 NEWREF59  
 7/30/12, DCH  
 FD MAG/WASHER  
 REF59  
 3/4/21, JFO  
 SET MAG/WASHER  
 5/16/23, TDN



O.D.O.T. DISTRICT 2 SURVEY OFFICE (USE ONLY)

PERSONNEL \_\_\_\_\_ REFERENCE NO. 59 SHEET 20 OF 36

NOTES HOMAN DATE 8/26/11 ROUTE SR 53

H.C. ROUSOS WEATHER CLOUDY COUNTY OTTAWA

R.C. HARBAUGH TEMP. 75° TOWNSHIP CATAWBA ISL

SECTION 4-28

TYPE MONUMENT P.K.NAIL

ON SURFACE - ~~BELOW~~ \_\_\_\_\_ ON \_\_\_\_\_

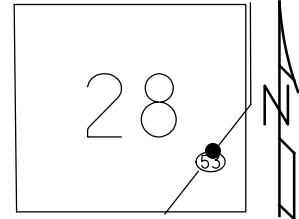
LEFT - CL PAV'T - RIGHT \_\_\_\_\_ ON \_\_\_\_\_

11.8' TO RT \_\_\_\_\_ EDGE PAVEMENT

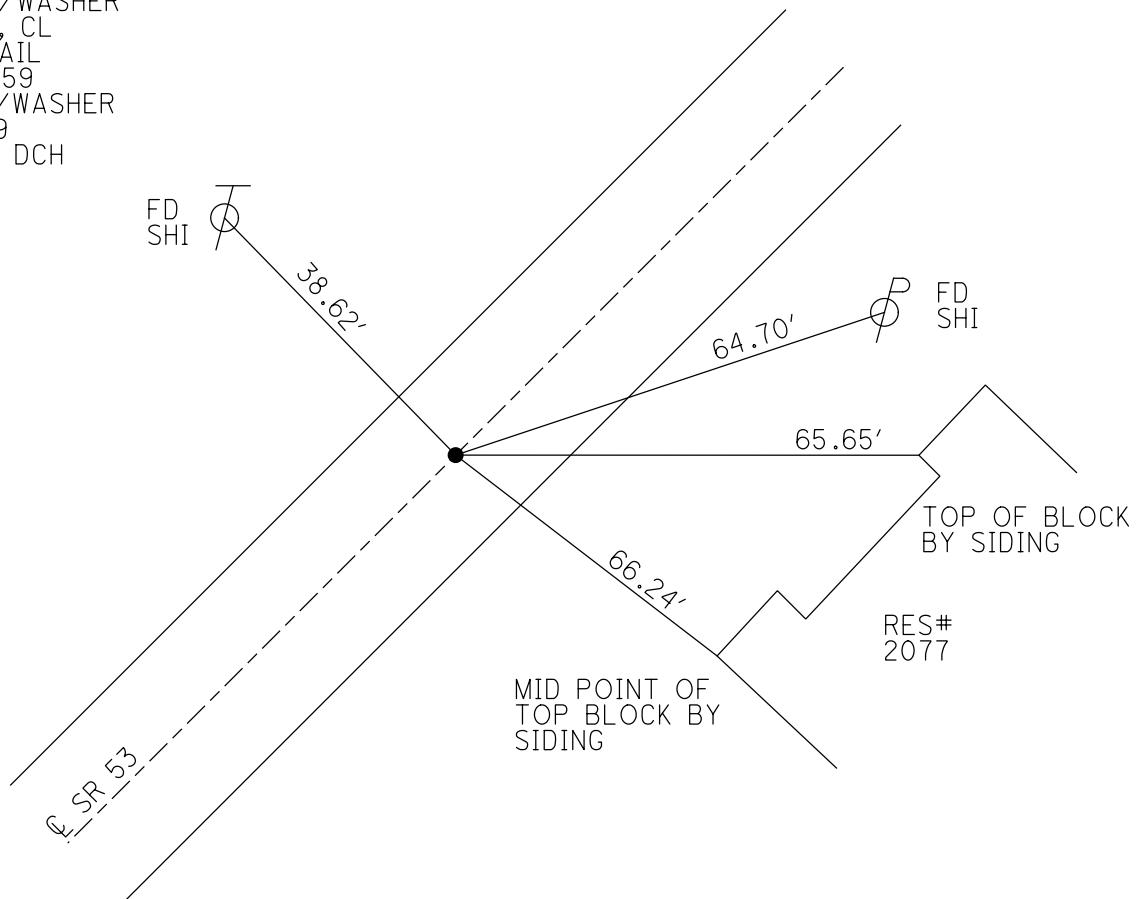
S.L.M. 810+70.48

GRID: NORTHING: 687830.255 EASTING: 1876291.977

NOTE:  
THIS MAP IS FOR ODOT PURPOSES ONLY  
TO INDEX REFERENCE TIES, AND DOES NOT  
REPRESENT TRUE LAND SUBDIVISION.



RECORD: S.T.  
STA. 737+30.15  
FD BOAT SPIKE  
1 1/2" DOWN, 6/12/95  
SET P.K./WASHER  
5/23/96, CL  
FD P.K.NAIL  
GPS, REF59  
SET MAG/WASHER  
NEWREF59  
7/30/12, DCH



# O.D.O.T. DISTRICT 2 SURVEY OFFICE

PERSONNEL \_\_\_\_\_

REFERENCE NO. 59

SHEET 15 OF 30

NOTES LOEHRKE

H.C. Rousas

DATE 6-12-95

ROUTE S.R. 53

R.C. CANTERBURY

WEATHER FAIR

COUNTY OTTAWA

TEMP. +68

TOWNSHIP CATAWBA

SECTION \_\_\_\_\_

T \_\_\_\_\_ R \_\_\_\_\_

TYPE MONUMENT Boat Spike

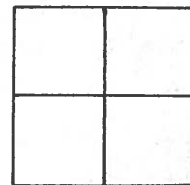
*Set P.K. / WASHER  
5-23-96*

~~ON SURFACE~~ - BELOW 1/2" Below

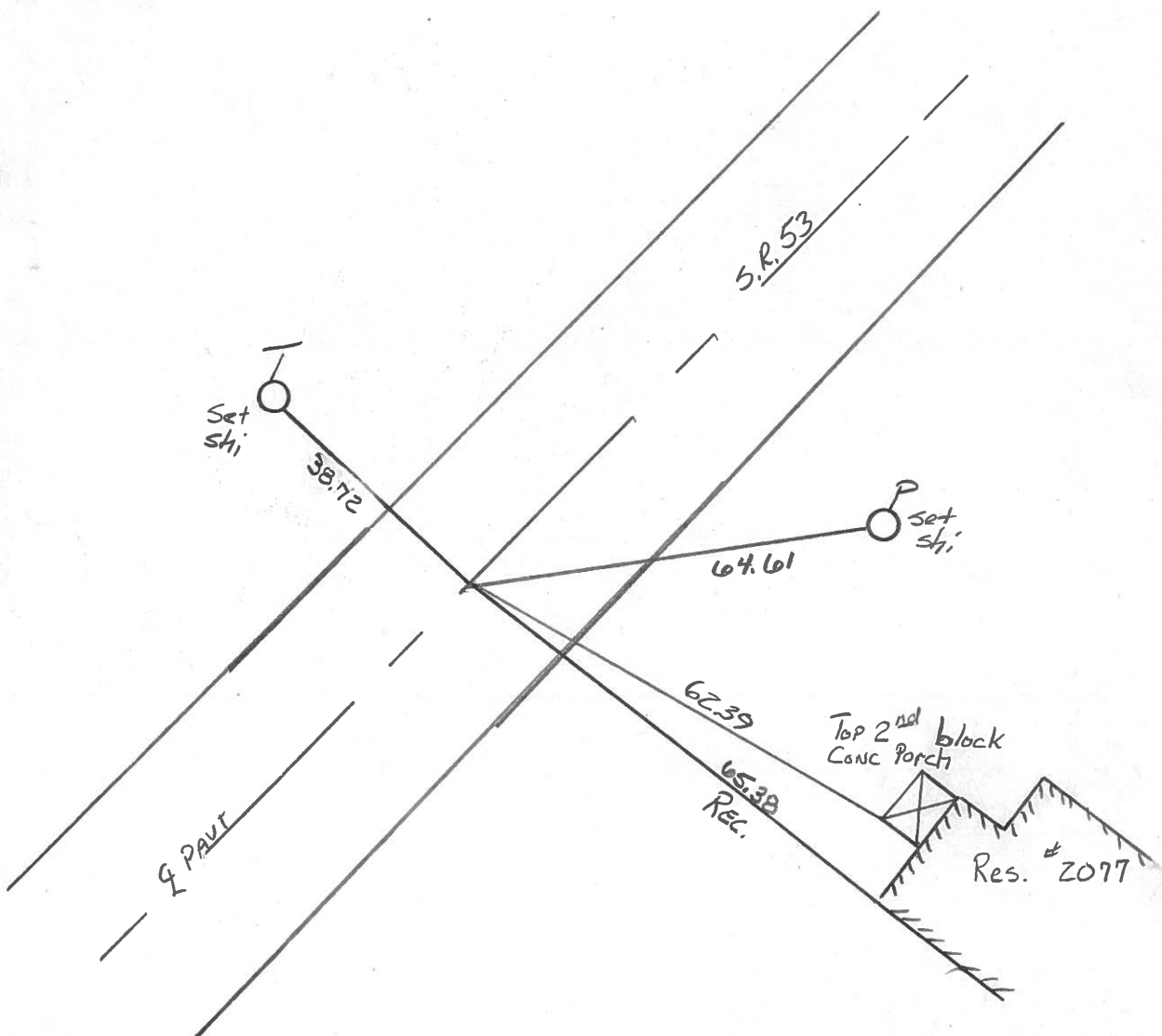
~~LEFT - C PAV'T.~~ - ~~RIGHT~~ Yes

11.8 TO Rt EDGE PAVEMENT

S.L.M. 8/0 +65



S.T. RECORD  
Sta 737+30.15



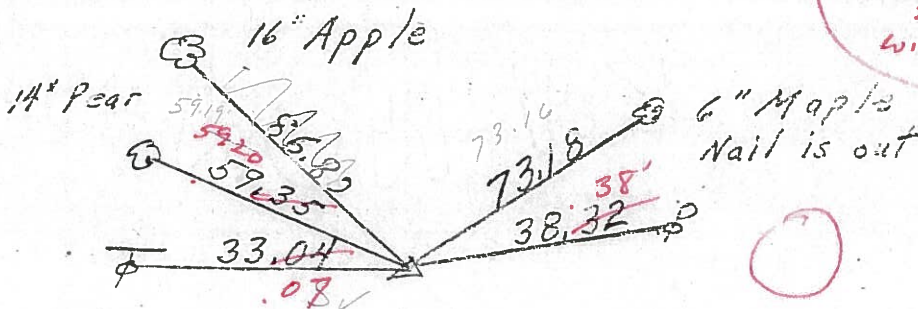
PERSONNEL	TITLE	PERSONNEL	TITLE	COUNTY	DATE
Schneider				Ottawa	5-18-71
Messer				S. R. 53	WEATHER Windy
Barbour				SEC.	TEMP. 88°
Geyman					
DESCRIPTION	S.R. 163 North				JOB NO.
	LEFT	CENTER LINE	RIGHT		

34°  
windy sunny  
8/23/84

741+02.13  
71+70  
812+72.13

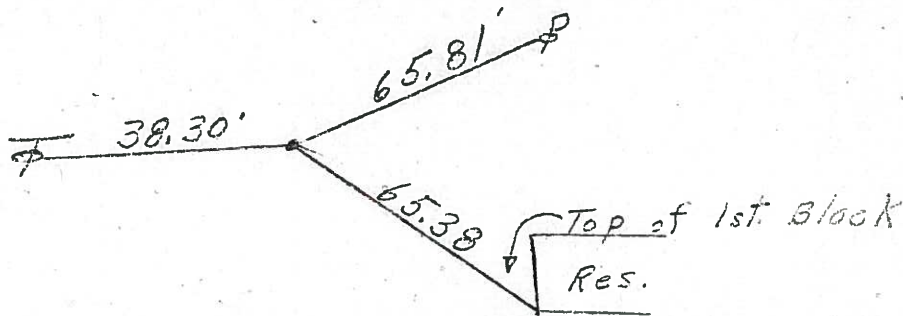
3/12/84  
overcast  
20°  
windy

P.I.  
741+02.13  
R.R. spk.



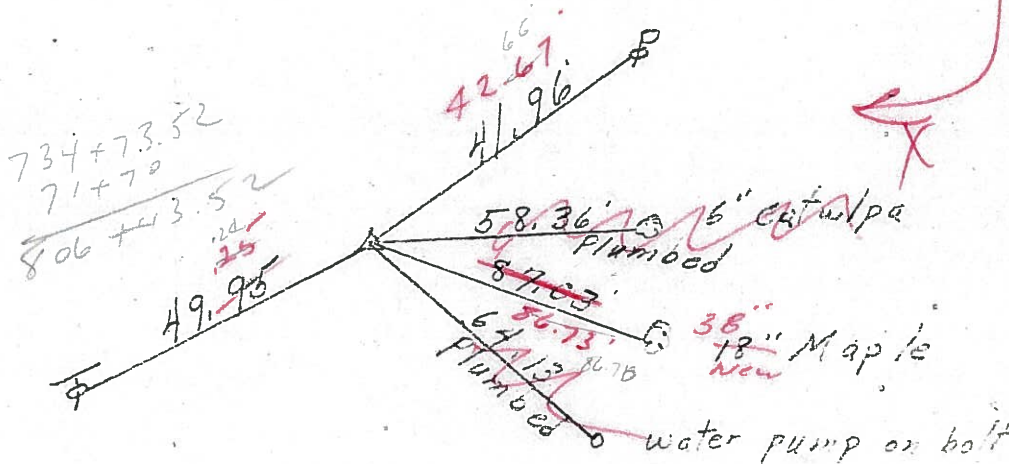
60

S.T. 737+30.15  
R.R. spk.



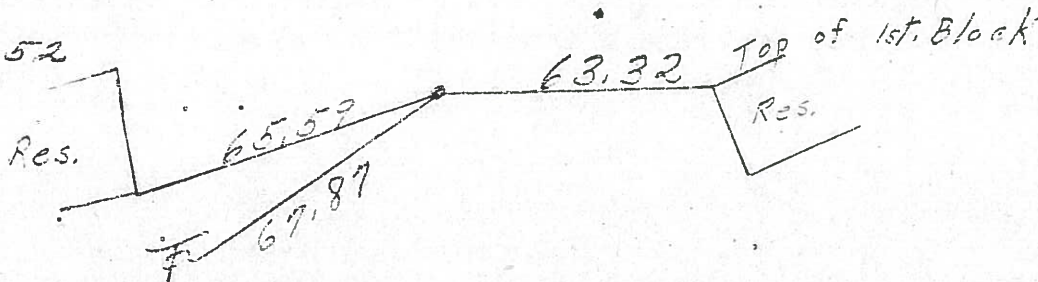
59

P.I. R/W  
734+73.52  
Iron pin  
2" Rt. of Rt. edge  
of Pavmt.



58

T.S. 734+73.52  
R.R. Spk.

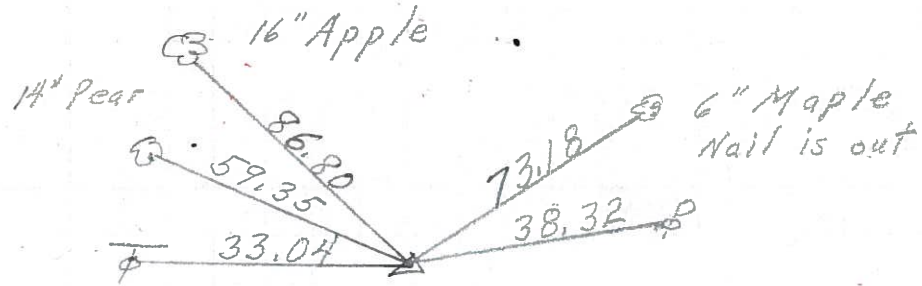


57

PERSONNEL	TITLE	PERSONNEL	TITLE	COUNTY	DATE
Schneider				Ottawa	5-18-71
Mosser				S. R. 53	WEATHER Windy
Barbour				SEC.	TEMP. 80°
Geyman					
DESCRIPTION	S.R. 163 North				JOB NO.
	LEFT	CENTER LINE	RIGHT		

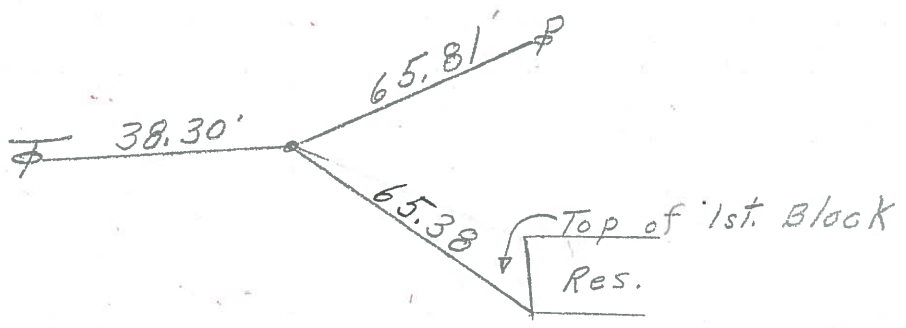
P.I.  
741+02.13  
R.R. Spk.

60



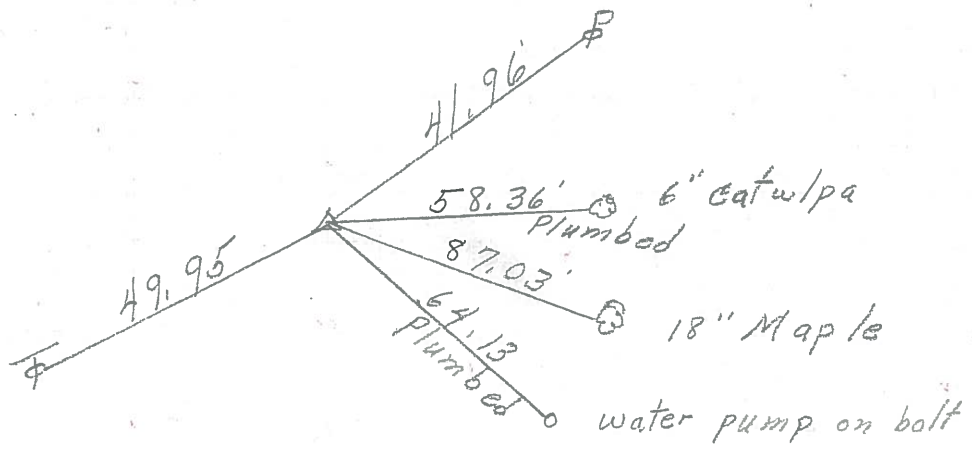
S.T. 737+30.15  
R.R. Spk.

59



P.I.  
734+73.52  
Iron pin  
2" Rt. of Rt. edge  
of Pavmt.

58



T.S. 734+73.52  
R.R. Spk.

57

