

O.D.O.T. DISTRICT 2 SURVEY OFFICE (USE ONLY)

PERSONNEL

REFERENCE NO. 65

SHEET 23 OF 34

NOTES RHOADES DATE 8/24/22
 H.C. NIESE WEATHER SUNNY
 R.C. AUBLE TEMP. 80°

ROUTE SR 53
 COUNTY OTTAWA
 TOWNSHIP CATAWBA
 SECTION 4-28

DWG BY RHOADES PID 102905

CONNECTICUT WESTERN RESERVE

TYPE MONUMENT MAG/WASHER

NOTE:
THIS MAP IS FOR ODOT PURPOSES ONLY
TO INDEX REFERENCE TIES, AND DOES NOT
REPRESENT TRUE LAND SUBDIVISION.

ON SURFACE - ~~BELOW~~ ON

OFFSET CL PAVEMENT 1.2' LT : ~~RT~~

11.0' TO LT EDGE PAVEMENT

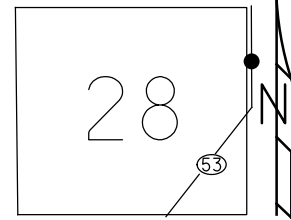
STATION: 864+46.67

HORZ.DATUM: NAD83 2011

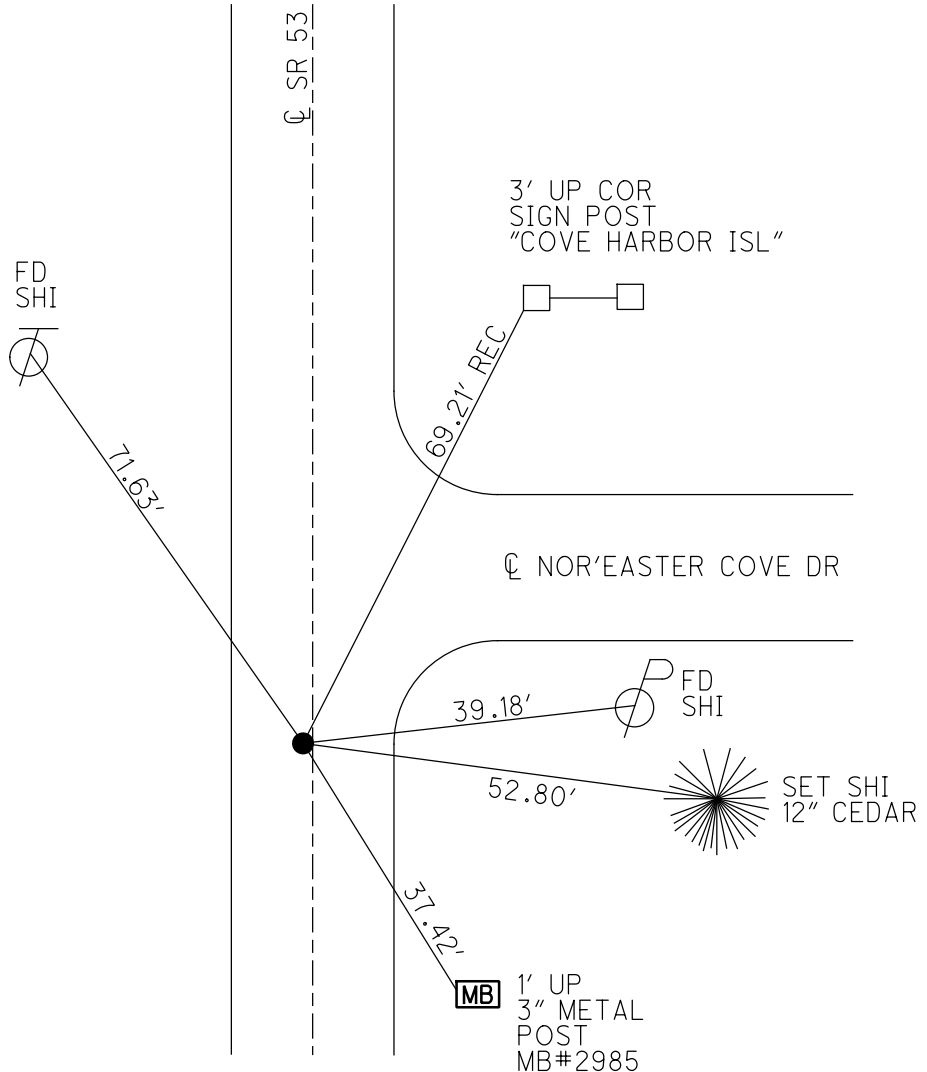
GEOID: NAVD88 2018

GRID: NORTHING: 692875.159

EASTING: 1877610.186



RECORD: P.I.
 STA. 791+33.55
 FD P.K./WASHER
 6/12/95
 SET P.K./WASHER
 5/22/96, CL
 FD R.R.SPIKE
 3" DOWN
 REF65
 8/26/11, DCH
 SET MAG/WASHER
 NEWREF65
 8/6/12, DCH
 FD MAG/WASHER
 REF65
 3/8/21, JFO
 SET MAG/WASHER
 5/16/23, TDN

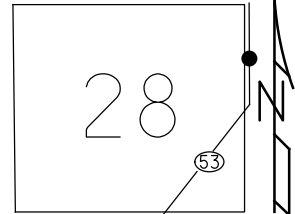


O.D.O.T. DISTRICT 2 SURVEY OFFICE (USE ONLY)

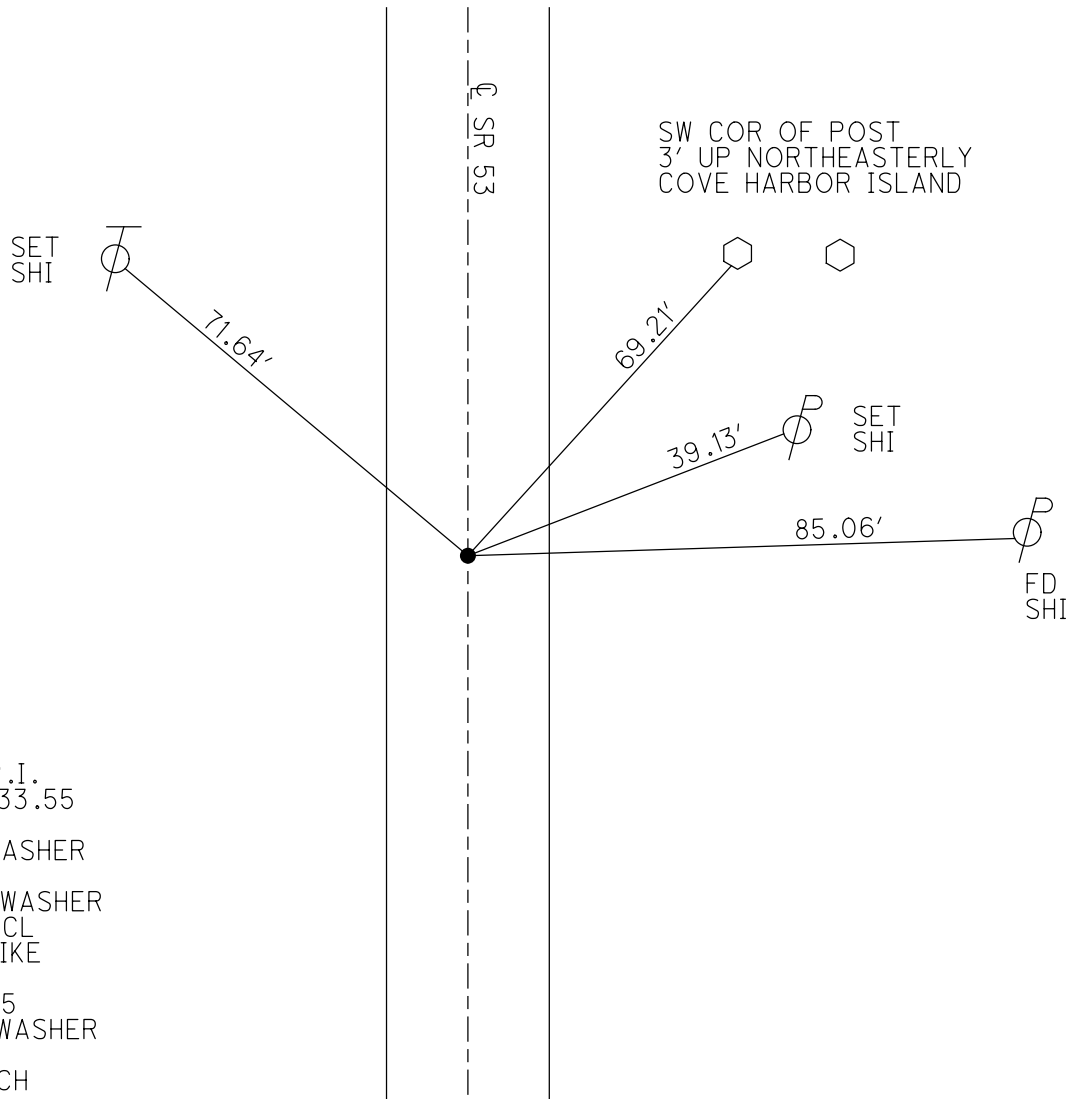
| | | | | | | |
|-----------|---------------|---------|---------|----------|-------------|----|
| PERSONNEL | REFERENCE NO. | 65 | SHEET | 26 | OF | 36 |
| NOTES | HOMAN | DATE | 8/26/11 | ROUTE | SR 53 | |
| H.C. | ROUSOS | WEATHER | SUNNY | COUNTY | OTTAWA | |
| R.C. | HARBAUGH | TEMP. | 80° | TOWNSHIP | CATAWBA ISL | |
| | | | | SECTION | 4-28 | |

TYPE MONUMENT R.R.SPIKE
~~ON SURFACE~~ - BELOW 3"
 LEFT - CL PAV'T - ~~RIGHT~~ 0.7'
11.0' TO LT EDGE PAVEMENT
 S.L.M. 864+70.89

NOTE:
THIS MAP IS FOR ODOT PURPOSES ONLY
TO INDEX REFERENCE TIES AND DOES NOT
REPRESENT TRUE LAND SUBDIVISION.



GRID: NORTHING: 692875.052 EASTING: 1877610.089



RECORD: P.I.
 STA. 791+33.55
 CL SURVEY
 FD P.K./WASHER
 6/12/95
 SET P.K./WASHER
 5/22/96, CL
 FD R.R.SPIKE
 3" DOWN
 GPS, REF65
 SET MAG/WASHER
 NEWREF65
 8/6/12, DCH

O.D.O.T. DISTRICT 2 SURVEY OFFICE

PERSONNEL _____

REFERENCE NO. 65

SHEET 21 OF 30

NOTES LOENRKE

H.C. ROUSOS

DATE 6-12-95

ROUTE S.R. 53

R.C. CANTERBURY

WEATHER FAIR

COUNTY OTTAWA

TEMP. +74

TOWNSHIP CATAWBA

SECTION _____

T _____ R _____

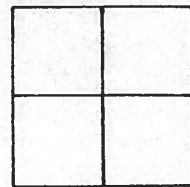
TYPE MONUMENT P.K. / WASHER 5-22-96 Reset

ON SURFACE - BELOW Yes

LEFT- & PAV'T. - RIGHT 0.7 Lt

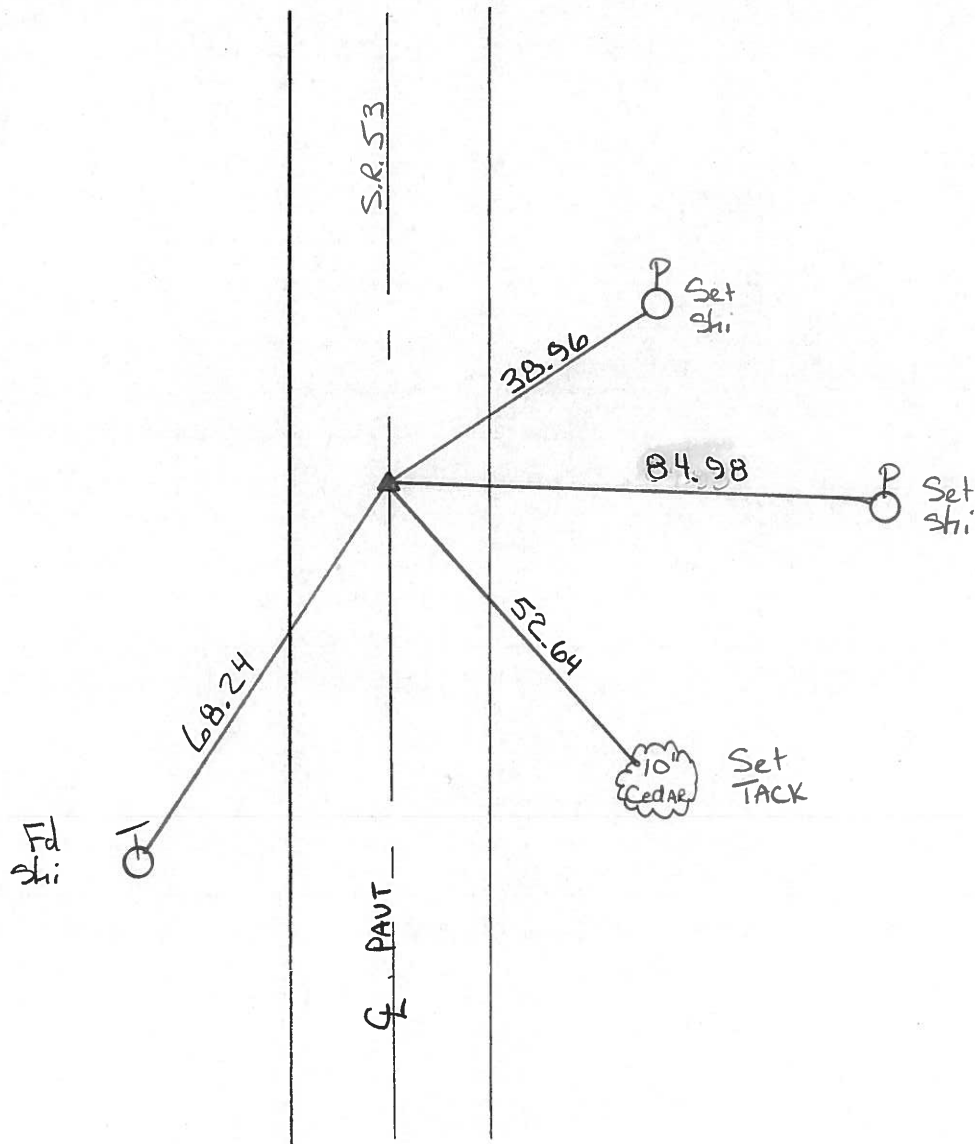
11.0 TO Lt EDGE PAVEMENT

S.L.M. 864+81



RECORD: P.O.I. of Survey

Sta 791+33.55



ODOT DISTRICT 2 SURVEY OFFICE

SHEET 14 OF

County Ottawa S.R. #53

Date 8/28/82

Township Catawba

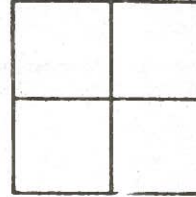
Weather sunny

Section _____

Temp. 80°

T N, R E

Personnel Cronin



PT 65

Ripple

Geyman

Barbour

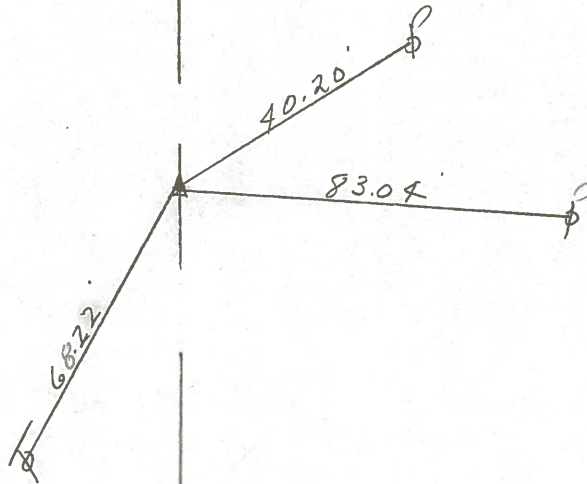


P.I. & sue.

791+33.55

set P.K. washer at top

R.R. spike



2.16 W SR # 53

| PERSONNEL | TITLE | PERSONNEL | TITLE | COUNTY | DATE |
|-----------|-------|-----------|-------|---------------------|-------------|
| | | | | Ottawa | 6-4-71 |
| | | | | S. R. 53 | WEATHER Hot |
| | | | | SEC. S.R. 163 North | TEMP. 80° |

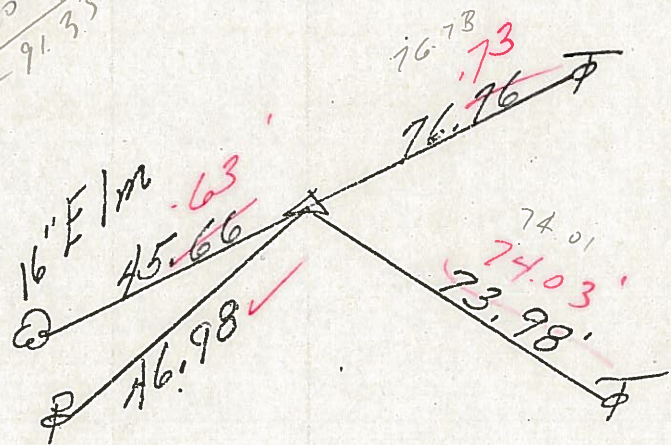
| DESCRIPTION | LEFT | CENTER LINE | RIGHT | JOB NO. |
|-------------|------|-------------|-------|---------|
|-------------|------|-------------|-------|---------|

PT R/W SUR
831+21.35
R.R. spk

67

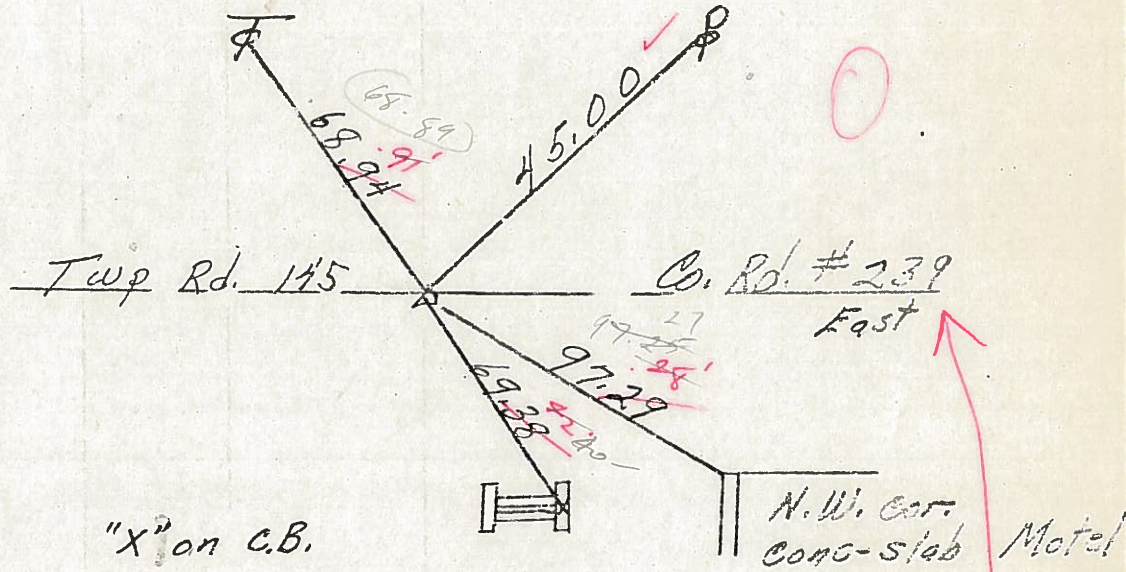
831+421.35
71+70
902+91.35

3/12/84
overcast
20° windy



PT R/W SUR
806+09.85
R.R. spk

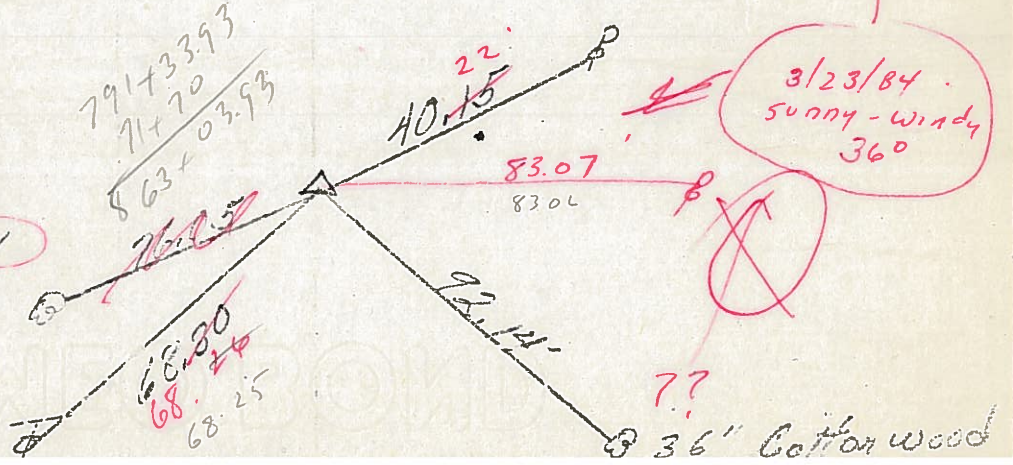
66



"X" on C.B.

791+33.93 = Const. &
PT. 791+33.55 Survey
R.R. spk.

1' L+ & PVT



3/23/84
sunny-windy
36°

36" Cotton wood

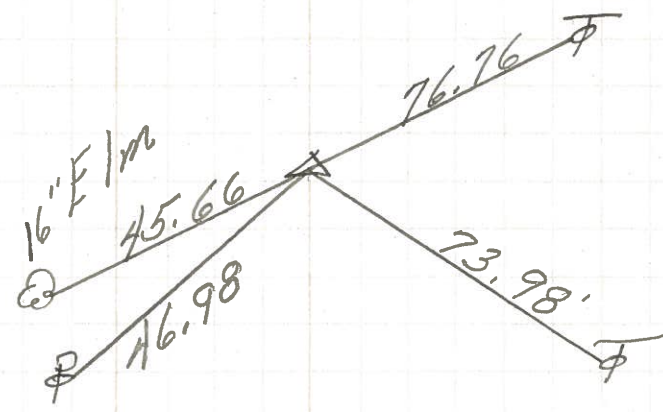
| PERSONNEL | TITLE | PERSONNEL | TITLE |
|-----------|-------|-----------|-------|
| | | | |
| | | | |
| | | | |

COUNTY Ottawa DATE 6-4-71
 S. R. 53 WEATHER Hot
 SEC. S.R. 163 North TEMP. 80°

| DESCRIPTION | LEFT | CENTER LINE | RIGHT | JOB NO. |
|-------------|------|-------------|-------|---------|
| | | | | |

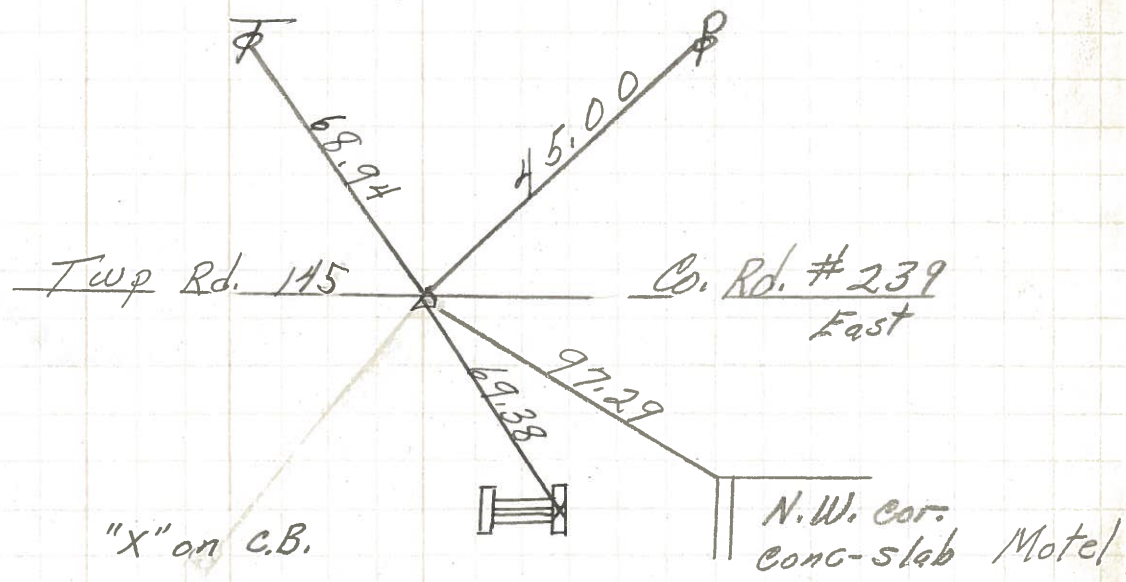
831+21.35
R.R. spk

67



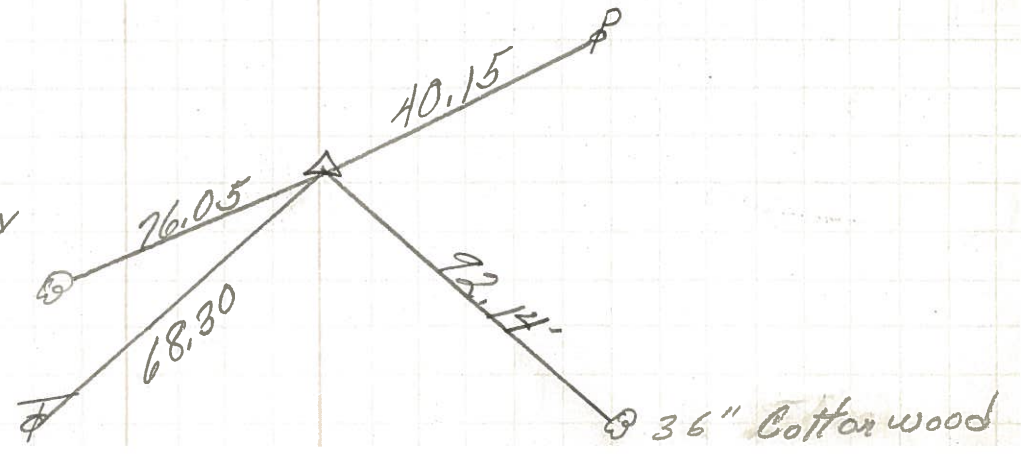
806+09.85
R.R. spk

66

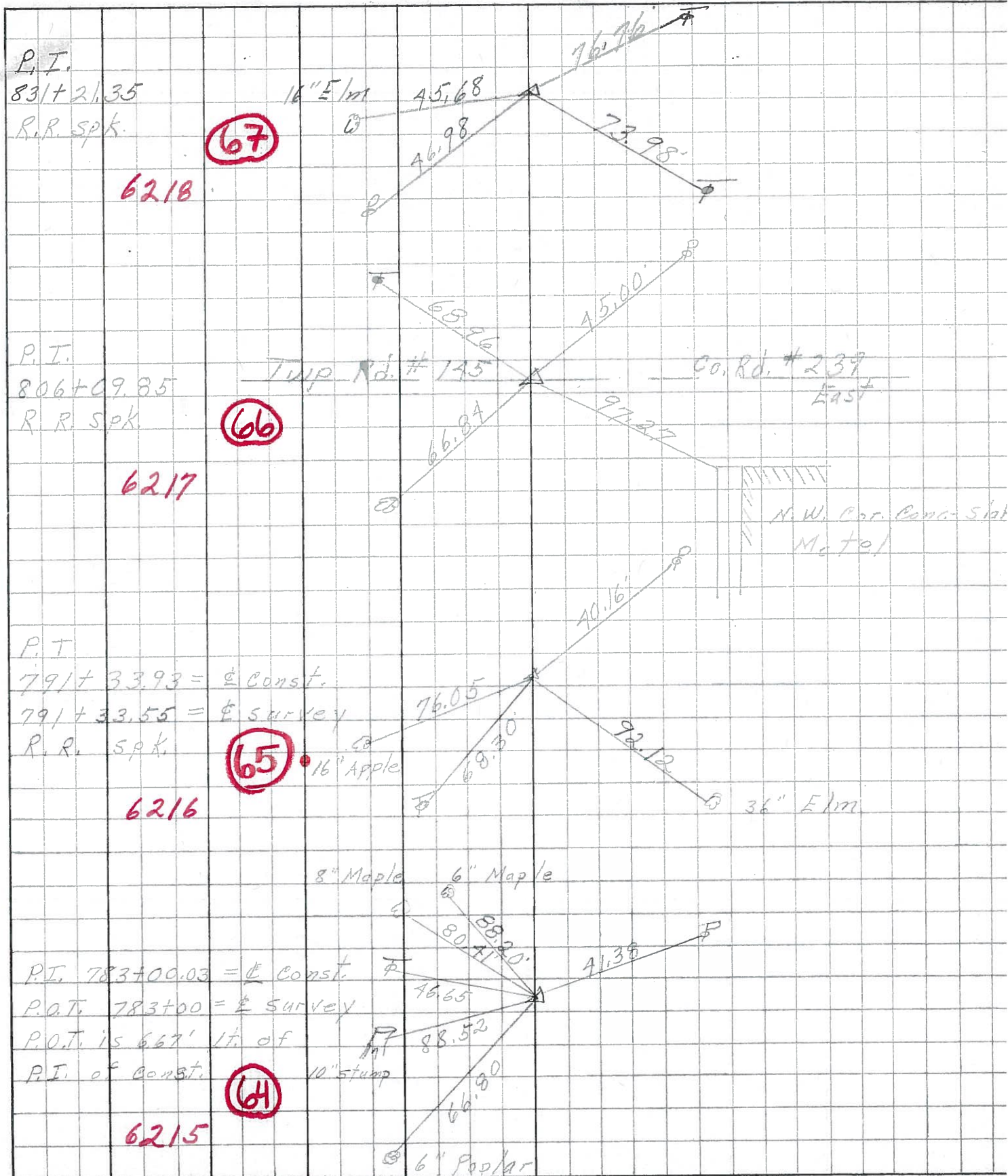


791+33.93 = const. $\frac{1}{2}$
P.I. 791+33.55 $\frac{1}{2}$ SURVEY
R. R. SPK.

65



| | | | | | | | | |
|-------------|-------------------------|-----------|-------|-------------|-----------|---------|---------|--|
| PERSONNEL | TITLE | PERSONNEL | TITLE | COUNTY | Ottawa | DATE | 8-2-68 | |
| Schneider | | Potts | | S. R. | 53 | WEATHER | Fair | |
| Mosser | | | | SEC. S.R. # | 163 North | TEMP. | 80° | |
| Barbour | | | | | | | | |
| Redding | | | | | | | | |
| DESCRIPTION | Ties for Control Points | | | | | | JOB NO. | |



P.I.
831+21.35
R.R. Spk.

6218

(67)

P.I.
806+09.85
R.R. Spk.

6217

(66)

P.I.
791+33.93 = Const.
791+33.55 = Survey
R.R. Spk.

6216

(65)

P.I. 783+00.03 = Const.
P.O.T. 783+00 = Survey
P.O.T. is 667' lt. of
P.I. of Const.

6215

(64)

N.W. Cor. Cont. - Slat
Metal

LEFT CENTER LINE RIGHT

| PERSONNEL | TITLE | PERSONNEL | TITLE |
|-----------|-------|-----------|-------|
| SWORDEN | | | |
| Holcomb | | | |
| SAGE | | | |
| AULT | | | |

COUNTY OTTAWA

DATE _____

S. R. # 53

WEATHER _____

SEC. _____

TEMP. _____

DESCRIPTION PH TIES

JOB NO. _____

