

O.D.O.T. DISTRICT 2 SURVEY OFFICE (USE ONLY)

PERSONNEL

REFERENCE NO. 74

SHEET 33 OF 34

NOTES AUBLE DATE 8/26/22  
 H.C. NIESE WEATHER CLOUDY  
 R.C. RHOADES TEMP. 72°

ROUTE SR 53  
 COUNTY OTTAWA  
 TOWNSHIP CATAWBA  
 SECTION 4-26

DWG BY RHOADES PID 102905

CONNECTICUT WESTERN RESERVE

TYPE MONUMENT MONBOX W/1" IPIN

ON SURFACE - ~~BELOW~~ ON

OFFSET Q PAVEMENT 15' ~~RT~~ : RT

2.6' RT TO RT EDGE PAVEMENT

STATION: 942+45.83

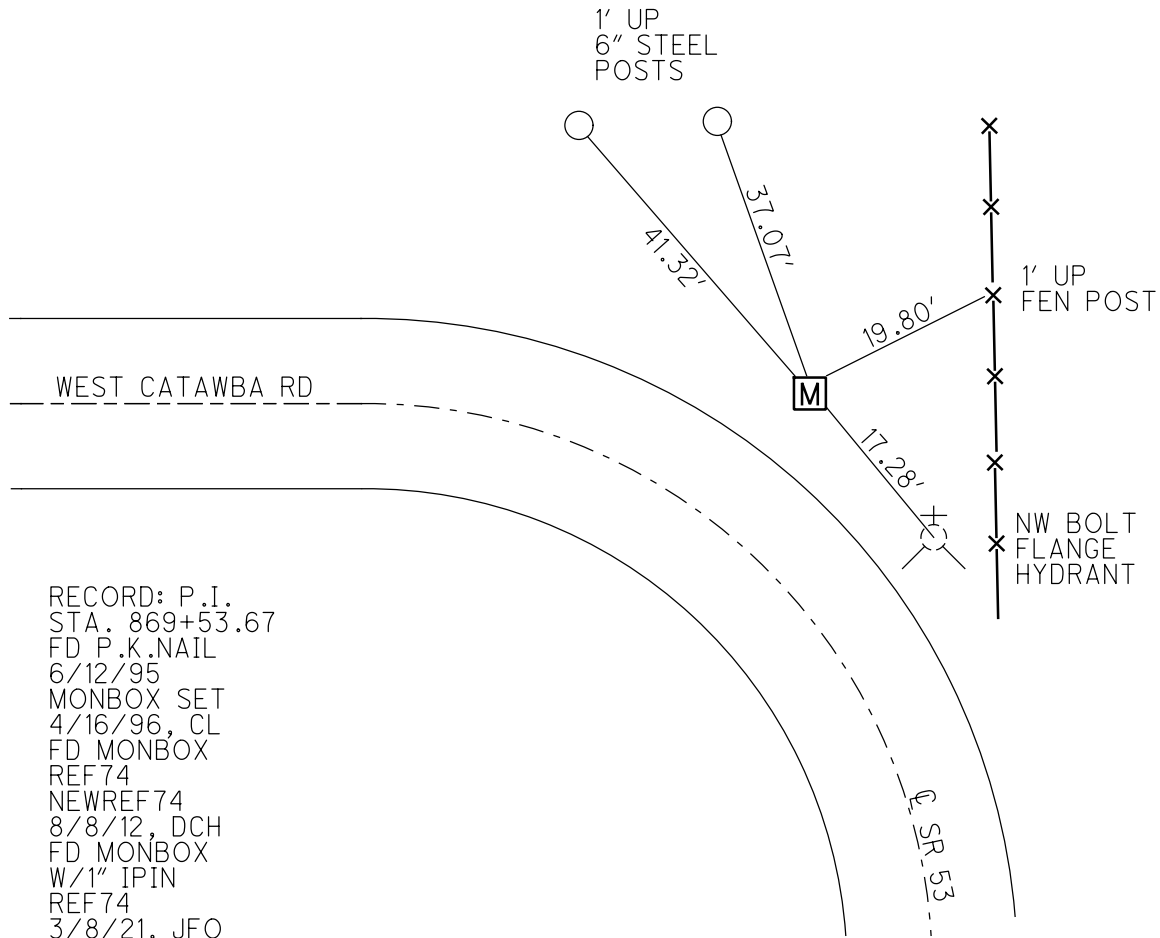
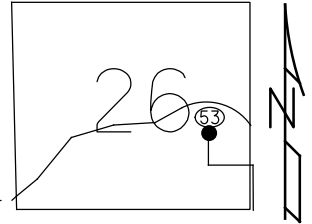
HORIZ.DATUM: NAD83 2011

GEOID: NAVD88 2018

GRID: NORTHING: 699682.147

EASTING: 1876404.986

NOTE:  
 THIS MAP IS FOR ODOT PURPOSES ONLY.  
 TO INDEX REFERENCE TIES, AND DOES NOT  
 REPRESENT TRUE LAND SUBDIVISION.



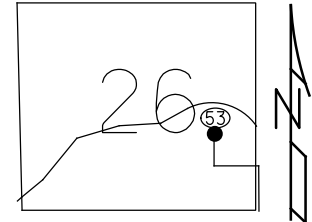
RECORD: P.I.  
 STA. 869+53.67  
 FD P.K.NAIL  
 6/12/95  
 MONBOX SET  
 4/16/96, CL  
 FD MONBOX  
 REF74  
 NEWREF74  
 8/8/12, DCH  
 FD MONBOX  
 W/1" IPIN  
 REF74  
 3/8/21, JFO

O.D.O.T. DISTRICT 2 SURVEY OFFICE (USE ONLY)

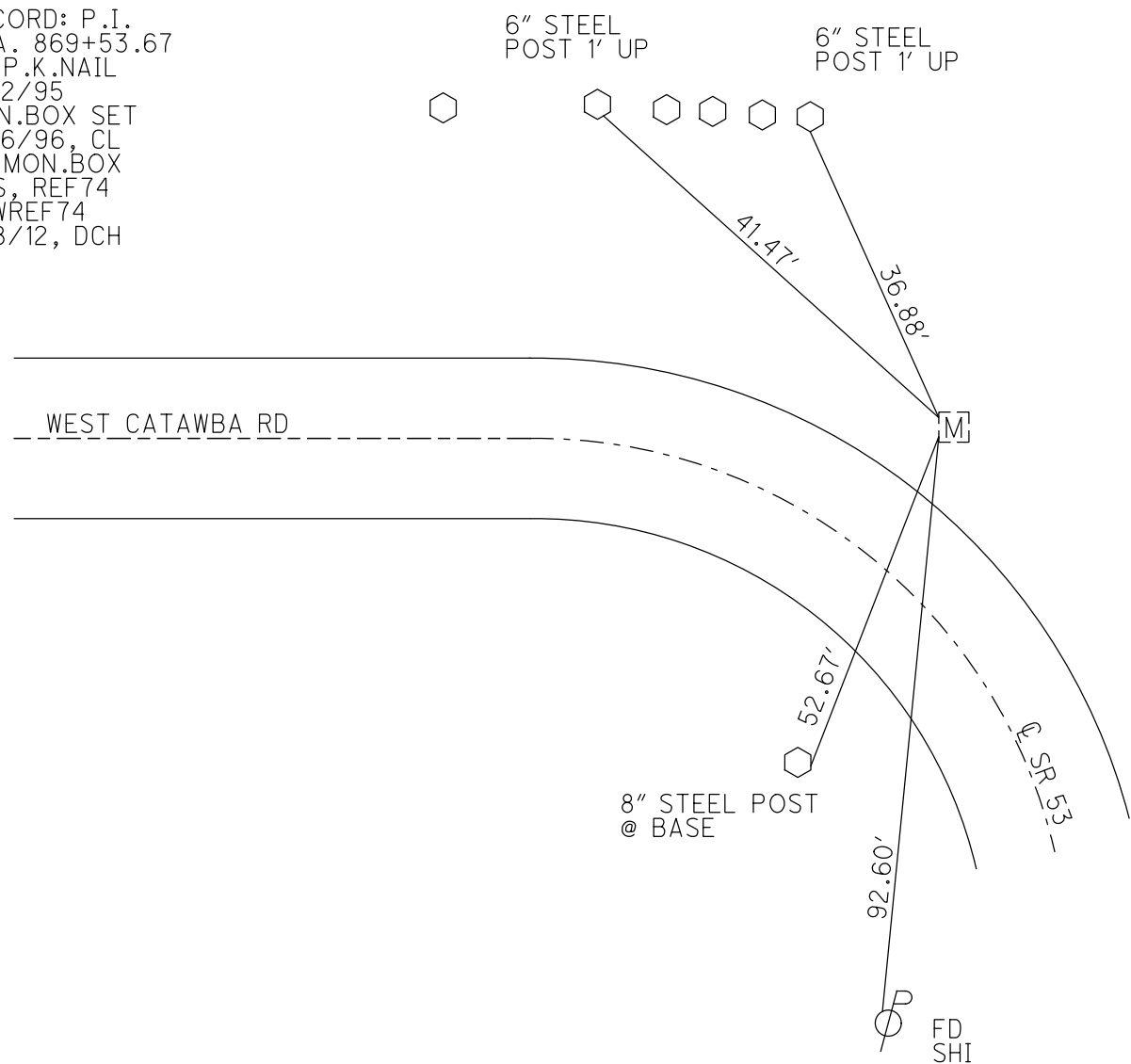
PERSONNEL \_\_\_\_\_ REFERENCE NO. 74 SHEET 36 OF 36  
 NOTES HOMAN DATE 9/6/11 ROUTE SR 53  
 H.C. ROUSOS WEATHER CLOUDY COUNTY OTTAWA  
 R.C. HOMAN TEMP. 65° TOWNSHIP CATAWBA ISL  
 \_\_\_\_\_ SECTION 4-26  
 \_\_\_\_\_

TYPE MONUMENT P.K.NAIL  
 ON SURFACE - ~~BELOW~~ ON  
~~LEFT~~ - Q PAV'T - RIGHT 15'  
2.6' RT TO RT EDGE PAVEMENT  
 S.L.M. 942+65 ±  
 GRID: NORTHING: 699682.317 EASTING: 1876404.789

NOTE:  
THIS MAP IS FOR ODOT PURPOSES ONLY  
TO INDEX REFERENCE TIES, AND DOES NOT  
REPRESENT TRUE LAND SUBDIVISION.



RECORD: P.I.  
 STA. 869+53.67  
 FD P.K.NAIL  
 6/12/95  
 MON.BOX SET  
 4/16/96, CL  
 FD MON.BOX  
 GPS, REF74  
 NEWREF74  
 8/8/12, DCH

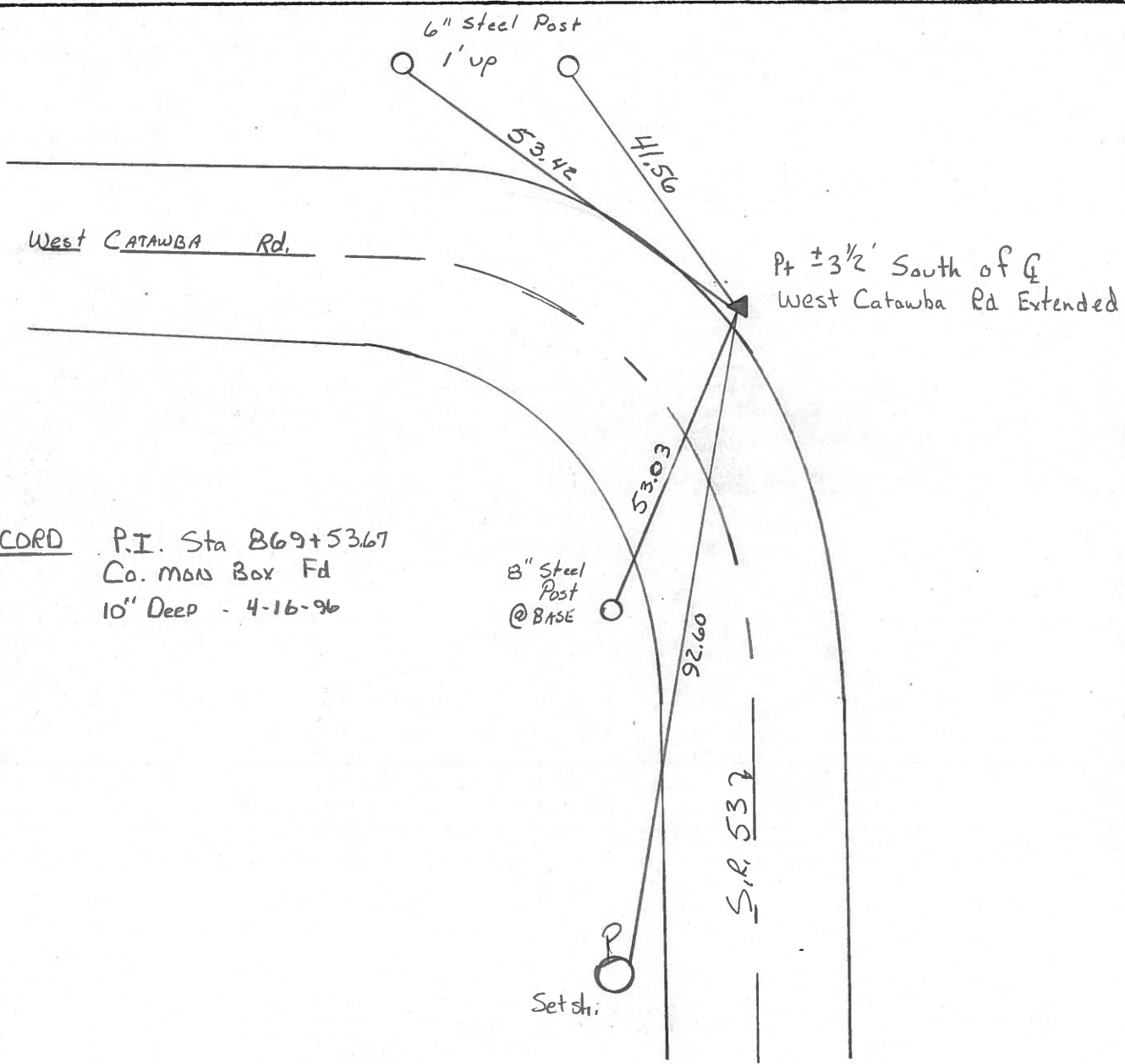
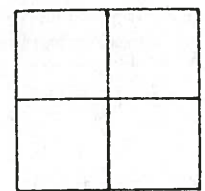


# O.D.O.T. DISTRICT 2 SURVEY OFFICE

**PERSONNEL** \_\_\_\_\_ **REFERENCE NO.** 74 **SHEET** 30 **OF** 30  
**NOTES** VAN DUSEN  
**H.C.** Rousos **DATE** 6-12-95 **ROUTE** S.R. 53  
**R.C.** Huss **WEATHER** FAIR **COUNTY** OTTAWA  
**TEMP.** +74 **TOWNSHIP** CATAWBA  
**SECTION** \_\_\_\_\_  
**T** \_\_\_\_\_ **R** \_\_\_\_\_

**TYPE MONUMENT** P.K. NAIL  
**ON SURFACE - BELOW** Yes  
**LEFT - C PAV'T. - RIGHT** 23.4 Rt  
2.6 ~~to~~ <sup>Rt</sup> ~~of~~ <sup>Rt</sup> **EDGE PAVEMENT**  
**S.L.M.** 942 +77

Fd Mon Box  
 10" Down  
 4-16-96  
 C.L.

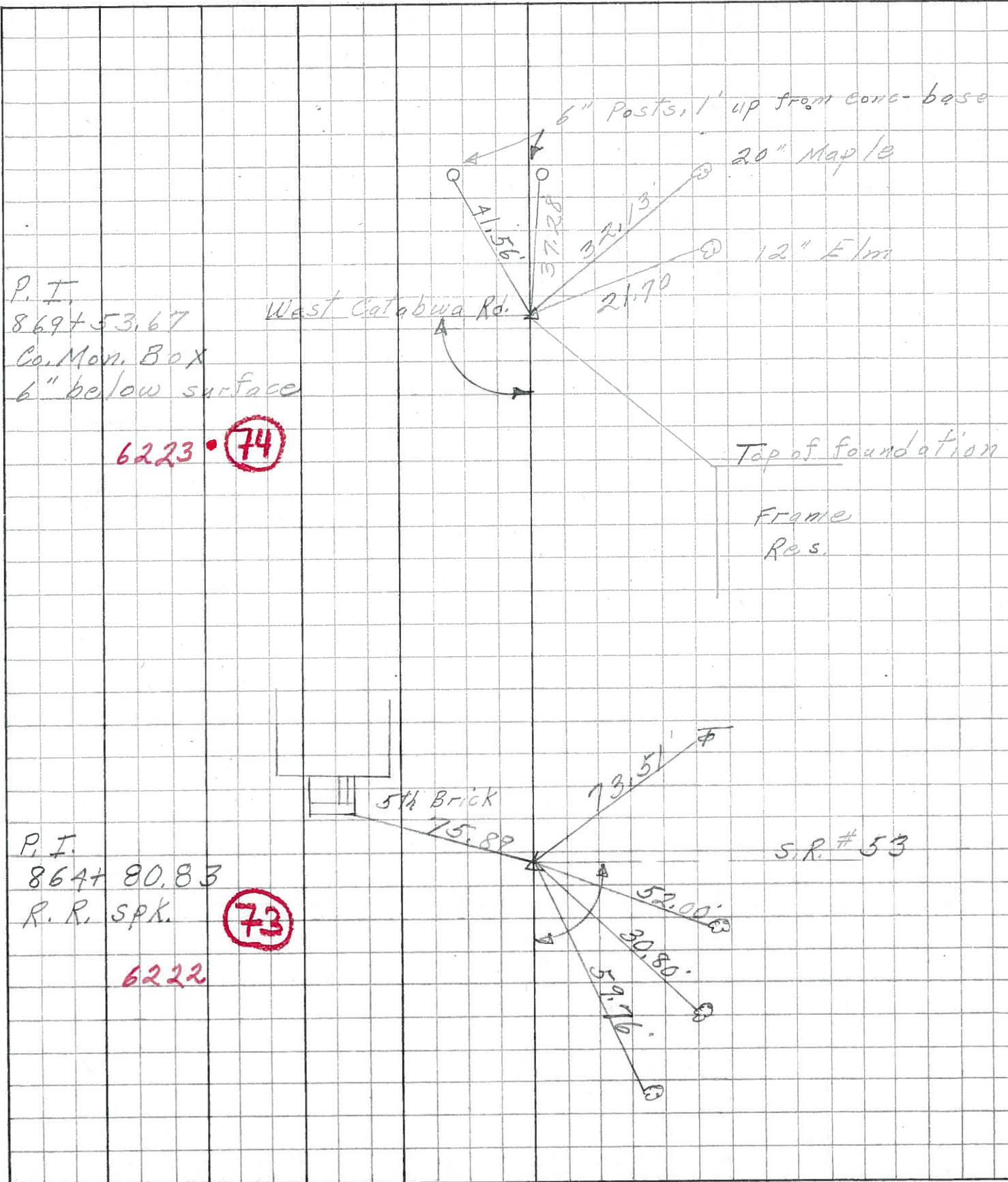


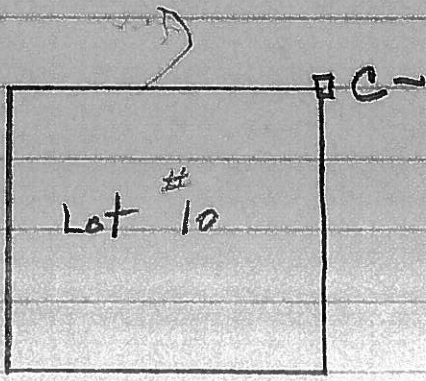
RECORD P.I. Sta 869+53.67  
 Co. Mon Box Fd  
 10" Deep - 4-16-96



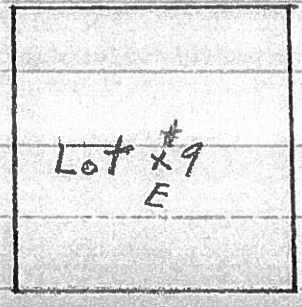
PERSONNEL	TITLE	PERSONNEL	TITLE	COUNTY	DATE	S. R.	WEATHER	SEC.	TEMP.
Schneider		Potts		O Hawa	8-17-68	53	Hot	S.R. #16.3 North	90°
Mossar									
Barbour									
Redding									

DESCRIPTION: Ties for Control Points





Nail in P.P.N.E. 20.83'  
 Nail " T.P.S.W. 38.95'  
 Cherry S.E. 34'  
 Cedar N.W. 47.1'



2 Nails in Oak S.W. 34.15'  
 " Nails in P.P.N.W. 32.60'  
 " " " T.P.N.E. 65.0'  
 Found Iron bolt.

OTT-SR 53

(74)

Pil. at N. End  
of SR# 53

