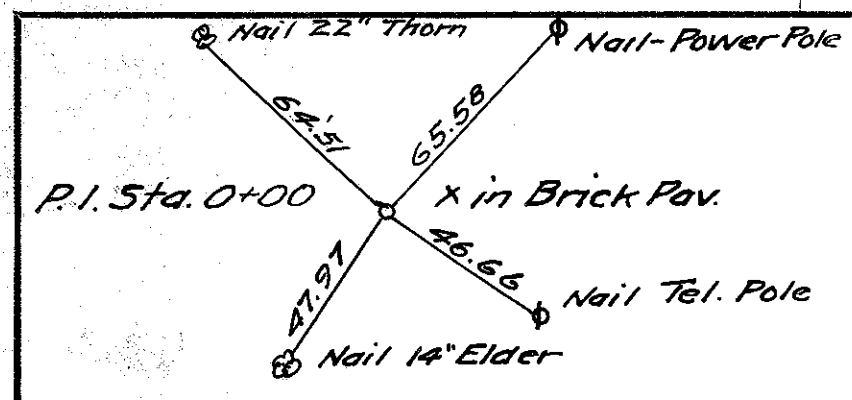
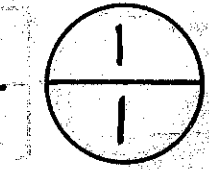


Ott. 105 10.55

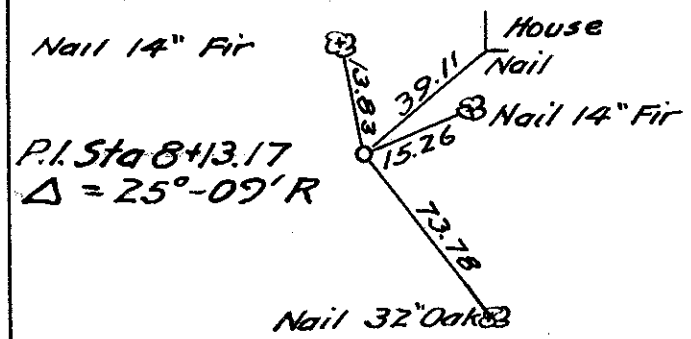
OTTAWA COUNTY
 S.H. 279 - SEC. F1, BRIDGE
 R/W PLAN

DATE APRIL 19, 1937 DRAWN BY A.P.
 REVISED
 LENGTH OF PROJECT 0.017 MI.



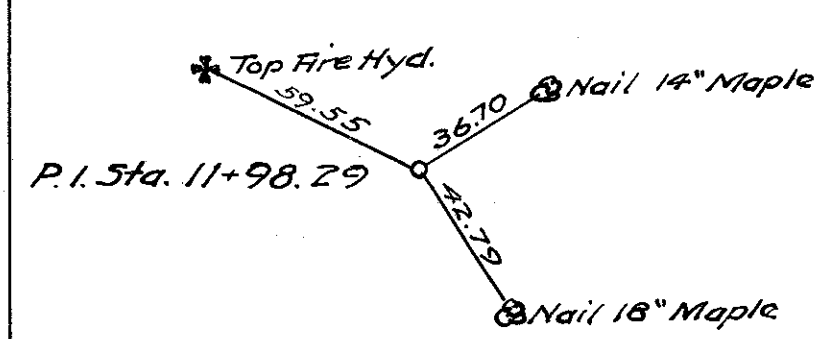
P.I. Sta. 5+74
 $\Delta = 3^\circ 25' R.$

CURVE DATA
 $\Delta = 21^\circ 44'$
 $D = 10^\circ 00'$
 $R = 572.96$
 $T = 109.98$
 $L = 217.32$



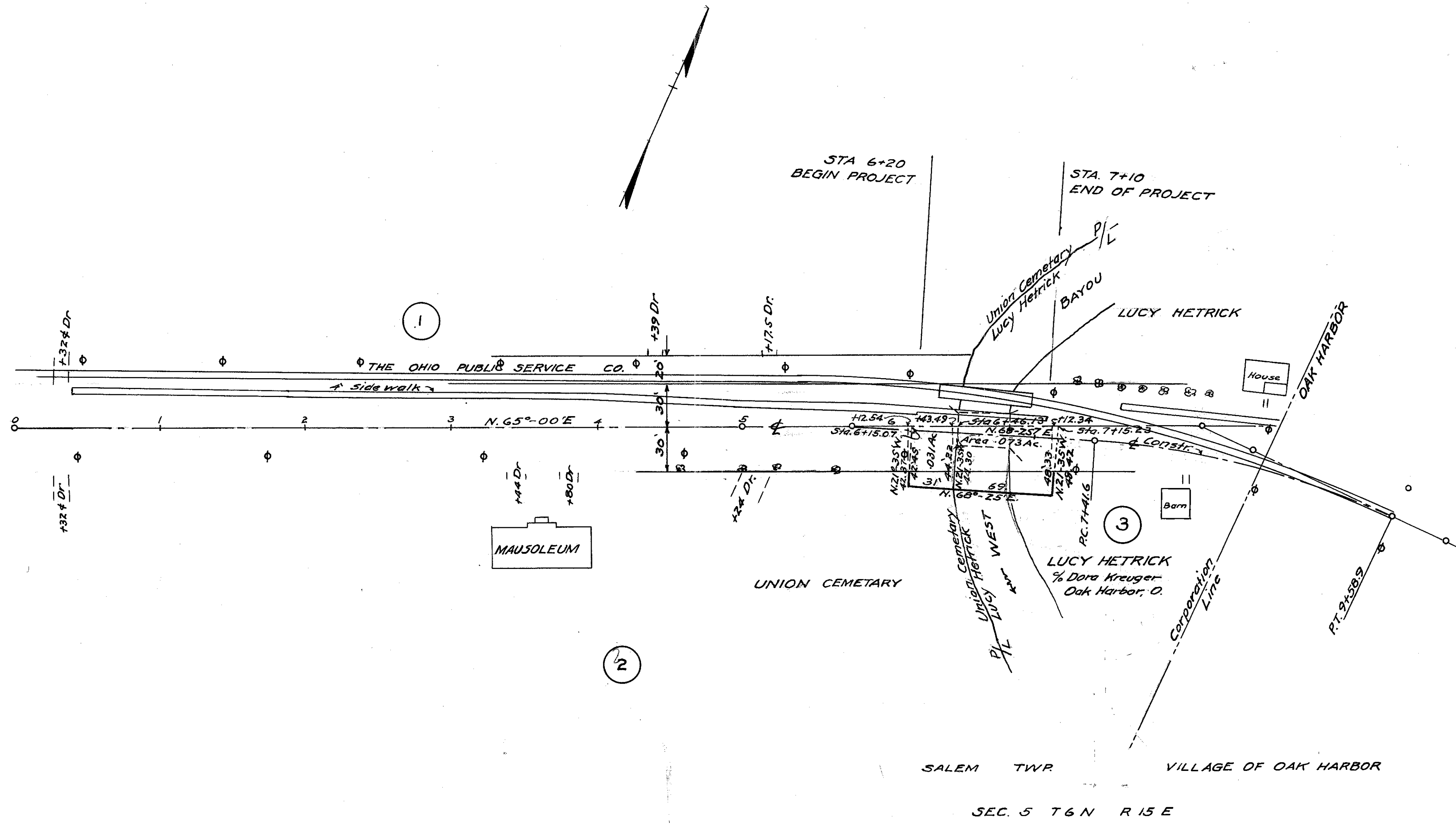
P.I. Sta. 6+13.17
 $\Delta = 25^\circ 09' R.$

P.I. Sta. 8+51.6
 $\Delta = 21^\circ 44' R.$
 $D = 10^\circ 0'$
 $R = 572.96$
 $T = 109.98$
 $L = 217.32$



P.I. Sta. 11+98.29

*Reassessment of line
 R/W OK as shown
 J.P.
 3/10/44*



Scanned July 1997

24887.3 sec 279A.C. 1

R 4105 # 5 E-7