

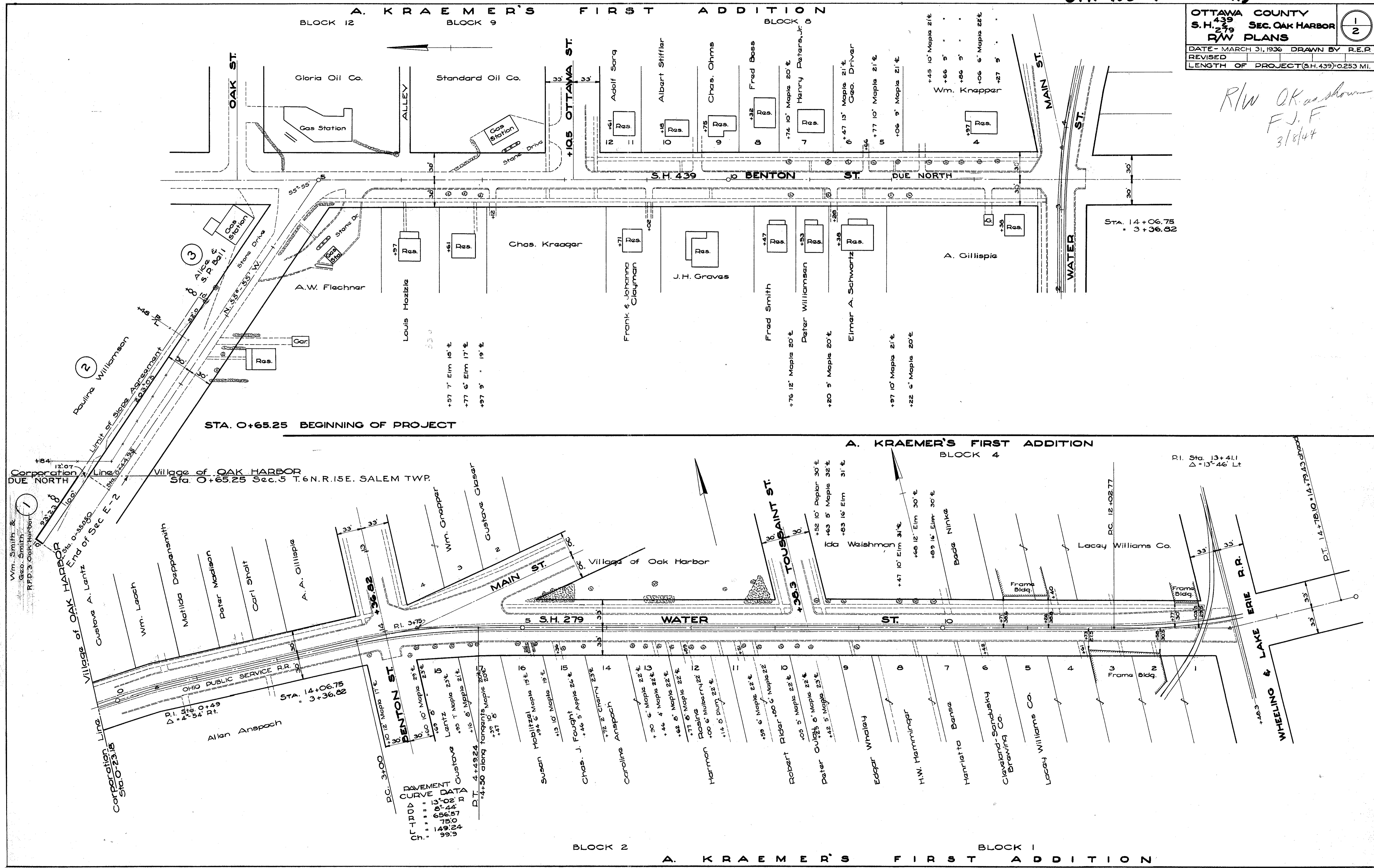
Scanned July 1997

Ott. 105 (10.60 - 10.11)

A. KRAEMER'S FIRST ADDITION

OTTAWA COUNTY
 S.H. 439 SEC. OAK HARBOR
 R/W PLANS
 DATE - MARCH 31, 1936 DRAWN BY R.E.P.
 REVISED
 LENGTH OF PROJECT (S.H. 439) 0.253 MI.

R/W OK as shown
F.J.F
3/8/44



3

2

1

R-4105 #1 E-17

E-17

Examined July 1947

OTT. 105 (10.60 - 10.11)

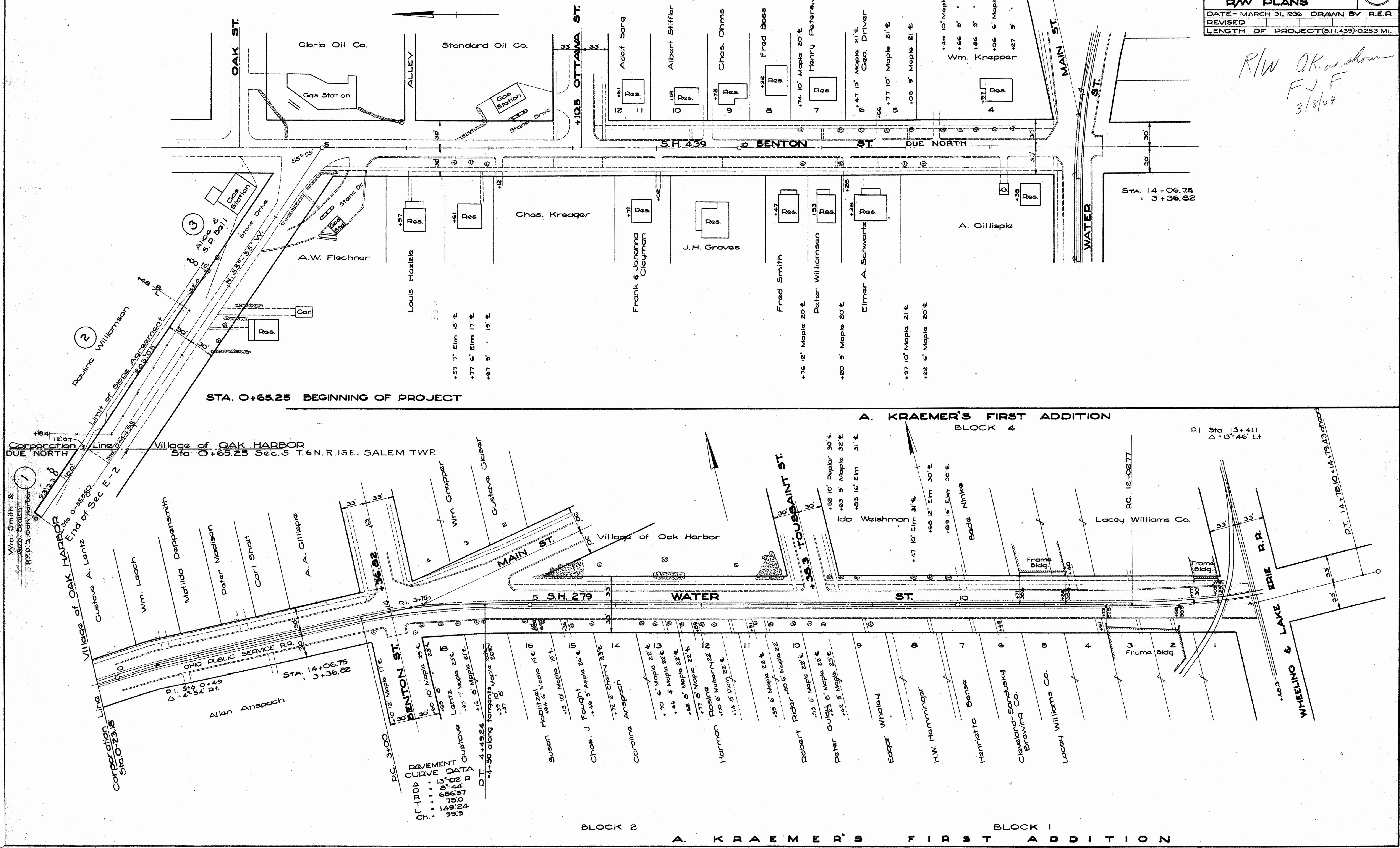
A. KRAEMER'S FIRST ADDITION

OTTAWA COUNTY
 S.H. 439 SEC. OAK HARBOR
R/W PLANS

DATE - MARCH 31, 1936 DRAWN BY R.E.R.
 REVISIONS
 LENGTH OF PROJECT (S.H. 439) - 0.253 MI.

1
2

R/W OK as shown
F.J.F.
3/8/44



STA. 0+65.25 BEGINNING OF PROJECT

Village of OAK HARBOR
Sta. 0+65.25 Sec. 5 T.6 N.R.15E. SALEM TWP.

A. KRAEMER'S FIRST ADDITION
BLOCK 4

P.I. Sta. 13+41.1
Δ = 13° 46' Lt

BLOCK 2

BLOCK 1

A. KRAEMER'S FIRST ADDITION

R-4105 4 E-7

FOR ANY QUESTIONS-PLEASE CONTACT ODOT DISTRICT 2 REAL ESTATE AT 419-353-8131

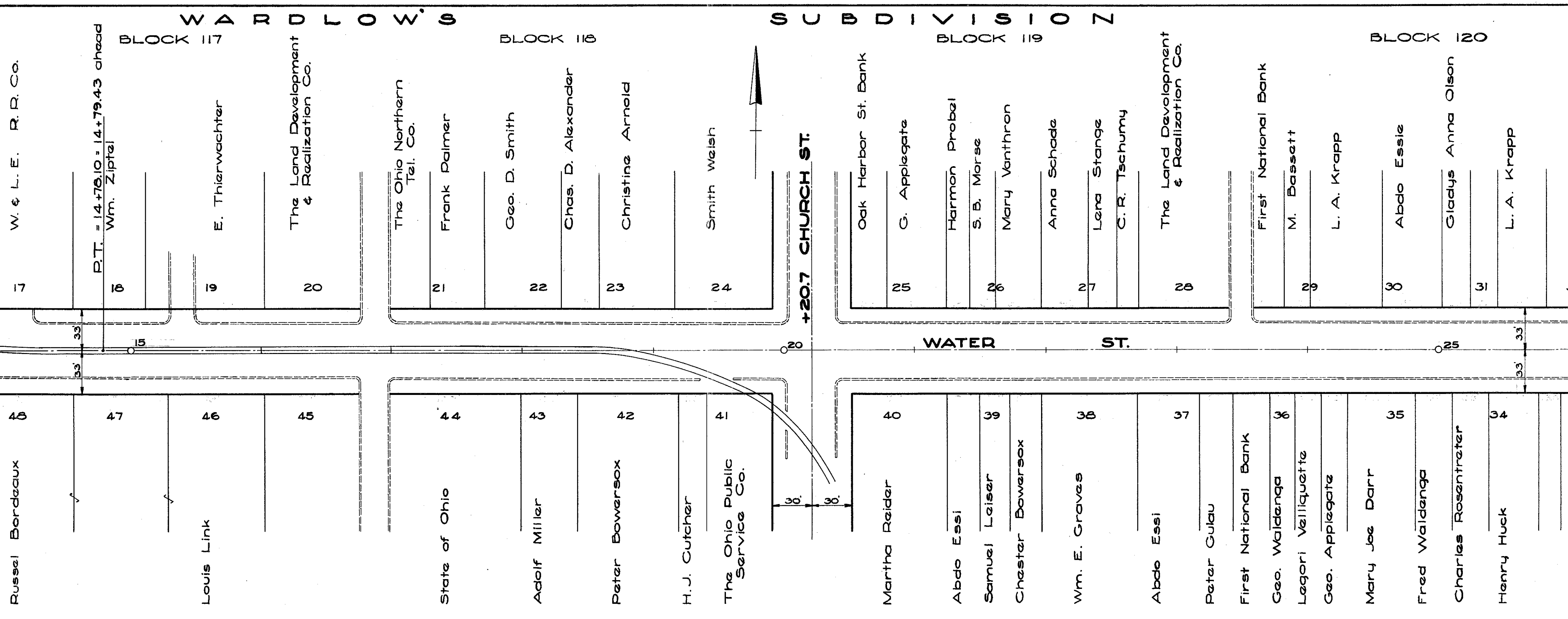
Scanned July 1977

OT-TRD
CUMULATIVE
P.L. 13.44
275.99
99.97

P.C. 12+02.77

LAKEURIE R.R.

WHEELING &



BLOCK 129

BLOCK 117

BLOCK 130

BLOCK 118

BLOCK 131

BLOCK 119

BLOCK 132

BLOCK 120

STA. 27+20 END OF PROJECT

OTTAWA COUNTY
S.H. 279 SEC. OAK HARBOR
RAW PLANS

DATE - MAR 31, 1936 DRAWN BY R.E.R.
REVISIONS
LENGTH OF PROJECT = 0.457 MI. (S.H. 279)

2
2