

O.D.O.T. DISTRICT 2 SURVEY OFFICE (USE ONLY)

PERSONNEL

REFERENCE NO. 1

SHEET 1 OF 33

NOTES RHOADES

DATE 7/20/21

ROUTE SR 105

H.C. O'DONNELL

WEATHER HAZE

COUNTY OTTAWA

R.C. RHOADES

TEMP. 71°

TOWNSHIP HARRIS

SECTION 23

DWG BY RHOADES PID CHIP SEAL

T 6 N R 13 E

TYPE MONUMENT MAG/WASHER

ON SURFACE - ~~BELOW~~ ON

OFFSET ☑ PAVEMENT ON LT : RT

10.3' TO RT EDGE PAVEMENT

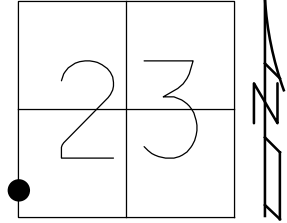
STATION: 0+00

HORIZ. DATUM: NAD83 2011

GEOID: NAVD88 2018

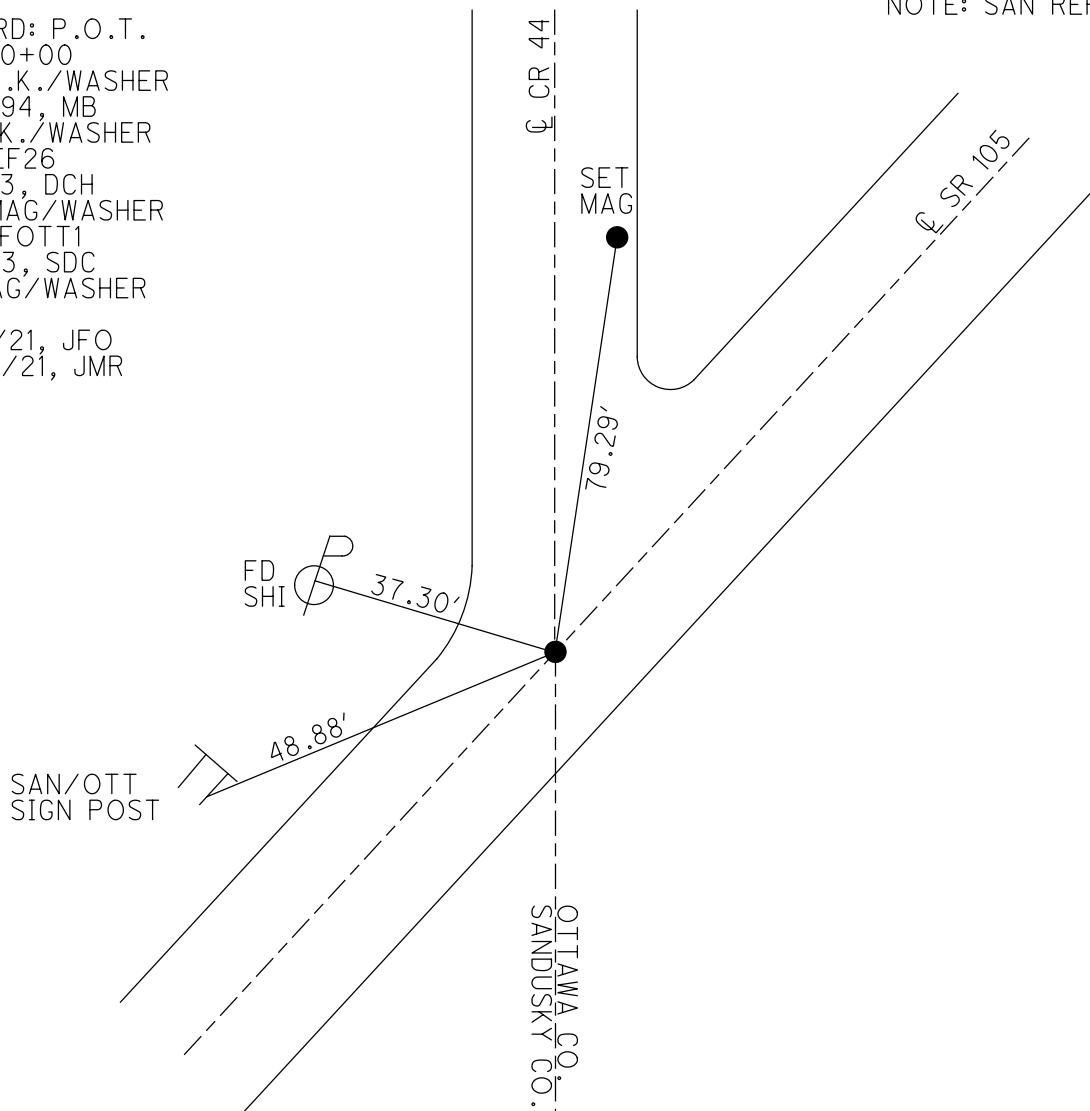
GRID: NORTHING: 654700.671

EASTING: 1738751.041



NOTE: SAN REF 26

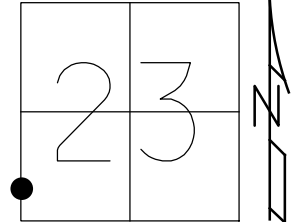
RECORD: P.O.T.
 STA. 0+00
 SET P.K./WASHER
 9/14/94, MB
 FD P.K./WASHER
 SANREF26
 5/2/13, DCH
 SET MAG/WASHER
 FINREFOTT1
 7/11/13, SDC
 FD MAG/WASHER
 REF1
 7/20/21, JFO
 10/20/21, JMR



O.D.O.T. DISTRICT 2 SURVEY OFFICE (USE ONLY)

PERSONNEL _____ REFERENCE NO. 1 SHEET 1 OF 33
 NOTES HOMAN DATE 5/2/13 ROUTE SR 105
 H.C. HOMAN WEATHER CLEAR COUNTY OTTAWA
 R.C. ROUSOS TEMP. 60° TOWNSHIP HARRIS
 _____ SECTION 23
 _____ T 6 N R 13 E

TYPE MONUMENT P.K./WASHER
 ON SURFACE - ~~BELOW~~ ON
 LEFT - CL PAV'T - RIGHT ON
10.3' TO RT EDGE PAVEMENT
 S.L.M. 0+00



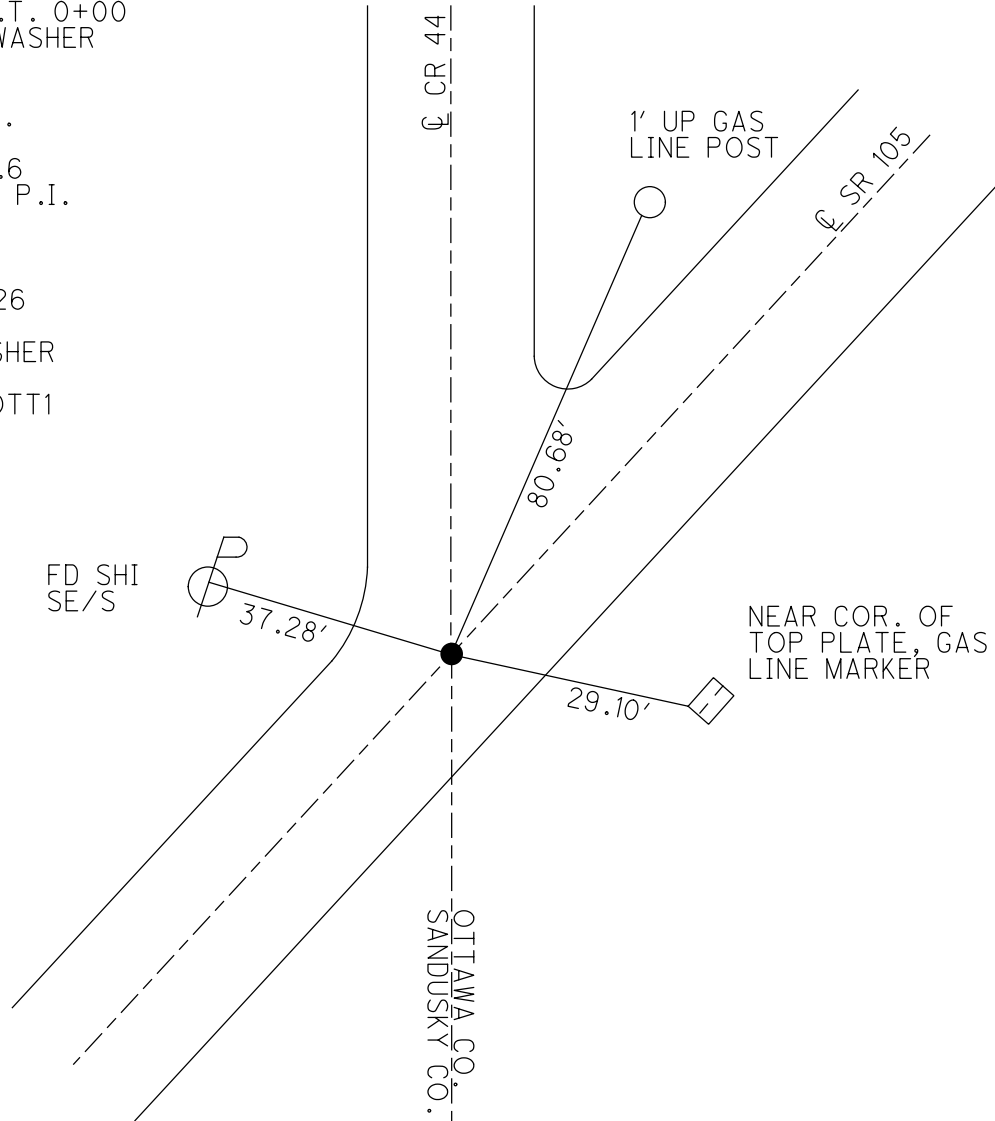
GRID: NORTHING: 654700.739 EASTING: 1738750.927

RECORD: P.O.T. 0+00
 RESET P.K./WASHER
 9/14/94, MB

SANDUSKY CO.
 REF 26
 STA. 267+69.6
 RECORD 1985: P.I.
 STA. 267+71

FD P.K.
 GPS, SANREF26

SET MAG/WASHER
 6/12/13, SDC
 GPS, FINREFOTT1
 7/11/13, SDC



O.D.O.T. DISTRICT 2 SURVEY OFFICE

PERSONNEL _____

REFERENCE NO. 1

SHEET 1 OF 26

NOTES BARNHISE 1

H.C. PRUNTY

DATE 9-14-94

ROUTE 105

R.C. SLOVAK

WEATHER CLEAR

COUNTY OTTAWA

TEMP. +85°

TOWNSHIP HARRIS

SECTION 23

T6 N R 13 E

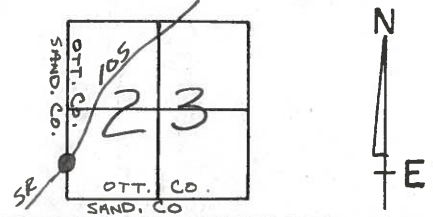
TYPE MONUMENT PK/Washer

~~ON SURFACE~~ - BELOW 1/2

~~10.3 TO RT EDGE PAV'T.~~ - ~~RIGHT~~ yes

10.3 TO RT EDGE PAVEMENT

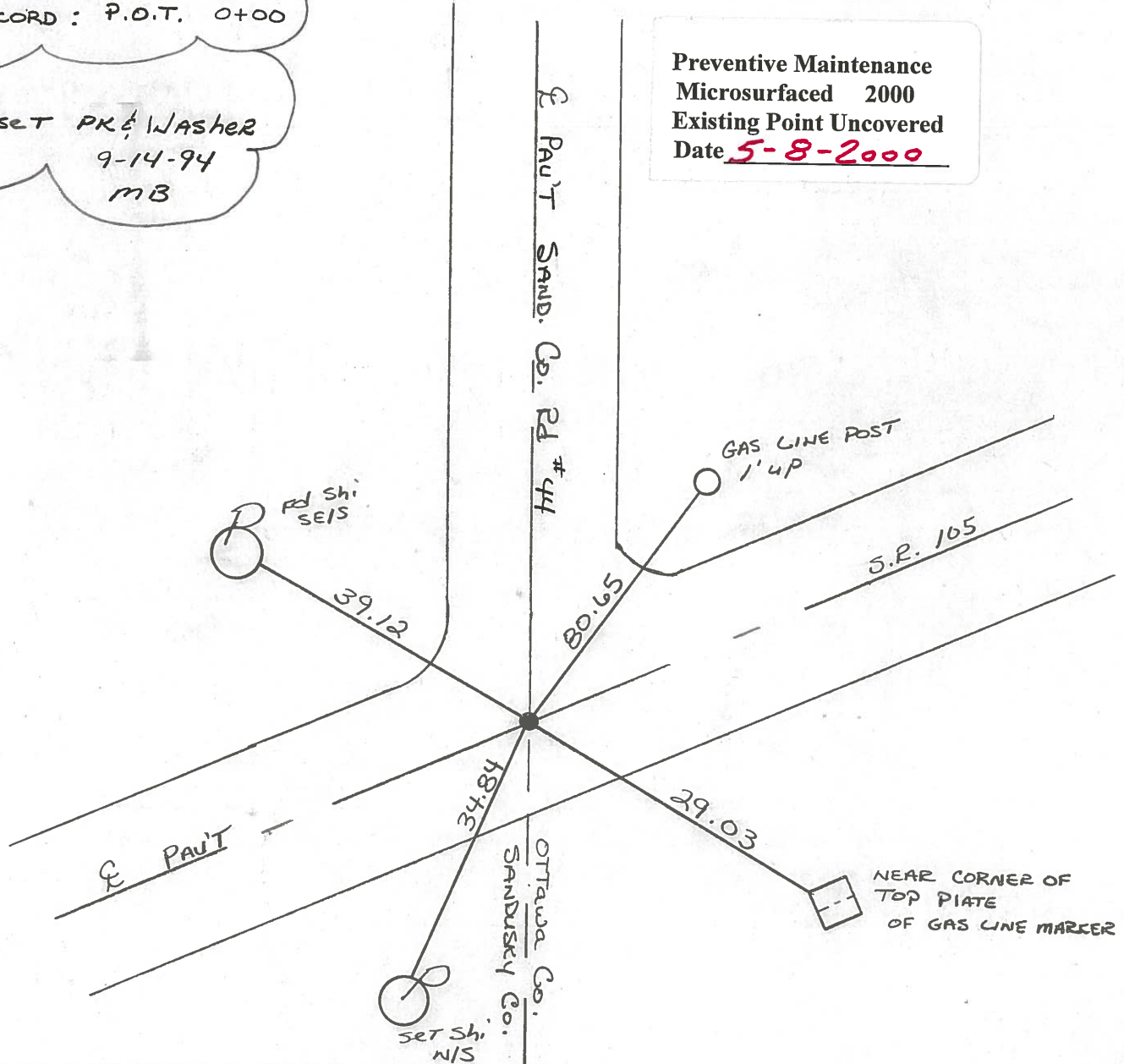
S.L.M. 0+00



Record : P.O.T. 0+00

Reset PK & Washer
 9-14-94
 MB

Preventive Maintenance
 Microsurfaced 2000
 Existing Point Uncovered
 Date 5-8-2000



PERSONNEL TITLE PERSONNEL TITLE

Schneider Ash
 Mosser Cronin
 Ripple
 Geyman

COUNTY Ottawa

DATE 8-2-74

S. R. 105

WEATHER Sunny

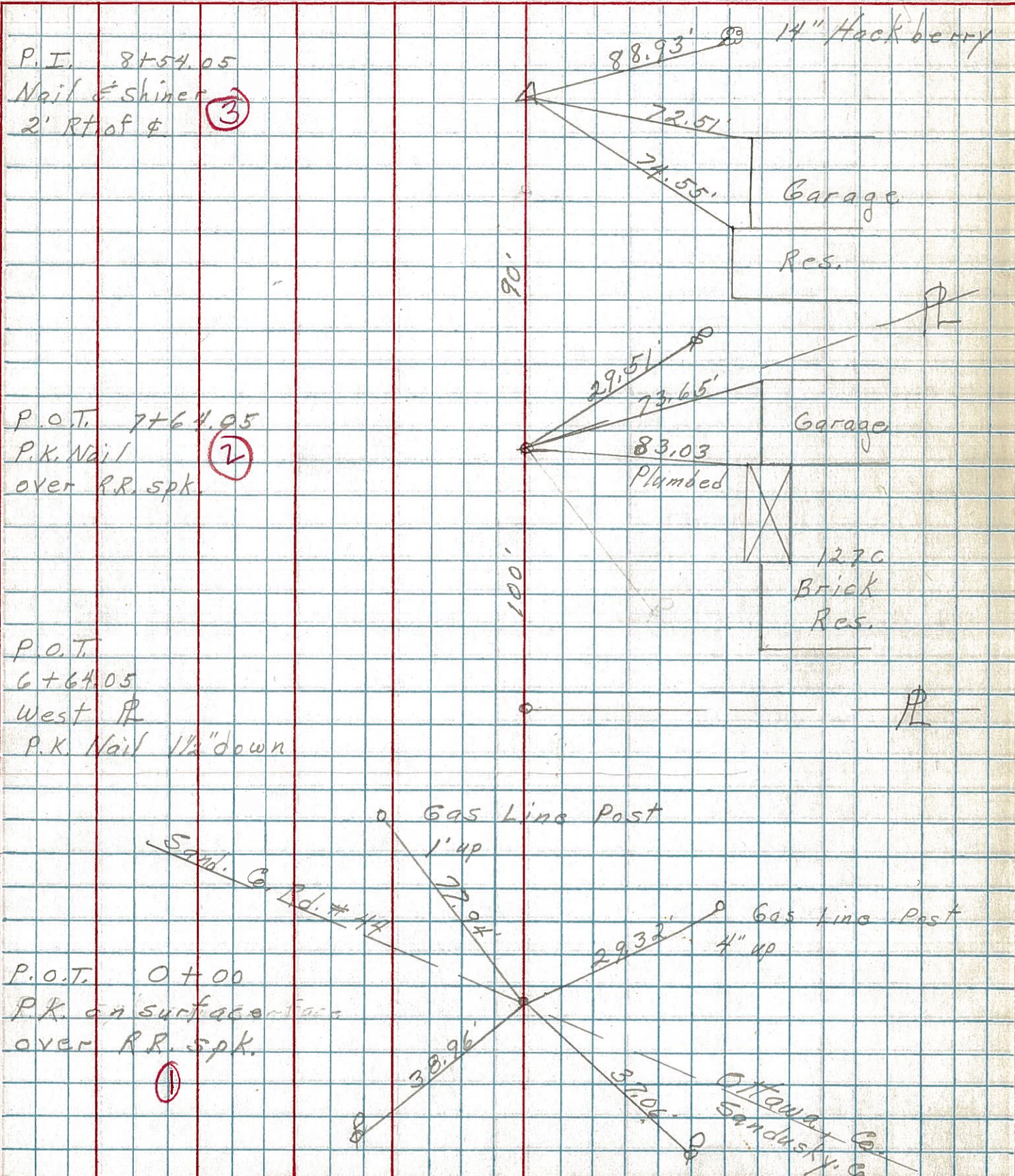
SEC. 23

TEMP. 80°

DESCRIPTION Harris Twp.

LEFT CENTER LINE RIGHT

JOB NO.



P.I. 8+54.05
 Nail & Shiner
 2' Rt of & (3)

P.O.T. 7+64.05
 P.K. Nail
 over R.R. spk. (2)

P.O.T. 6+64.05
 West R
 P.K. Nail 1 1/2" down

P.O.T. 0+00
 P.K. on surface
 over R.R. spk. (1)

Gas Line Post
 1' up
 Sand. G. Rd. # 44
 72.94'
 Gas Line Post
 4" up
 29.32'
 38.96'
 37.06'
 Ottawa Co.
 Sandusky Co.

PERSONNEL	TITLE	PERSONNEL	TITLE
MOSSER			
BARBOUR			
GEWMAN			
VINSON			

COUNTY OTTAWA
 S. R. 105
 SEC OTT. CO. LINE TO HARBER
 WEATHER SUNNY
 TEMP. 65°

DESCRIPTION TIES FOR CONTROL TIES JOB NO. _____

