

O.D.O.T. DISTRICT 2 SURVEY OFFICE (USE ONLY)

PERSONNEL

REFERENCE NO. 1 A

SHEET 2 OF 33

NOTES RHOADES

DATE 7/20/21

ROUTE SR 105

H.C. O'DONNELL

WEATHER HAZE

COUNTY OTTAWA

R.C. RHOADES

TEMP. 71°

TOWNSHIP HARRIS

SECTION 23

DWG BY RHOADES PID CHIP SEAL

T 6 N R 13 E

TYPE MONUMENT MAG/WASHER

ON SURFACE - ~~BELOW~~ ON

OFFSET ☉ PAVEMENT ON LT : RT

10.2' TO RT EDGE PAVEMENT

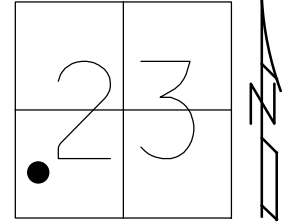
STATION: 6+64

HORIZ.DATUM: NAD83 2011

GEOID: NAVD88 2018

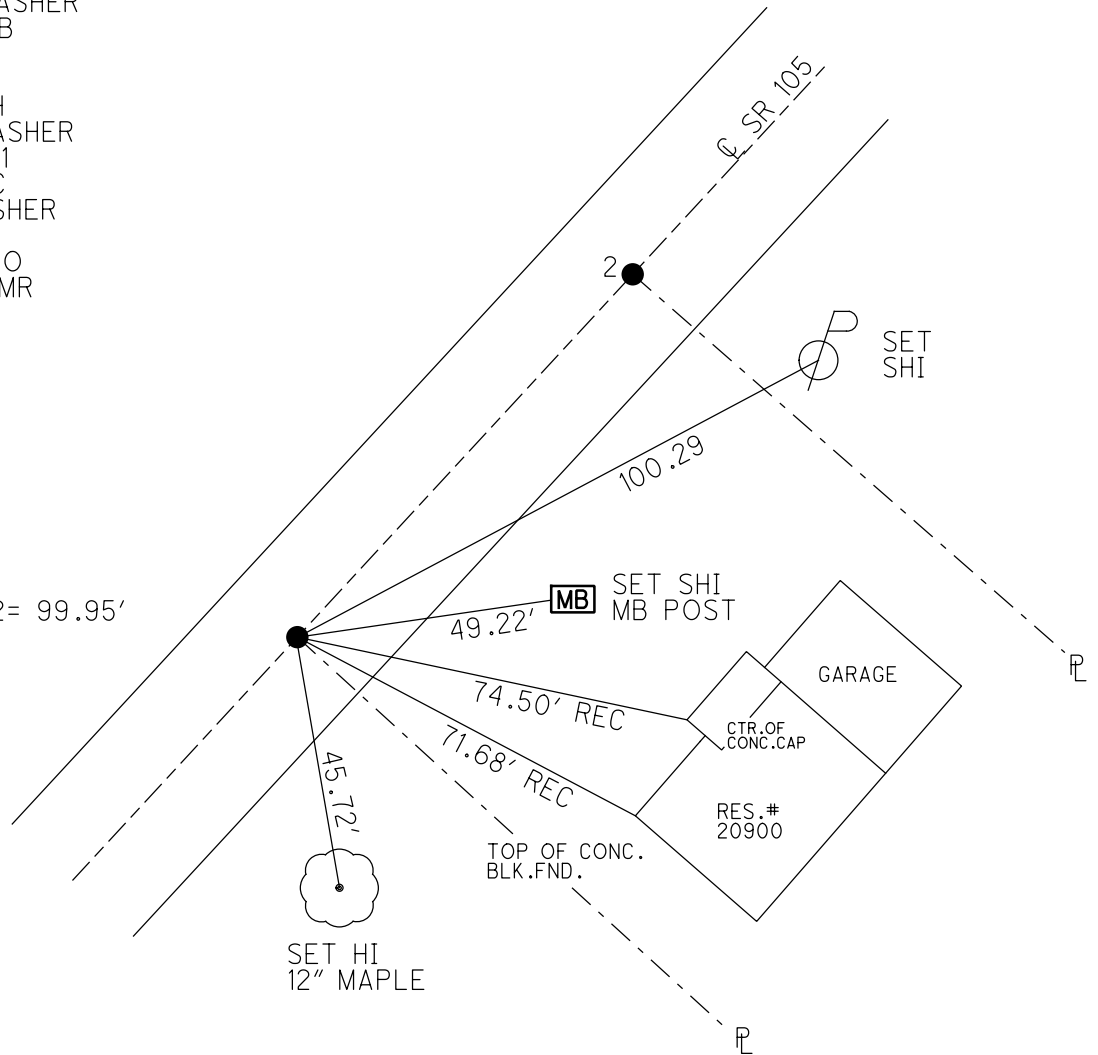
GRID: NORTHING: 655194.376

EASTING: 1739195.127



RECORD: P.O.T.
 STA. 6+64.05
 SET P.K./WASHER
 9/27/94, MB
 FD P.K.NAIL
 OTTREF2
 5/3/13, DCH
 SET MAG/WASHER
 FINREFOTTA1
 7/11/13, SDC
 FD MAG/WASHER
 REFA1
 7/20/21, JFO
 10/20/21, JMR

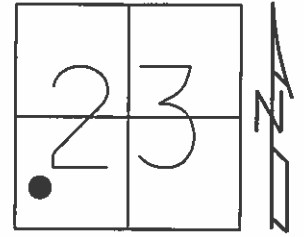
DIST. 1A-2= 99.95'



O.D.O.T. DISTRICT 2 SURVEY OFFICE (USE ONLY)

PERSONNEL	REFERENCE NO. <u>1 A</u>	SHEET <u>2</u> OF <u>33</u>
NOTES <u>HOMAN</u>	DATE <u>5/3/13</u>	ROUTE <u>SR 105</u>
H.C. <u>HOMAN</u>	WEATHER <u>CLEAR</u>	COUNTY <u>OTTAWA</u>
R.C. <u>ROUSOS</u>	TEMP. <u>60°</u>	TOWNSHIP <u>HARRIS</u>
		SECTION <u>23</u>
		T <u>6</u> N R <u>13</u> E

TYPE MONUMENT P.K.NAIL
 ON SURFACE - ~~BELOW~~ ON
 LEFT - Q PAV'T - RIGHT ON
10.2' TO RT EDGE PAVEMENT
 S.L.M. 6+64

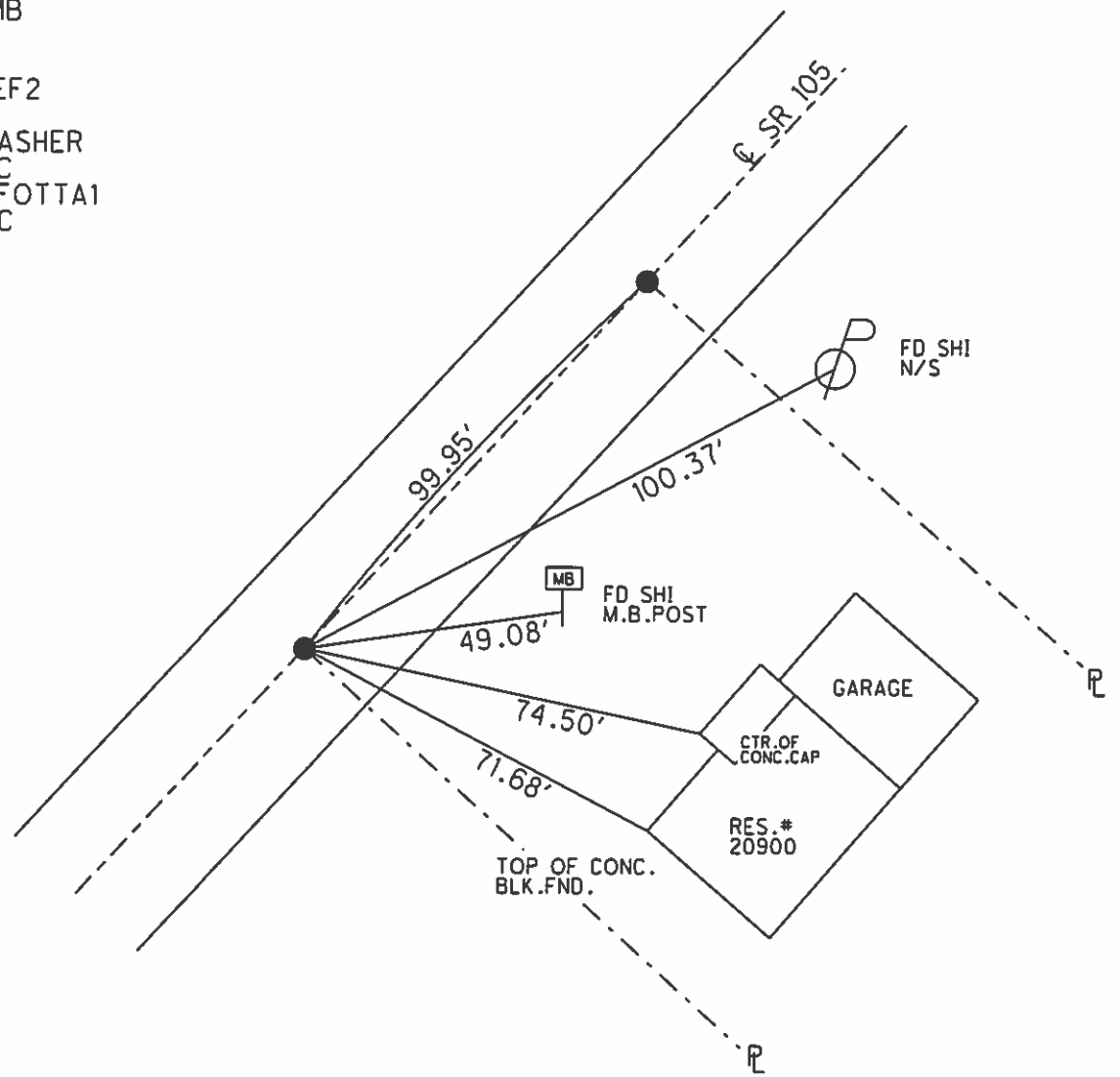


Grid: Northing: 655194.334 Easting: 1739195.033

RECORD: P.O.T.
 6+64.05
 RESET P.K./WASHER
 9/27/94, MB

FD P.K.
 GPS, OTTREF2

SET MAG/WASHER
 7/9/13, SDC
 GPS, FINREFOTTA1
 7/11/13, SDC



O.D.O.T. DISTRICT 2 SURVEY OFFICE

PERSONNEL _____

REFERENCE NO. 1-A & 2

SHEET 2 OF 26

NOTES Barnhiser

H.C. Prunty

DATE 9-14-94

ROUTE 105

R.C. Slouak

WEATHER CLEAR

COUNTY OTTAWA

TEMP. +85°

TOWNSHIP HARRIS

SECTION 23

T6 N R 13 E

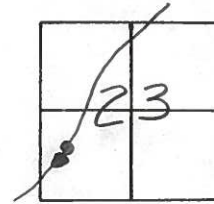
TYPE MONUMENT "1-A" "2" PK NAIL (BOTH)

~~ON SURFACE~~ - BELOW 4" 1/2"

~~LEFT - E. PAV'T. - RIGHT~~ yes yes

10.2 TO RT EDGE PAVEMENT "BOTH"

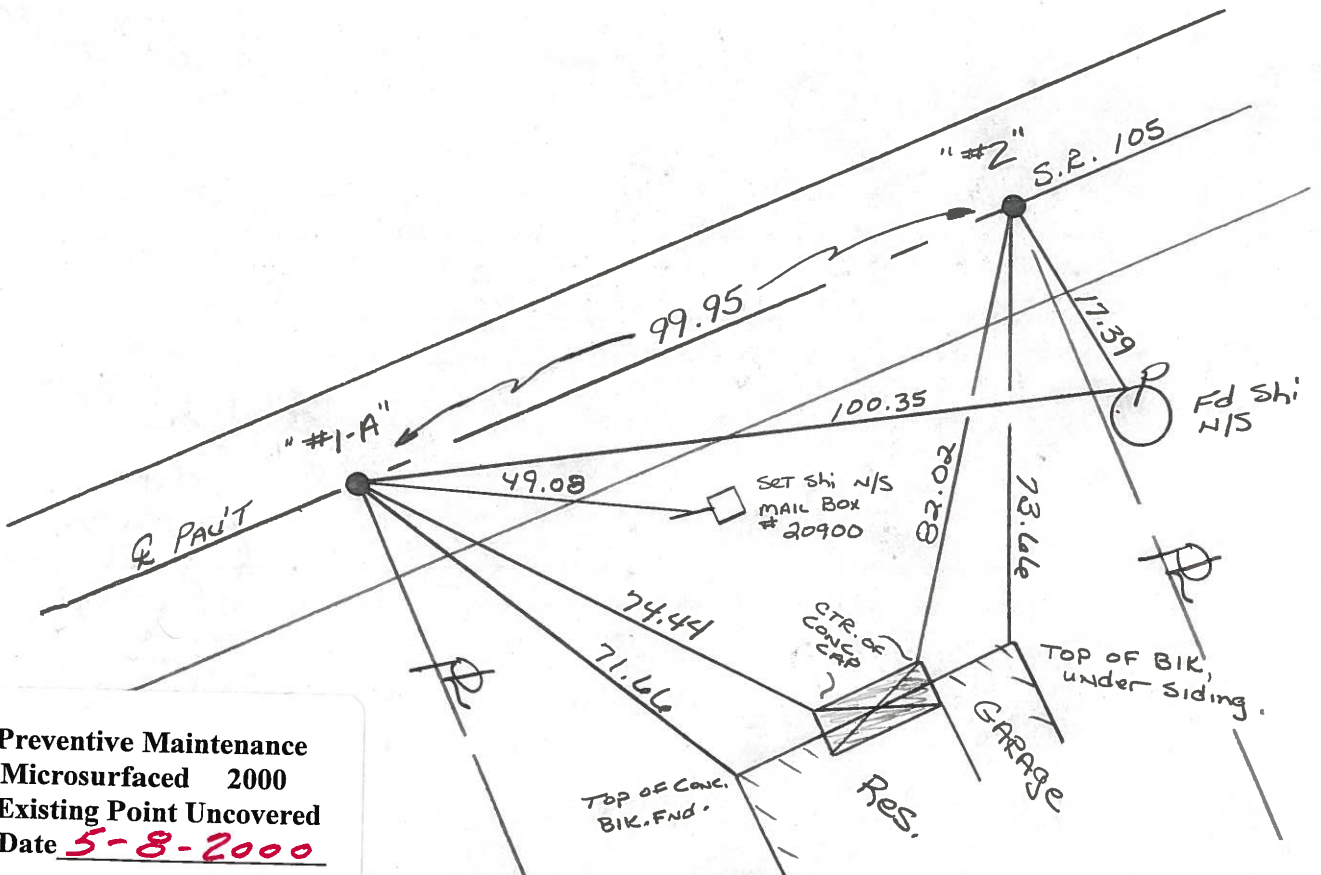
S.L.M. 6+64 & 7+64



RECORD: "1-A"
P.O.T. 6+64.05

RESET PK'S & WASHER'S
9-27-94
mB

RECORD: "2"
P.O.T. 7+64.05



Preventive Maintenance
Microsurfaced 2000
Existing Point Uncovered
Date 5-8-2000

PERSONNEL TITLE PERSONNEL TITLE

Schneider	Ash
Mosser	Cronin
	Ripple
	Geyman

COUNTY Ottawa DATE 8-2-74

S. R. 105 WEATHER Sunny

SEC. 23 TEMP. 80°

DESCRIPTION Harris Twp. LEFT CENTER LINE RIGHT JOB NO.

