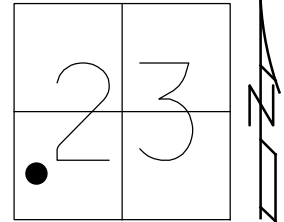


O.D.O.T. DISTRICT 2 SURVEY OFFICE (USE ONLY)

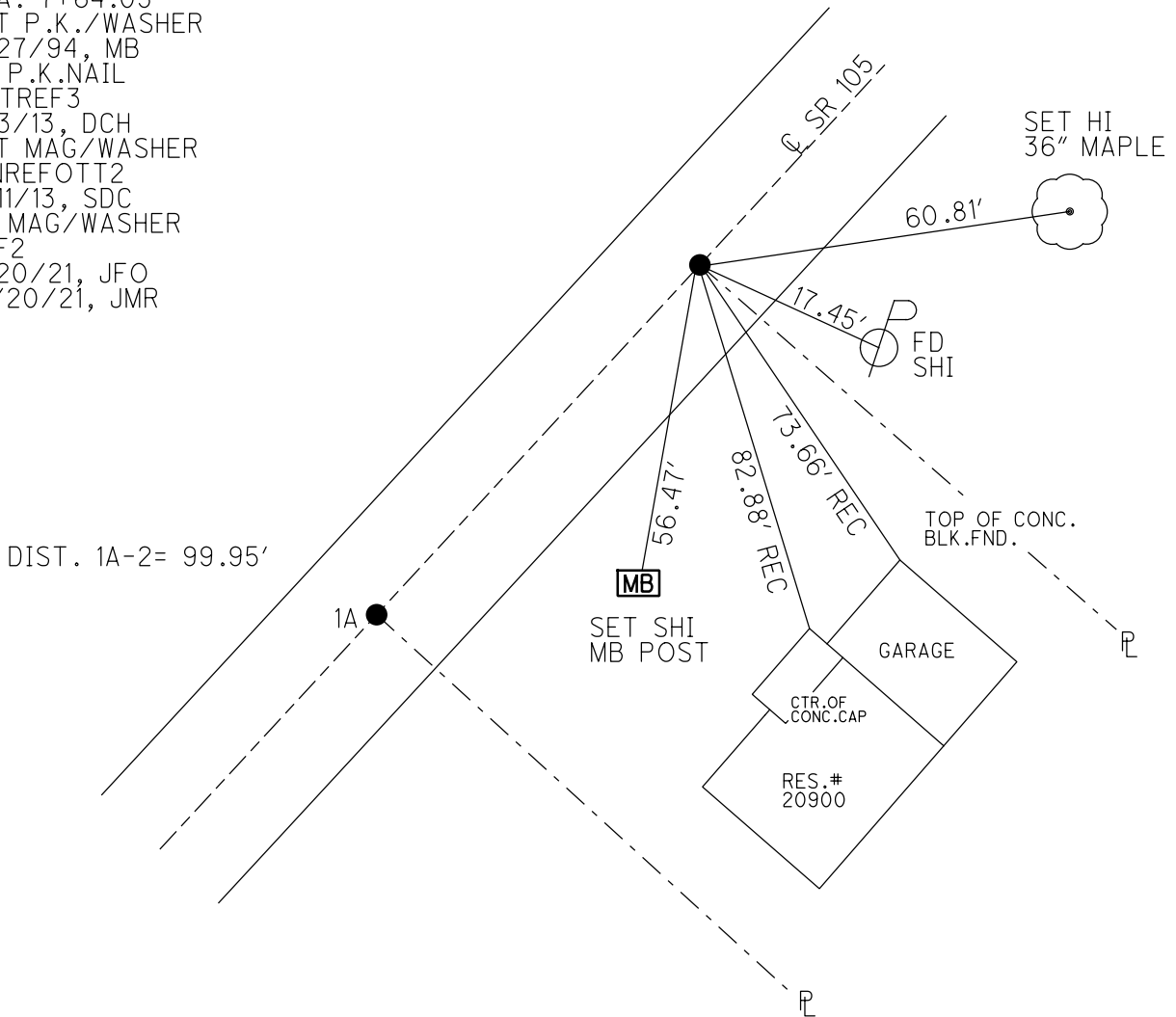
PERSONNEL _____ REFERENCE NO. 2 SHEET 3 OF 33
 NOTES RHOADES DATE 7/20/21 ROUTE SR 105
 H.C. O'DONNELL WEATHER HAZE COUNTY OTTAWA
 R.C. RHOADES TEMP. 71° TOWNSHIP HARRIS
 DWG BY RHOADES PID CHIP SEAL SECTION 23
 T 6 N R 13 E

TYPE MONUMENT MAG/WASHER
 ON SURFACE - ~~BELOW~~ ON _____
 OFFSET ☉ PAVEMENT ON _____ LT : RT
10.2' TO RT EDGE PAVEMENT
 STATION: 7+64



HORIZ.DATUM: NAD83 2011 GEOID: NAVD88 2018
 GRID: NORTHING: 655268.713 EASTING: 1739261.999

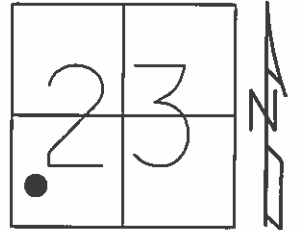
RECORD: P.O.T.
 STA. 7+64.05
 SET P.K./WASHER
 9/27/94, MB
 FD P.K.NAIL
 OTTREF3
 5/3/13, DCH
 SET MAG/WASHER
 FINREFOTT2
 7/11/13, SDC
 FD MAG/WASHER
 REF2
 7/20/21, JFO
 10/20/21, JMR



O.D.O.T. DISTRICT 2 SURVEY OFFICE (USE ONLY)

PERSONNEL	REFERENCE NO. <u>2</u>	SHEET <u>3</u> OF <u>33</u>
NOTES <u>HOMAN</u>	DATE <u>5/3/13</u>	ROUTE <u>SR 105</u>
H.C. <u>HOMAN</u>	WEATHER <u>CLEAR</u>	COUNTY <u>OTTAWA</u>
R.C. <u>ROUSOS</u>	TEMP. <u>60°</u>	TOWNSHIP <u>HARRIS</u>
		SECTION <u>23</u>
		T <u>6</u> N R <u>13</u> E

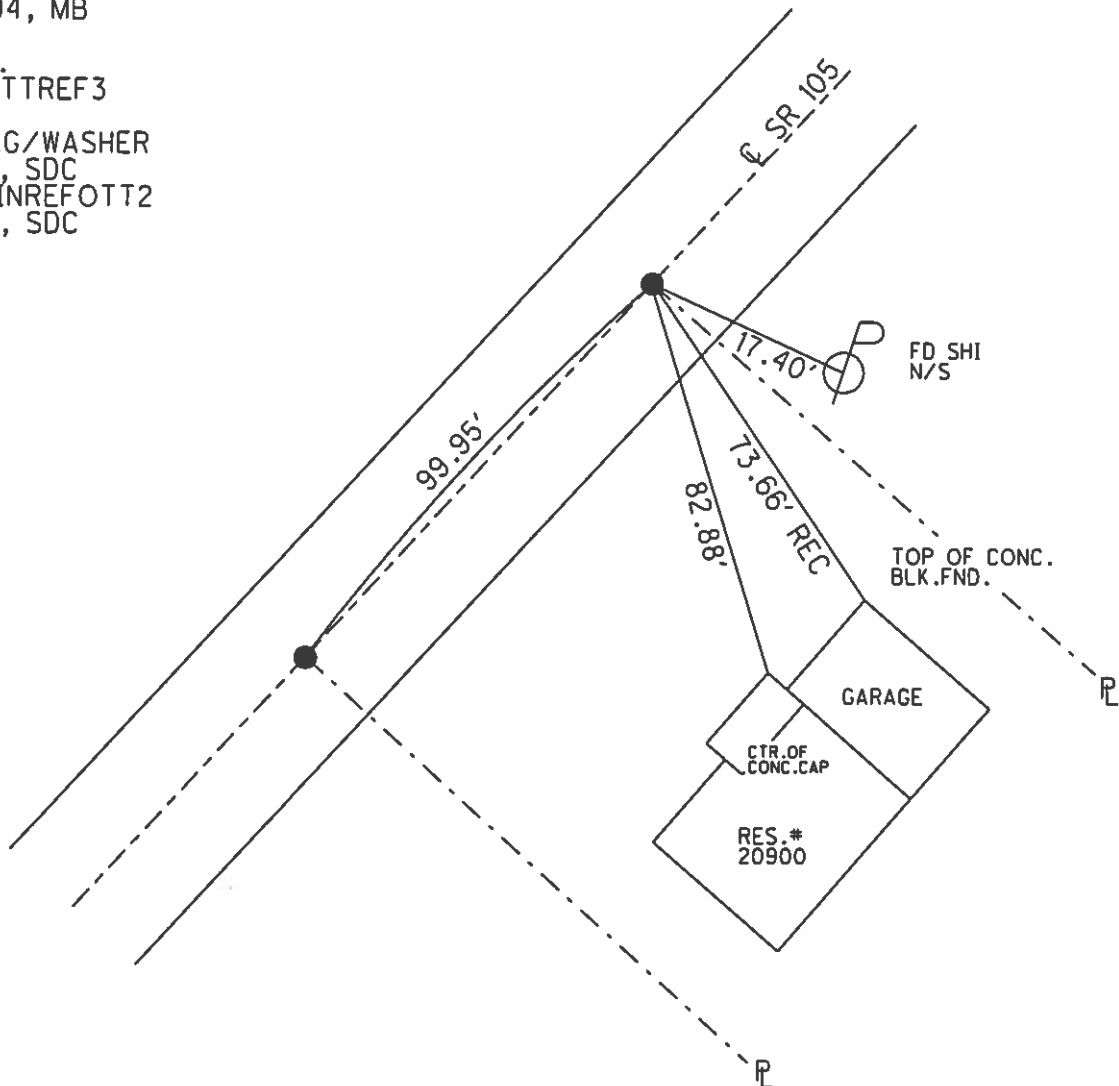
TYPE MONUMENT P.K.NAIL
 ON SURFACE - ~~BELOW~~ ON
 LEFT - Q PAV'T - RIGHT ON
10.2' TO RT. EDGE PAVEMENT
 S.L.M. 7+64
 Grid: Northing: 655268.626 Easting: 1739261.977



RECORD: P.O.T.
 7+64.05
 RESET P.K./WASHER
 9/27/94, MB

FD P.K.
 GPS, OTTREF3

SET MAG/WASHER
 7/9/13, SDC
 GPS, FINREFOTT2
 7/11/13, SDC



O.D.O.T. DISTRICT 2 SURVEY OFFICE

PERSONNEL _____

REFERENCE NO. 1-A & 2

SHEET 2 OF 26

NOTES Barnhise1

H.C. PEUNTY

DATE 9-14-94

ROUTE 105

R.C. SLOVAK

WEATHER CLEAR

COUNTY OTTAWA

TEMP. + 85°

TOWNSHIP HARRIS

SECTION 23

T. 6 N. R. 13 E

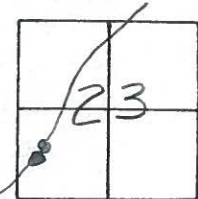
TYPE MONUMENT PK NAIL (BOTH)

ON SURFACE - BELOW 4" 1/2"

LEFT - C. PAV'T. - RIGHT YES YES

10.2 TO RT. EDGE PAVEMENT "BOTH"

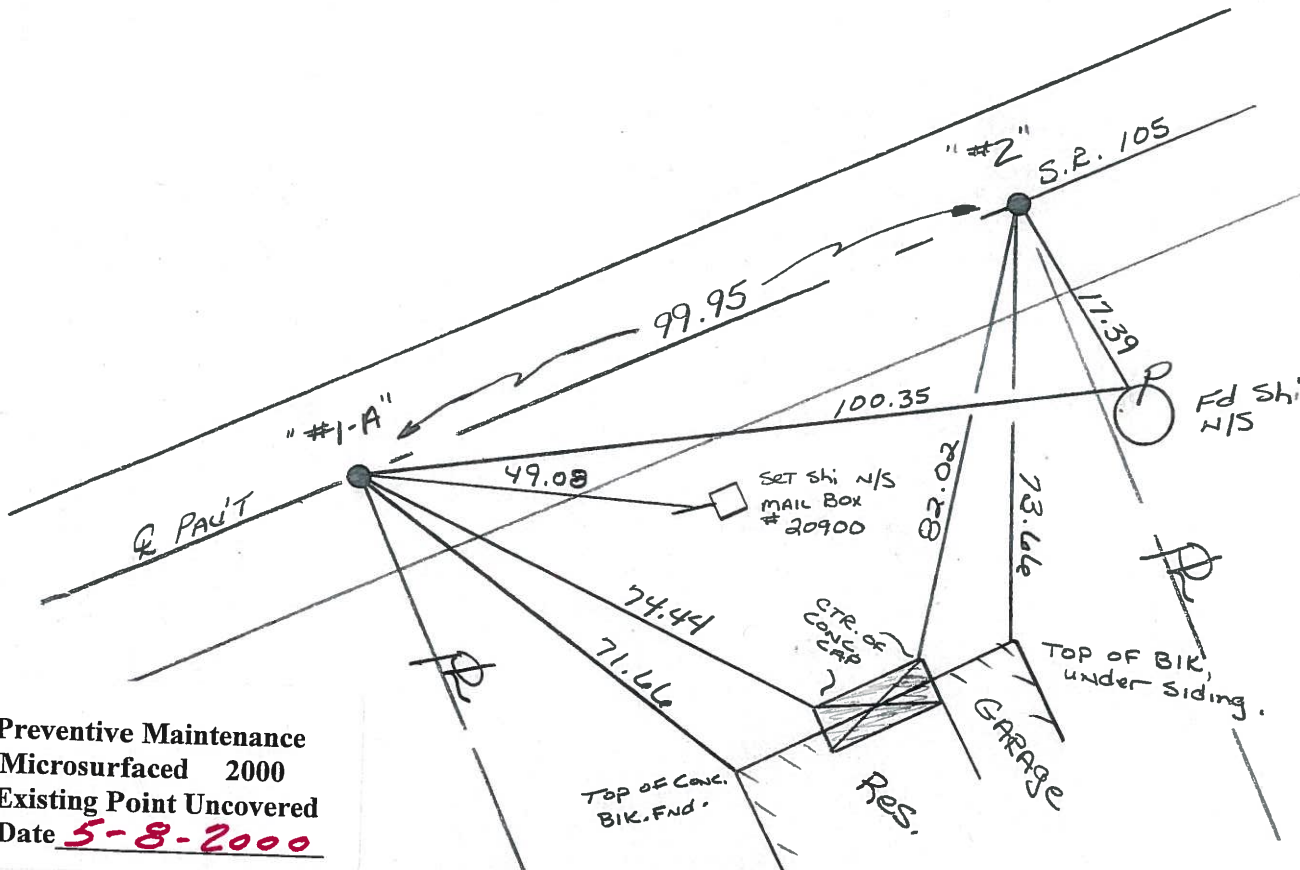
S.L.M. 6+64 & 7+64



RECORDED: "1-A"
P.O.T. 6+64.05

RESET PK'S & WASHER'S
9-27-94
mB

RECORDED: "2"
P.O.T. 7+64.05

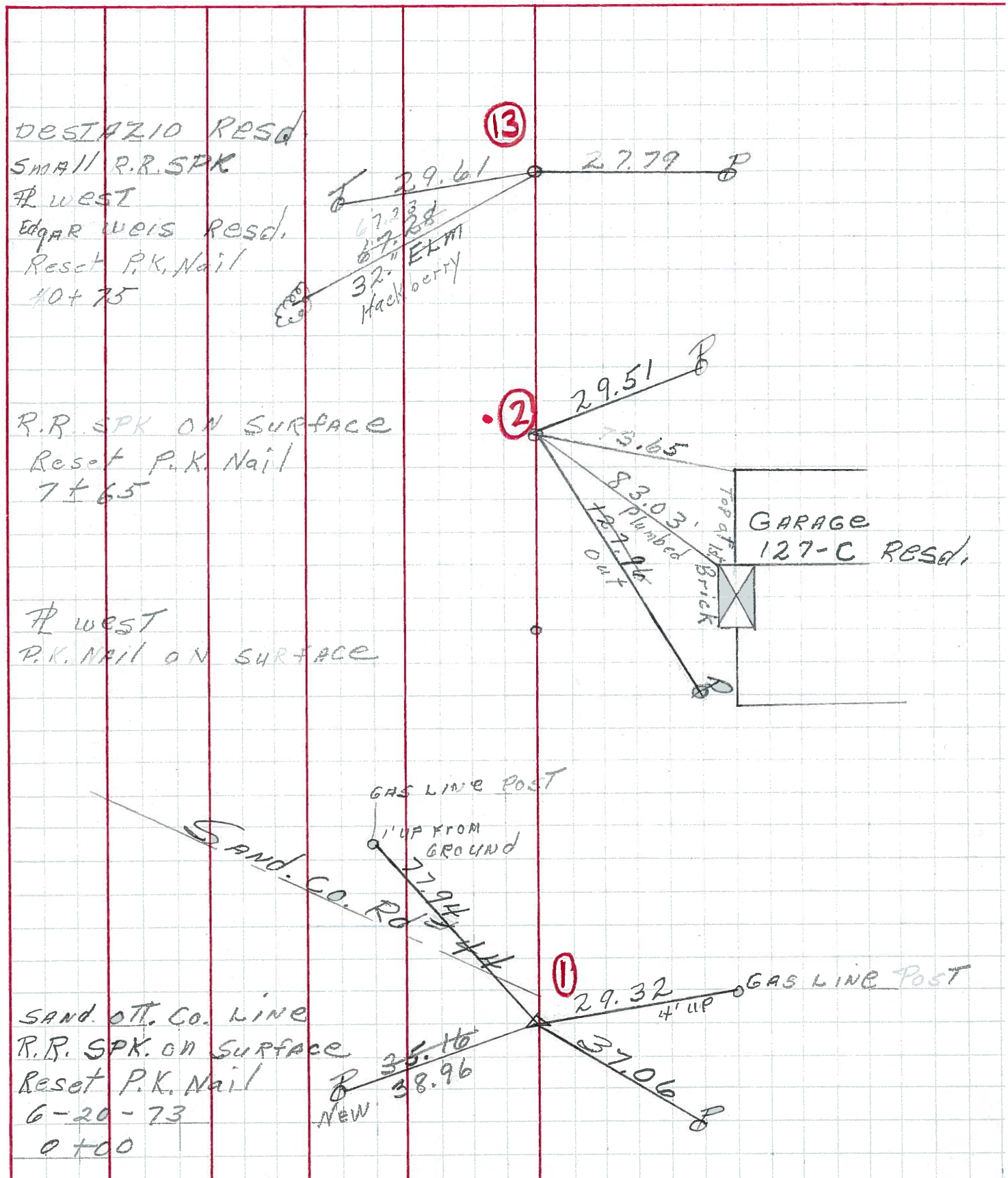


Preventive Maintenance
Microsurfaced 2000
Existing Point Uncovered
Date 5-8-2000

PERSONNEL	TITLE	PERSONNEL	TITLE
MOSSER			
BARBAUR			
GELOMAN			
VINSON			

COUNTY OTTAWA
 S. R. 105
 SEC. OTT. CO. LINE TO HARBER
 WEATHER SUNNY
 TEMP. 65°

DESCRIPTION TIES FOR CONTROL TIES JOB NO. _____



PERSONNEL TITLE PERSONNEL TITLE

Schneider Ash
Mosser Cronin
Ripple
Geyman

COUNTY Ottawa

DATE 8-2-74

S. R. 105

WEATHER Sunny

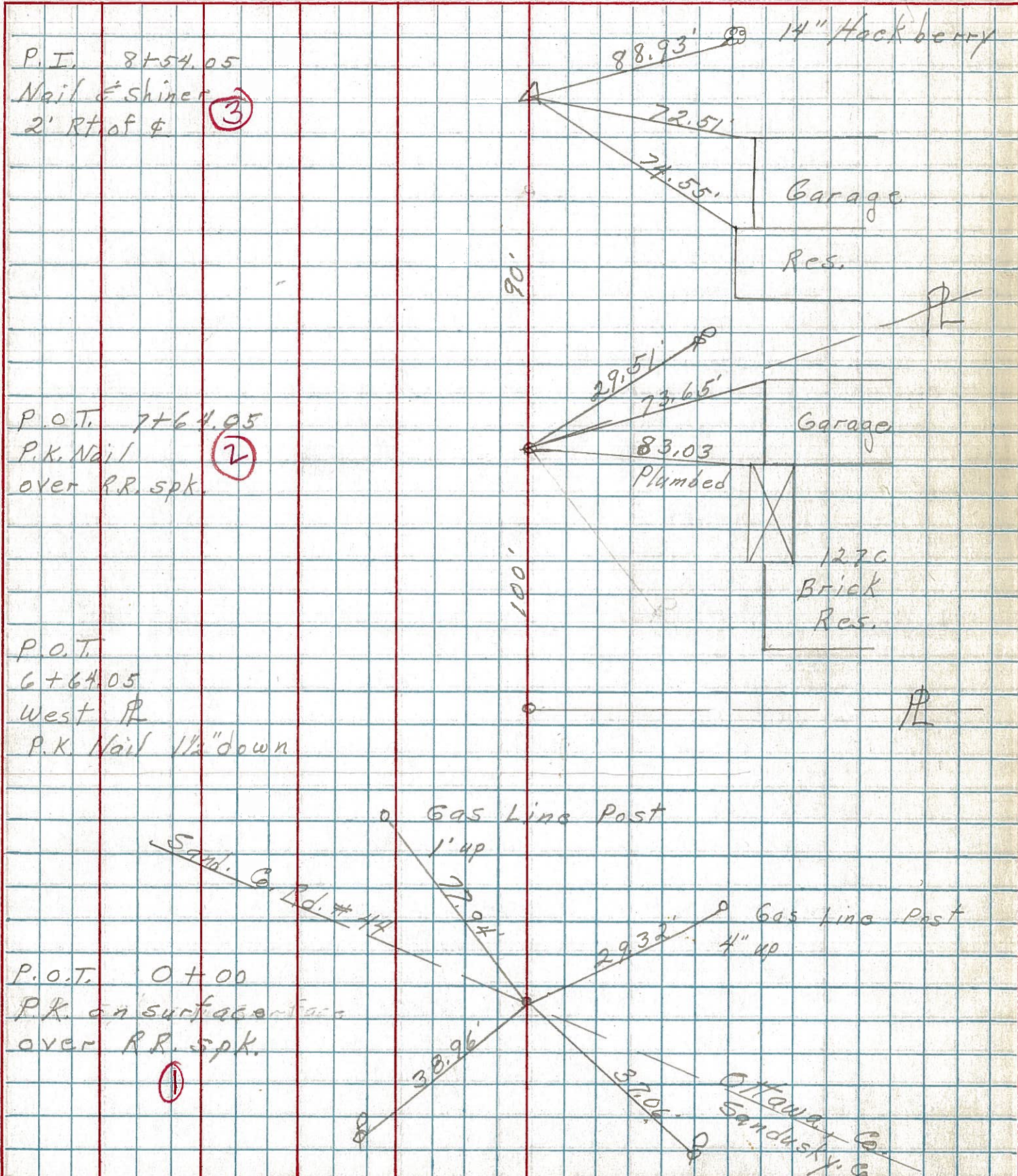
SEC. 23

TEMP. 80°

DESCRIPTION Harris Twp.

JOB NO.

LEFT CENTER LINE RIGHT



P.I. 8+54.05
Nail & Shiner
2' Rt of & (3)

P.O.T. 7+64.05
P.K. Nail
over R.R. spk. (2)

P.O.T. 6+64.05
West R
P.K. Nail 1 1/2" down

P.O.T. 0+00
P.K. on surface
over R.R. spk. (1)