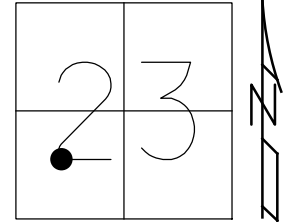


O.D.O.T. DISTRICT 2 SURVEY OFFICE (USE ONLY)

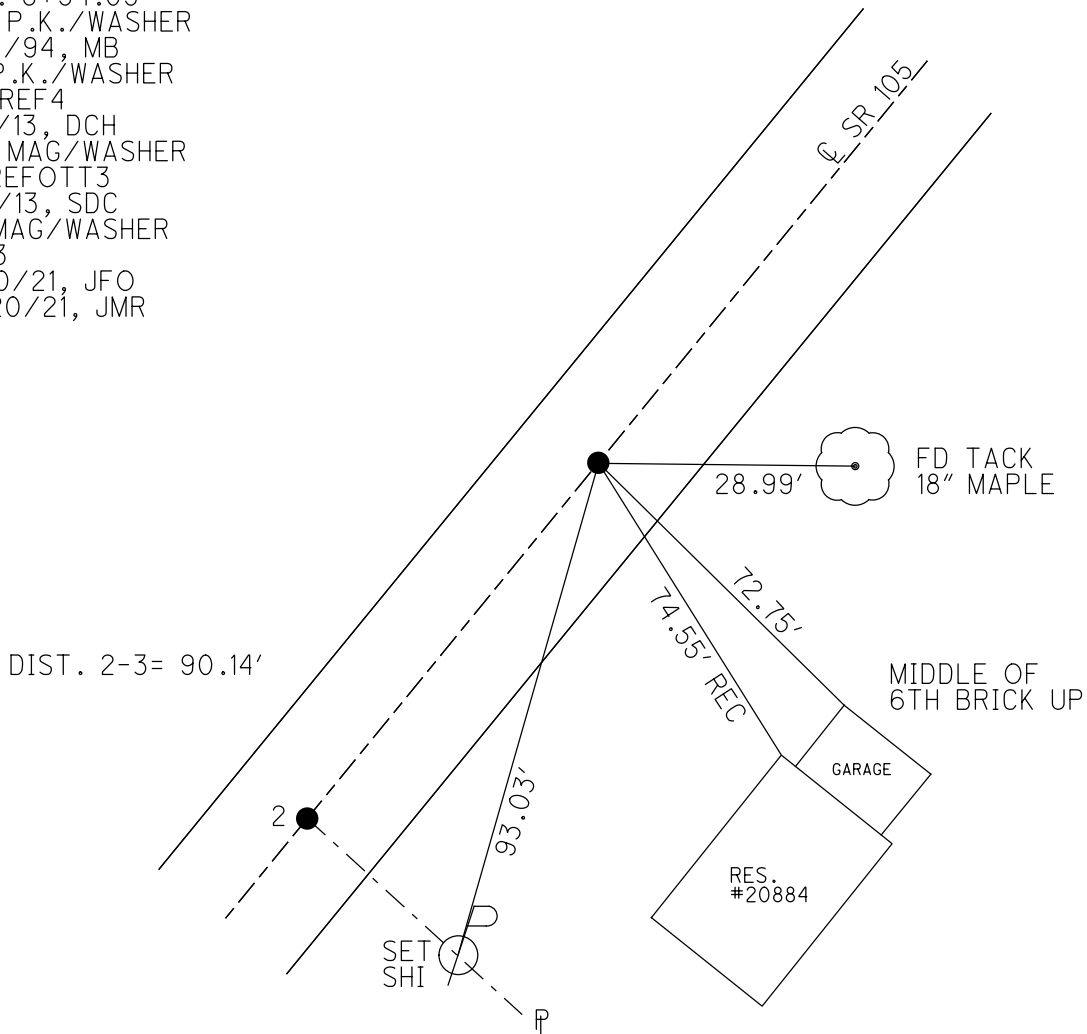
PERSONNEL _____ REFERENCE NO. 3 SHEET 4 OF 33
 NOTES RHOADES DATE 7/20/21 ROUTE SR 105
 H.C. O'DONNELL WEATHER HAZE COUNTY OTTAWA
 R.C. RHOADES TEMP. 71° TOWNSHIP HARRIS
 DWG BY RHOADES PID CHIP SEAL SECTION 23
 T 6 N R 13 E

TYPE MONUMENT MAG/WASHER
 ON SURFACE - ~~BELOW~~ ON
 OFFSET ℄ PAVEMENT 3.9' ~~℄~~ : RT
10.2' TO RT EDGE PAVEMENT
 STATION: 8+54



HORZ. DATUM: NAD83 2011 GEOID: NAVD88 2018
 GRID: NORTHING: 655335.773 EASTING: 1739322.138

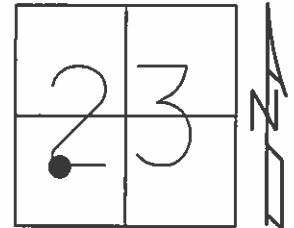
RECORD: P.I.
 STA. 8+54.05
 SET P.K./WASHER
 9/14/94, MB
 FD P.K./WASHER
 OTTREF4
 5/2/13, DCH
 SET MAG/WASHER
 FINREFOTT3
 7/11/13, SDC
 FD MAG/WASHER
 REF3
 7/20/21, JFO
 10/20/21, JMR



O.D.O.T. DISTRICT 2 SURVEY OFFICE (USE ONLY)

PERSONNEL _____ REFERENCE NO. 3 SHEET 4 OF 33
 NOTES HOMAN DATE 5/2/13 ROUTE SR 105
 H.C. HOMAN WEATHER CLEAR COUNTY OTTAWA
 R.C. ROUSOS TEMP. 60° TOWNSHIP HARRIS
 _____ SECTION 23
 _____ T 6 N R 13 E

TYPE MONUMENT P.K./WASHER
 ON SURFACE - ~~BELOW~~ ON _____
~~LEFT~~ - Q PAV'T - RIGHT 3.9'
10.2' TO RT EDGE PAVEMENT
 S.L.M. 8+54

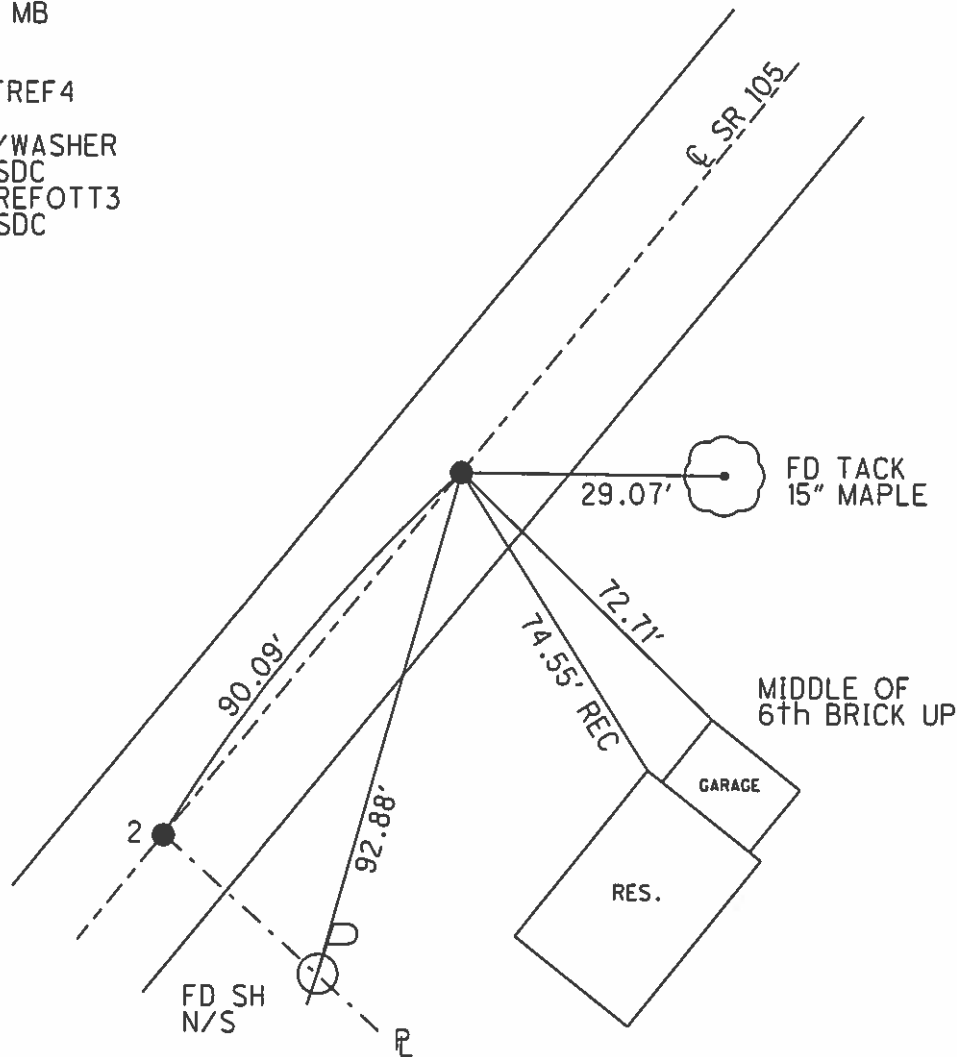


Grid: Northing: 655335.751 Easting: 1739322.098

RECORD: P.I.
 8+54.05
 RESET P.K./WASHER
 9/14/94, MB

FD P.K.
 GPS, OTTREF4

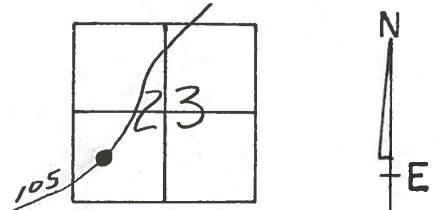
SET MAG/WASHER
 7/9/13, SDC
 GPS, FINREFOTT3
 7/11/13, SDC



O.D.O.T. DISTRICT 2 SURVEY OFFICE

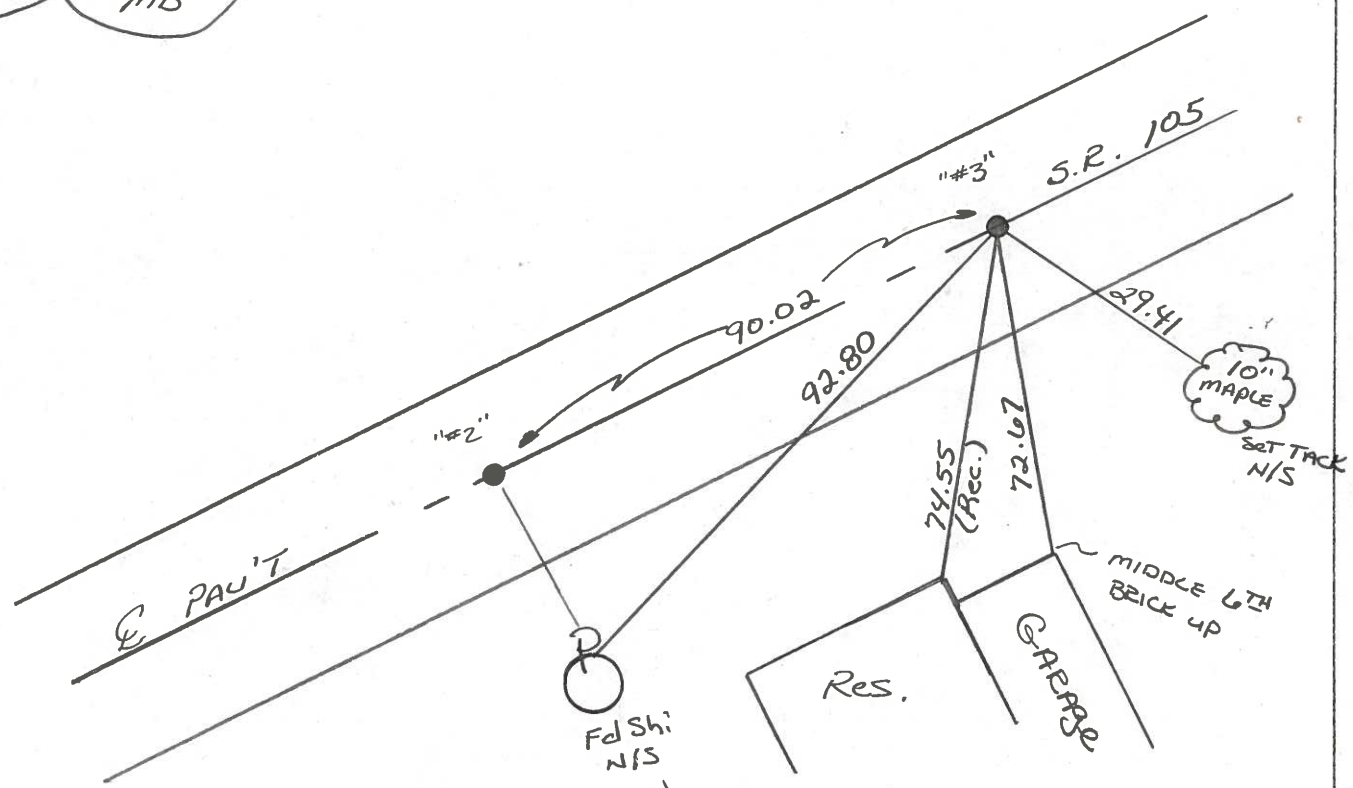
PERSONNEL _____ REFERENCE NO. 3 SHEET 3 OF 26
 NOTES Barnhiser
 H.C. PEUNTY DATE 9-14-94 ROUTE 105
 R.C. SLOVAK WEATHER CLEAR COUNTY OTTAWA
 _____ TEMP. +85° TOWNSHIP HARRIS
 _____ SECTION 23
 _____ T 6 N R 13 E

TYPE MONUMENT PK & WASHER
 ON SURFACE - BELOW 1 1/2
~~SET~~ - E PAV'T. - ~~RESET~~ yes
10.2 TO RT EDGE PAVEMENT
 S.L.M. 8+54



RECORD: P.I.
 8+54.05

RESET PK & WASHER
 9-14-94
 MB



Preventive Maintenance
 Microsurfaced 2000
 Existing Point Uncovered
 Date 5-8-2000

PERSONNEL TITLE PERSONNEL TITLE

Schneider Ash
Mosser Cronin
Ripple
Geyman

COUNTY Ottawa

DATE 8-2-74

S. R. 105

WEATHER Sunny

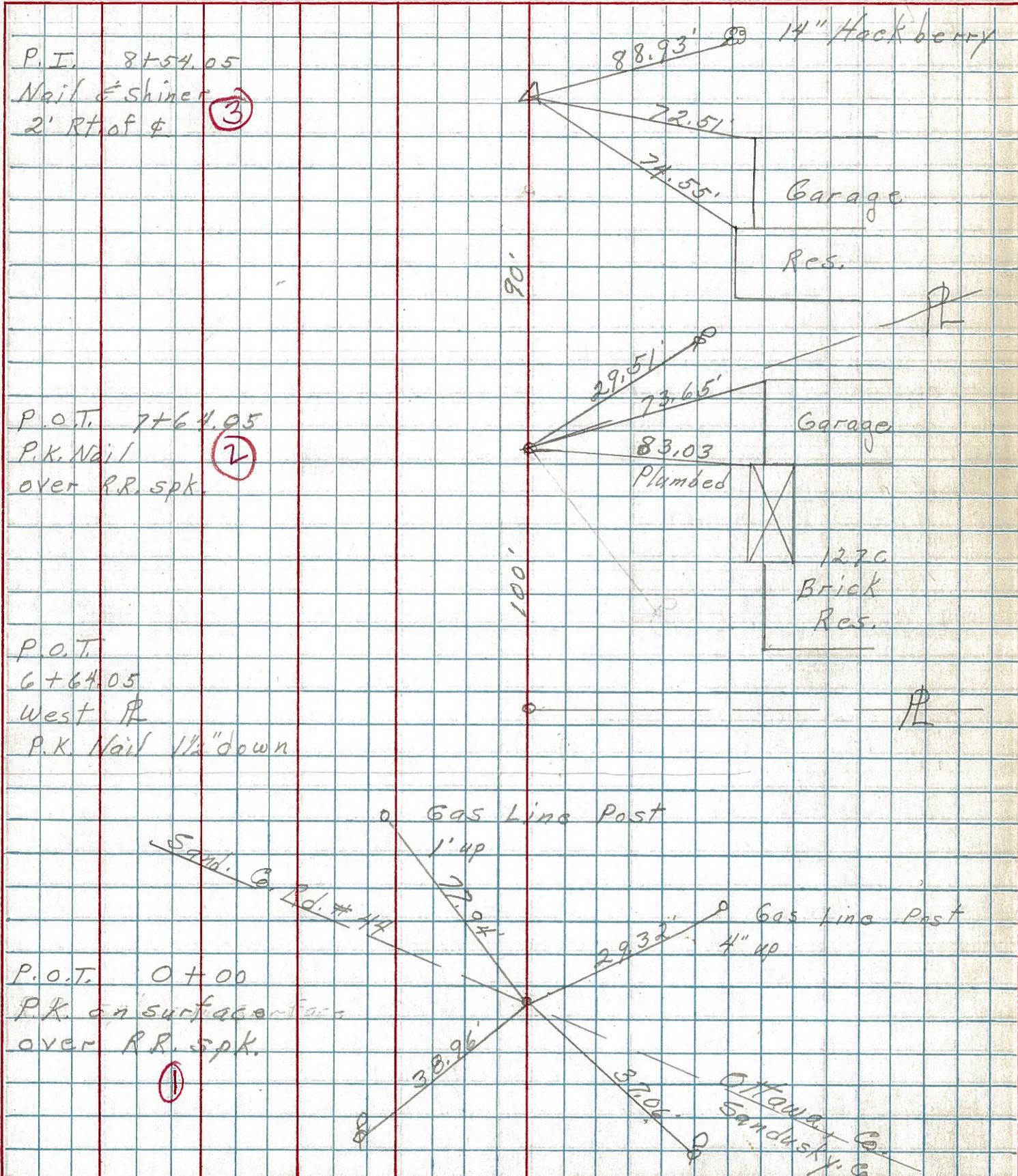
SEC. 23

TEMP. 80°

DESCRIPTION Harris Twp.

JOB NO.

LEFT CENTER LINE RIGHT



P.I. 8+54.05
Nail & Shiner
2' Rt of & (3)

P.O.T. 7+64.05
P.K. Nail
over R.R. spk (2)

P.O.T. 6+64.05
West R
P.K. Nail 1 1/2" down

P.O.T. 0+00
P.K. on surface
over R.R. spk (1)

Gas Line Post

Gas Line Post

Ottawa Sandusky Co.