

O.D.O.T. DISTRICT 2 SURVEY OFFICE (USE ONLY)

PERSONNEL

REFERENCE NO. 5

SHEET 6 OF 33

NOTES RHOADES DATE 7/20/21
 H.C. O'DONNELL WEATHER HAZE
 R.C. RHOADES TEMP. 71°

ROUTE SR 105
 COUNTY OTTAWA
 TOWNSHIP HARRIS
 SECTION 23
 T 6 N R 13 E

DWG BY RHOADES PID CHIP SEAL

TYPE MONUMENT MAG NAIL

ON SURFACE - ~~BELOW~~ ON

OFFSET \odot PAVEMENT 1.0' ~~LT~~ : RT

9.7' TO RT EDGE PAVEMENT

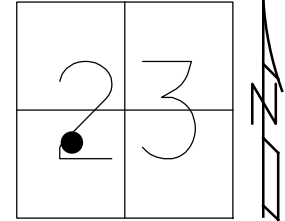
STATION: 11+04

HORZ.DATUM: NAD83 2011

GEOID: NAVD88 2018

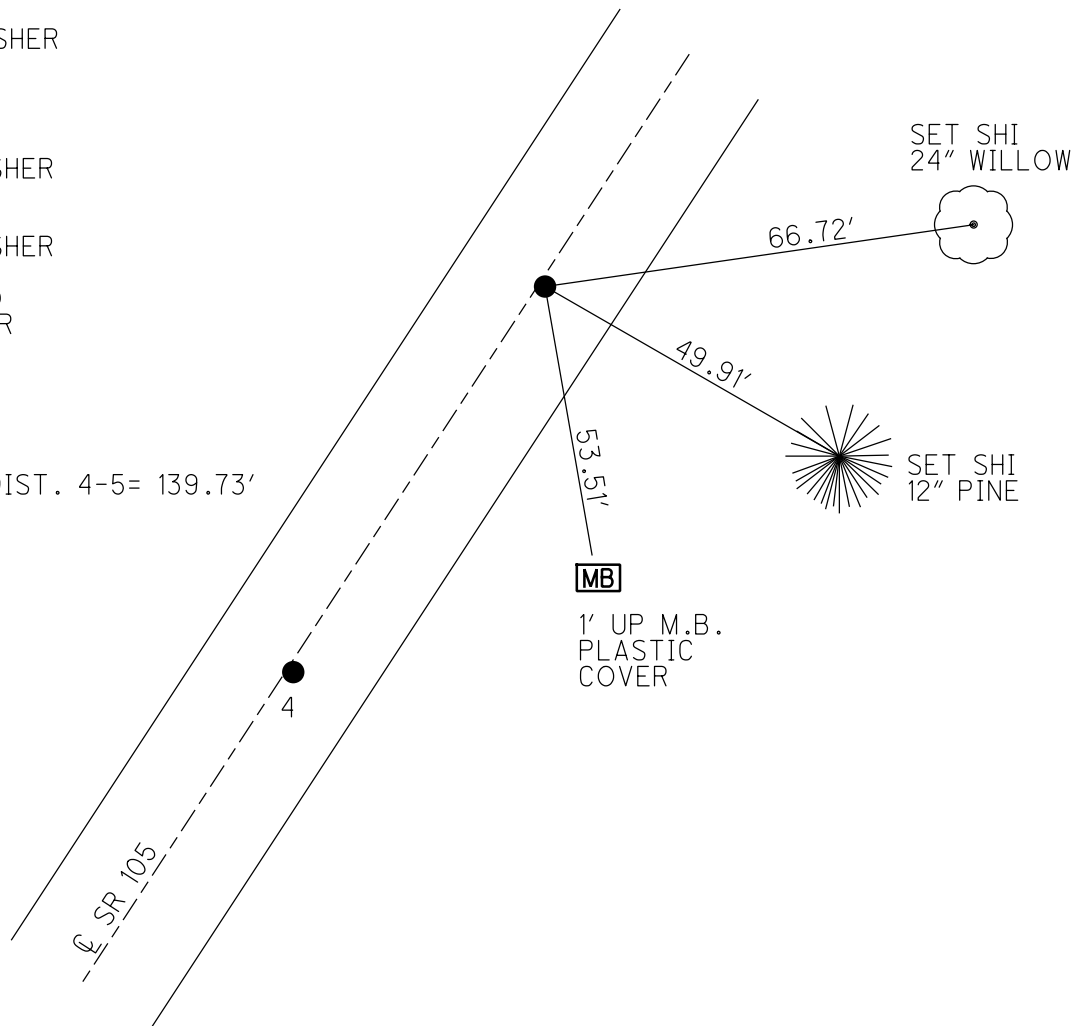
GRID: NORTHING: 655542.538

EASTING: 1739461.450



RECORD: P.I.
 SET P.K./WASHER
 9/14/94, MB
 FD P.K.NAIL
 OTTREF6
 5/2/13, DCH
 SET MAG/WASHER
 FINREFOTT5
 7/11/13, SDC
 SET MAG/WASHER
 REF5
 7/20/21, JFO
 10/20/21, JMR

DIST. 4-5= 139.73'



O.D.O.T. DISTRICT 2 SURVEY OFFICE (USE ONLY)

PERSONNEL

REFERENCE NO. 5

SHEET 6 OF 33

NOTES HOMAN

DATE 5/2/13

ROUTE SR 105

H.C. HOMAN

WEATHER CLEAR

COUNTY OTTAWA

R.C. ROUSOS

TEMP. 60°

TOWNSHIP HARRIS

SECTION 23

T 6 N R 13 E

TYPE MONUMENT P.K.NAIL

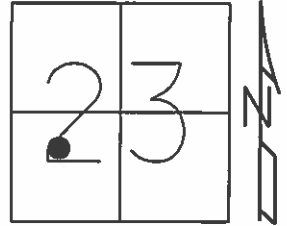
ON SURFACE - BELOW ON

LEFT - Q PAV'T - RIGHT 1.0'

9.7' TO RT EDGE PAVEMENT

S.L.M. 11++04

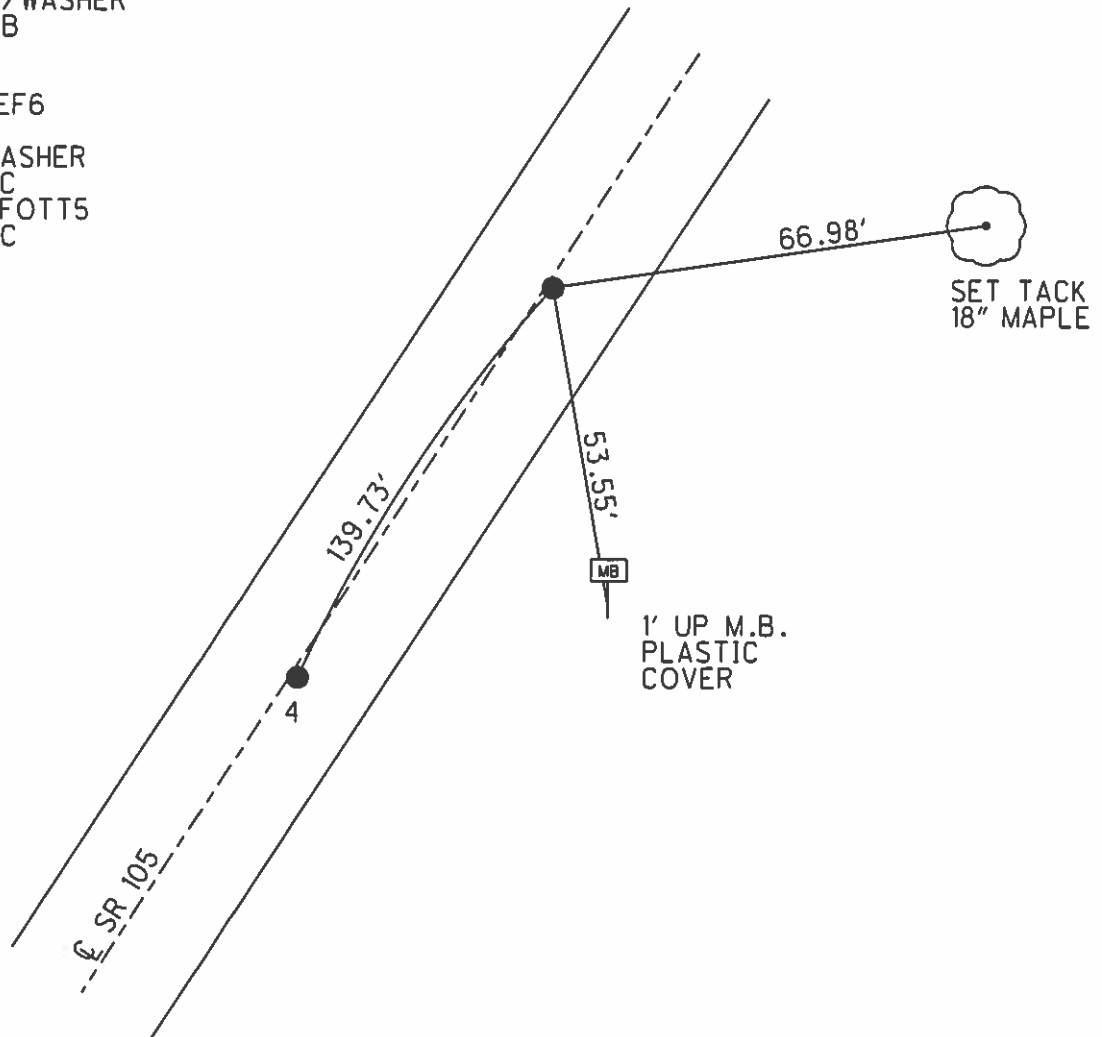
Grid: Northing: 655542.536 Easting: 1739461.422



RECORD: P.I.
RESET P.K./WASHER
9/14/94, MB

FD P.K.
GPS, OTTREF6

SET MAG/WASHER
7/9/13, SDC
GPS, FINREFOTT5
7/11/13, SDC



O.D.O.T. DISTRICT 2 SURVEY OFFICE

PERSONNEL

REFERENCE NO. 455

SHEET 4 OF 26

NOTES BARNHISEL

H.C. PRUNTY

DATE 9-14-94

ROUTE 105

R.C. SLOUAK

WEATHER CLEAR

COUNTY OTTAWA

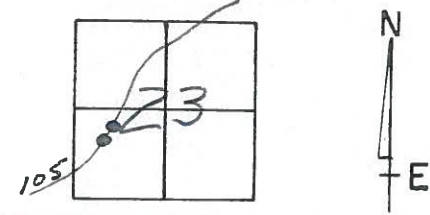
TEMP. +85°

TOWNSHIP HARRIS

SECTION 23

T. 6 N. R. 13 E.

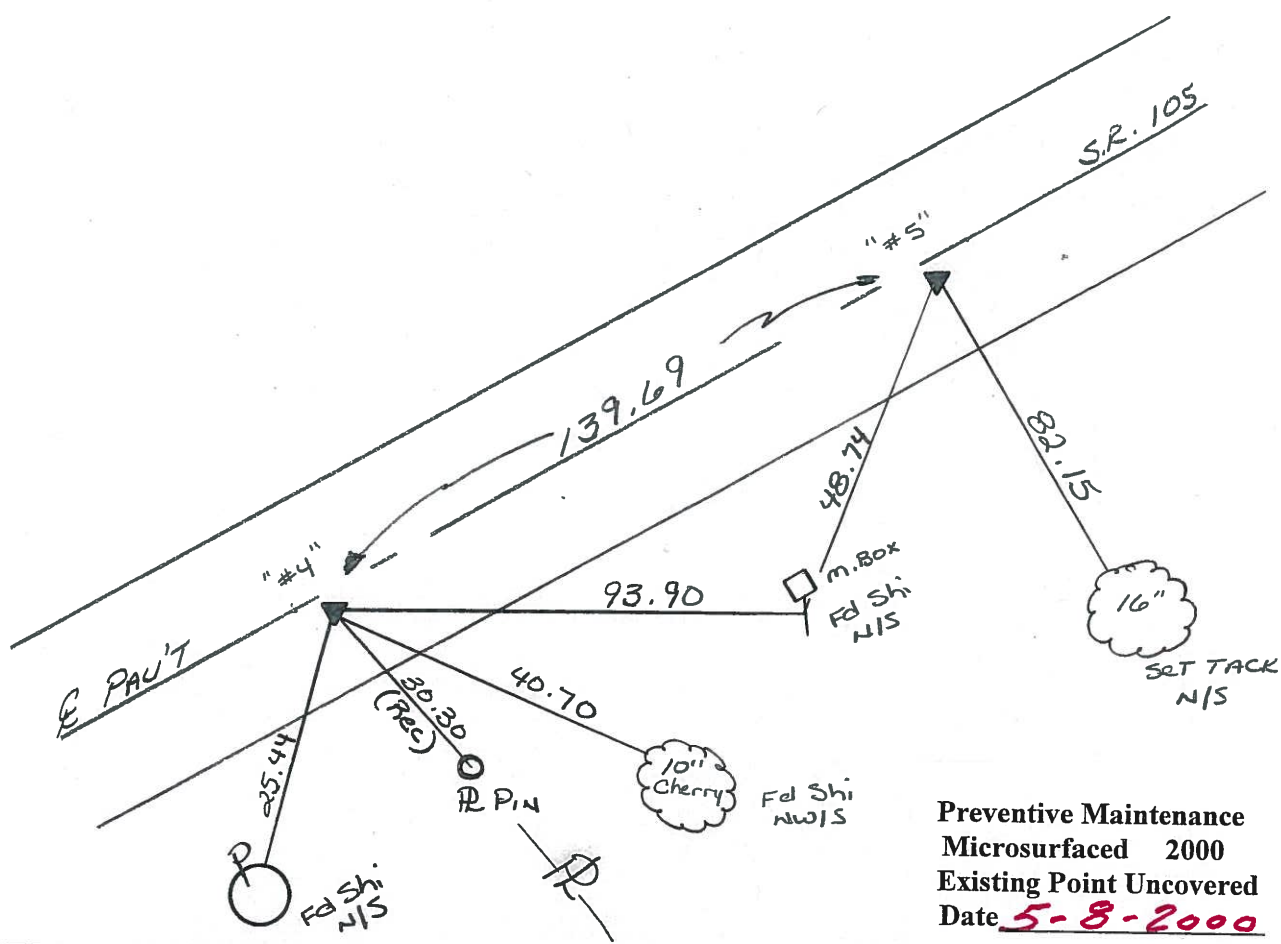
	#4	#5
TYPE MONUMENT	PK NAIL	PK NAIL
ON SURFACE - BELOW	1/2"	3"
LEFT - C. PAV'T. - RIGHT	1.5	1.0
9.7 TO RT EDGE PAVEMENT	"BOTH"	
S.L.M.	9+64	11+04



Record: #4
P.I. 9+64.05

Reset PK's & Washer's
9-14-94
MB

Record #5
P.I.



Preventive Maintenance
Microsurfaced 2000
Existing Point Uncovered
Date 5-8-2000

PERSONNEL TITLE PERSONNEL TITLE

COUNTY Ottawa

DATE 8-2-74

S. R. 10.5

WEATHER Sunny

SEC. 23

TEMP. 80°

DESCRIPTION Harris Twp.

JOB NO.

