

O.D.O.T. DISTRICT 2 SURVEY OFFICE (USE ONLY)

PERSONNEL

REFERENCE NO. 7

SHEET 8 OF 33

NOTES RHOADES

DATE 7/20/21

ROUTE SR 105

H.C. O'DONNELL

WEATHER CLEAR

COUNTY OTTAWA

R.C. RHOADES

TEMP. 75°

TOWNSHIP HARRIS

SECTION 23

DWG BY RHOADES PID CHIP SEAL

T 6 N R 13 E

TYPE MONUMENT MAG/WASHER

ON SURFACE - ~~BELOW~~ ON

OFFSET Q PAVEMENT 0.5' ~~LT~~ : RT

9.5' TO RT EDGE PAVEMENT

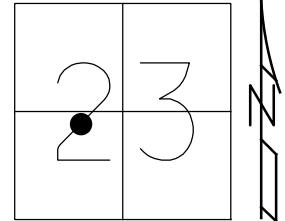
STATION: 16+18

HORZ. DATUM: NAD83 2011

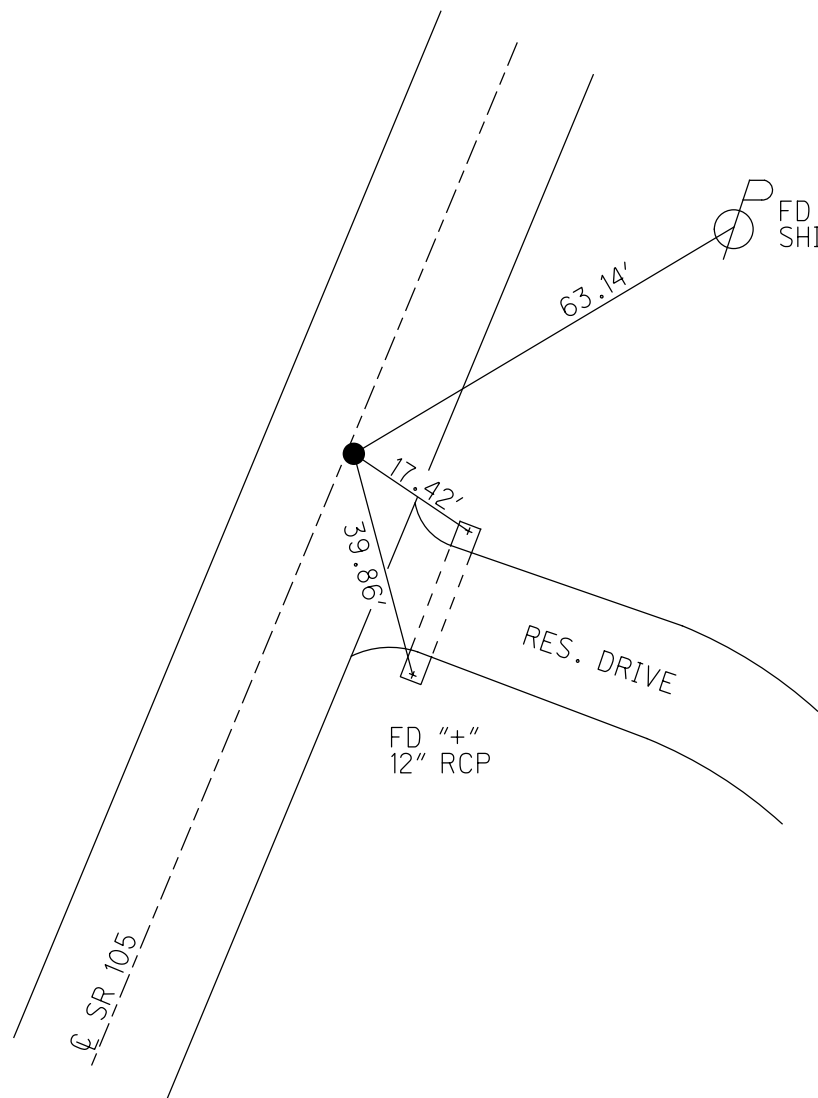
GEOID: NAVD88 2018

GRID: NORTHING: 656007.788

EASTING: 1739680.090



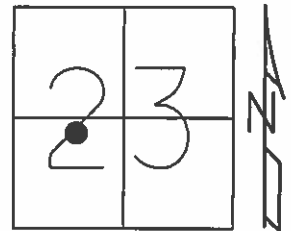
RECORD: P.I.  
 SET P.K./WASHER  
 9/26/94, MB  
 FD P.K./WASHER  
 OTTREF8  
 5/3/13, DCH  
 SET MAG/WASHER  
 FINREFOTT7  
 7/11/13, SDC  
 FD MAG/WASHER  
 REF7  
 7/20/21, JFO  
 10/20/21, JMR



O.D.O.T. DISTRICT 2 SURVEY OFFICE (USE ONLY)

PERSONNEL \_\_\_\_\_ REFERENCE NO. 7 SHEET 8 OF 33  
NOTES HOMAN DATE 5/3/13 ROUTE SR 105  
H.C. HOMAN WEATHER CLOUDY COUNTY OTTAWA  
R.C. ROUSOS TEMP. 60° TOWNSHIP HARRIS  
SECTION 23  
T 6 N R 13 E

TYPE MONUMENT P.K./WASHER  
ON SURFACE - BELOW ON  
LEFT - CL PAV'T - RIGHT 0.5'  
9.5' TO RT EDGE PAVEMENT  
S.L.M. 16+18

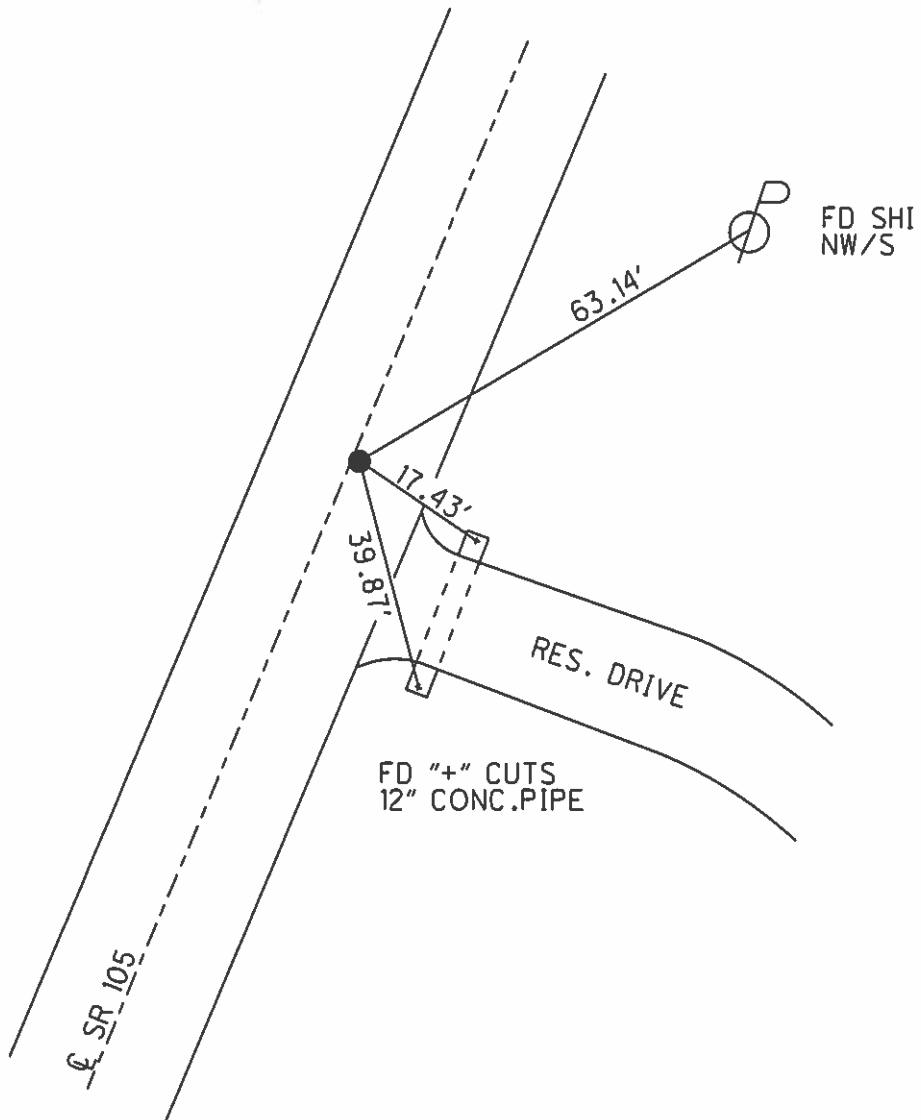


Grid: Northing: 656007.765 Easting: 1739680.021

RECORD: P.I.  
RESET P.K./WASHER  
9/26/94, MB

FD P.K.  
GPS, OTTREF8

SET MAG/WASHER  
7/9/13, SDC  
GPS, FINREFOTT7  
7/11/13, SDC



# O.D.O.T. DISTRICT 2 SURVEY OFFICE

PERSONNEL

REFERENCE NO. 6 & 7

SHEET 5 OF 26

NOTES BARNHISEL

H.C. CORDES

R.C. SLOVAK

DATE 9-14-94

WEATHER CLEAR

TEMP. +85°

ROUTE 105

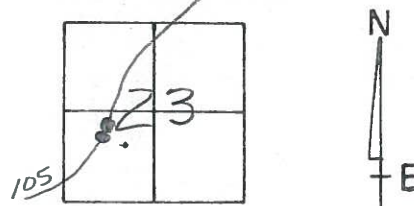
COUNTY OTTAWA

TOWNSHIP HARRIS

SECTION 23

T 6 N R 13 E

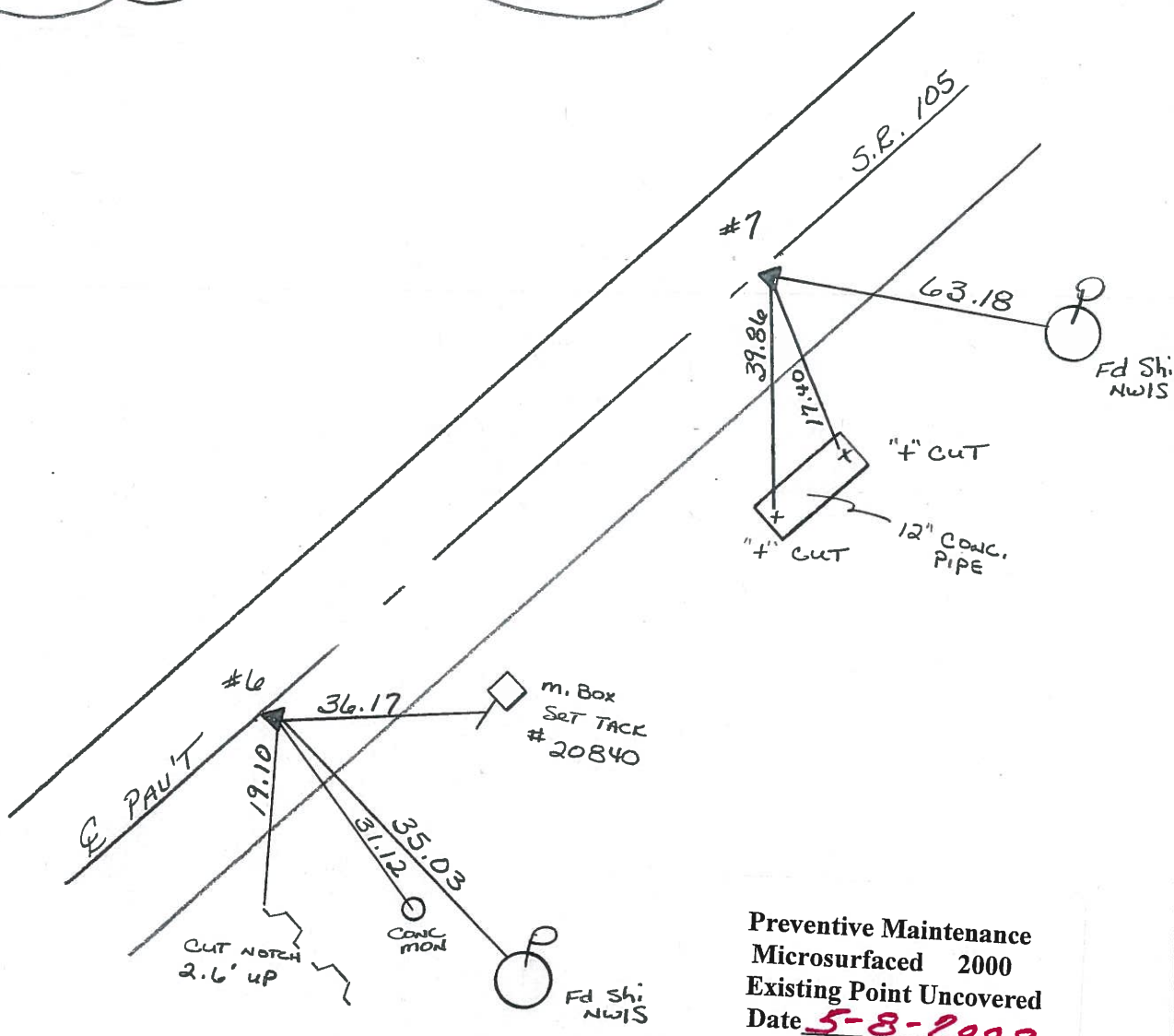
	#6	#7
TYPE MONUMENT	PK & WASHER	PK & WASHER
<del>ON</del> SURFACE - BELOW	1/2"	1/2"
<del>SET</del> - & PAV'T. - RIGHT	0.5	0.5
9.5 TO RT EDGE PAVEMENT	"BOTH"	
S.L.M.	12+34	16+18



RECORD: #6 P.I.

RECORD #7 P.I.

RESET PK'S & WASHERS  
9-26-94  
MB



Preventive Maintenance  
Microsurfaced 2000  
Existing Point Uncovered  
Date 5-8-2000

PERSONNEL TITLE PERSONNEL TITLE

COUNTY Ottawa

DATE 8-2-74

S. R. 10.5

WEATHER Sunny

SEC. 23

TEMP. 80°

DESCRIPTION Harris Twp.

JOB NO.

