

O.D.O.T. DISTRICT 2 SURVEY OFFICE (USE ONLY)

PERSONNEL

REFERENCE NO. 9

SHEET 10 OF 33

NOTES RHOADES

DATE 7/20/21

ROUTE SR 105

H.C. O'DONNELL

WEATHER CLEAR

COUNTY OTTAWA

R.C. RHOADES

TEMP. 75°

TOWNSHIP HARRIS

SECTION 23

DWG BY RHOADES

PID CHIP SEAL

T 6 N R 13 E

TYPE MONUMENT MAG/WASHER

ON SURFACE - ~~BELOW~~ ON

OFFSET 0.6' LT : ~~RT~~

10.1' TO RT EDGE PAVEMENT

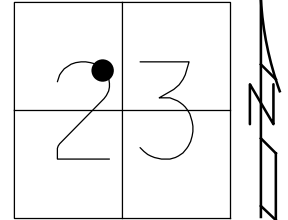
STATION: 30+91

HORIZ.DATUM: NAD83 2011

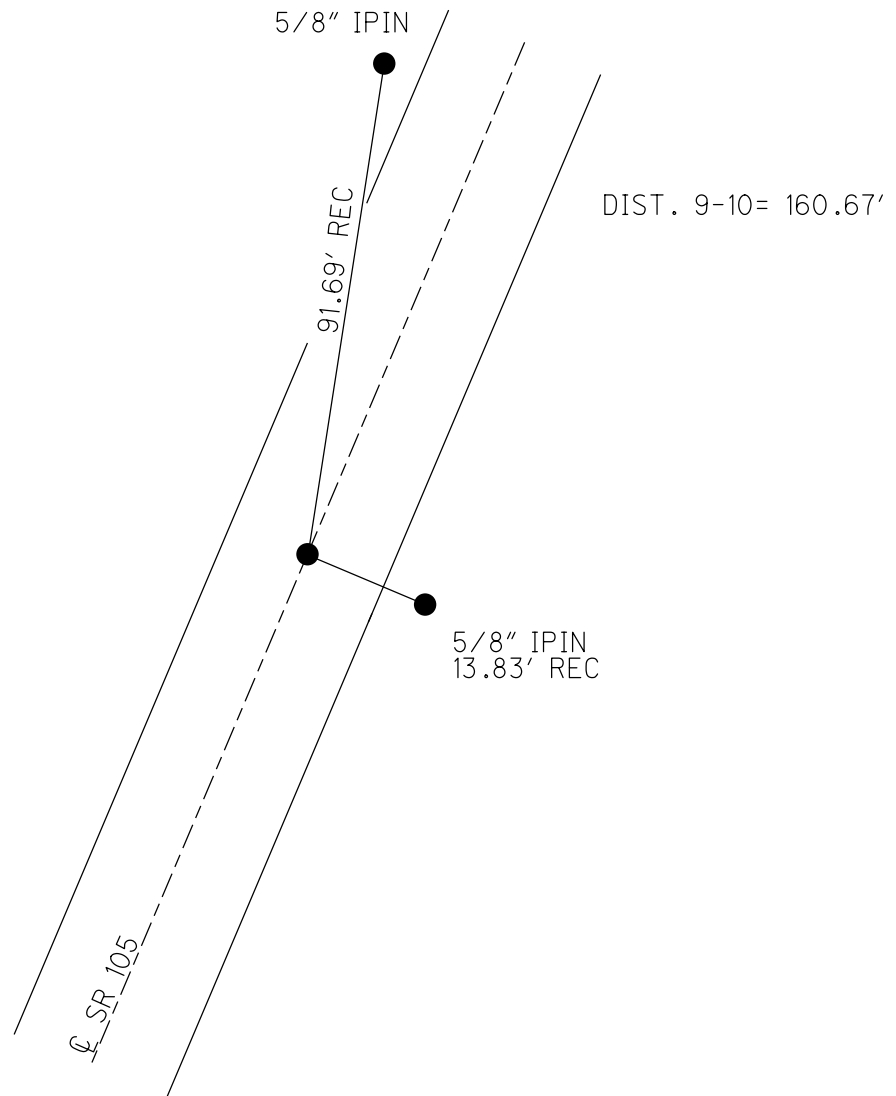
GEOID: NAVD88 2018

GRID: NORTHING: 657347.706

EASTING: 1740288.554



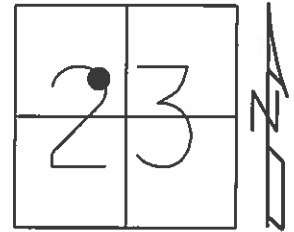
RECORD: P.I.
 SET P.K./WASHER
 9/26/94, MB
 FD P.K./WASHER
 OTTREF10
 5/3/13, DCH
 SET MAG/WASHER
 FINREFOTT9
 7/11/13, SDC
 FD MAG/WASHER
 REF9
 7/20/21, JFO
 10/20/21, JMR



O.D.O.T. DISTRICT 2 SURVEY OFFICE (USE ONLY)

PERSONNEL	REFERENCE NO. <u>9</u>	SHEET <u>10</u> OF <u>33</u>
NOTES <u>RHOADES</u>	DATE <u>7/11/13</u>	ROUTE <u>SR 105</u>
H.C. <u>CODER</u>	WEATHER <u>SUNNY</u>	COUNTY <u>OTTAWA</u>
R.C. <u>RHOADES</u>	TEMP. <u>75°</u>	TOWNSHIP <u>HARRIS</u>
		SECTION <u>23</u>
		T <u>6</u> N R <u>13</u> E

TYPE MONUMENT P.K./WASHER
 ON SURFACE - ~~BELOW~~ ON
 LEFT - Q PAV'T - RIGHT ON
10.1' TO RT EDGE PAVEMENT
 S.L.M. 30+91



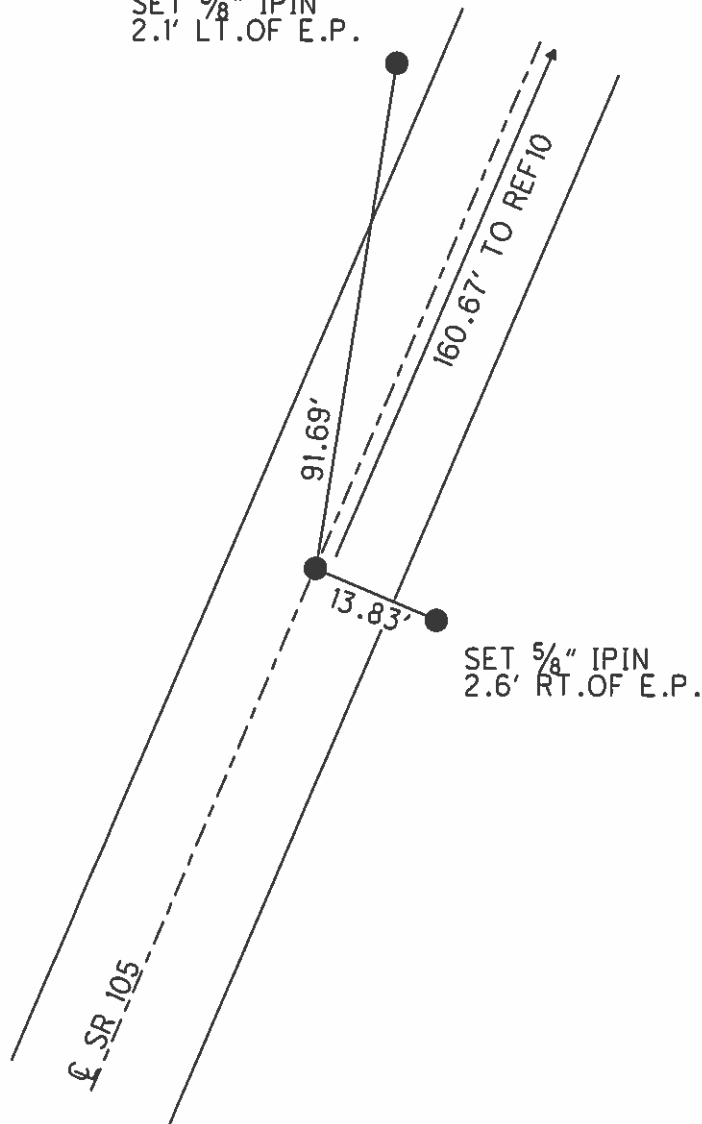
Grid: Northing: 657347.630 Easting: 1740288.446

RECORD: P.I.
 RESET P.K./WASHER
 9/26/94, MB

FD P.K.
 GPS, OTTREF10

TIES DESTROYED
 SET W/GPS
 SET MAG/WASHER
 GPS, FINREFOTT9
 7/11/13, SDC

SET $\frac{5}{8}$ " IPIN
 2.1' LT. OF E.P.



O.D.O.T. DISTRICT 2 SURVEY OFFICE

PERSONNEL

REFERENCE NO. 8 & 9

SHEET 6 OF 26

NOTES BARNHISEL

H.C. CORDES

DATE 9-26-94

ROUTE 105

R.C. SLOVAK

WEATHER Cloudy

COUNTY OTTAWA

TEMP. +60°

TOWNSHIP HARRIS

SECTION 23

T 6 N R 13 E

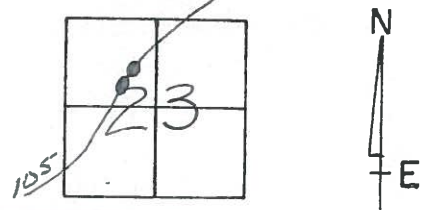
TYPE MONUMENT #8 PK & WASHER #9 PK & WASHER

~~CONC~~ SURFACE - BELOW 1 1/2" 1 1/2"

#8 9.5 LT #9 10.1 TO RT
LEFT - 0 PAV'T. - ~~RIGHT~~ 0.9 LT ON E
EDGE PAVEMENT

S.L.M. 28+40

30+91

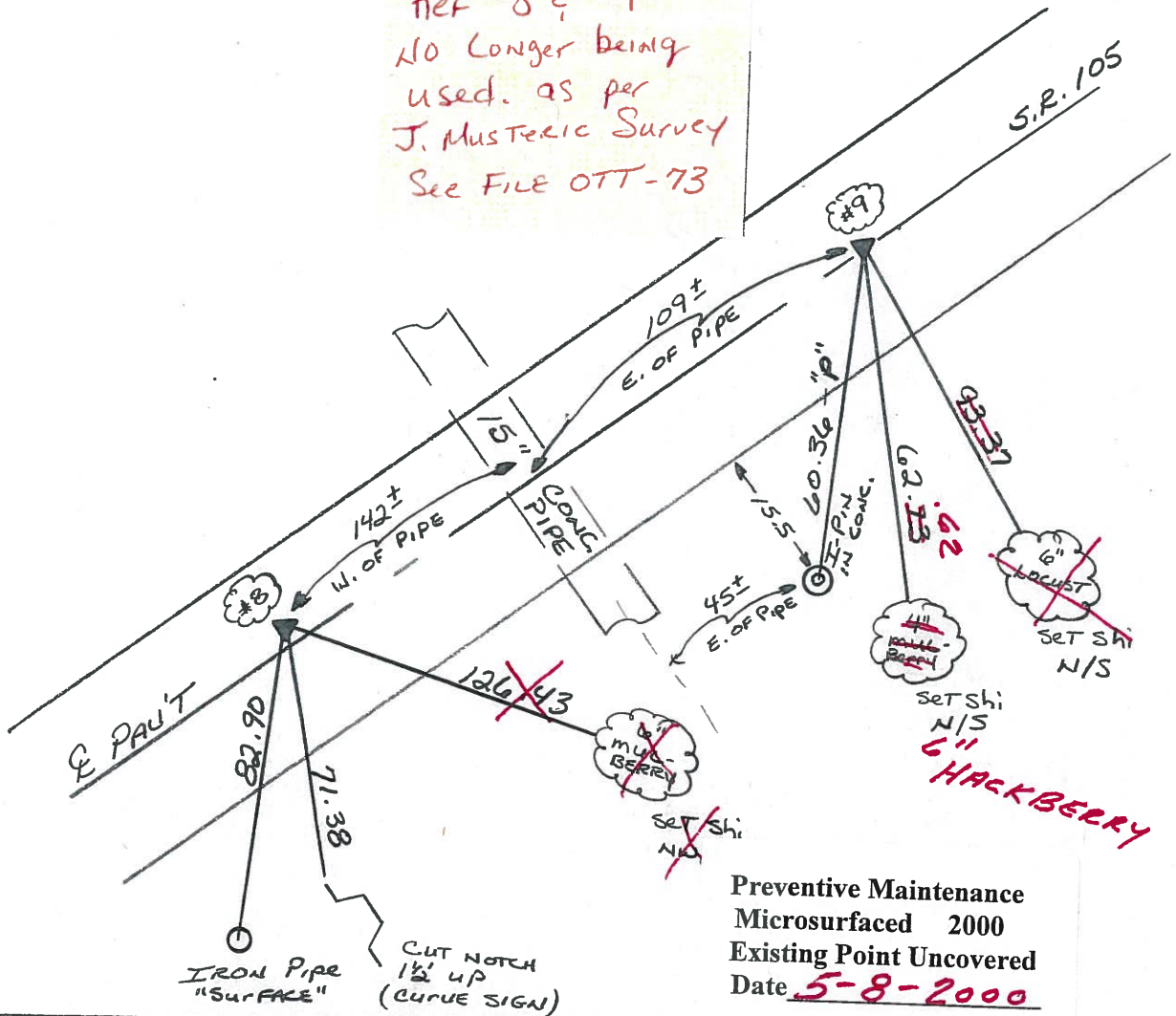


RECORD: #8 P.I.

RECORD: #9 P.I.

Reset PK'S & WASHERS
9-26-94
MB

REF #8 & #9
NO LONGER BEING
USED. AS PER
J. MUSTERIC SURVEY
SEE FILE OTT-73



Preventive Maintenance
Microsurfaced 2000
Existing Point Uncovered
Date 5-8-2000

PERSONNEL TITLE PERSONNEL TITLE

COUNTY Ottawa

DATE 8-5-74

S. R. 105

WEATHER Sunny

SEC 14 & 23

TEMP. 75°

DESCRIPTION

Harris Twp.

JOB NO.

