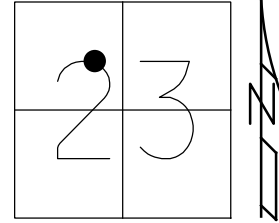


O.D.O.T. DISTRICT 2 SURVEY OFFICE (USE ONLY)

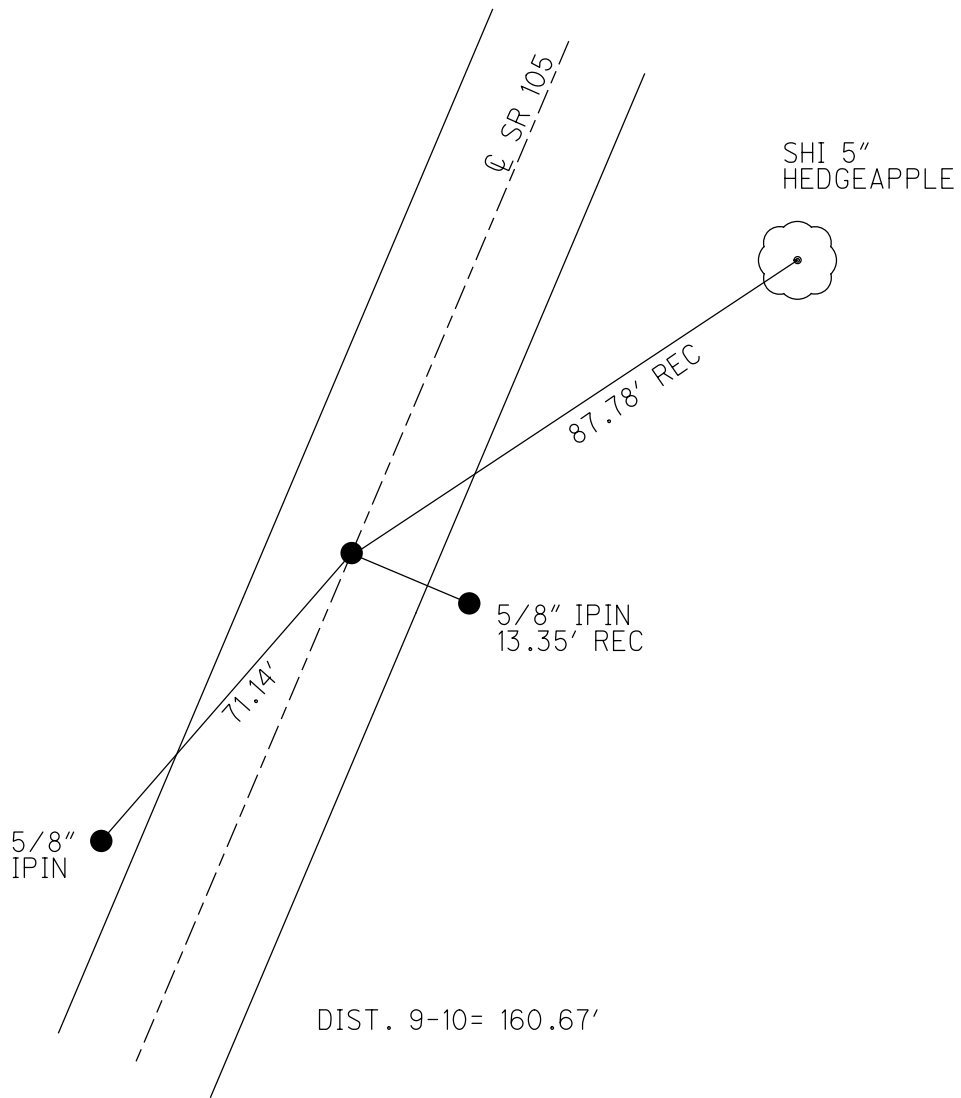
PERSONNEL \_\_\_\_\_ REFERENCE NO. 10 SHEET 11 OF 33  
 NOTES RHOADES DATE 7/20/21 ROUTE SR 105  
 H.C. O'DONNELL WEATHER CLEAR COUNTY OTTAWA  
 R.C. RHOADES TEMP. 75° TOWNSHIP HARRIS  
 SECTION 23  
 DWG BY RHOADES PID CHIP SEAL T 6 N R 13 E

TYPE MONUMENT MAG/WASHER  
 ON SURFACE - ~~BELOW~~ ON  
 OFFSET Q PAVEMENT ON LT : RT  
10.5' TO RT EDGE PAVEMENT  
 STATION: 32+52



HORZ. DATUM: NAD83 2011 GEOID: NAVD88 2018  
 GRID: NORTHING: 657488.331 EASTING: 1740366.175

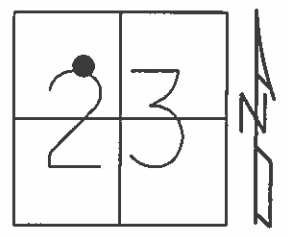
RECORD: P.I.  
 SET P.K./WASHER  
 9/28/94, MB  
 FD P.K./WASHER  
 OTTREF11  
 5/3/13, DCH  
 SET MAG/WASHER  
 FINREFOTT10  
 7/11/13, SDC  
 FD MAG/WASHER  
 REF10  
 7/20/21, JFO  
 10/20/21, JMR



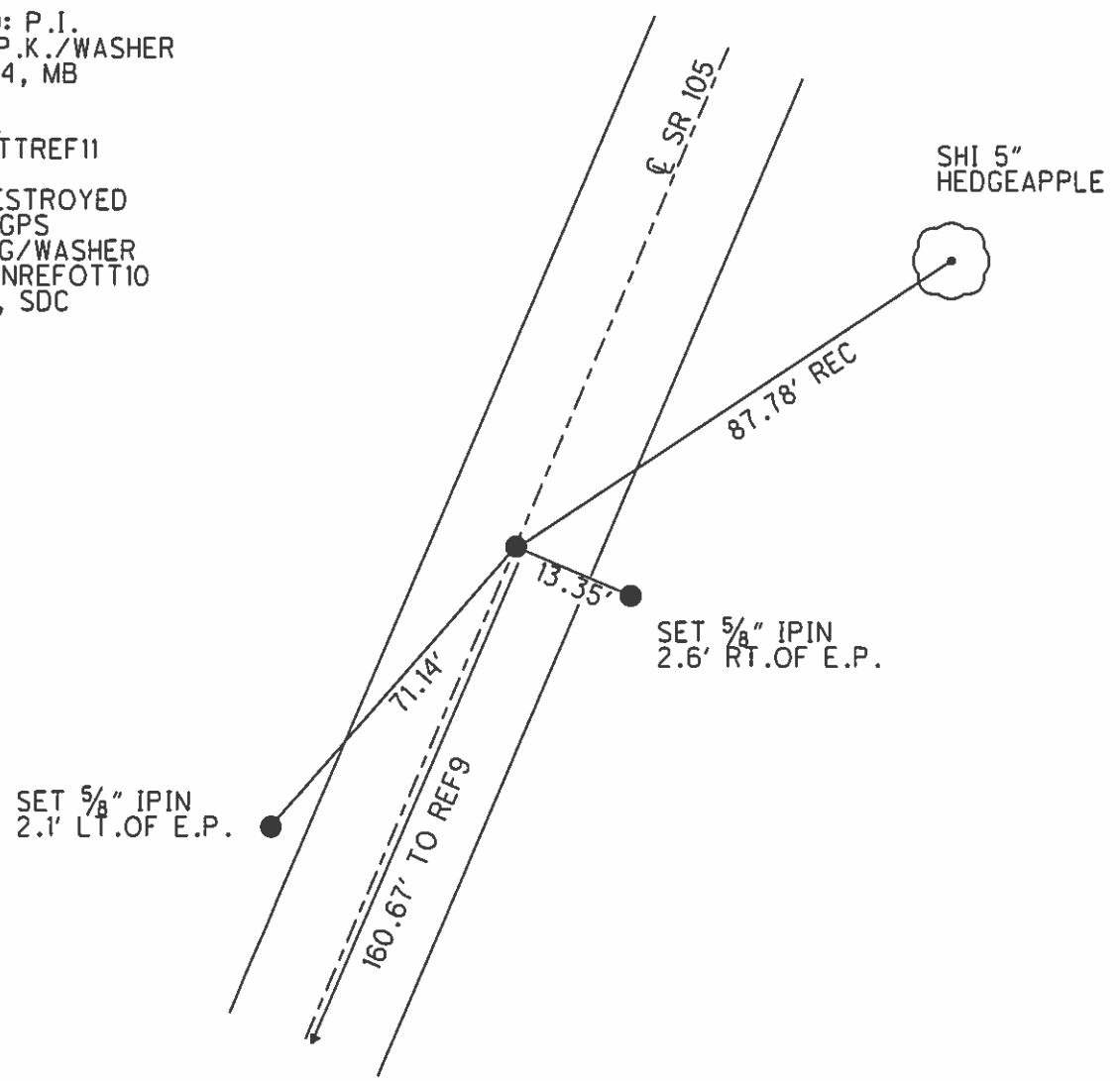
O.D.O.T. DISTRICT 2 SURVEY OFFICE (USE ONLY)

PERSONNEL	REFERENCE NO. <u>10</u>	SHEET <u>11</u> OF <u>33</u>
NOTES <u>RHOADES</u>	DATE <u>7/11/13</u>	ROUTE <u>SR 105</u>
H.C. <u>CODER</u>	WEATHER <u>SUNNY</u>	COUNTY <u>OTTAWA</u>
R.C. <u>RHOADES</u>	TEMP. <u>75°</u>	TOWNSHIP <u>HARRIS</u>
		SECTION <u>23</u>
		T <u>6</u> N R <u>13</u> E

TYPE MONUMENT P.K./WASHER  
 ON SURFACE - ~~BELOW~~ ON  
 LEFT - CL PAV'T - RIGHT ON  
10.5' TO RT EDGE PAVEMENT  
 S.L.M. 32+52  
 Grid: Northing: 657488.366 Easting: 1740366.083



RECORD: P.I.  
 RESET P.K./WASHER  
 9/28/94, MB  
 FD P.K.  
 GPS, OTTREF11  
 TIES DESTROYED  
 SET W/GPS  
 SET MAG/WASHER  
 GPS, FINREFOTT10  
 7/11/13, SDC



O.D.O.T. DISTRICT 2 SURVEY OFFICE

PERSONNEL

REFERENCE NO. 10

SHEET 7 OF 26

NOTES BARNHISEL

H.C. CORDES

R.C. SLOUAK

DATE 9-28-94

WEATHER SUNNY - WINDY

TEMP. +55°

ROUTE 105

COUNTY OTTAWA

TOWNSHIP HARRIS

SECTION 23

T6 N R 13 E

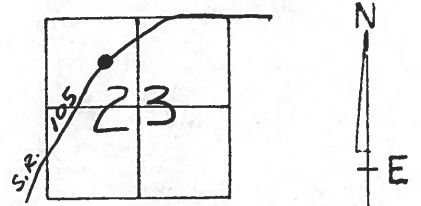
TYPE MONUMENT BOLT SPK & WASHER

~~ON SURFACE~~ - BELOW 3"

~~EXT - E PAV'T. - DIST~~ yes

10.5 TO RT EDGE PAVEMENT

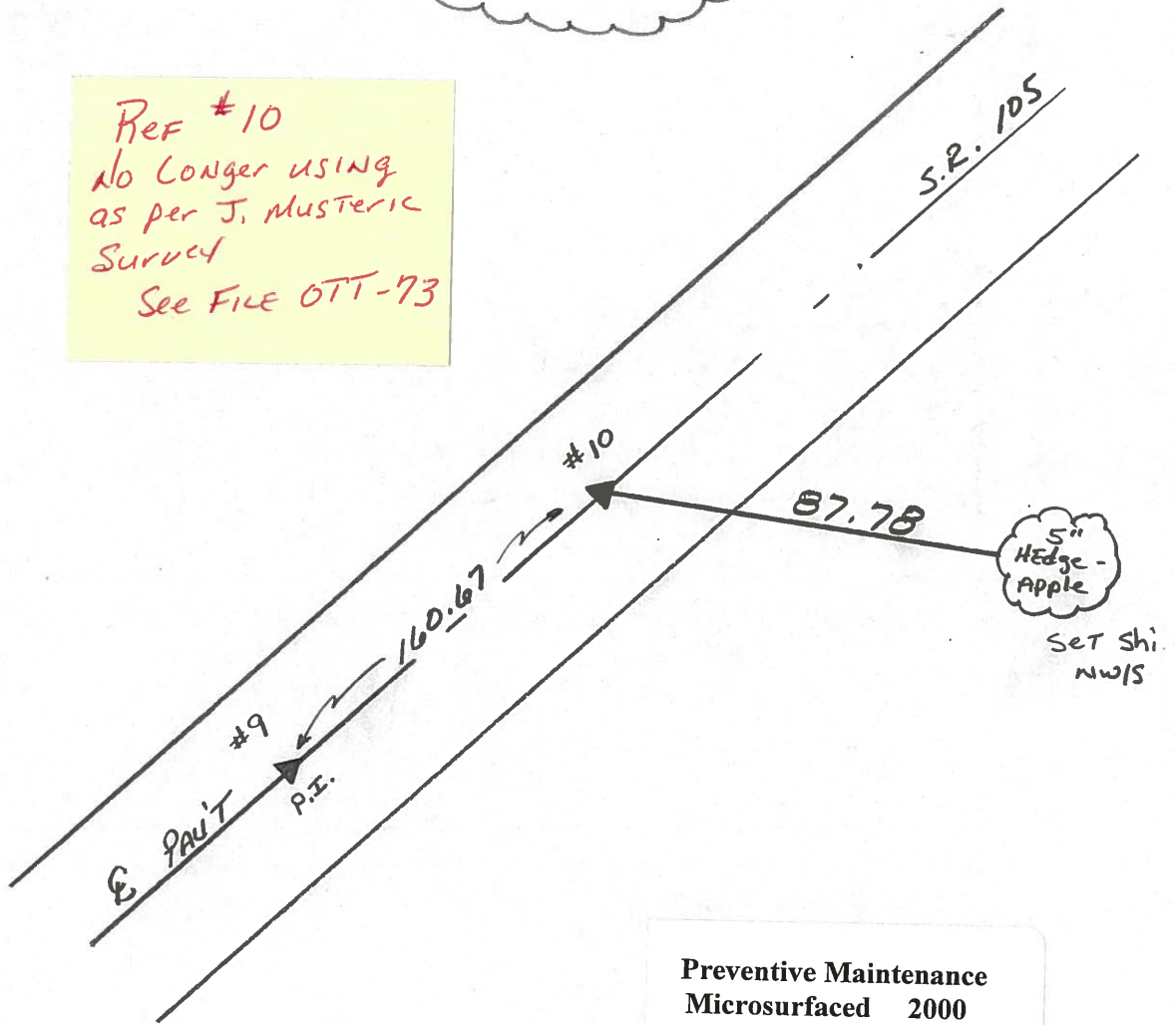
S.L.M. 32+52



RECORD : #10 = P.I.

Reset P.K. & Washer  
9-28-94  
M.B.

Ref #10  
no longer using  
as per J. MUSTERIC  
Survey  
See FILE OTT-73



Preventive Maintenance  
Microsurfaced 2000  
Existing Point Uncovered  
Date 5-8-2000



PERSONNEL TITLE PERSONNEL TITLE

COUNTY Ottawa

DATE 8-5-74

S. R. 105

WEATHER Sunny

SEC 14 & 23

TEMP. 75°

DESCRIPTION

Harris Twp.

JOB NO.

