

O.D.O.T. DISTRICT 2 SURVEY OFFICE (USE ONLY)

PERSONNEL

REFERENCE NO. 11

SHEET 12 OF 33

NOTES HOMAN

DATE 5/3/13

ROUTE SR 105

H.C. HOMAN

WEATHER CLOUDY

COUNTY OTTAWA

R.C. ROUSOS

TEMP. 65°

TOWNSHIP HARRIS

SECTION 23

DWG BY RHOADES PID 25524

T 6 N R 13 E

TYPE MONUMENT IPIPE

~~ON SURFACE~~ - BELOW 2"

OFFSET  $\odot$  PAVEMENT 16.8' LT : ~~RT~~

6.8' LT TO LT EDGE PAVEMENT

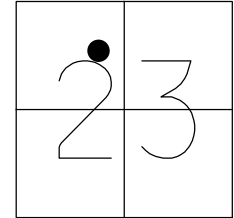
STATION: 34+75

HORIZ.DATUM: NAD83 2011

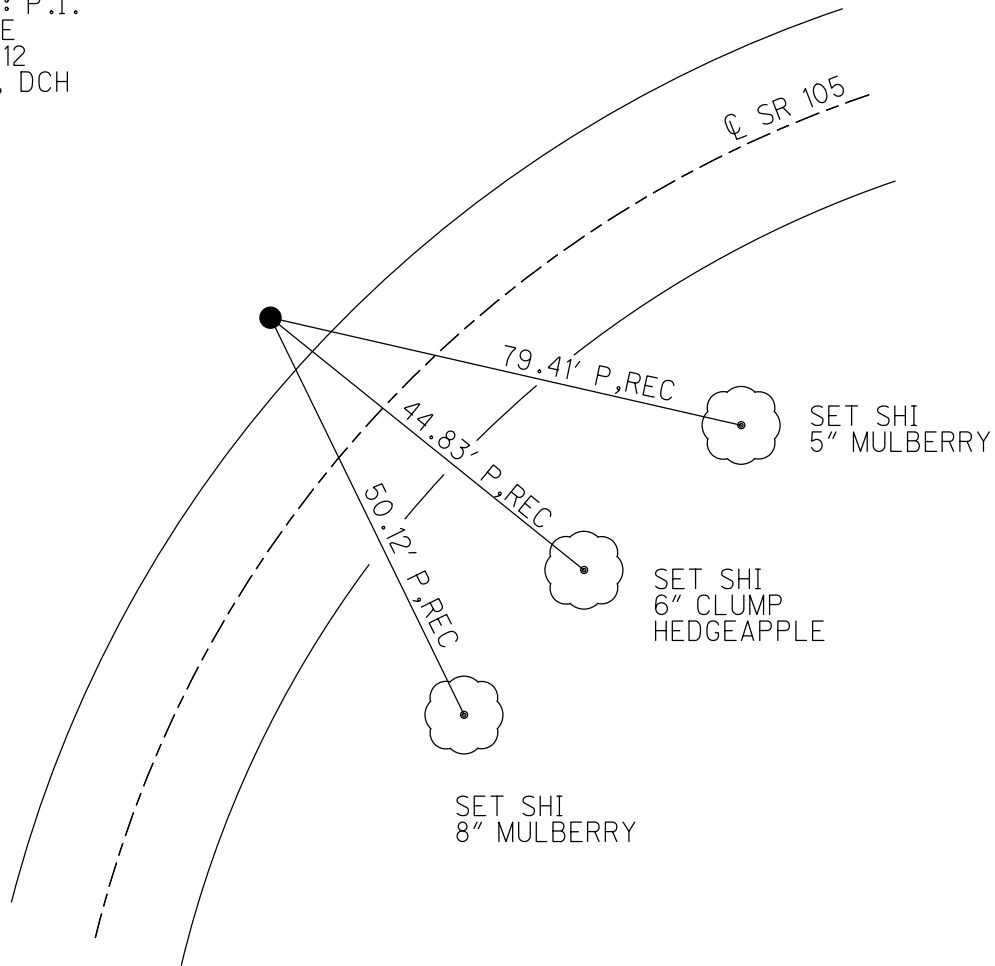
GEOID: NAVD88 2012A

GRID: NORTHING: 657679.792

EASTING: 1740485.803



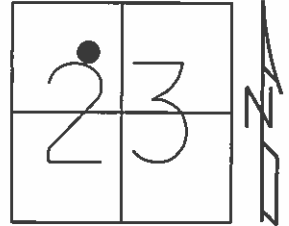
RECORD: P.I.  
FD IPIPE  
OTTREF12  
5/3/13, DCH



O.D.O.T. DISTRICT 2 SURVEY OFFICE (USE ONLY)

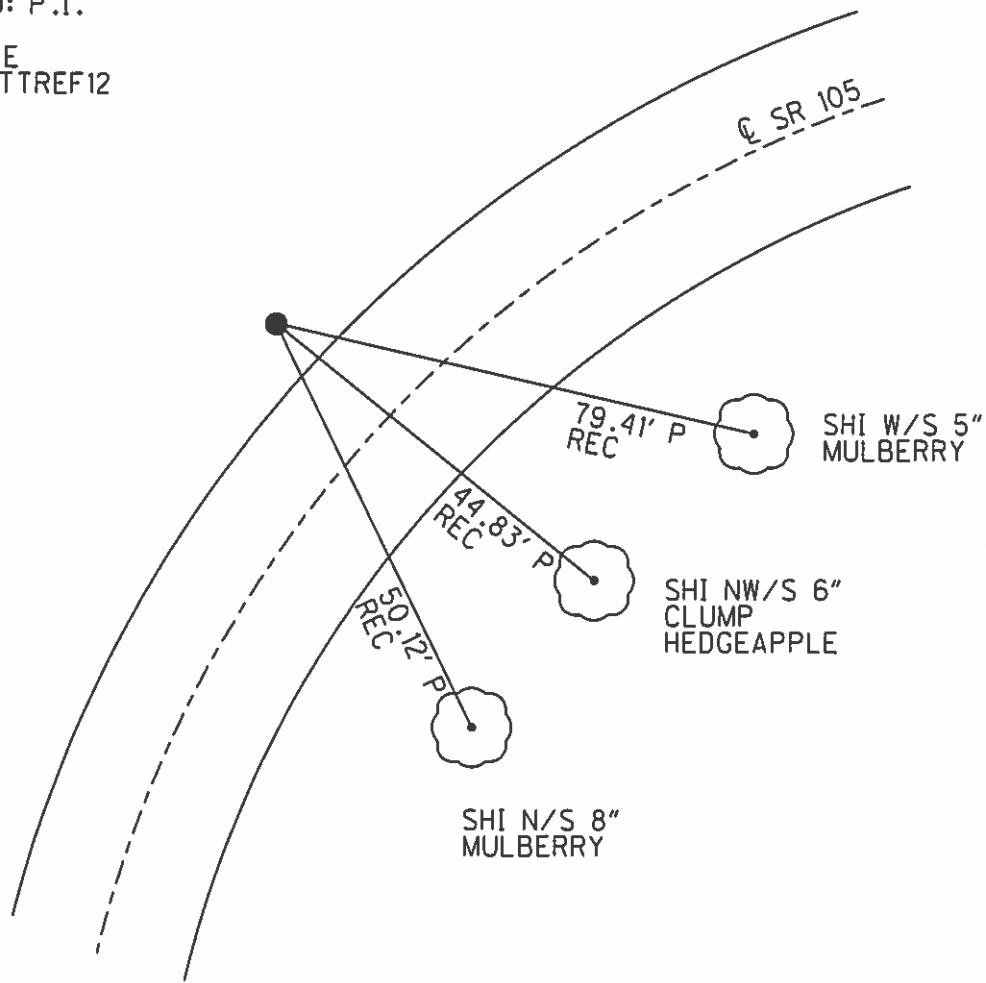
PERSONNEL \_\_\_\_\_ REFERENCE NO. 11 SHEET 12 OF 33  
 NOTES HOMAN DATE 5/3/13 ROUTE SR 105  
 H.C. HOMAN WEATHER CLOUDY COUNTY OTTAWA  
 R.C. ROUSOS TEMP. 65° TOWNSHIP HARRIS  
 \_\_\_\_\_ SECTION 23  
 \_\_\_\_\_ T 6 N R 13 E

TYPE MONUMENT IPIPE  
~~ON SURFACE~~ - BELOW 2"  
 LEFT - Q PAV'T - ~~RIGHT~~ 16.8'  
6.8' TO LT EDGE PAVEMENT  
 S.L.M. 34+75



Grid: Northing: 657679.792 Easting: 1740485.803

RECORD: P.I.  
 FD IPIPE  
 GPS, OTTREF12



O.D.O.T. DISTRICT 2 SURVEY OFFICE

PERSONNEL \_\_\_\_\_

REFERENCE NO. 11

SHEET 8 OF 26

NOTES BARNHISEL

H.C. CORDS

R.C. SLOVAK

DATE 9-28-94

WEATHER Sunny - Windy

TEMP. +55°

ROUTE 105

COUNTY OTTAWA

TOWNSHIP HARRIS

SECTION 23

T6 NR 13 E

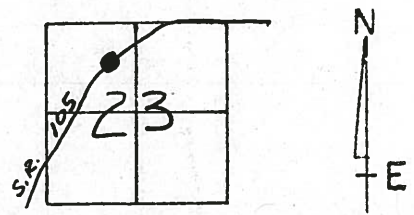
TYPE MONUMENT IRON PIPE

~~ON~~ SURFACE - BELOW 2"

LEFT-C PAV'T. - ~~RIGHT~~ 16.8

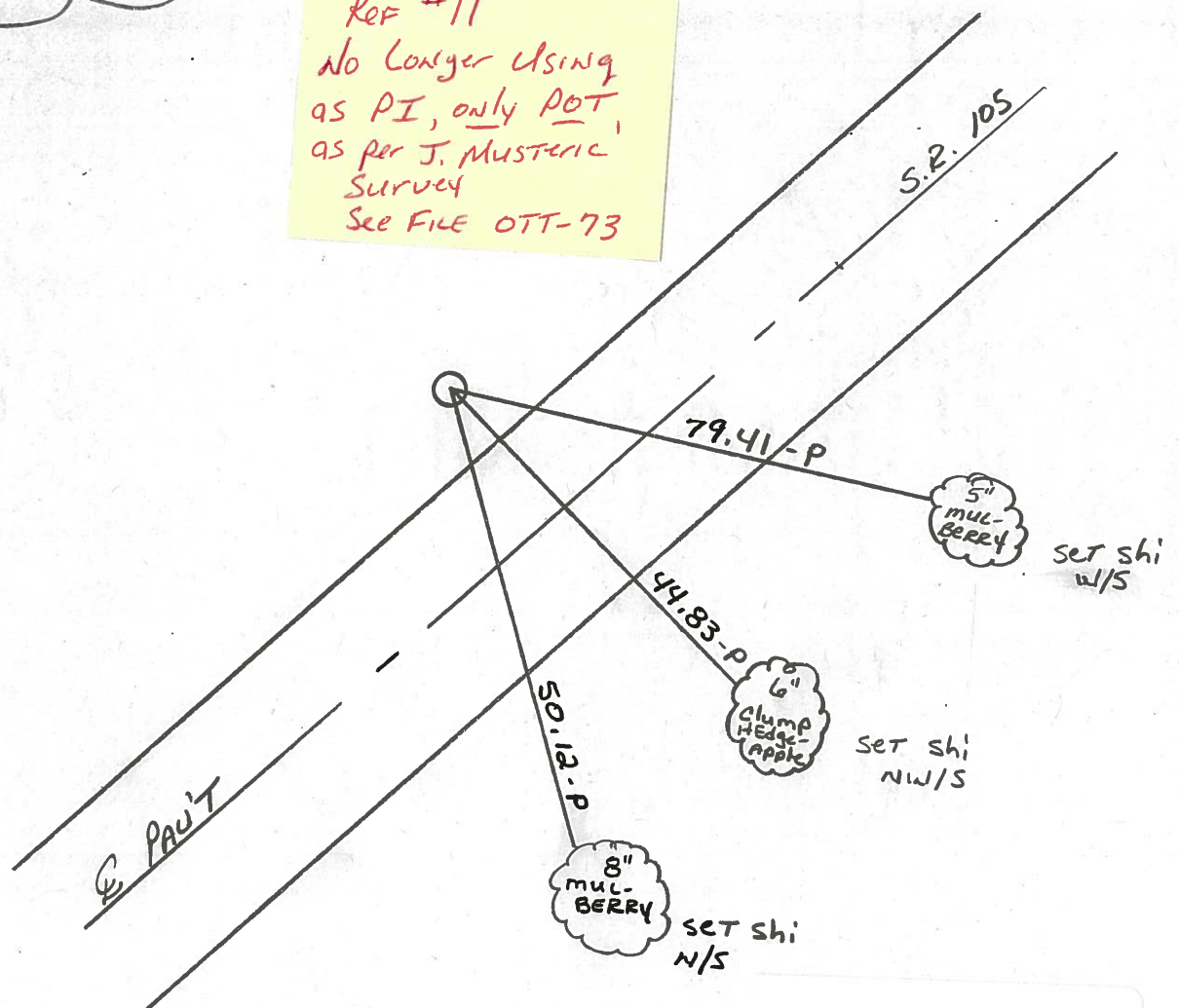
6.8 <sup>OF</sup> ~~TO~~ LT EDGE PAVEMENT

S.L.M. 34+75



Record : P.I.

*Ref #11  
no longer using  
as PI, only POT,  
as per J. Musteric  
Survey  
See File OTT-73*



Preventive Maintenance  
Microsurfaced 2000  
Existing Point Uncovered  
Date 5-8-2000