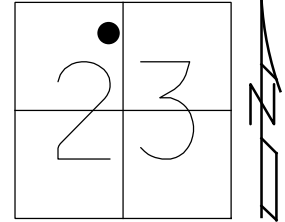


O.D.O.T. DISTRICT 2 SURVEY OFFICE (USE ONLY)

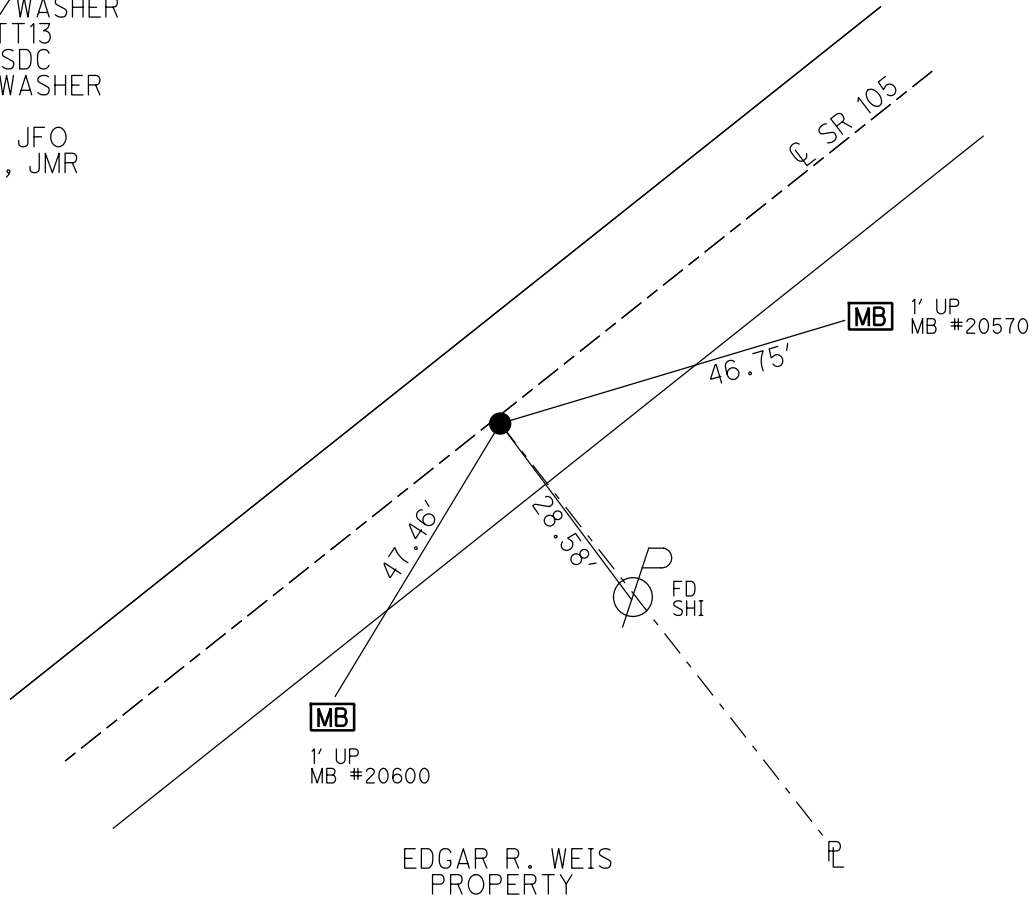
PERSONNEL _____ REFERENCE NO. 13 SHEET 15 OF 33
 NOTES RHOADES DATE 7/20/21 ROUTE SR 105
 H.C. O'DONNELL WEATHER SUNNY COUNTY OTTAWA
 R.C. RHOADES TEMP. 80° TOWNSHIP HARRIS
 DWG BY RHOADES PID CHIP SEAL SECTION 23
 T 6 N R 13 E

TYPE MONUMENT MAG/WASHER
 ON SURFACE - ~~BELOW~~ ON _____
 OFFSET 0.6' RT : RT
9.6' TO RT EDGE PAVEMENT
 STATION: 40+75



HORZ.DATUM: NAD83 2011 GEOID: NAVD88 2018
 GRID: NORTHING: 658033.740 EASTING: 1740973.566

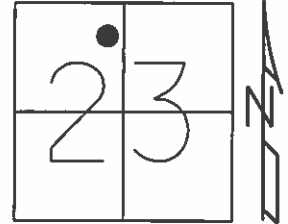
RECORD: P.O.T.
 SET P.K./WASHER
 9/28/94, MB
 FD P.K.NAIL
 OTTREF14
 5/3/13, DCH
 SET MAG/WASHER
 FINREFOTT13
 7/11/13, SDC
 FD MAG/WASHER
 REF13
 7/20/21, JFO
 10/20/21, JMR



O.D.O.T. DISTRICT 2 SURVEY OFFICE (USE ONLY)

PERSONNEL _____	REFERENCE NO. <u>13</u>	SHEET <u>15</u> OF <u>33</u>
NOTES <u>HOMAN</u>	DATE <u>5/3/13</u>	ROUTE <u>SR 105</u>
H.C. <u>HOMAN</u>	WEATHER <u>CLOUDY</u>	COUNTY <u>OTTAWA</u>
R.C. <u>ROUSOS</u>	TEMP. <u>65°</u>	TOWNSHIP <u>HARRIS</u>
_____	_____	SECTION <u>23</u>
_____	_____	T <u>6</u> N R <u>13</u> E

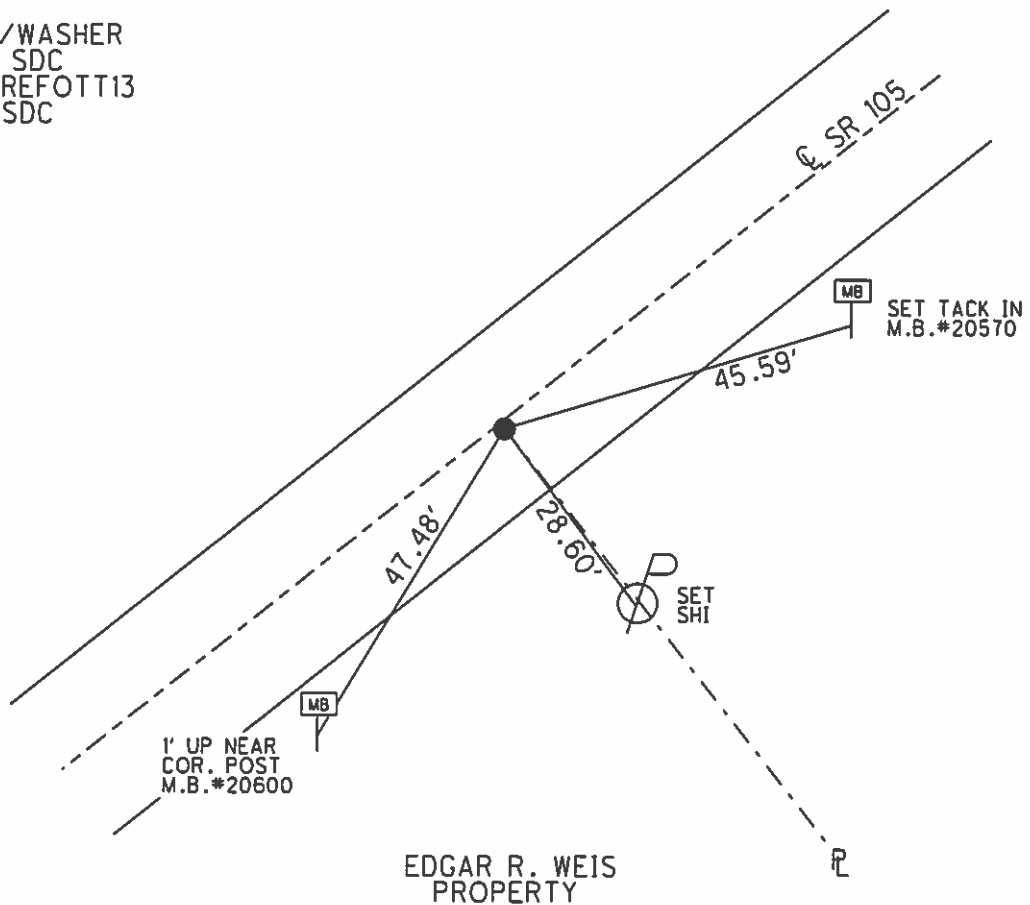
TYPE MONUMENT P.K.NAIL
 ON SURFACE - ~~BELOW~~ ON
~~LEFT~~ - C PAV'T - RIGHT 0.6'
9.6' TO RT EDGE PAVEMENT
 S.L.M. 40+75
 Grid: Northing: 658033.847 Easting: 1740973.642



RECORD: P.O.T.
 RESET P.K./WASHER
 9/28/94, MB

FD P.K.
 GPS, OTTREF14

SET MAG/WASHER
 7/10/13, SDC
 GPS, FINREFOTT13
 7/11/13, SDC



O.D.O.T. DISTRICT 2 SURVEY OFFICE

PERSONNEL

REFERENCE NO. 13

SHEET 10 OF 26

NOTES BARNHISEL

H.C. CORDES

R.C. SLOUAK

DATE 9-28-94

WEATHER SUNNY - WINDY

TEMP. +55°

ROUTE 105

COUNTY OTTAWA

TOWNSHIP HARRIS

SECTION 23

T6 NR 13 E

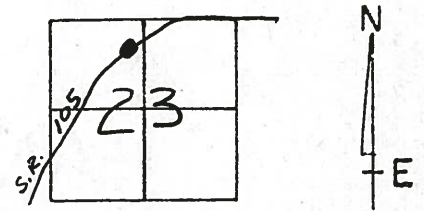
TYPE MONUMENT P.K. NAIL

~~ON SURFACE~~ - BELOW 6"

~~1.6 TO~~ - E PAV'T. - RIGHT 0.6

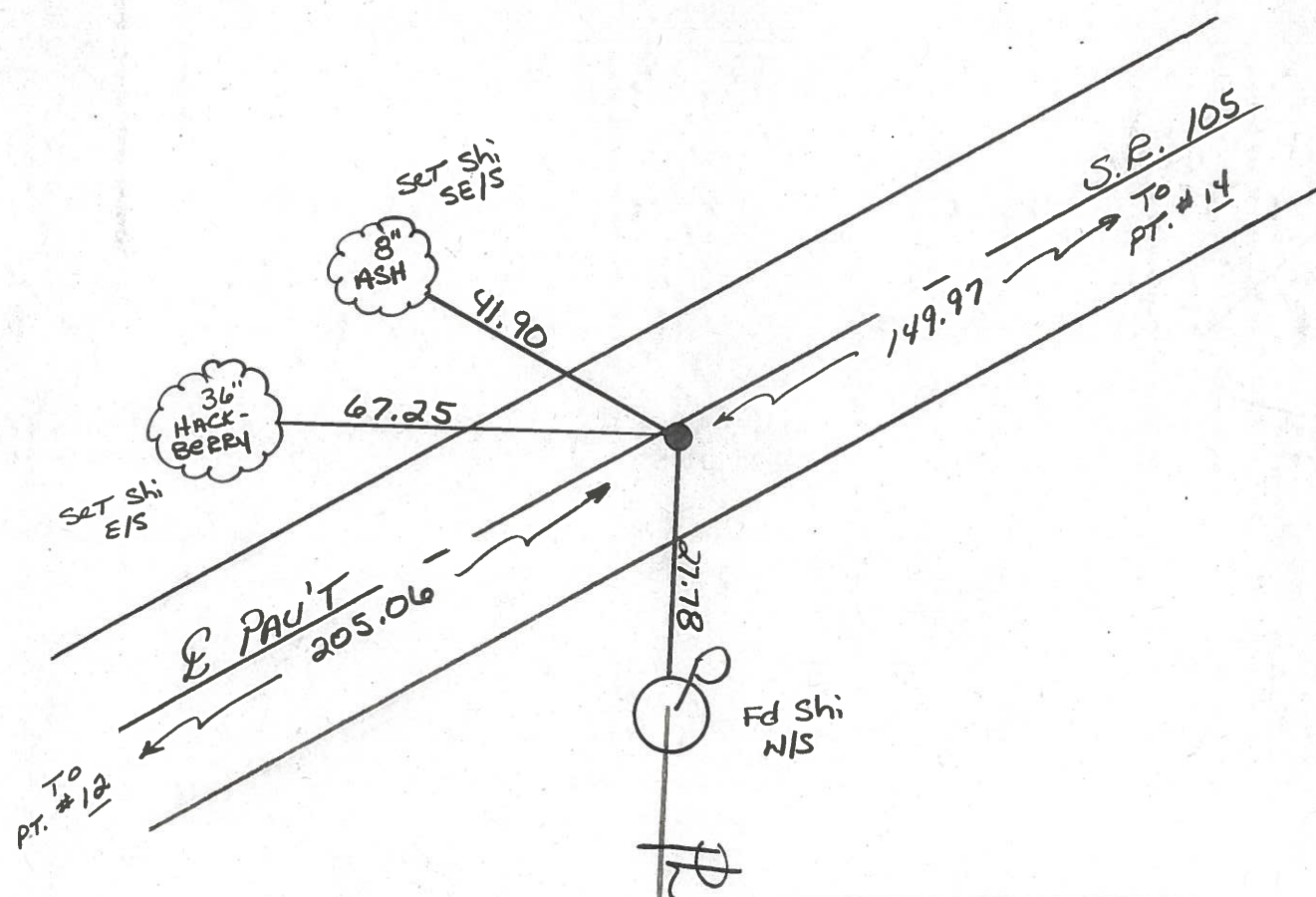
9.6 TO RT EDGE PAVEMENT

S.L.M. 40+75



RECORD: P.O.T.

Reset P.K. & WASHER
9-28-94
m.B.



Edgar R. Weis
PROPERTY

Preventive Maintenance
Microsurfaced 2000
Existing Point Uncovered
Date 5-8-2000

PERSONNEL TITLE PERSONNEL TITLE

COUNTY O'Hawa

DATE 8-5-74

S. R. 105

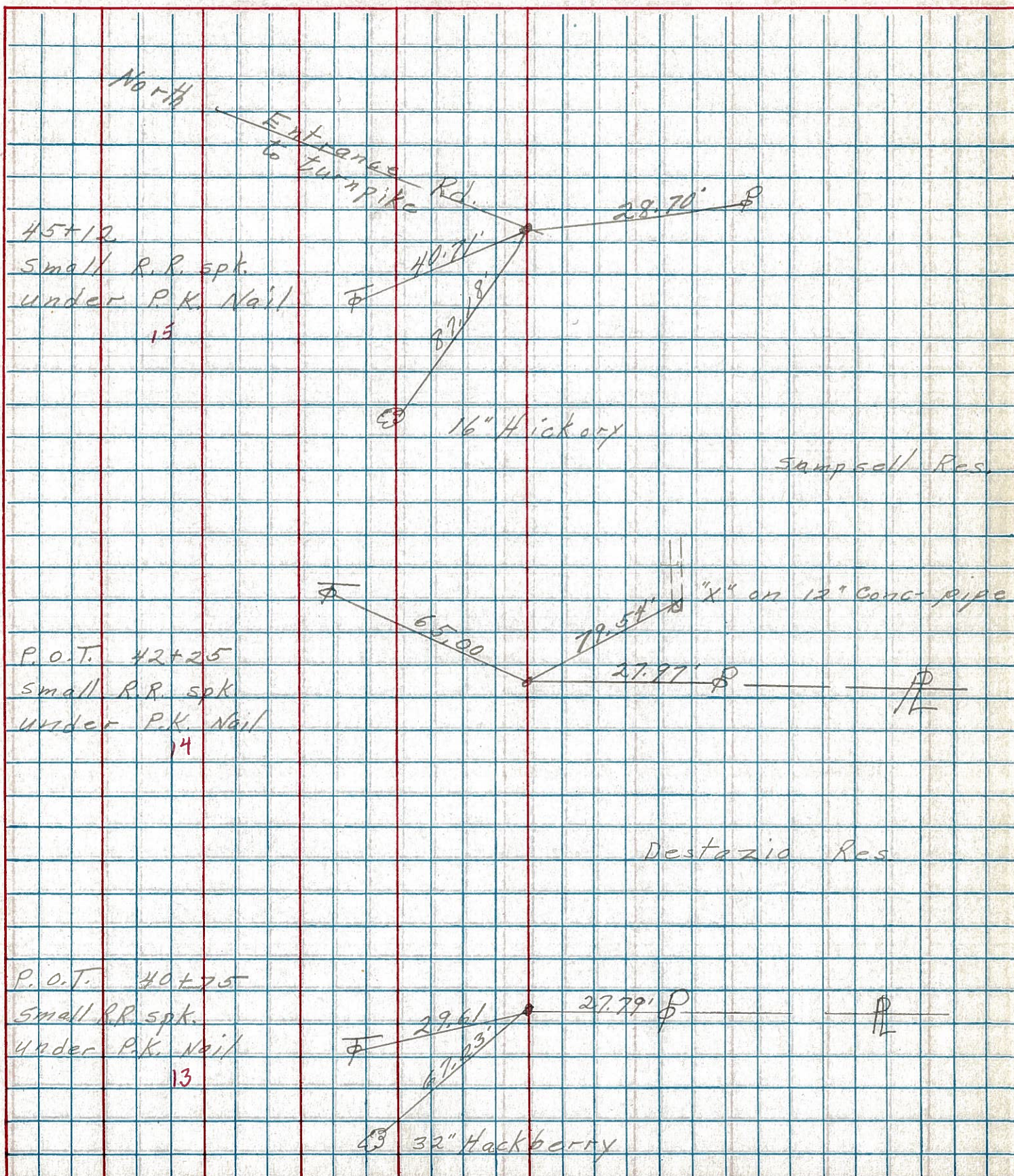
WEATHER Fair

SEC. 14 23

TEMP. 75°

DESCRIPTION Harris Twp

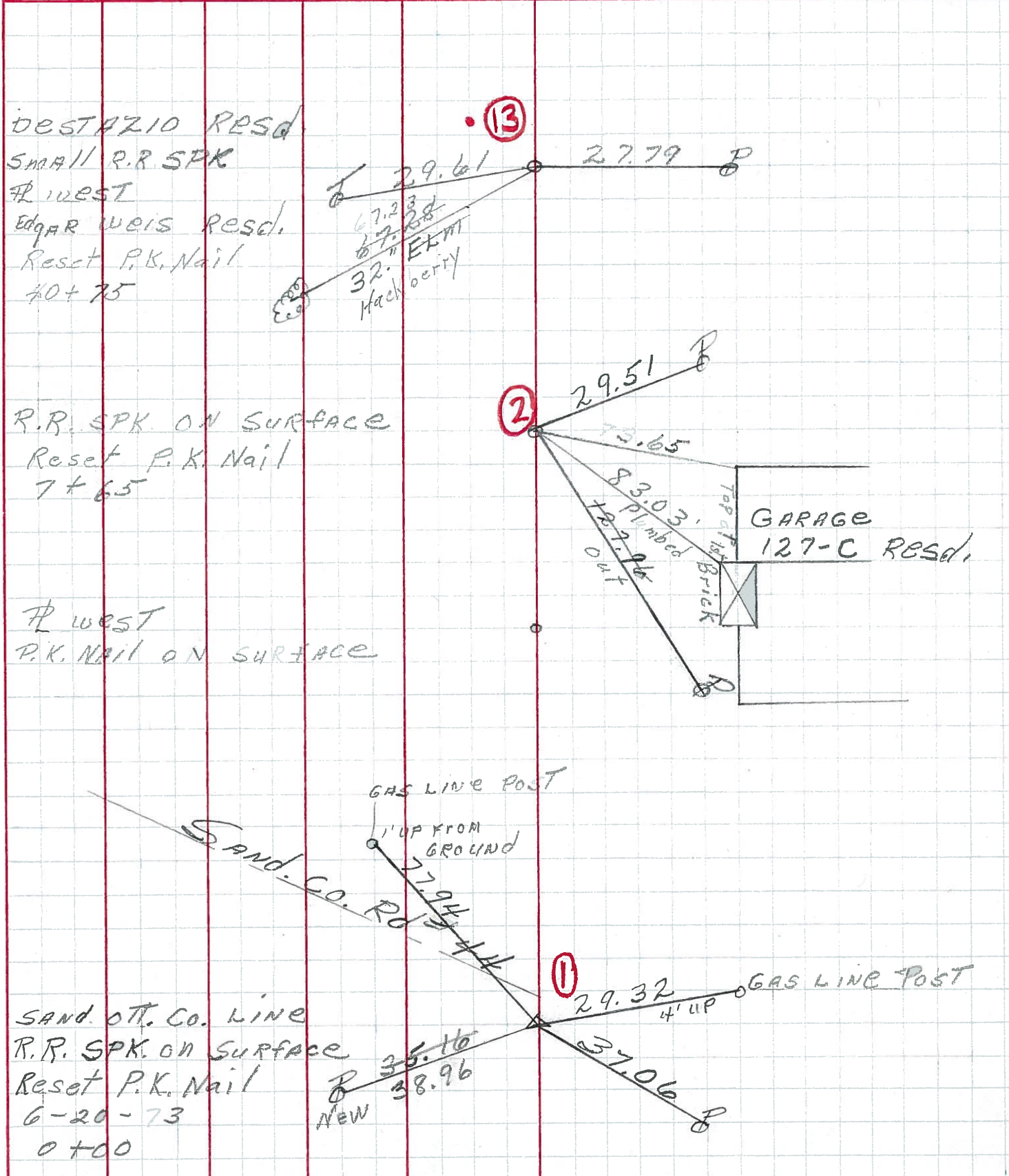
JOB NO.



PERSONNEL	TITLE	PERSONNEL	TITLE
MOSSEY			
BARBAUR			
GEVLIAN			
VINSON			

COUNTY OTTAWA WEATHER SUNNY
 S. R. 105 TEMP 65°
 SEC. OTT. CO. LINE TO HARBOUR DAK

DESCRIPTION TIES FOR CONTROL TIES JOB NO. _____
 LEFT CENTER LINE RIGHT



PERSONNEL	TITLE	PERSONNEL	TITLE	COUNTY	Ottawa	DATE	6-29-61
Schneider				S. R.	105	WEATHER	cloudy
Barbour				SEC.	Oak Harbor San. Co. Line G	TEMP.	75°
Redding							

DESCRIPTION Ties for Control Points JOB NO. _____

