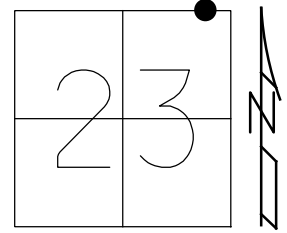


O.D.O.T. DISTRICT 2 SURVEY OFFICE (USE ONLY)

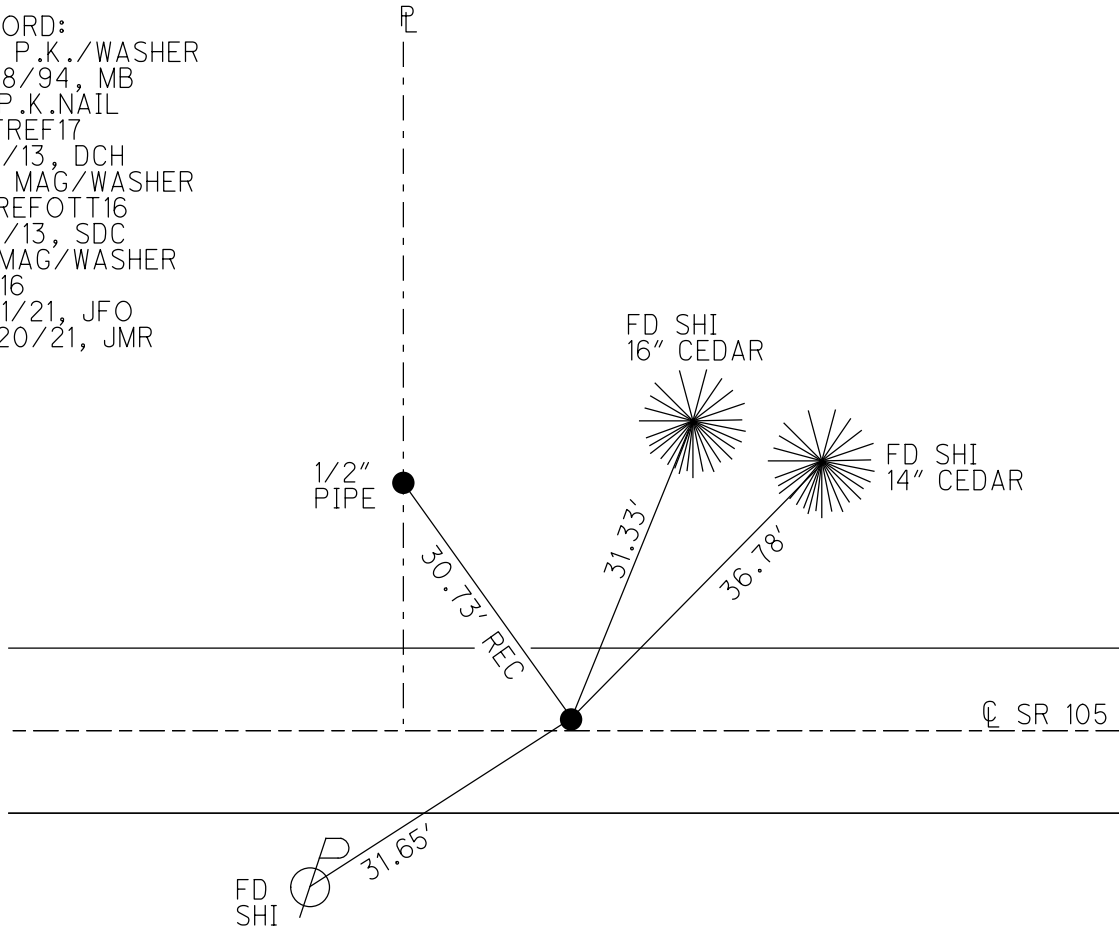
PERSONNEL \_\_\_\_\_ REFERENCE NO. 16 SHEET 18 OF 33  
 NOTES RHOADES DATE 7/21/21 ROUTE SR 105  
 H.C. O'DONNELL WEATHER CLOUDY COUNTY OTTAWA  
 R.C. RHOADES TEMP. 65° TOWNSHIP HARRIS  
 SECTION 23  
 DWG BY RHOADES PID CHIP SEAL T 6 N R 13 E

TYPE MONUMENT MAG/WASHER  
 ON SURFACE - ~~BELOW~~ ON \_\_\_\_\_  
 OFFSET Q PAVEMENT 1.2' LT : ~~RT~~  
8.8' TO LT EDGE PAVEMENT  
 STATION: 71+76



HORZ.DATUM: NAD83 2011 GEOID: NAVD88 2018  
 GRID: NORTHING: 658935.140 EASTING: 1743813.989

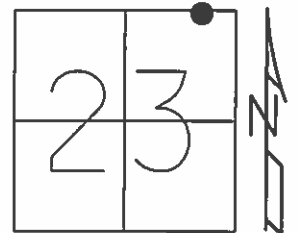
RECORD:  
 SET P.K./WASHER  
 9/28/94, MB  
 FD P.K.NAIL  
 OTTREF17  
 5/3/13, DCH  
 SET MAG/WASHER  
 FINREFOTT16  
 7/11/13, SDC  
 FD MAG/WASHER  
 REF16  
 7/21/21, JFO  
 10/20/21, JMR



O.D.O.T. DISTRICT 2 SURVEY OFFICE (USE ONLY)

PERSONNEL	REFERENCE NO. <u>16</u>	SHEET <u>18</u> OF <u>33</u>
NOTES <u>HOMAN</u>	DATE <u>5/3/13</u>	ROUTE <u>SR 105</u>
H.C. <u>HOMAN</u>	WEATHER <u>CLOUDY</u>	COUNTY <u>OTTAWA</u>
R.C. <u>ROUSOS</u>	TEMP. <u>65°</u>	TOWNSHIP <u>HARRIS</u>
		SECTION <u>23</u>
		T <u>6</u> N R <u>13</u> E

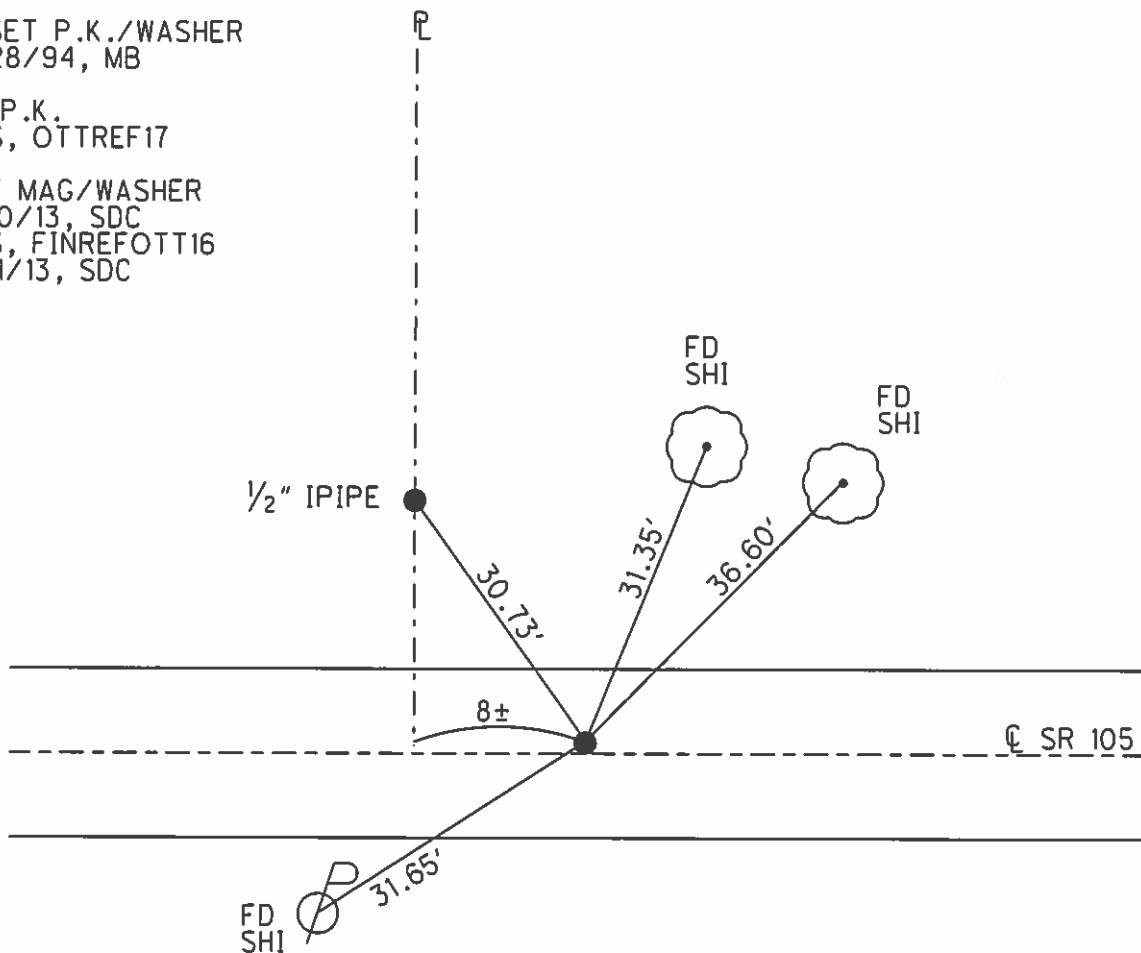
TYPE MONUMENT P.K.NAIL  
 ON SURFACE - ~~BELOW~~ ON  
 LEFT - ℄ PAV'T - ~~RIGHT~~ 1.2'  
8.8' TO LT EDGE PAVEMENT  
 S.L.M. 71+76  
 Grid: Northing: 658935.196 Easting: 1743813.843



RESET P.K./WASHER  
 9/28/94, MB

FD P.K.  
 GPS, OTTREF17

SET MAG/WASHER  
 7/10/13, SDC  
 GPS, FINREFOTT16  
 7/11/13, SDC



# O.D.O.T. DISTRICT 2 SURVEY OFFICE

PERSONNEL

REFERENCE NO. 16

SHEET 13 OF 26

NOTES BARNHISEL

H.C. CORDS

R.C. SLOVAK

DATE 9-28-94

WEATHER SUNNY - WINDY

TEMP. +55°

ROUTE 105

COUNTY OTTAWA

TOWNSHIP HARRIS

SECTION 23

T6 N R 13 E

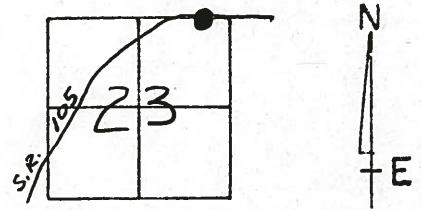
TYPE MONUMENT P.K. NAIL

~~ON SURFACE~~ - BELOW 4"

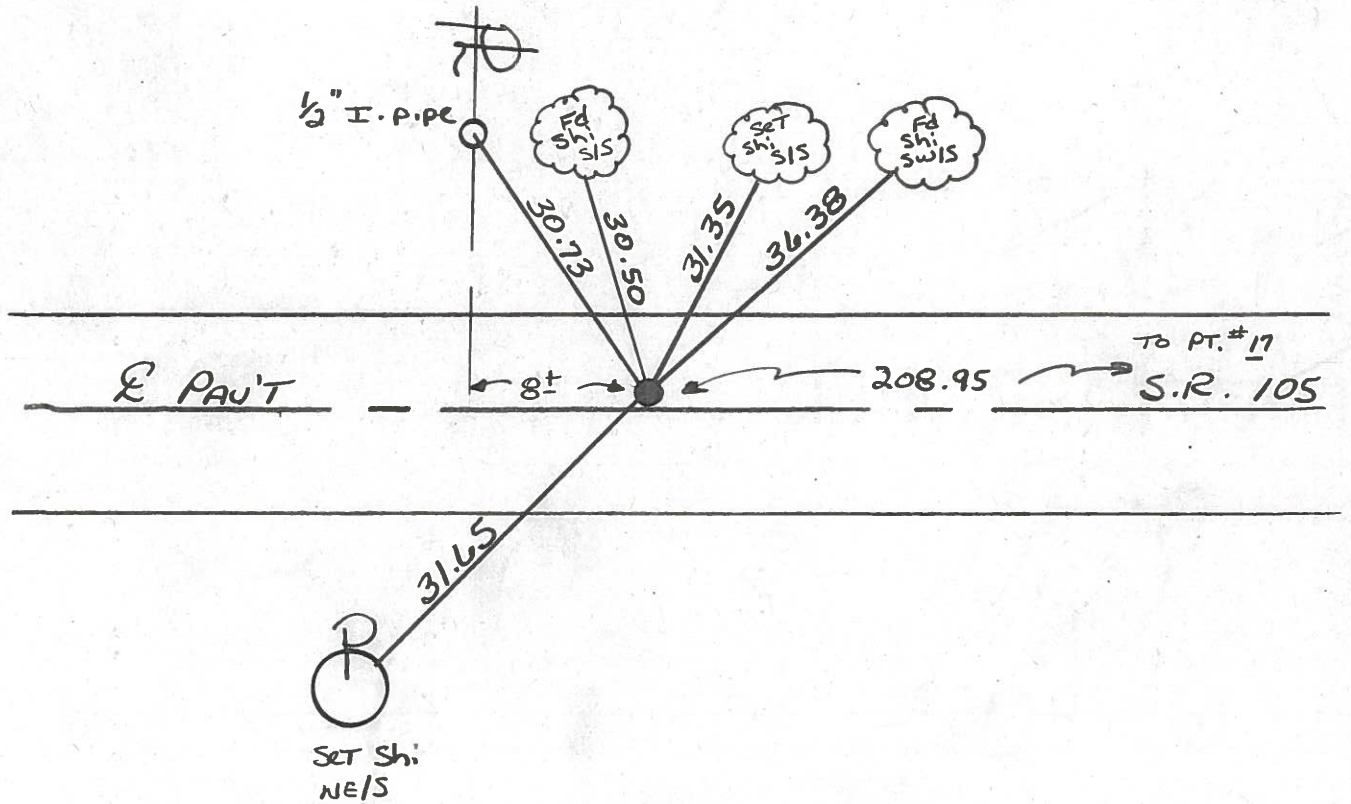
LEFT - C PAV'T. - ~~RESET~~ 1.2

8.8 TO LT EDGE PAVEMENT

S.L.M. 71+76



RESET P.K. & WASHER  
 9-28-94  
 M.B.

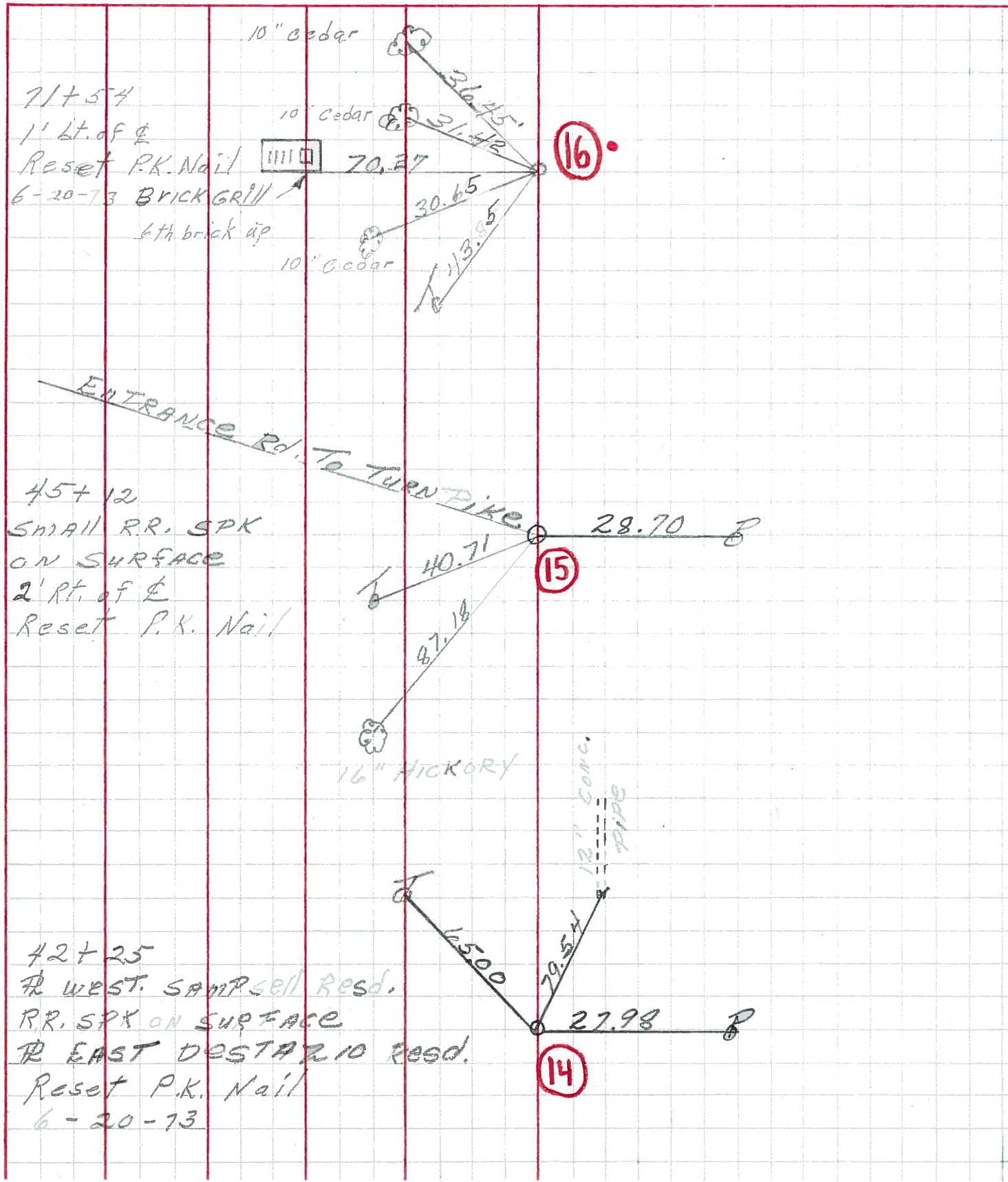


Preventive Maintenance  
 Microsurfaced 2000  
 Existing Point Uncovered  
 Date 5-8-2000

PERSONNEL	TITLE	PERSONNEL	TITLE
MOSSER			
BARBOUR			
GEYMAN			
VINSON			

COUNTY OTT. DATE 8-18-71  
 S. R. 105 WEATHER SUNNY  
 SEC. OTT. CO. LINE TO HARBOUR OAK TEMP. 65°

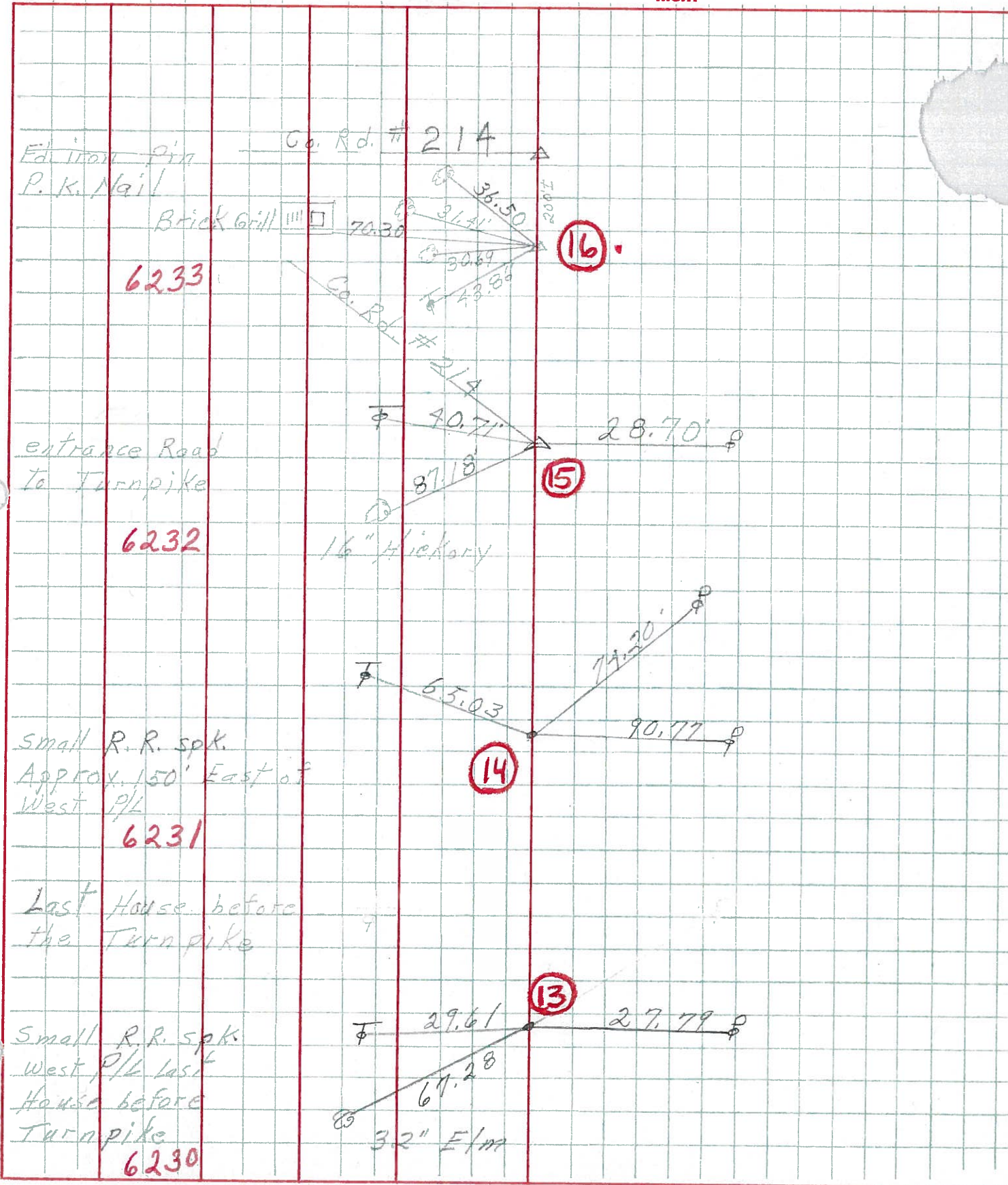
DESCRIPTION TIES FOR CONTROL TIES JOB NO. \_\_\_\_\_





PERSONNEL	TITLE	PERSONNEL	TITLE	COUNTY	<u>Ottawa</u>	DATE	<u>6-24-6</u>
<u>Schneider</u>				S. R.	<u>105</u>	WEATHER	<u>Cloudy</u>
<u>Barbary</u>				SEC.	<u>Oak Harbor</u>	TEMP.	<u>75°</u>
<u>Redding</u>					<u>San. Co. Line G</u>		

DESCRIPTION Ties for Control Points JOB NO. \_\_\_\_\_



6233

6232

6231

6230



PERSONNEL TITLE PERSONNEL TITLE

COUNTY Ottawa DATE 8-6-74

S. R. 105 WEATHER Sunny

SEC. 14 & 23 TEMP. 80°

DESCRIPTION Harris Twp. LEFT CENTER LINE RIGHT JOB NO.

