

O.D.O.T. DISTRICT 2 SURVEY OFFICE (USE ONLY)

PERSONNEL

REFERENCE NO. 17

SHEET 19 OF 33

NOTES RHOADES DATE 7/21/21
 H.C. O'DONNELL WEATHER CLOUDY
 R.C. RHOADES TEMP. 65°

ROUTE SR 105
 COUNTY OTTAWA
 TOWNSHIP HARRIS
 SECTION 13
 T 6 N R 13 E

DWG BY RHOADES PID CHIP SEAL

TYPE MONUMENT MONBOX W/ SQ.TOP 5/8" IPIN

ON SURFACE - ~~BELOW~~ ON _____

OFFSET \varnothing PAVEMENT 2.4' LT : ~~RT~~

12.3' TO RT EDGE PAVEMENT

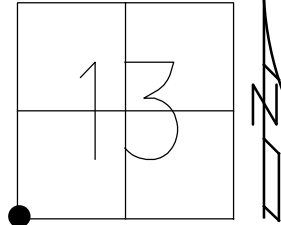
STATION: 73+85

HORZ.DATUM: NAD83 2011

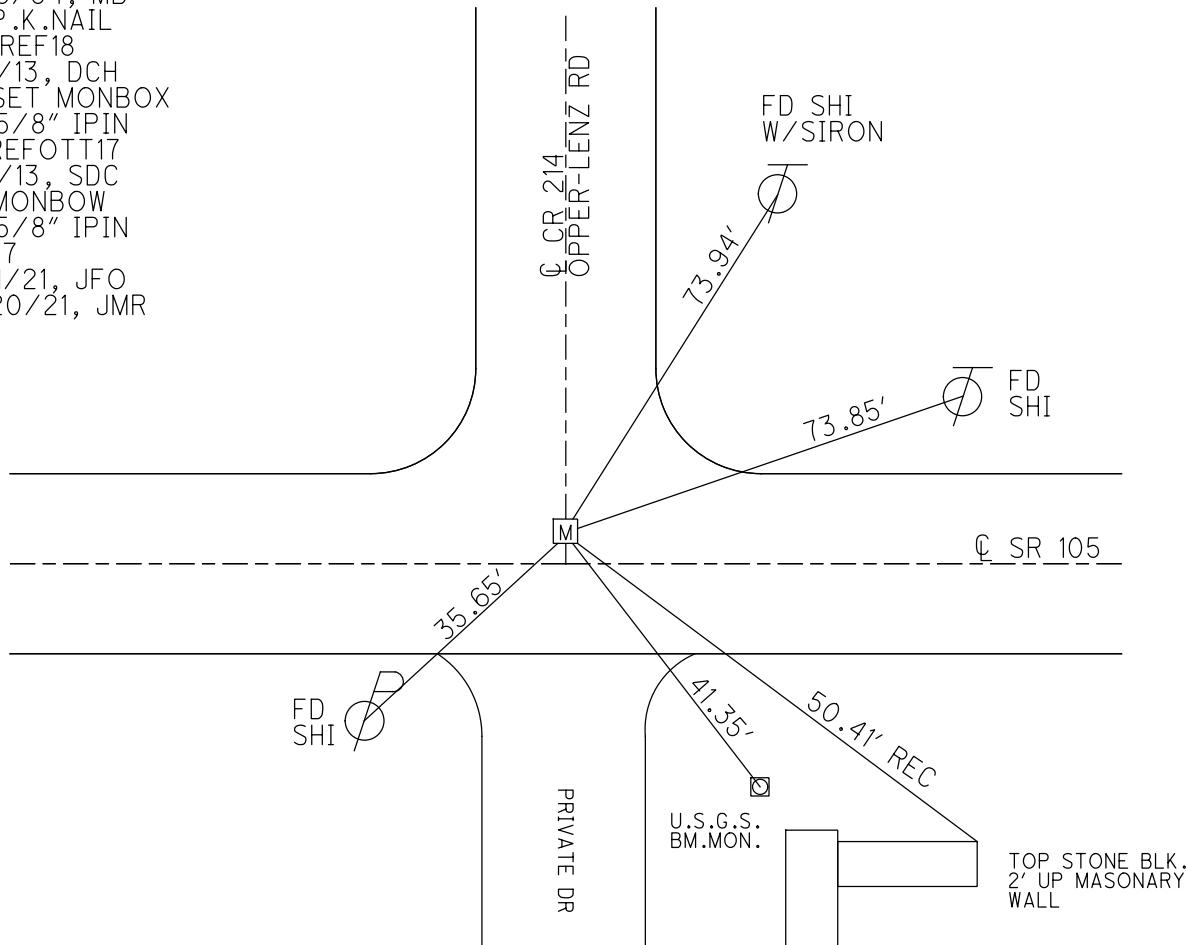
GEOID: NAVD88 2018

GRID: NORTHING: 658937.672

EASTING: 1744022.745



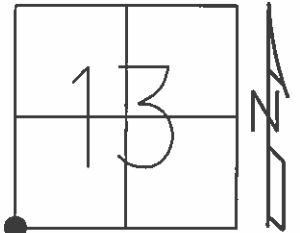
RECORD:
 SET P.K./WASHER
 9/28/94, MB
 FD P.K.NAIL
 OTTREF18
 5/3/13, DCH
 FD SET MONBOX
 W/ 5/8" IPIN
 FINREFOTT17
 7/11/13, SDC
 FD MONBOW
 W/ 5/8" IPIN
 REF17
 7/21/21, JFO
 10/20/21, JMR



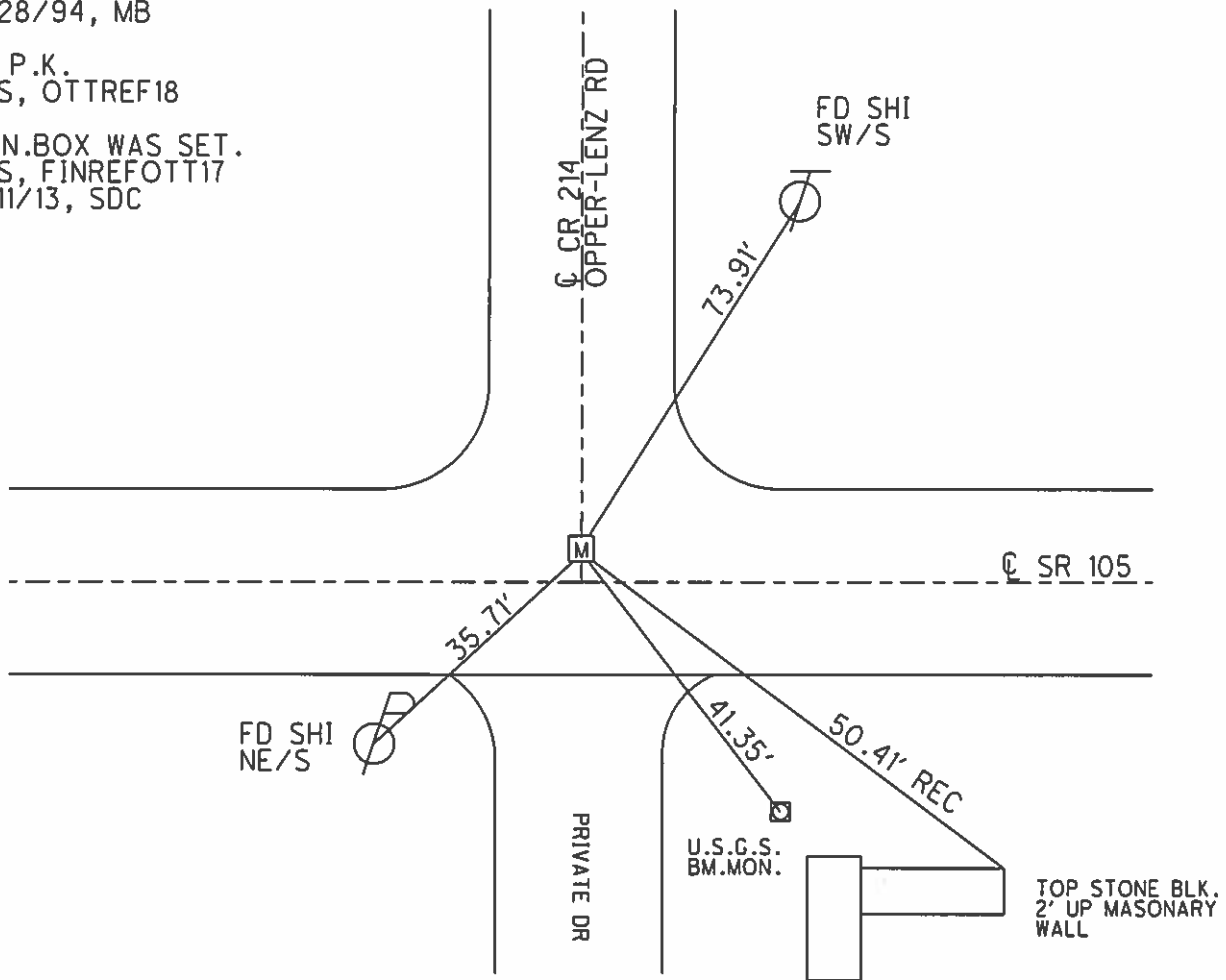
O.D.O.T. DISTRICT 2 SURVEY OFFICE (USE ONLY)

PERSONNEL	REFERENCE NO. <u>17</u>	SHEET <u>19</u> OF <u>33</u>
NOTES <u>RHOADES</u>	DATE <u>7/11/13</u>	ROUTE <u>SR 105</u>
H.C. <u>CODER</u>	WEATHER <u>SUNNY</u>	COUNTY <u>OTTAWA</u>
R.C. <u>RHOADES</u>	TEMP. <u>75°</u>	TOWNSHIP <u>HARRIS</u>
		SECTION <u>13</u>
		T <u>6</u> N R <u>13</u> E

TYPE MONUMENT MON.BOX
 ON SURFACE - ~~BELOW~~ ON
 LEFT - ℄ PAV'T - ~~RIGHT~~ 2.4'
12.3' TO RT EDGE PAVEMENT
 S.L.M. 73+85
 Grid: Northing: 658937.702 Easting: 1744022.601



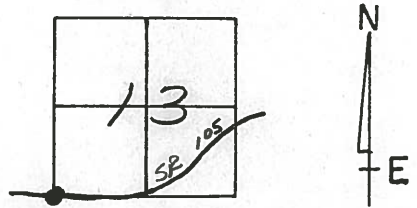
RESET P.K./WASHER
 9/28/94, MB
 FD P.K.
 GPS, OTTREF18
 MON.BOX WAS SET.
 GPS, FINREFOTT17
 7/11/13, SDC



O.D.O.T. DISTRICT 2 SURVEY OFFICE

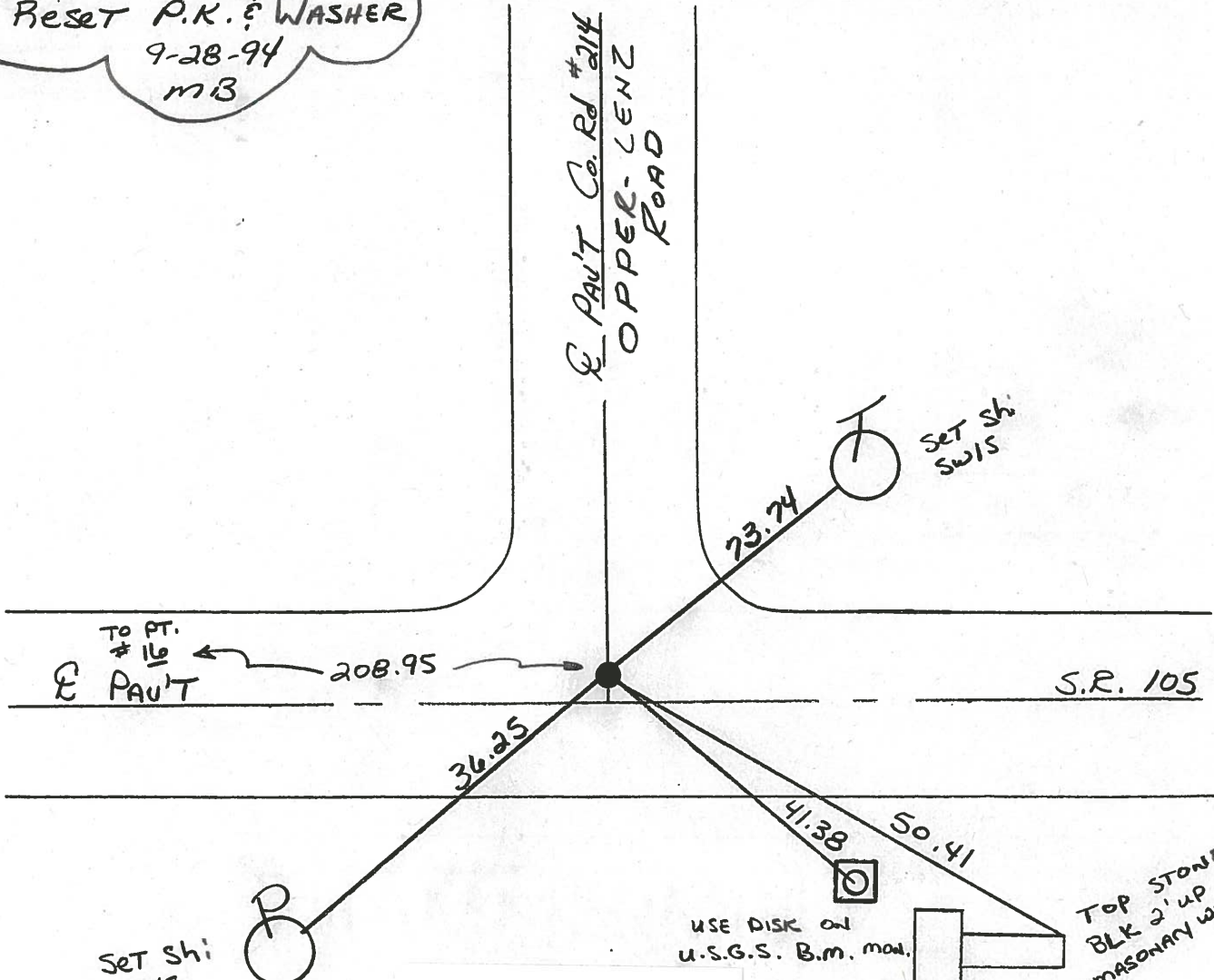
PERSONNEL _____ REFERENCE NO. 17 SHEET 14 OF 26
 NOTES BARNHISEL
 H.C. CORDES DATE 9-28-94 ROUTE 105
 R.C. SLOVAK WEATHER RAIN COUNTY OTTAWA
 _____ TEMP. +55° TOWNSHIP HARRIS
 _____ SECTION 13
 _____ T 6 N R 13 E

TYPE MONUMENT P.K. & WASHER
 ON SURFACE - ~~NO~~ yes
 LEFT- & PAV'T. - ~~2.4~~ 2.4
12.3 TO RT EDGE PAVEMENT
 S.L.M. 73+85



Reset P.K. & WASHER
 9-28-94
 MB

E PAV'T Co. Rd #214
 UPPER-LENZ
 ROAD



Preventive Maintenance
 Microsurfaced 2000
 Existing Point Uncovered
 Date 5-8-2000

O.D.O.T. DISTRICT 2 SURVEY OFFICE

PERSONNEL

REFERENCE NO. 17

SHEET 3 OF 27

NOTES HOFFMAN

H.C. LUCE

R.C. BARNHISEL

DATE 4-30-85

WEATHER clear

TEMP. 70°

ROUTE SR 105

COUNTY OTTAWA

TOWNSHIP HARRIS

SECTION 13

T. 6 N. R. 13 E.

TYPE MONUMENT BOLT SPK/WASHER

Fd P.K./WASHER

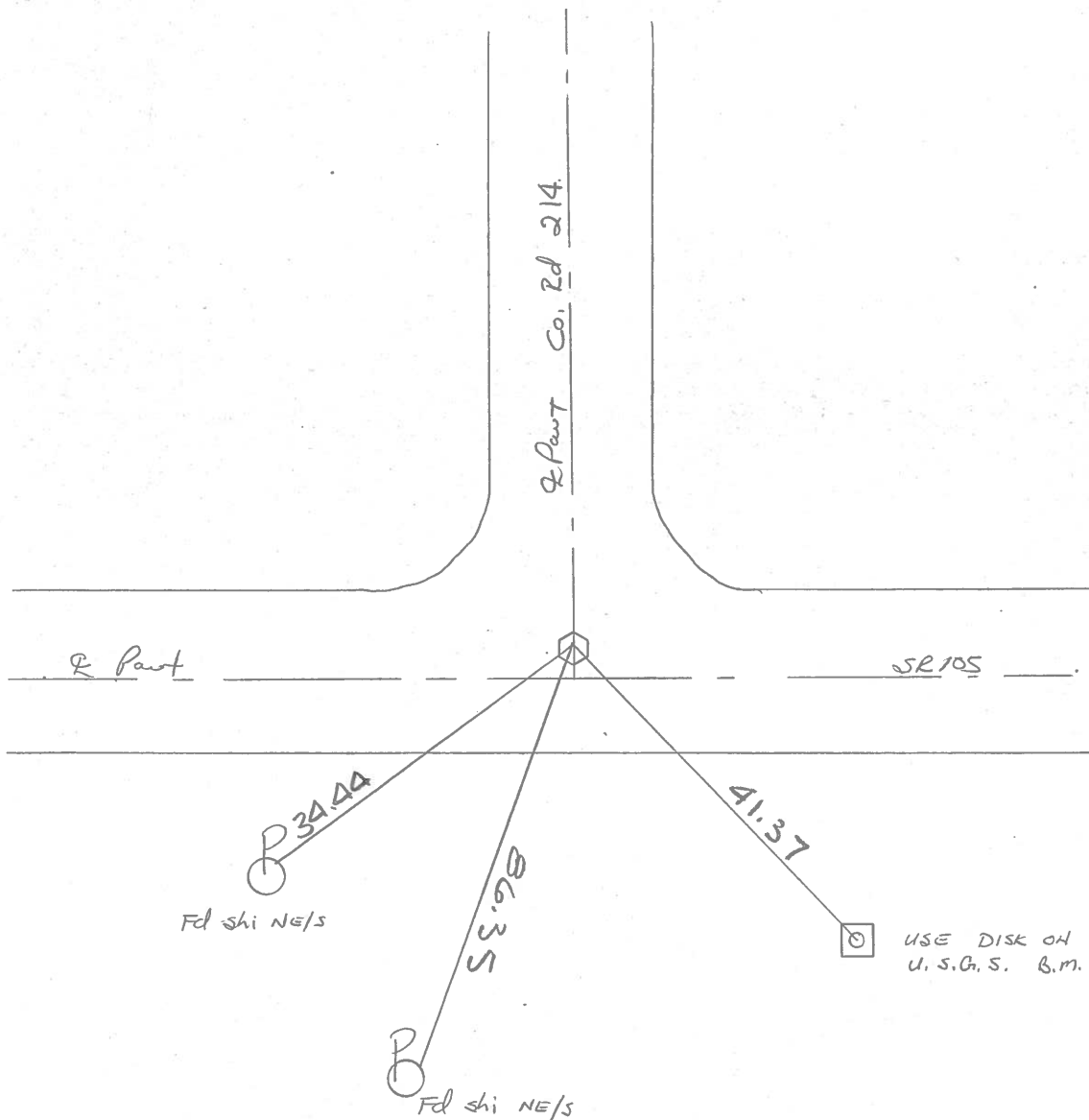
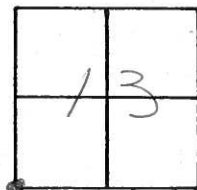
ON SURFACE - BELOW yes

8-27-85 SWA

LEFT - 0 PAV'T. - RIGHT 2.4'

TO EDGE PAVEMENT

S.L.M. ± 73+74



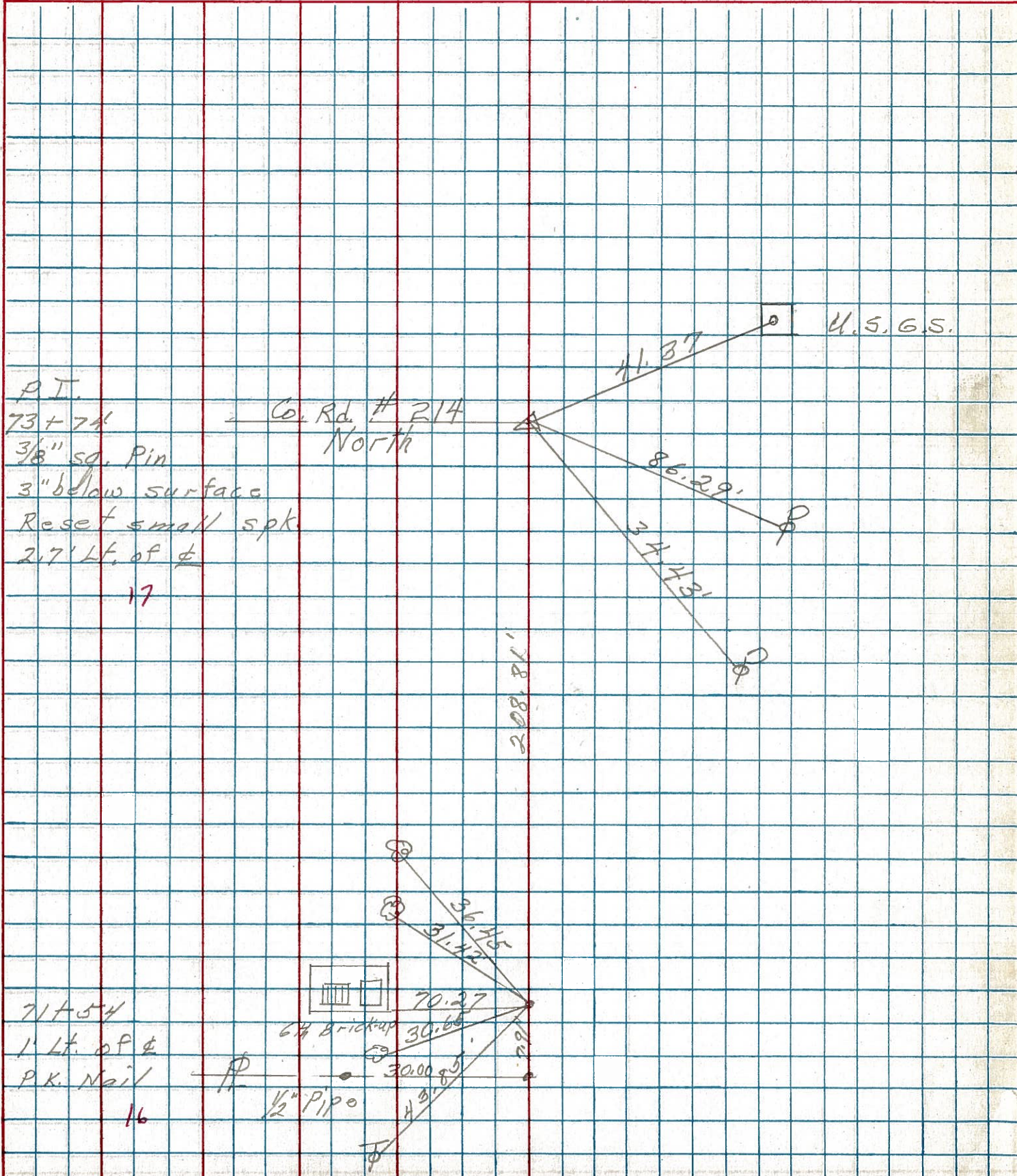
PERSONNEL TITLE PERSONNEL TITLE

COUNTY Ottawa DATE 8-6-74

S. R. 105 WEATHER Sunny

SEC. 14 & 23 TEMP. 80°

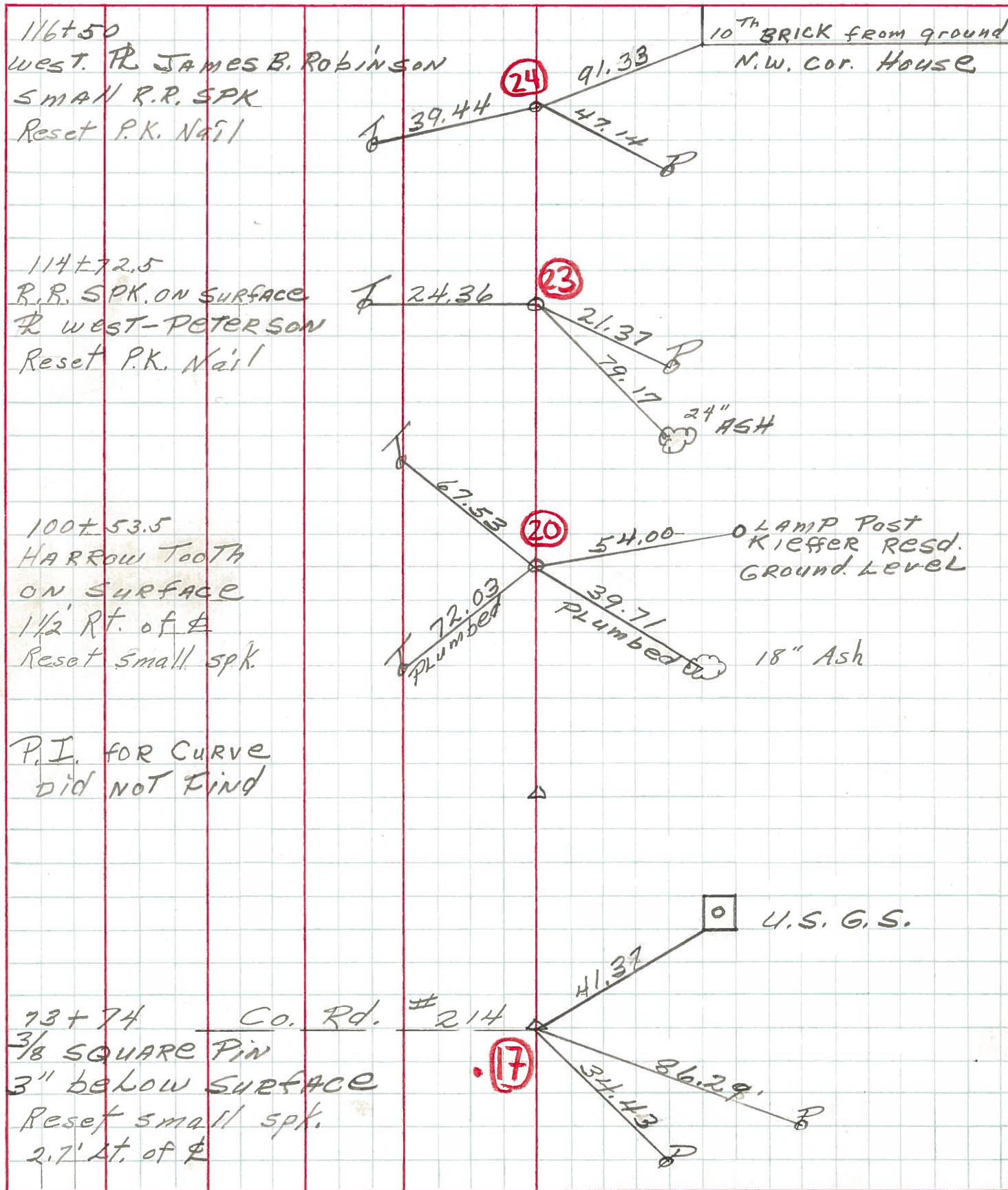
DESCRIPTION Harris Twp. LEFT CENTER LINE RIGHT JOB NO.



PERSONNEL TITLE PERSONNEL TITLE
MOSSER _____
BARBOUR _____
GEYMAN _____
VINSON _____

COUNTY OTTAWA WEATHER SUNNY
 S. R. 105 TEMP. 65°
 SEC. OTT. CO. LINE TO HARBOUR

DESCRIPTION TIES FOR CONTROL POINTS JOB NO. _____
 LEFT CENTER LINE RIGHT



PERSONNEL	TITLE	PERSONNEL	TITLE
Schneider			
Barbour			
Redding			

COUNTY Ottawa DATE 6-24-68
 S. R. 105 WEATHER _____
 SEC. San. Co. Line to Oak Harbor TEMP. _____

DESCRIPTION Ties for Control Points JOB NO. _____

