

O.D.O.T. DISTRICT 2 SURVEY OFFICE (USE ONLY)

PERSONNEL

REFERENCE NO. 18

SHEET 20 OF 33

NOTES RHOADES

DATE 7/21/21

ROUTE SR 105

H.C. O'DONNELL

WEATHER CLOUDY

COUNTY OTTAWA

R.C. RHOADES

TEMP. 65°

TOWNSHIP HARRIS

DWG BY RHOADES PID CHIP SEAL

SECTION 13

T 6 N R 13 E

TYPE MONUMENT MAG/WASHER

ON SURFACE - ~~BELOW~~ ON

OFFSET Q PAVEMENT 0.5' LT : ~~RT~~

9.2' TO LT EDGE PAVEMENT

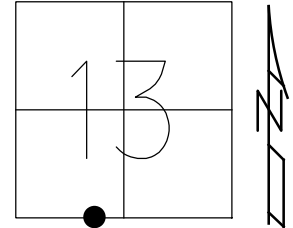
STATION: 92+43

HORZ. DATUM: NAD83 2011

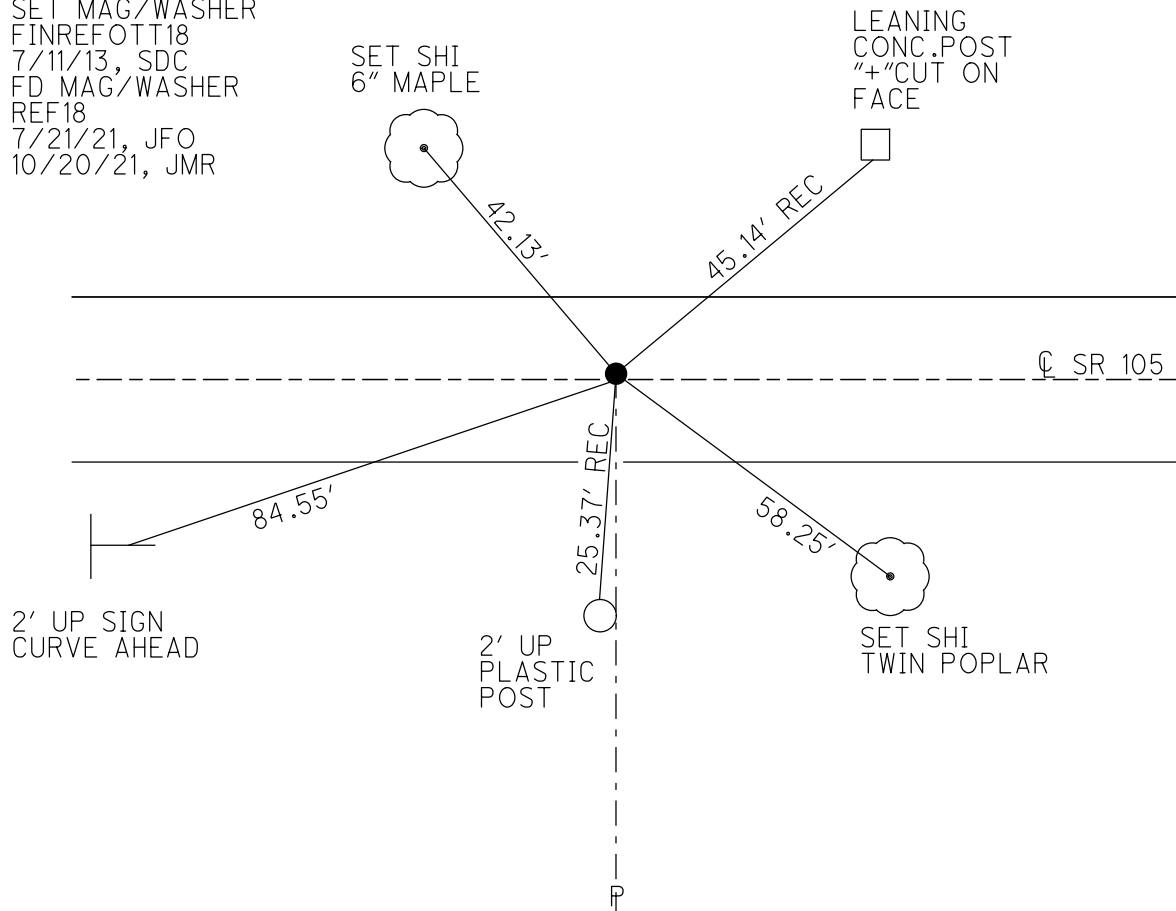
GEOID: NAVD88 2018

GRID: NORTHING: 658941.361

EASTING: 1745876.087



RECORD: P.O.T.
 SET P.K./WASHER
 9/28/94, MB
 FD LG.R.R.SPIKE
 5" DOWN
 OTTREF19
 5/3/13, DCH
 SET MAG/WASHER
 FINREFOTT18
 7/11/13, SDC
 FD MAG/WASHER
 REF18
 7/21/21, JFO
 10/20/21, JMR



O.D.O.T. DISTRICT 2 SURVEY OFFICE (USE ONLY)

PERSONNEL

REFERENCE NO. 18

SHEET 20 OF 33

NOTES HOMAN

DATE 5/3/13

ROUTE SR 105

H.C. HOMAN

WEATHER CLOUDY

COUNTY OTTAWA

R.C. ROUSOS

TEMP. 65°

TOWNSHIP HARRIS

SECTION 13

T 6 N R 13 E

TYPE MONUMENT LG.R.R.SPIKE

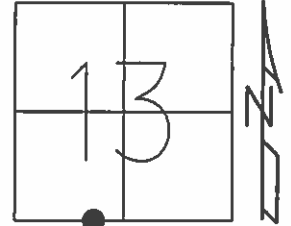
~~ON SURFACE~~ - BELOW 5"

LEFT - Q PAV'T - ~~RIGHT~~ 0.5'

9.2' TO LT EDGE PAVEMENT

S.L.M. 92+43

Grid: Northing: 658941.514 Easting: 1745876.013



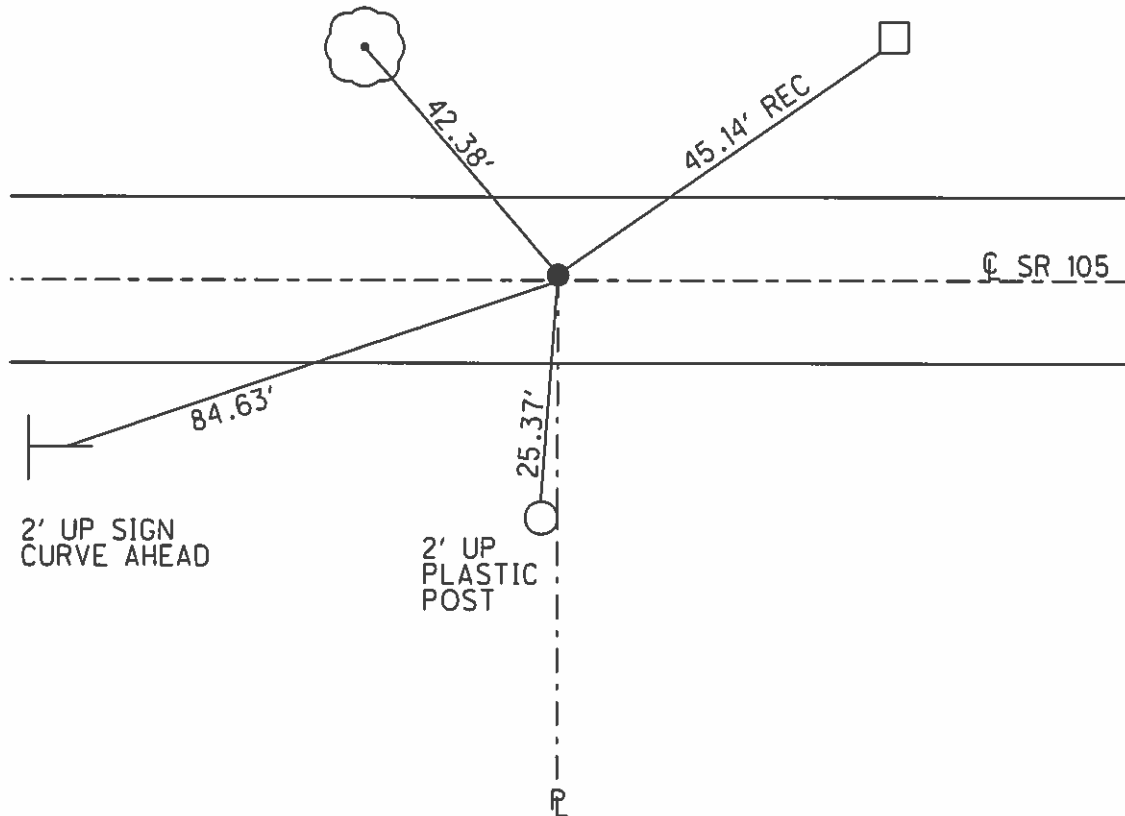
RECORD: P.O.T.
RESET P.K./WASHER
9/28/94, MB

FD P.K.
GPS, OTTREF19

SET MAG/WASHER
7/10/13, SDC
GPS, FINREFOTT18
7/11/13, SDC

SET SHI
6" MAPLE

LEANING
CONC. POST
+" CUT ON
FACE



O.D.O.T. DISTRICT 2 SURVEY OFFICE

PERSONNEL

REFERENCE NO. 18

SHEET 15 OF 26

NOTES BARNHISEL

H.C. CORDES

R.C. SCLOVAK

DATE 9-28-94

WEATHER RAIN

TEMP. +55°

ROUTE 105

COUNTY OTTAWA

TOWNSHIP HARRIS

SECTION 13

T 6 N R 13 E

TYPE MONUMENT Lg RR Spk

~~ON SURFACE~~ - BELOW 5"

LEFT- & PAV'T. - ~~RIGHT~~ 0.5

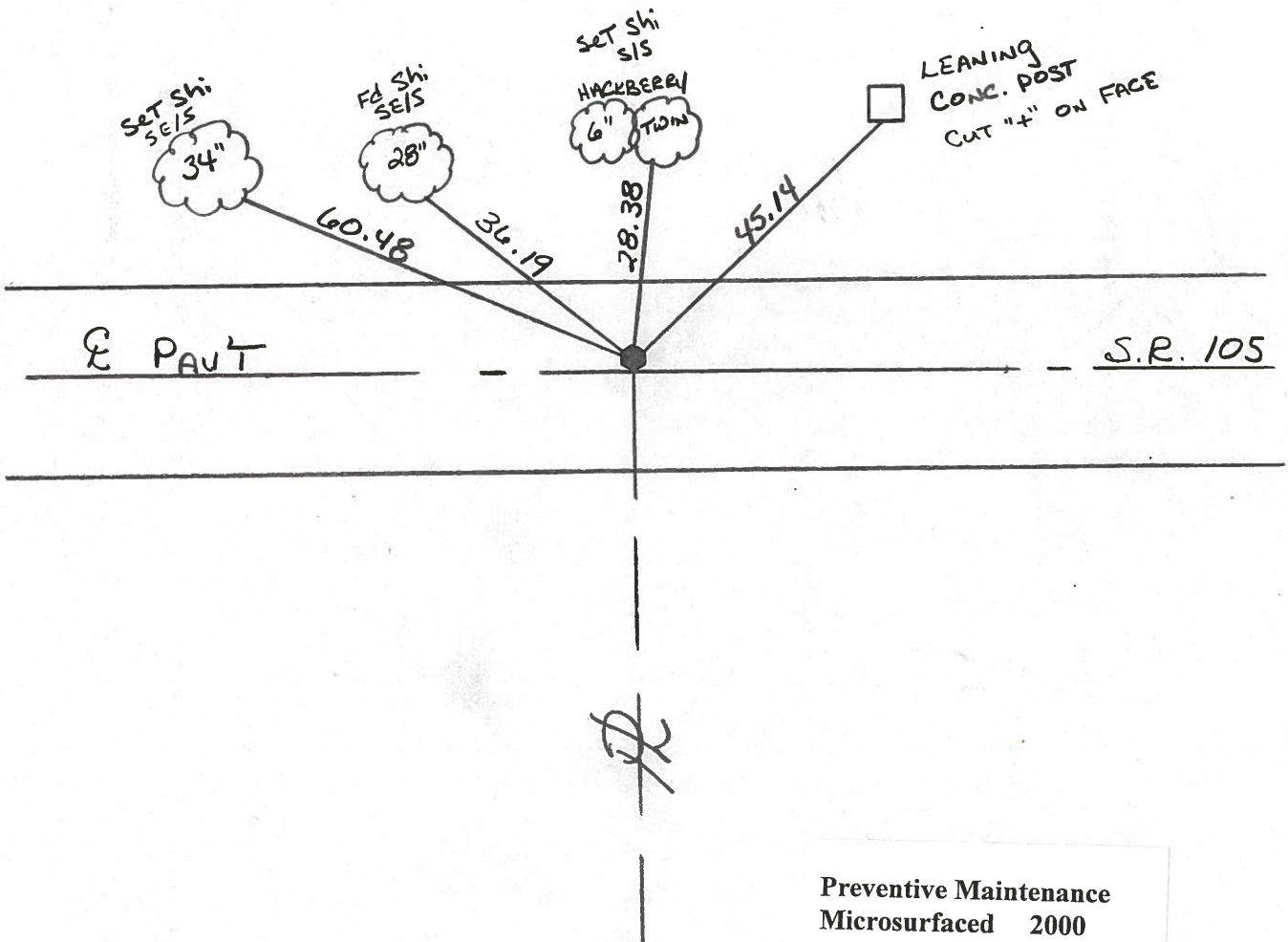
9.2 TO LT EDGE PAVEMENT

S.L.M. 92+43



Record: P.O.T.

Reset P.K. & WASHER
9-28-94
MB



Preventive Maintenance
Microsurfaced 2000
Existing Point Uncovered
Date 5-8-2000

PERSONNEL TITLE PERSONNEL TITLE

COUNTY Ottawa DATE 8-6-74

S. R. 105 WEATHER Fair

SEC. 135 24 TEMP. 70°

DESCRIPTION Harris Twp. LEFT CENTER LINE RIGHT JOB NO.

