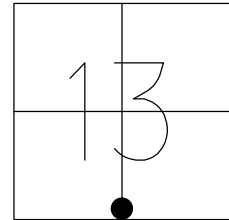


O.D.O.T. DISTRICT 2 SURVEY OFFICE (USE ONLY)

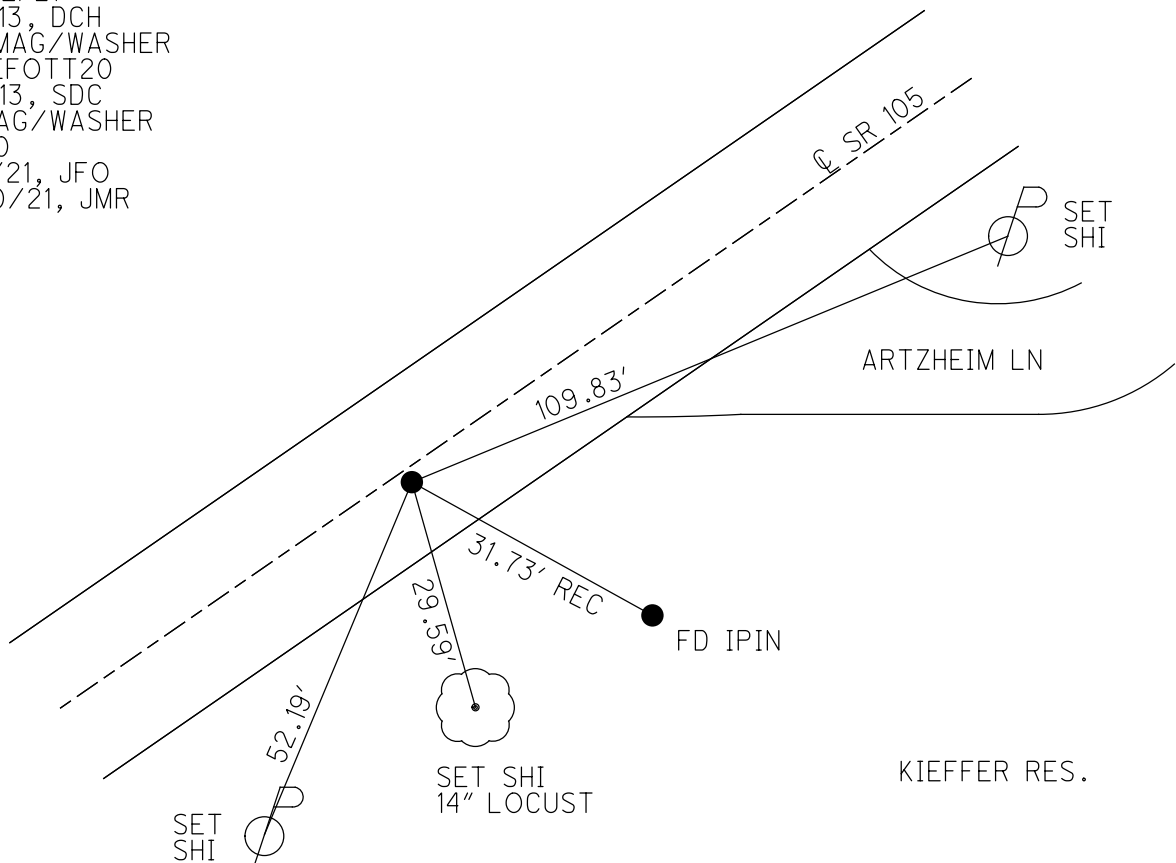
PERSONNEL _____ REFERENCE NO. 20 SHEET 22 OF 33
 NOTES RHOADES DATE 7/21/21 ROUTE SR 105
 H.C. O'DONNELL WEATHER CLOUDY COUNTY OTTAWA
 R.C. RHOADES TEMP. 65° TOWNSHIP HARRIS
 DWG BY RHOADES PID CHIP SEAL SECTION 13
 T 6 N R 13 E

TYPE MONUMENT MAG/WASHER
~~ON SURFACE~~ - BELOW 1.5"
 OFFSET \varnothing PAVEMENT 1.9' ~~LT~~ : RT
7.6' TO RT EDGE PAVEMENT
 STATION: 100+81

HORIZ.DATUM: NAD83 2011 GEOID: NAVD88 2018
 GRID: NORTHING: 659114.158 EASTING: 1746672.685



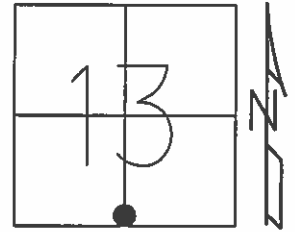
RECORD: P.O.T.
 SET P.K./WASHER
 10/12/94, MB
 FD P.K./WASHER
 1.5" DOWN
 OTTREF21
 5/3/13, DCH
 SET MAG/WASHER
 FINREFOTT20
 7/11/13, SDC
 FD MAG/WASHER
 REF20
 7/21/21, JFO
 10/20/21, JMR



O.D.O.T. DISTRICT 2 SURVEY OFFICE (USE ONLY)

PERSONNEL _____	REFERENCE NO. <u>20</u>	SHEET <u>22</u> OF <u>33</u>
NOTES <u>HOMAN</u>	DATE <u>5/3/13</u>	ROUTE <u>SR 105</u>
H.C. <u>HOMAN</u>	WEATHER <u>CLOUDY</u>	COUNTY <u>OTTAWA</u>
R.C. <u>ROUSOS</u>	TEMP. <u>70°</u>	TOWNSHIP <u>HARRIS</u>
_____	_____	SECTION <u>13</u>
_____	_____	T <u>6</u> N R <u>13</u> E

TYPE MONUMENT P.K./WASHER
~~ON SURFACE~~ - BELOW 1.5"
~~LEFT~~ - CL PAV'T - RIGHT 1.9'
7.6' TO RT EDGE PAVEMENT
 S.L.M. 100+81

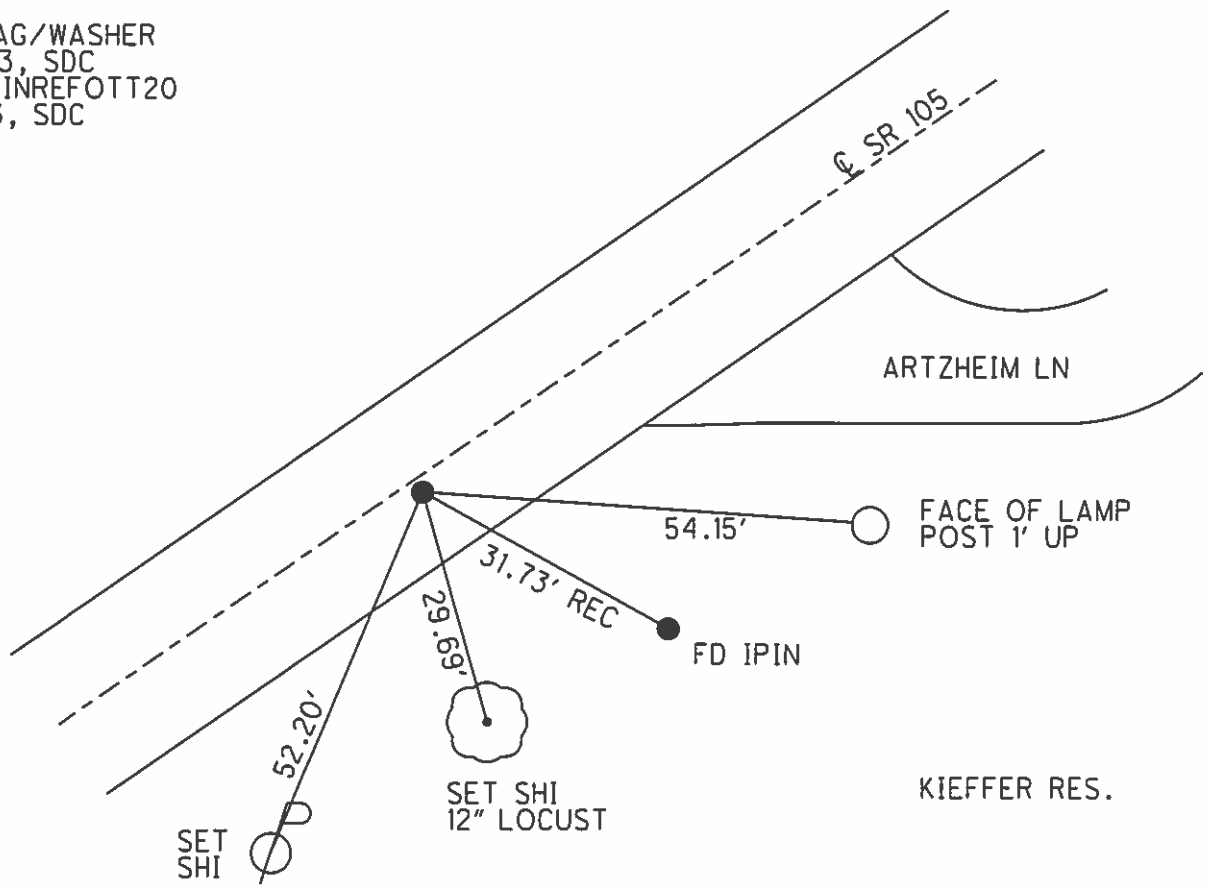


Grid: Northing: 659114.164 Easting: 1746672.552

RECORD: P.O.T.
 RESET P.K./WASHER
 10/12/94, MB

FD P.K.
 GPS, OTTREF21

SET MAG/WASHER
 7/10/13, SDC
 GPS, FINREFOTT20
 7/11/13, SDC



KIEFFER RES.

O.D.O.T. DISTRICT 2 SURVEY OFFICE

PERSONNEL _____

REFERENCE NO. 20

SHEET 17 OF 26

NOTES BARNHISEL

H.C. CORDES

DATE 9-15-94

ROUTE 105

R.C. SLOVAK

WEATHER SUNNY

COUNTY OTTAWA

TEMP. +81°

TOWNSHIP HARRIS

SECTION 13

T 6 N R 13 E

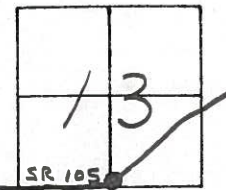
TYPE MONUMENT P.K. & WASHER

ON SURFACE - ~~NO~~ YES

~~1.9~~ - 1.9 PAV'T. - RIGHT

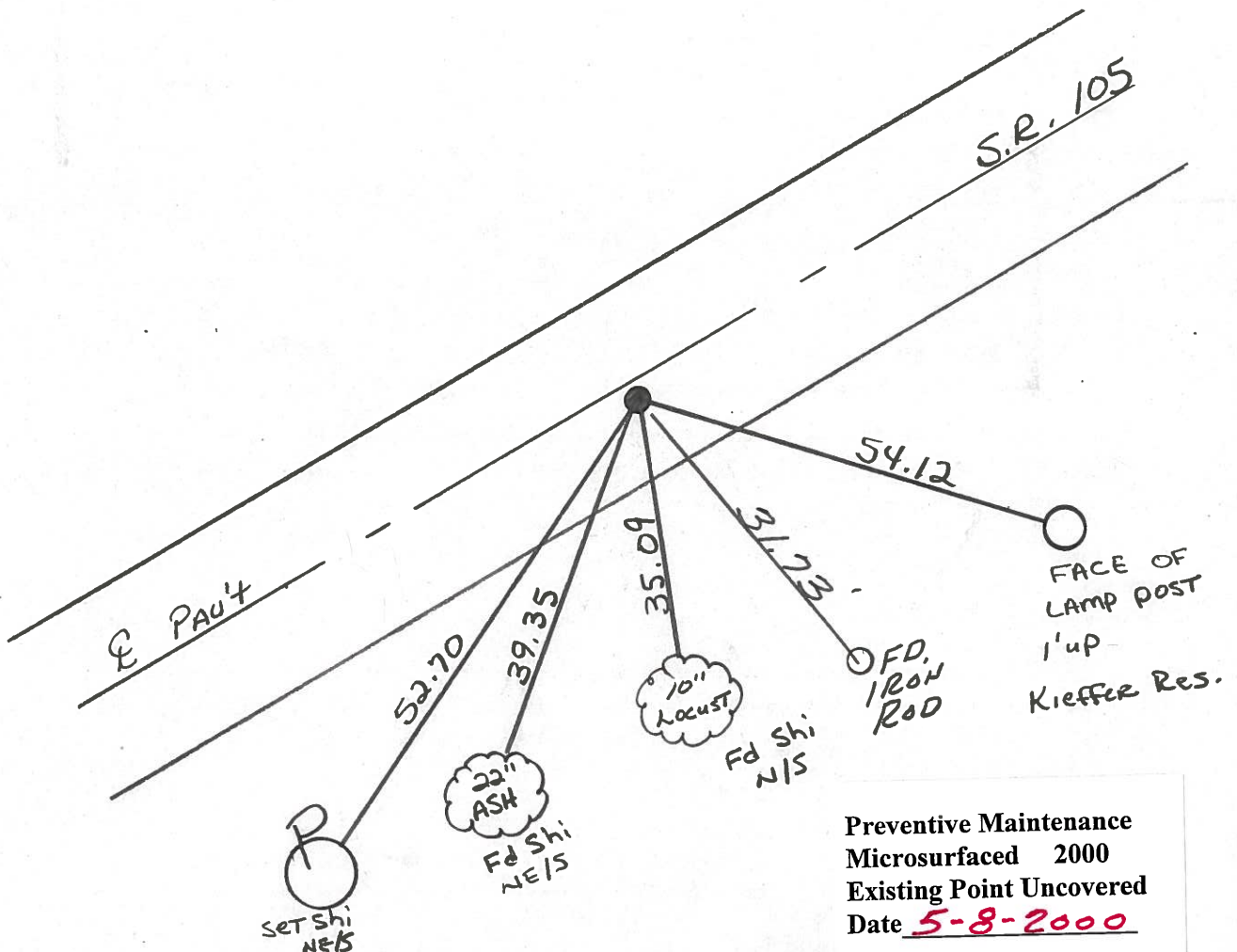
7.6 TO RT EDGE PAVEMENT

S.L.M. 100+81



RECORD: P.O.T.

RESET P.K. & WASHER
10-12-94
M.B.



Preventive Maintenance
Microsurfaced 2000
Existing Point Uncovered
Date 5-8-2000

O.D.O.T. DISTRICT 2 SURVEY OFFICE

PERSONNEL _____

REFERENCE NO. 20

SHEET 5 OF 27

NOTES Hoffman

H.C. LOHRKE

DATE 5-1-85

ROUTE SR 105

R.C. BARWISER

WEATHER Cloudy

COUNTY OTTAWA

TEMP. 60°

TOWNSHIP HARRIS

SECTION 13

T. 6 N. R. 13 E

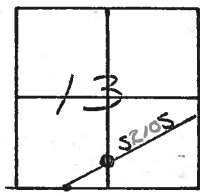
TYPE MONUMENT P.K. / WASHER Set P.K./WASHER

ON SURFACE BELOW yes 8-27-85 SWH

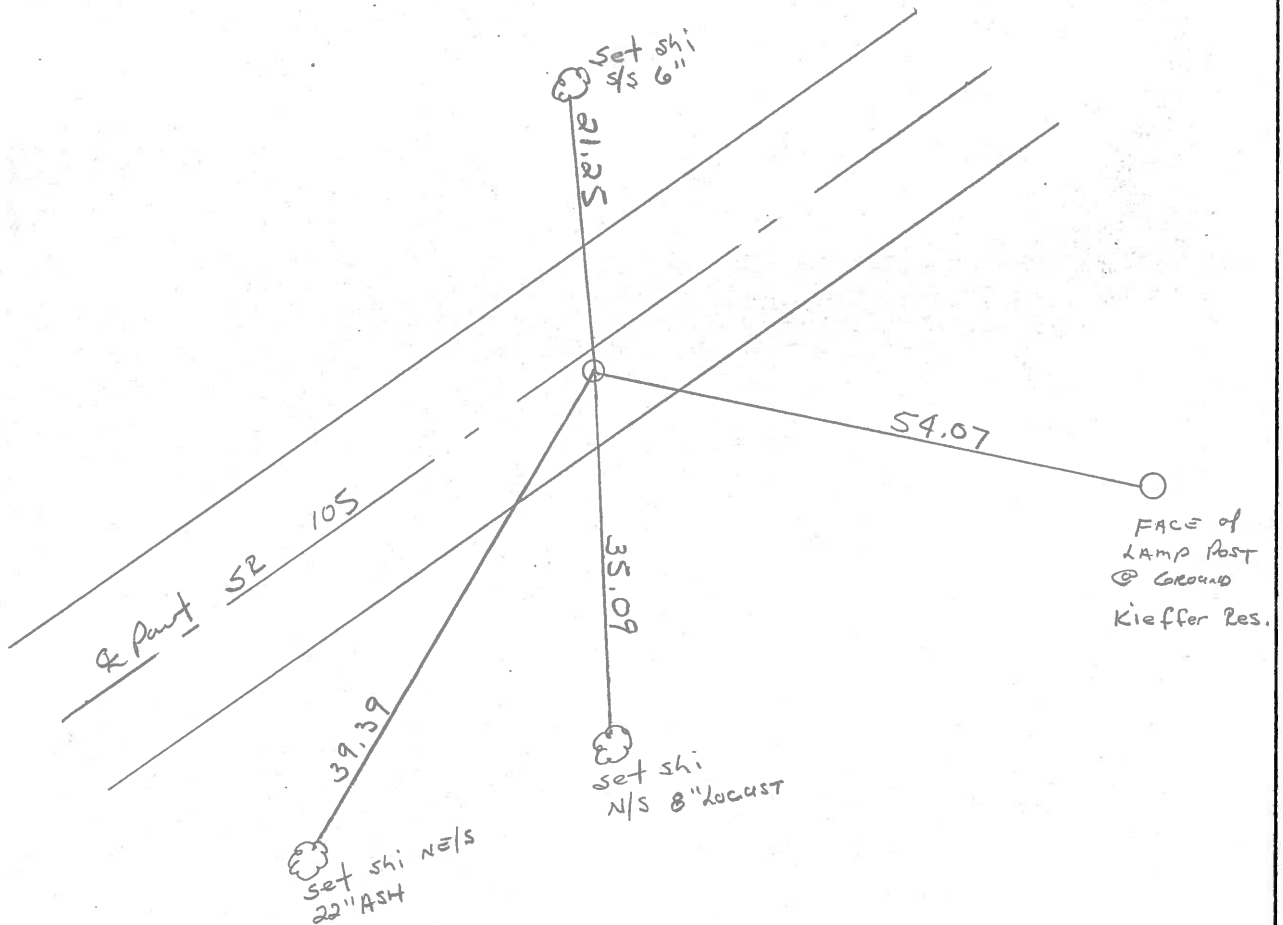
~~LEFT~~ - C. PAV'T. - RIGHT 1.9

7.6 TO RT EDGE PAVEMENT

S.L.M. 100 + 57.67



P.O.T.



PERSONNEL TITLE PERSONNEL TITLE

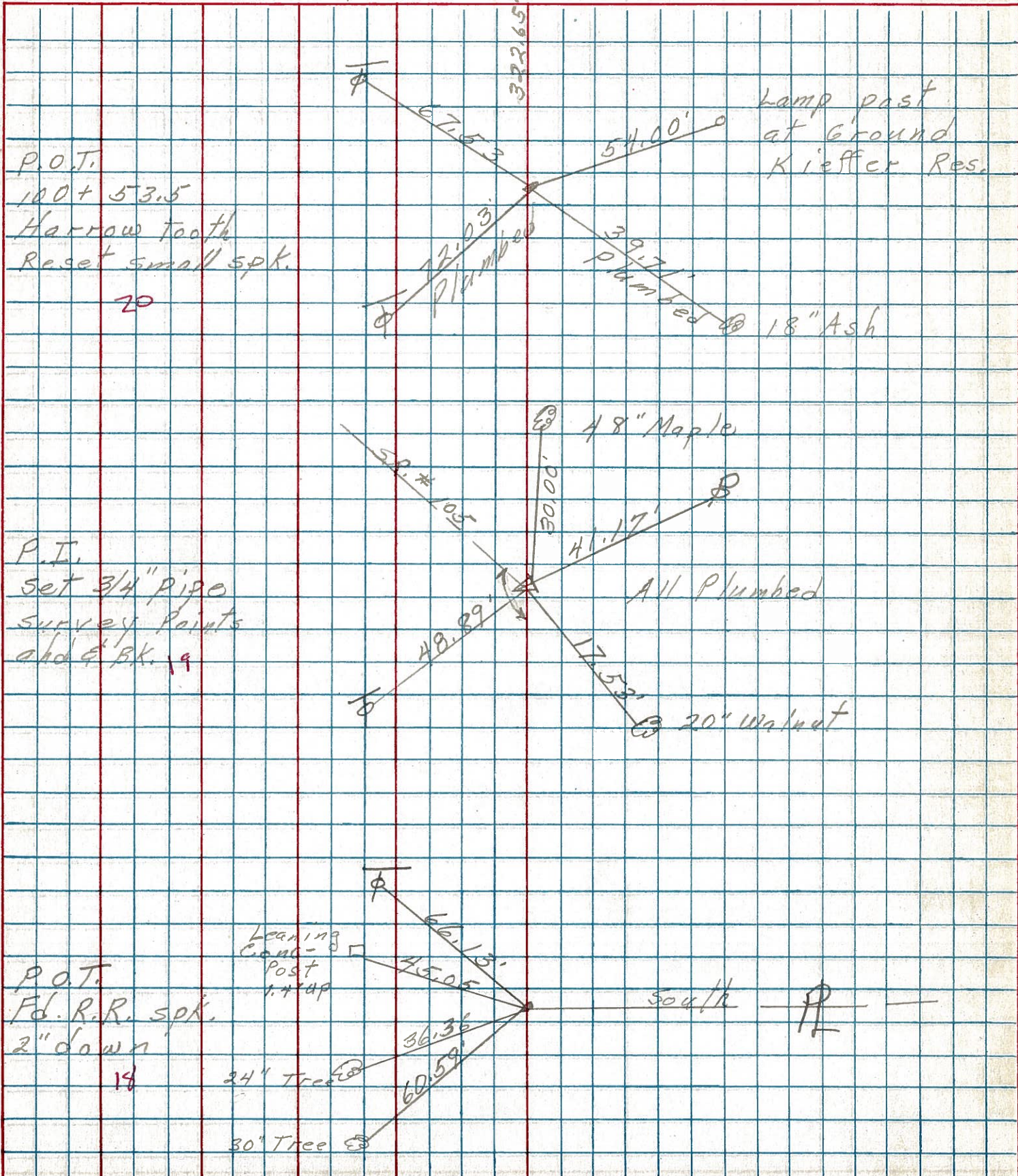
COUNTY Ottawa DATE 8-6-74

S. R. 105 WEATHER Fair

SEC. 135 24 TEMP. 70°

DESCRIPTION Harris Twp. JOB NO.

LEFT CENTER LINE RIGHT



PERSONNEL	TITLE	PERSONNEL	TITLE
<u>MOSSER</u>			
<u>BARBOUR</u>			
<u>GEYMAN</u>			
<u>VINSON</u>			

COUNTY OTTAWA
 S. R. 105
 SEC OTT. CO. LINE TO HARBOUR
 WEATHER SUNNY
 TEMP. 65°

DESCRIPTION TIES FOR CONTROL POINTS JOB NO. _____

