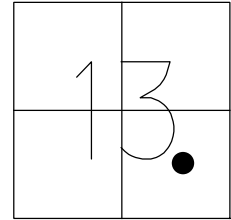


O.D.O.T. DISTRICT 2 SURVEY OFFICE (USE ONLY)

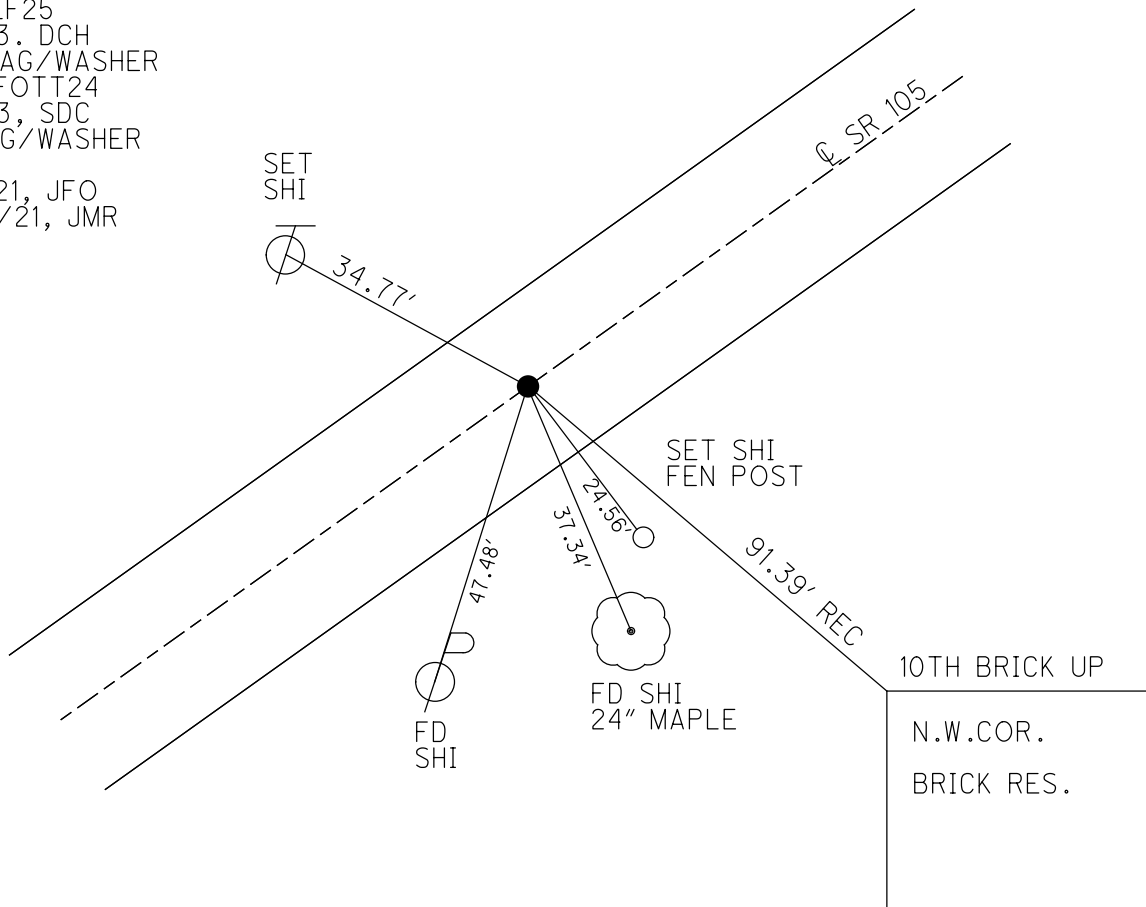
PERSONNEL _____ REFERENCE NO. 24 SHEET 26 OF 33
 NOTES RHOADES DATE 7/21/21 ROUTE SR 105
 H.C. O'DONNELL WEATHER CLOUDY COUNTY OTTAWA
 R.C. RHOADES TEMP. 65° TOWNSHIP HARRIS
 DWG BY RHOADES PID CHIP SEAL SECTION 13
 T 6 N R 13 E

TYPE MONUMENT MAG/WASHER
 ON SURFACE - ~~BELOW~~ ON
 OFFSET Q PAVEMENT ON LT : RT
8.8' TO RT EDGE PAVEMENT
 STATION: 116+84



HORZ.DATUM: NAD83 2011 GEOID: NAVD88 2018
 GRID: NORTHING: 660032.594 EASTING: 1747980.115

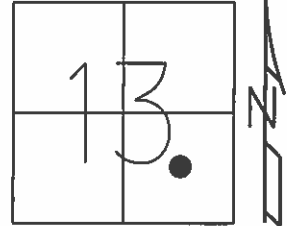
RECORD: P.O.T.
 SET P.K./WASHER
 10/12/94, MB
 FD P.K./WASHER
 OTTREF25
 5/3/13, DCH
 SET MAG/WASHER
 FINREFOTT24
 7/11/13, SDC
 FD MAG/WASHER
 REF24
 7/21/21, JFO
 10/20/21, JMR



O.D.O.T. DISTRICT 2 SURVEY OFFICE (USE ONLY)

PERSONNEL	REFERENCE NO. <u>24</u>	SHEET <u>26</u> OF <u>33</u>
NOTES <u>HOMAN</u>	DATE <u>5/3/13</u>	ROUTE <u>SR 105</u>
H.C. <u>HOMAN</u>	WEATHER <u>SUNNY</u>	COUNTY <u>OTTAWA</u>
R.C. <u>ROUSOS</u>	TEMP. <u>75°</u>	TOWNSHIP <u>HARRIS</u>
		SECTION <u>13</u>
		T. <u>6</u> N R. <u>13</u> E

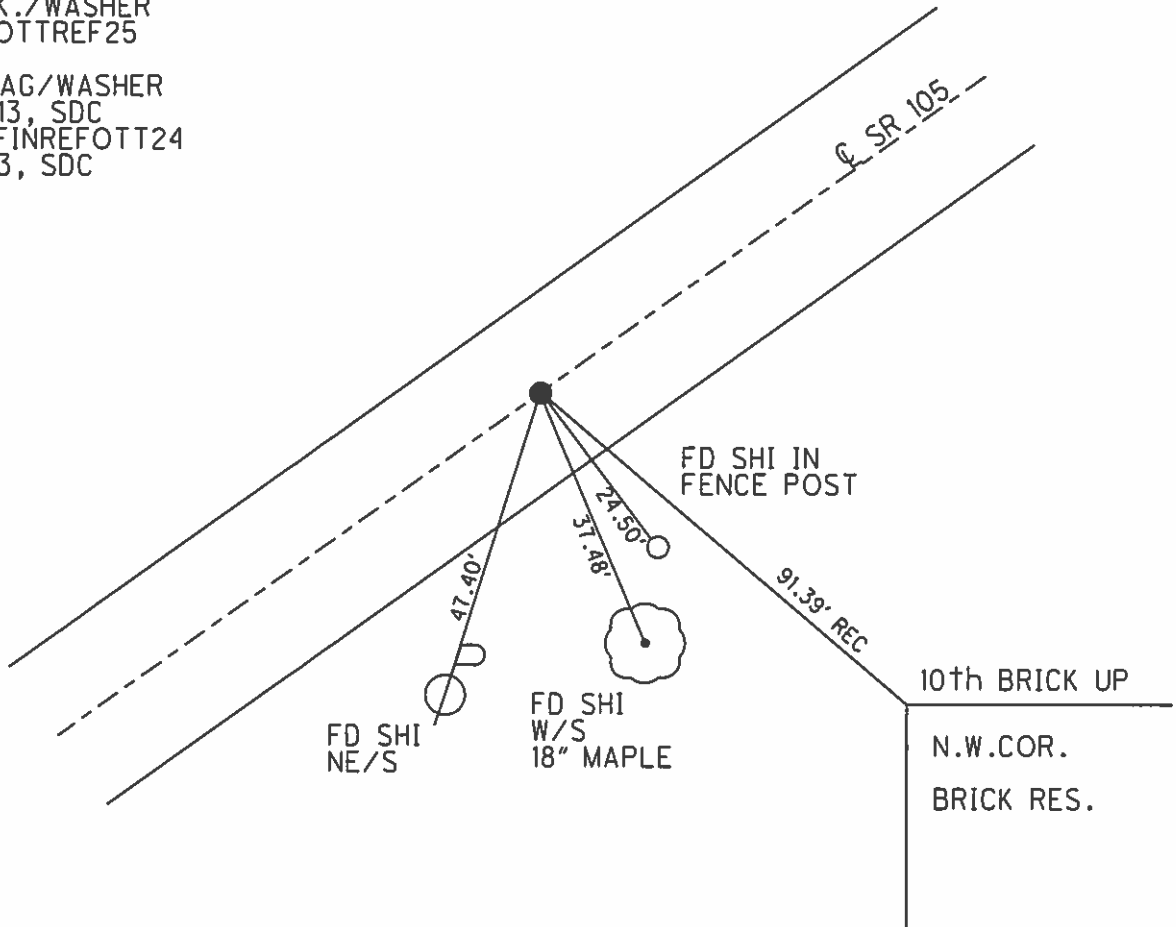
TYPE MONUMENT P.K./WASHER
 ON SURFACE - ~~BELOW~~ ON
 LEFT - Q PAV'T - RIGHT ON
8.8' TO RT EDGE PAVEMENT
 S.L.M. 116+84
 Grid: Northing: 660032.638 Easting: 1747980.012



RECORD: P.O.T.
 RESET P.K./WASHER
 10/12/94, MB

FD P.K./WASHER
 GPS, OTTREF25

SET MAG/WASHER
 7/10/13, SDC
 GPS, FINREFOTT24
 7/11/13, SDC



O.D.O.T. DISTRICT 2 SURVEY OFFICE

PERSONNEL

REFERENCE NO. 24

SHEET 21 OF 26

NOTES BARNHISEL

H.C. CORDES

R.C. SLOVAK

DATE 9-15-94

WEATHER SUNNY

TEMP. +81°

ROUTE 105

COUNTY OTTAWA

TOWNSHIP HARRIS

SECTION 13

T 6 N R 13 E

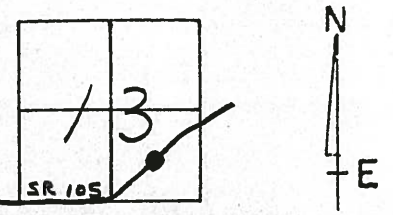
TYPE MONUMENT P.K. & WASHER

ON SURFACE - ~~BELOW~~ yes

~~EST - E PAV'T. - RIGHT~~ yes

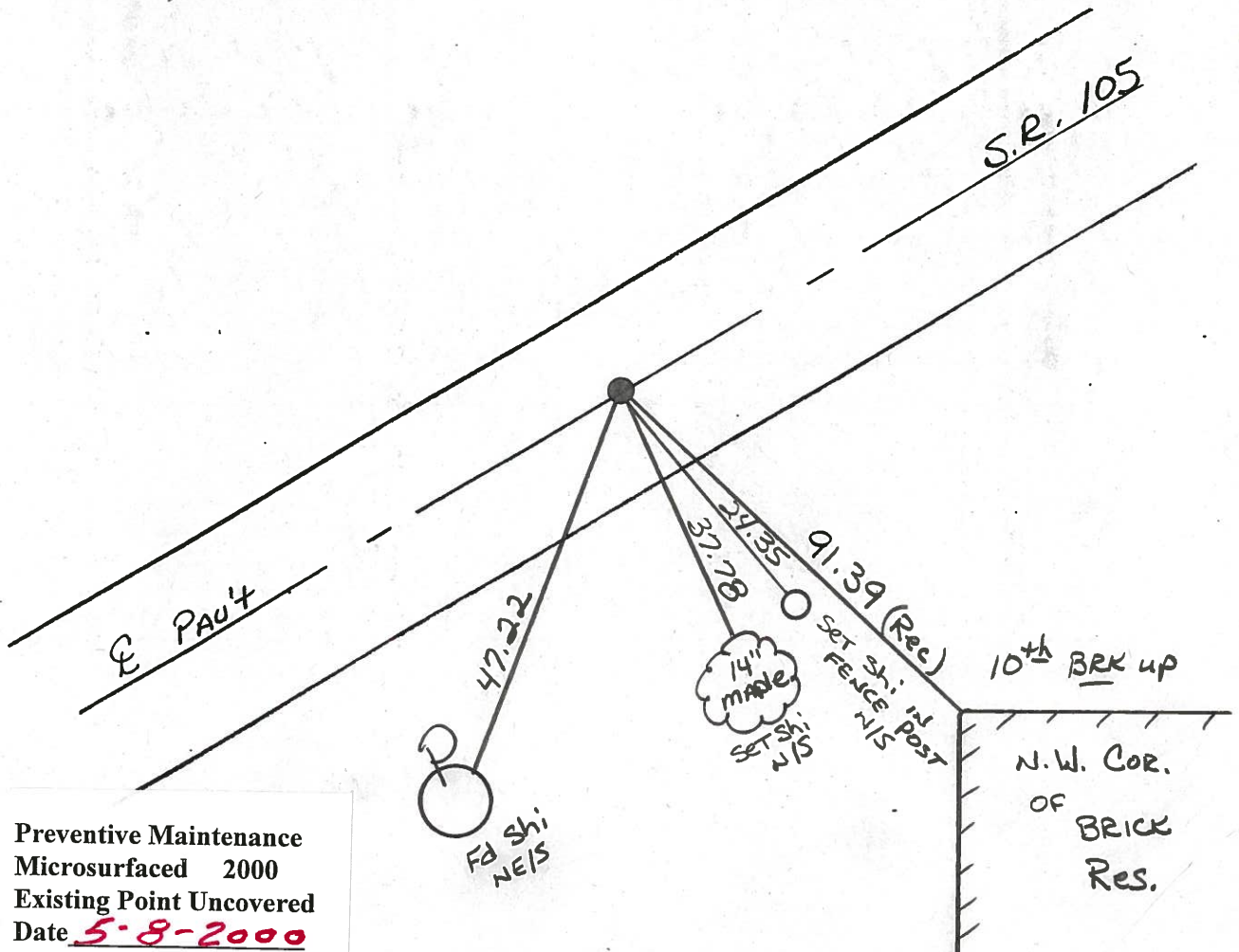
B.8 TO RT EDGE PAVEMENT

S.L.M. 116+84



P.O.T.

Reset P.K. & WASHER
10-12-94
M.B.



Preventive Maintenance
Microsurfaced 2000
Existing Point Uncovered
Date 5-8-2000

O.D.O.T. DISTRICT 2 SURVEY OFFICE

PERSONNEL

REFERENCE NO. 24

SHEET 9 OF 27

NOTES HOFFMAN

H.C. BARNHISEL

DATE April 17, 1985

ROUTE SR 105

R.C. LOSHRKE

WEATHER sleet

COUNTY OTTAWA

TEMP. +35°

TOWNSHIP HARRIS

SECTION 13

T6 N R 13 E

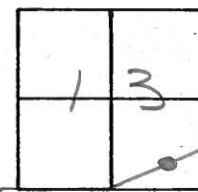
TYPE MONUMENT P.K./WASHER Set P.K./WASHER

ON SURFACE - BELOW Yes 8-27-85 SWA

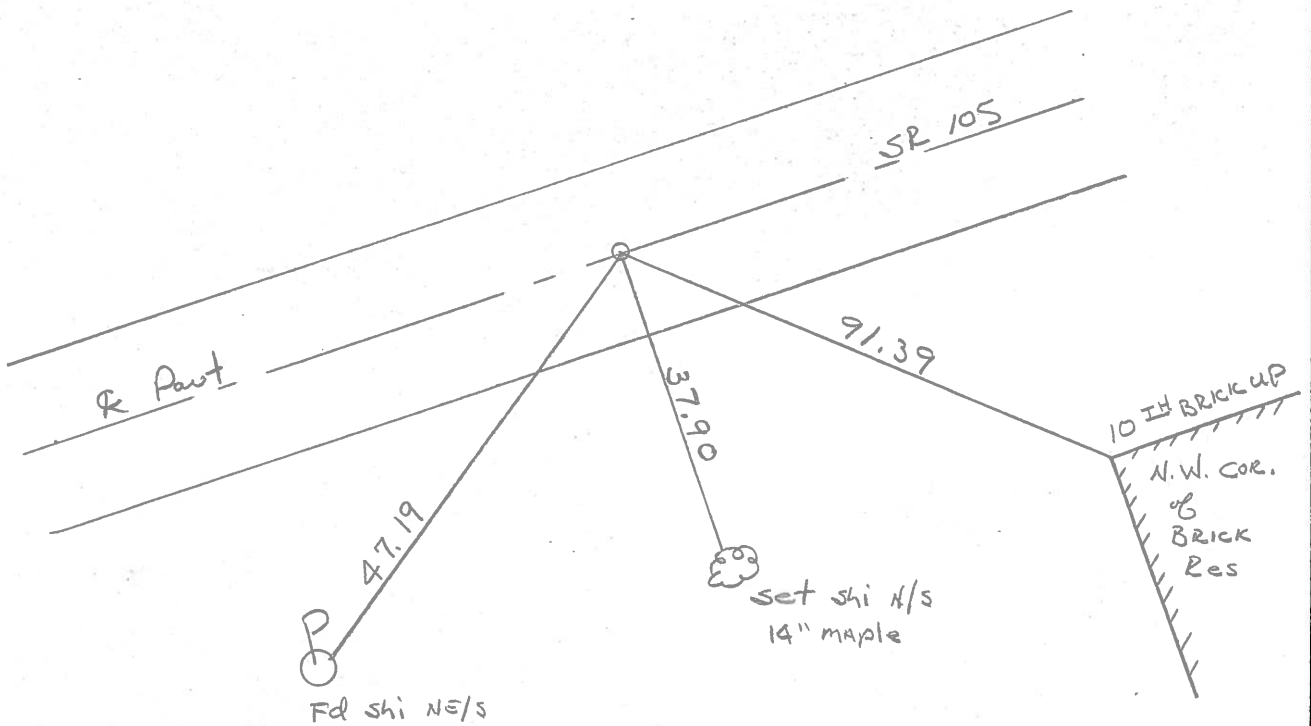
LEFT- & PAV'T. - RIGHT ON &

8.8' TO RT. EDGE PAVEMENT 9.5' TO LT. EP

S.L.M. 116 +54 (Resurfacing Stationing)



P.O.T.



PERSONNEL TITLE PERSONNEL TITLE

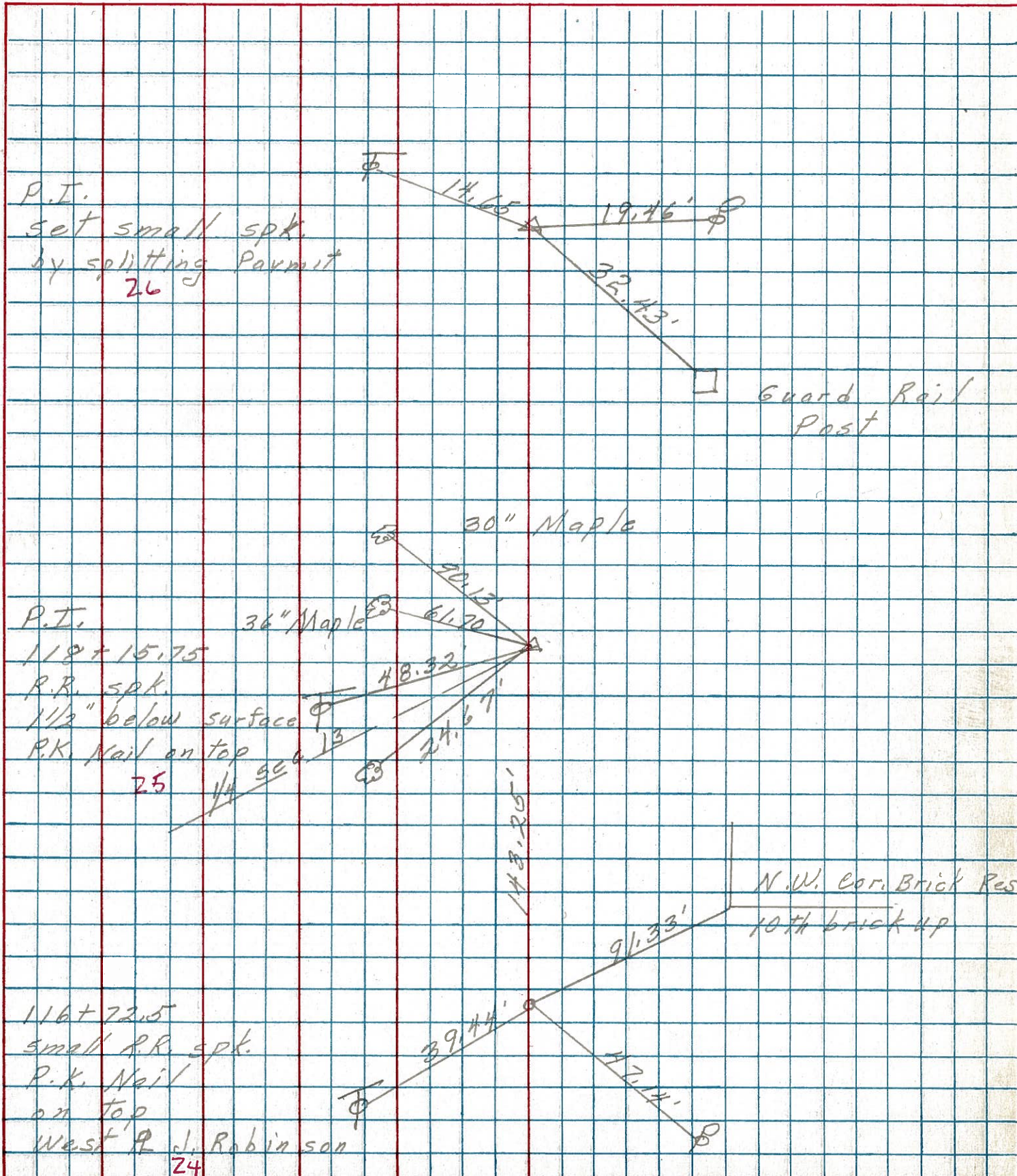
COUNTY Ottawa DATE 8-8-74

S. R. 105 WEATHER cloudy

SEC. 13 TEMP. 85°

DESCRIPTION Harris Twp. JOB NO.

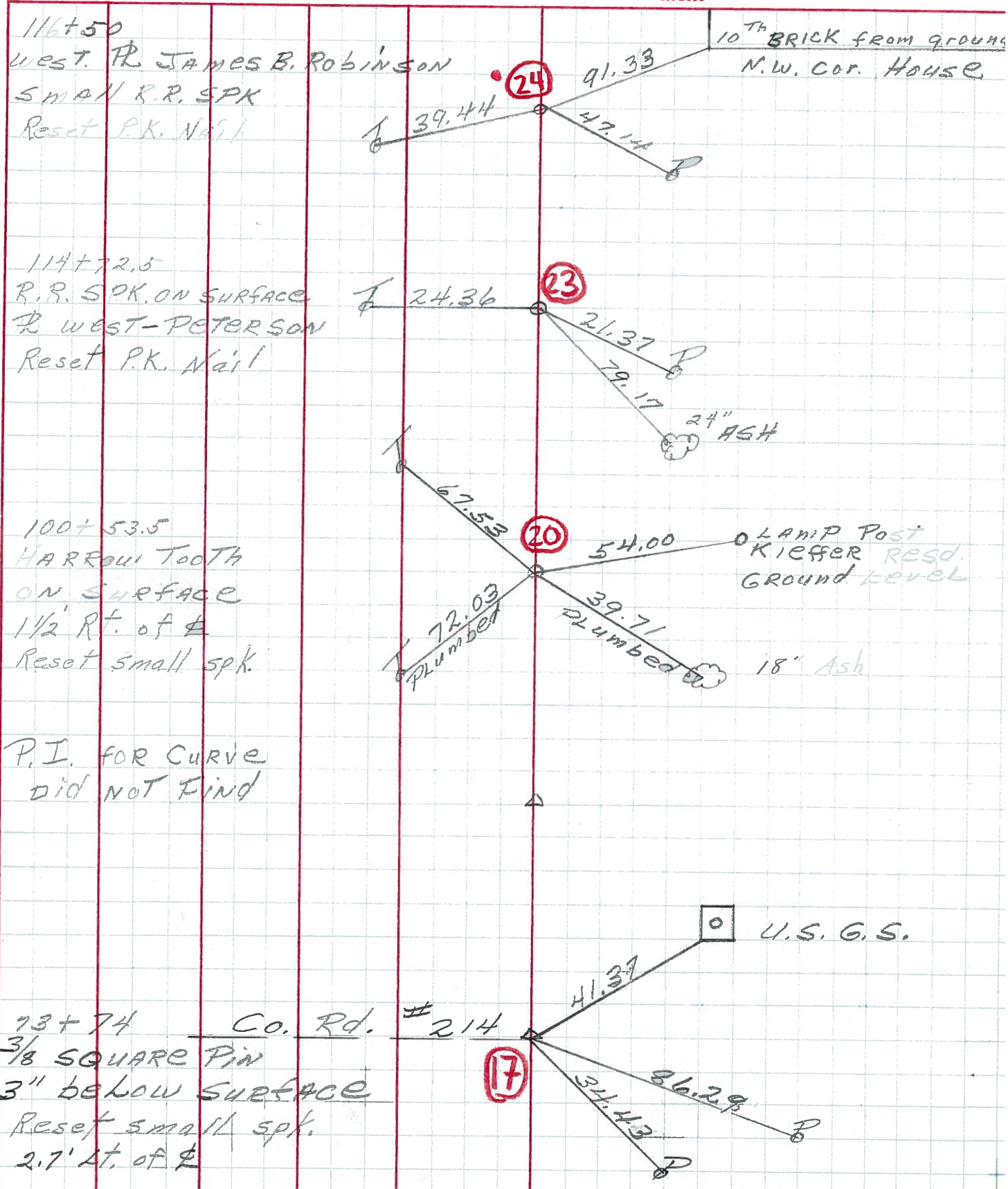
LEFT CENTER LINE RIGHT



PERSONNEL	TITLE	PERSONNEL	TITLE
MOSSER			
BARBOUR			
GEYMAN			
VINSON			

COUNTY OTTAWA DATE 8-18-71
 S. R. 105 WEATHER SUNNY
 SEC OTAGO LINE TO HARBOUR TEMP 65°

DESCRIPTION TIES FOR CONTROL POINTS JOB NO. _____



PERSONNEL	TITLE	PERSONNEL	TITLE
<u>Schneider</u>	_____	_____	_____
<u>Barbour</u>	_____	_____	_____
<u>Redding</u>	_____	_____	_____

COUNTY Ottawa DATE 6-24-68
 S. R. 105 WEATHER _____
 SEC. San. Co. Line to Oak Harbor TEMP. _____

DESCRIPTION Ties for Control Points JOB NO. _____

