

O.D.O.T. DISTRICT 2 SURVEY OFFICE (USE ONLY)

PERSONNEL

REFERENCE NO. 24 A

SHEET 27 OF 33

NOTES RHOADES DATE 7/21/21
 H.C. O'DONNELL WEATHER CLOUDY
 R.C. RHOADES TEMP. 65°

ROUTE SR 105
 COUNTY OTTAWA
 TOWNSHIP HARRIS
 SECTION 13
 T 6 N R 13 E

DWG BY RHOADES PID CHIP SEAL

TYPE MONUMENT MAG/WASHER

ON SURFACE - ~~BELOW~~ ON _____

OFFSET ☉ PAVEMENT ON _____ LT : RT

9.5' TO RT EDGE PAVEMENT

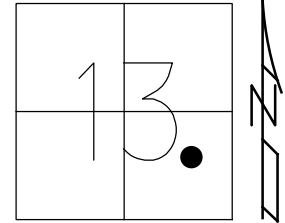
STATION: 118+72

HORIZ.DATUM: NAD83 2011

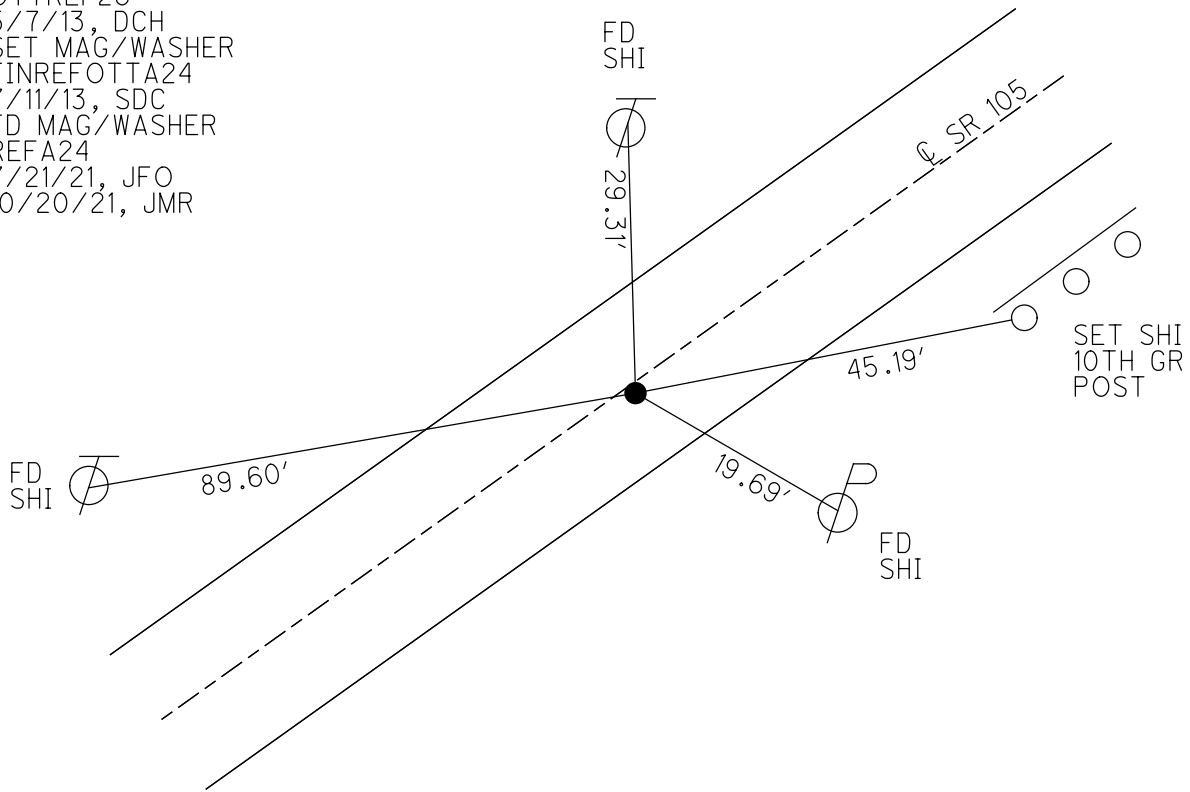
GEOID: NAVD88 2018

GRID: NORTHING: 660148.228

EASTING: 1748143.321



RECORD:
 SET P.K./WASHER
 10/12/94, MB
 FD P.K./WASHER
 4" DOWN
 OTTREF26
 5/7/13, DCH
 SET MAG/WASHER
 FINREFOTTA24
 7/11/13, SDC
 FD MAG/WASHER
 REFA24
 7/21/21, JFO
 10/20/21, JMR

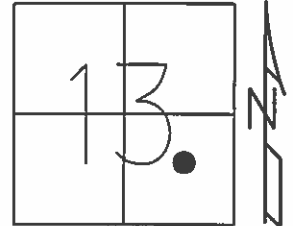


O.D.O.T. DISTRICT 2 SURVEY OFFICE (USE ONLY)

PERSONNEL	REFERENCE NO. <u>24 A</u>	SHEET <u>27</u> OF <u>33</u>
NOTES <u>HOMAN</u>	DATE <u>5/7/13</u>	ROUTE <u>SR 105</u>
H.C. <u>HOMAN</u>	WEATHER <u>CLEAR</u>	COUNTY <u>OTTAWA</u>
R.C. <u>ROUSOS</u>	TEMP. <u>70°</u>	TOWNSHIP <u>HARRIS</u>
		SECTION <u>13</u>
		T. <u>6</u> N R. <u>13</u> E

TYPE MONUMENT P.K./WASHER
~~ON SURFACE~~ - BELOW 4"
~~LEFT~~ - Q PAV'T - RIGHT 1.0'
9.5' TO RT EDGE PAVEMENT
 S.L.M. 118+72

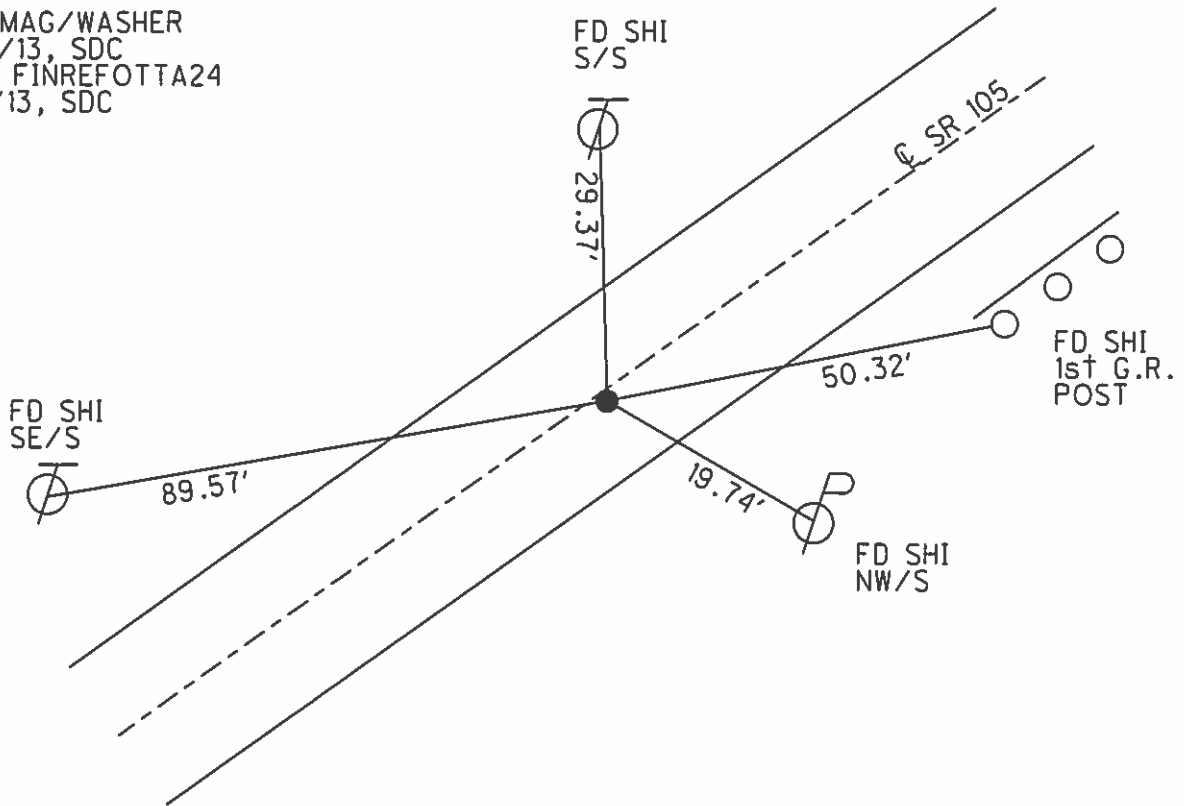
Grid: Northing: 660148.24 Easting: 1748143.181



RESET P.K./WASHER
 10/12/94, MB

FD P.K./WASHER
 GPS, OTTREF26

SET MAG/WASHER
 7/10/13, SDC
 GPS, FINREFOTTA24
 7/11/13, SDC



O.D.O.T. DISTRICT 2 SURVEY OFFICE

PERSONNEL

REFERENCE NO. 24-A

SHEET 22 OF 26

NOTES BARNHISEL

H.C. CORDES

R.C. SLOVAK

DATE 9-15-94

WEATHER SUNNY

TEMP. +81°

ROUTE 105

COUNTY OTTAWA

TOWNSHIP HARRIS

SECTION 13

T. 6 N R. 13 E

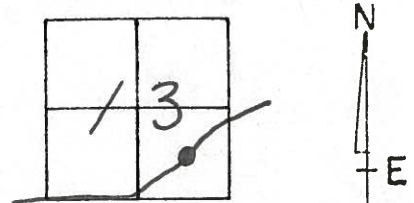
TYPE MONUMENT P.K. & WASHER

~~SET~~ EDGE - BELOW 4"

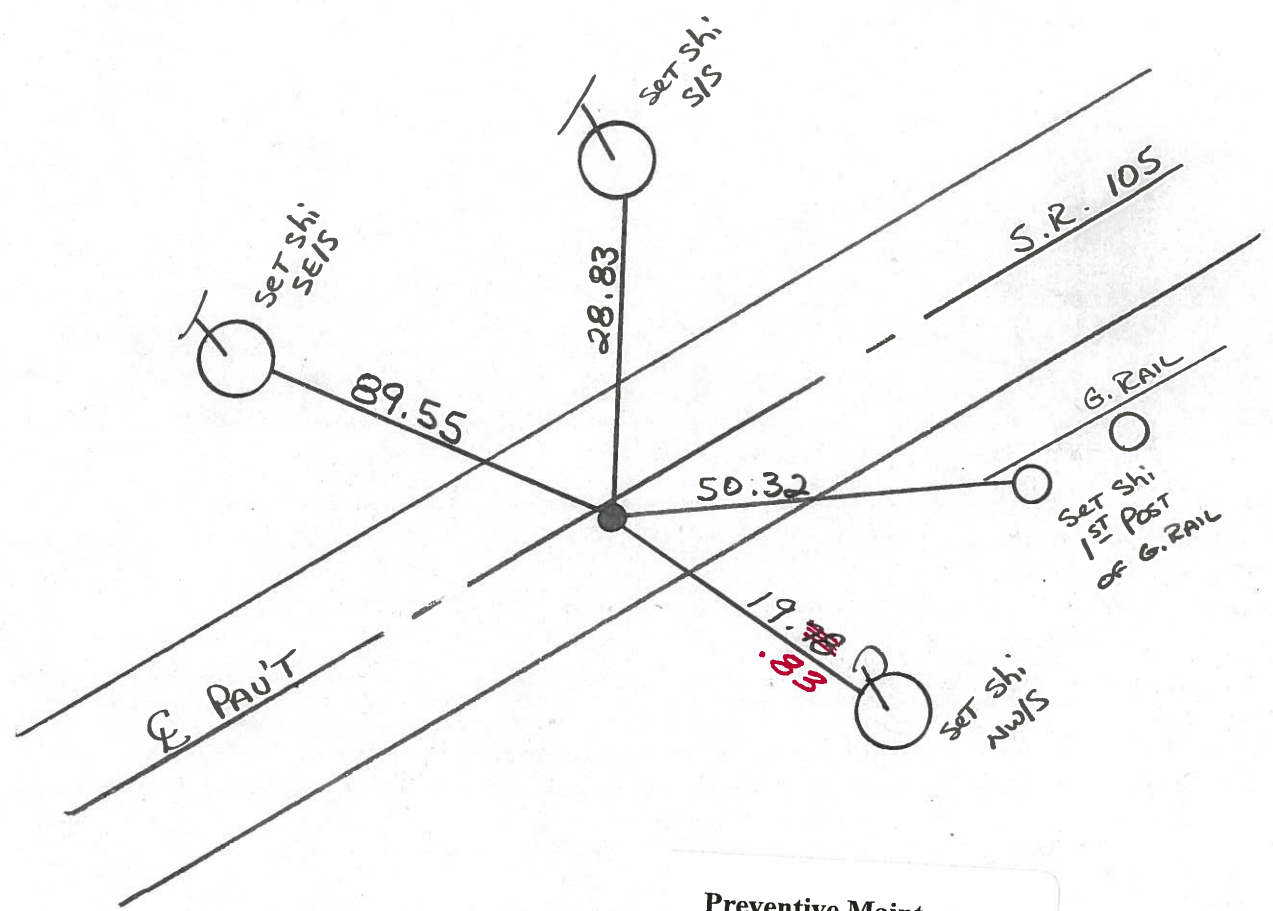
~~SET~~ E. PAV'T. - RIGHT 1.0

9.5 TO RT EDGE PAVEMENT

S.L.M. 118+72

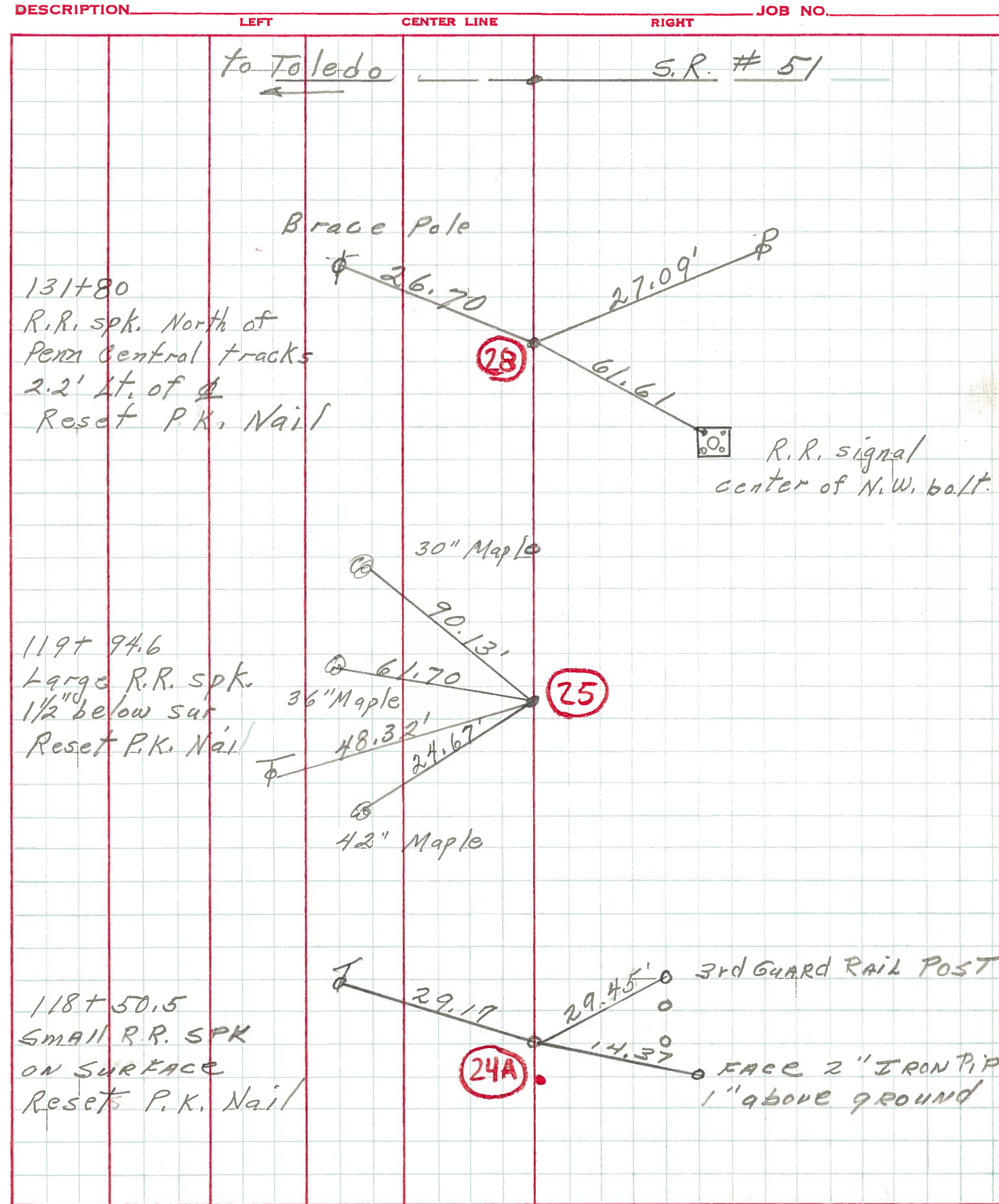


Reset P.K. & WASHER
10-12-94
m.B.



Preventive Maintenance
Microsurfaced 2000
Existing Point Uncovered
Date 5-8-2000

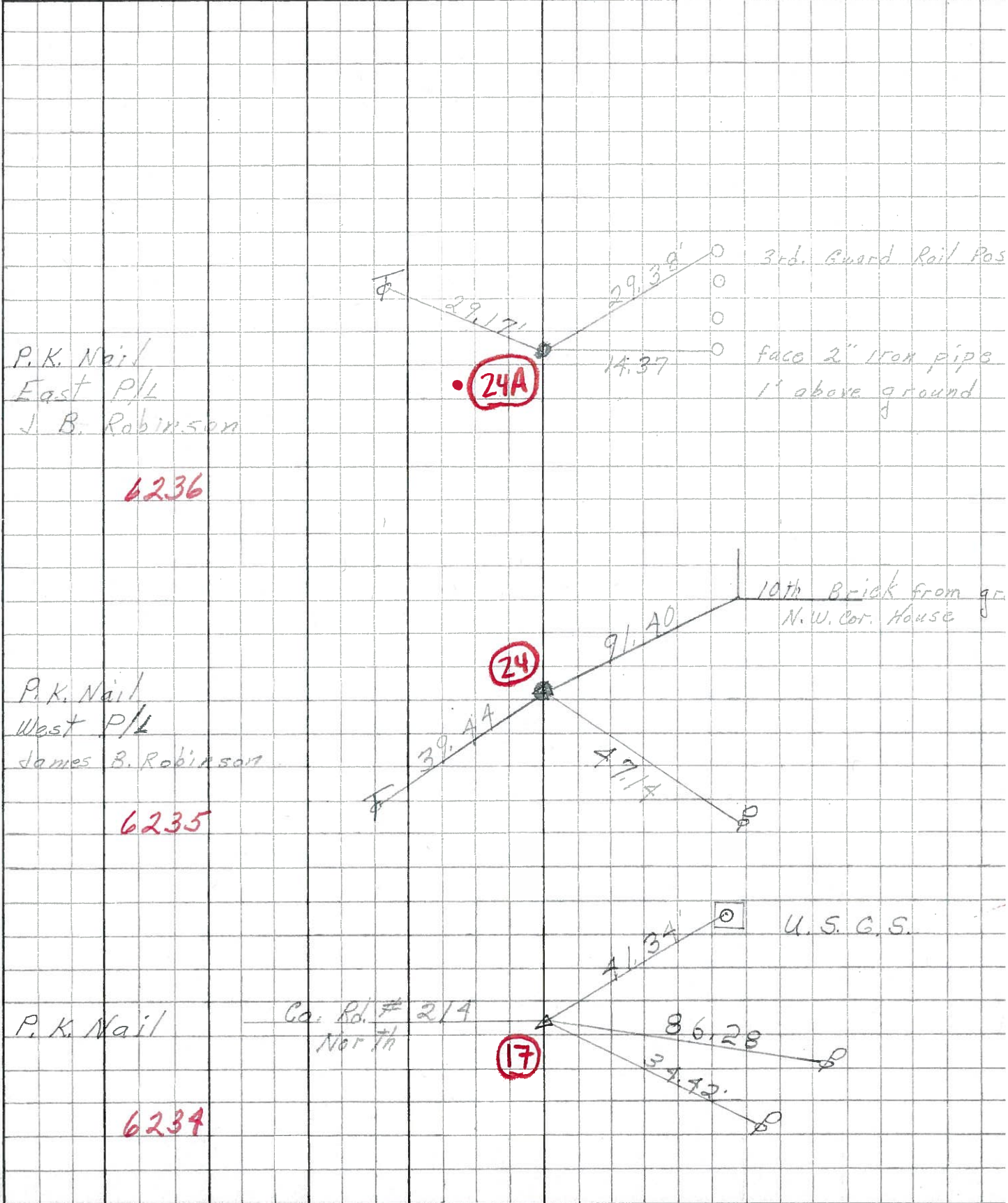
PERSONNEL	TITLE	PERSONNEL	TITLE	COUNTY	DATE
				O HAWA	8-18-71
				S. R.	WEATHER
				105	SCINNY
				SEC. O.H. CO LINE TO HARBER	TEMP. 70°



PERSONNEL	TITLE	PERSONNEL	TITLE
Schneider			
Barbour			
Redding			

COUNTY Ottawa DATE 6-24-68
 S. R. 105 WEATHER _____
 SEC. San. Co. Line to Oak Harbor TEMP. _____

DESCRIPTION Ties for Control Points JOB NO. _____
 LEFT CENTER LINE RIGHT



6236

6235

6234