

O.D.O.T. DISTRICT 2 SURVEY OFFICE (USE ONLY)

PERSONNEL

REFERENCE NO. 28

SHEET 32 OF 33

NOTES RHOADES

DATE 7/21/21

ROUTE SR 105

H.C. O'DONNELL

WEATHER CLOUDY

COUNTY OTTAWA

R.C. RHOADES

TEMP. 65°

TOWNSHIP HARRIS

SECTION 13

DWG BY RHOADES PID CHIP SEAL

T 6 N R 13 E

TYPE MONUMENT MAG/WASHER

ON SURFACE - ~~BELOW~~ ON

OFFSET Q PAVEMENT 1.8' LT : ~~RT~~

8.3' TO LT EDGE PAVEMENT

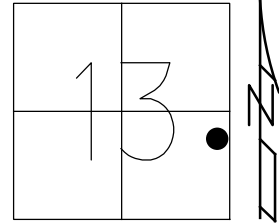
STATION: 132+15

HORIZ.DATUM: NAD83 2011

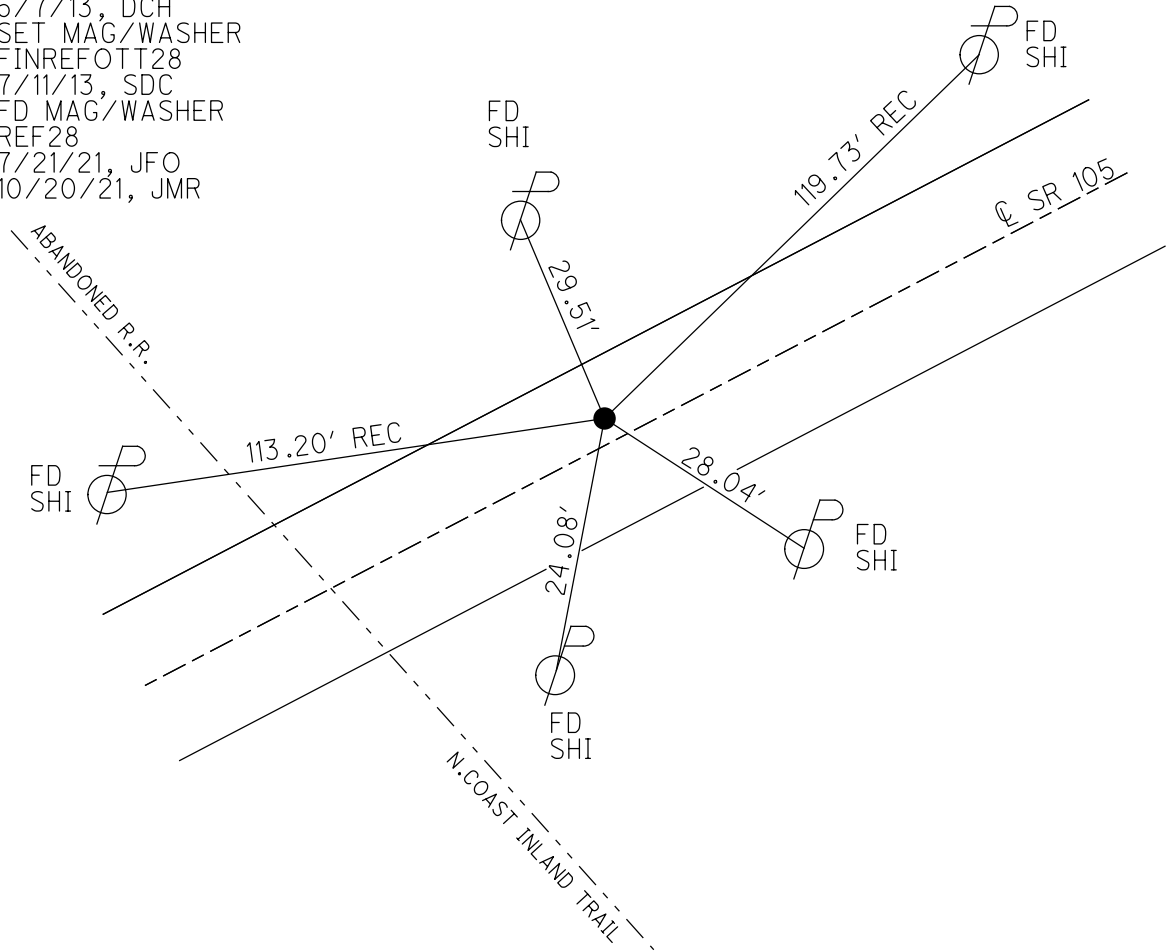
GEOID: NAVD88 2018

GRID: NORTHING: 660765.178

EASTING: 1749314.953



RECORD:
 SET P.K./WASHER
 9/15/94, MB
 FD P.K./WASHER
 OTTREF30
 5/7/13, DCH
 SET MAG/WASHER
 FINREFOTT28
 7/11/13, SDC
 FD MAG/WASHER
 REF28
 7/21/21, JFO
 10/20/21, JMR

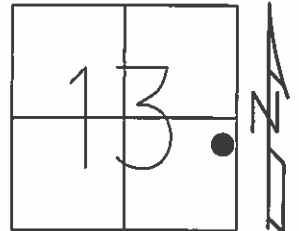


O.D.O.T. DISTRICT 2 SURVEY OFFICE (USE ONLY)

PERSONNEL	REFERENCE NO. <u>28</u>	SHEET <u>32</u> OF <u>33</u>
NOTES <u>HOMAN</u>	DATE <u>5/7/13</u>	ROUTE <u>SR 105</u>
H.C. <u>HOMAN</u>	WEATHER <u>CLEAR</u>	COUNTY <u>OTTAWA</u>
R.C. <u>ROUSOS</u>	TEMP. <u>70°</u>	TOWNSHIP <u>HARRIS</u>
		SECTION <u>13</u>
		T <u>6</u> N R <u>13</u> E

TYPE MONUMENT P.K./WASHER
 ON SURFACE - ~~BELOW~~ ON
 LEFT - Q PAV'T - ~~RIGHT~~ 1.8'
8.3' TO LT EDGE PAVEMENT
 S.L.M. 132+15

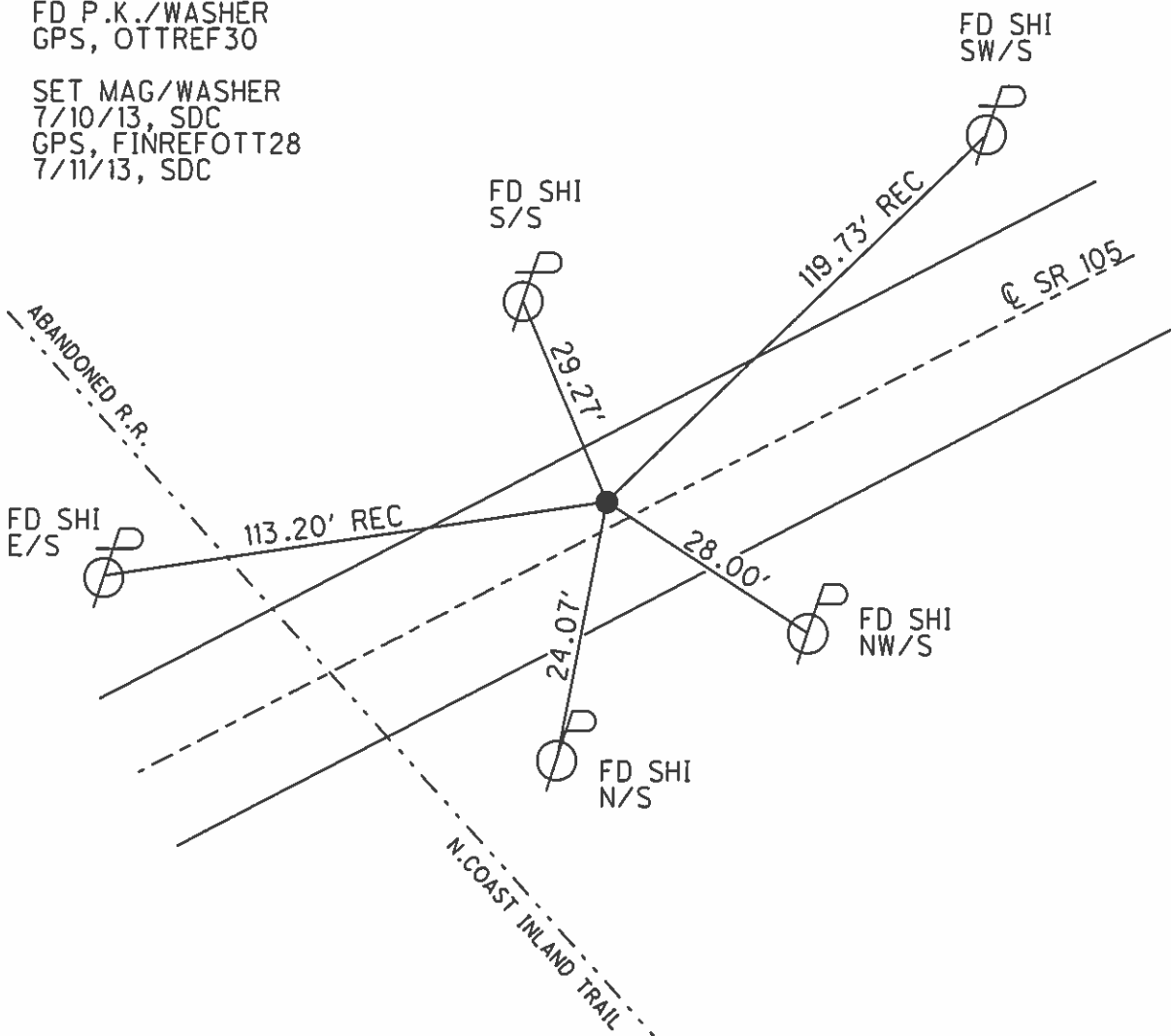
Grid: Northing: 660765.173 Easting: 1749314.945



RESET P.K./WASHER
 9/15/94, MB

FD P.K./WASHER
 GPS, OTTREF30

SET MAG/WASHER
 7/10/13, SDC
 GPS, FINREFOTT28
 7/11/13, SDC



O.D.O.T. DISTRICT 2 SURVEY OFFICE

PERSONNEL _____

REFERENCE NO. 28

SHEET 26 OF 26

NOTES BARNHISEL

H.C. CORDES

DATE 9-15-94

ROUTE 105

R.C. SLOVAK

WEATHER SUNNY

COUNTY OTTAWA

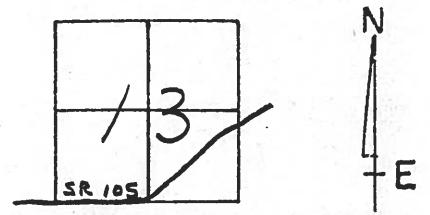
TEMP. +81°

TOWNSHIP HARRIS

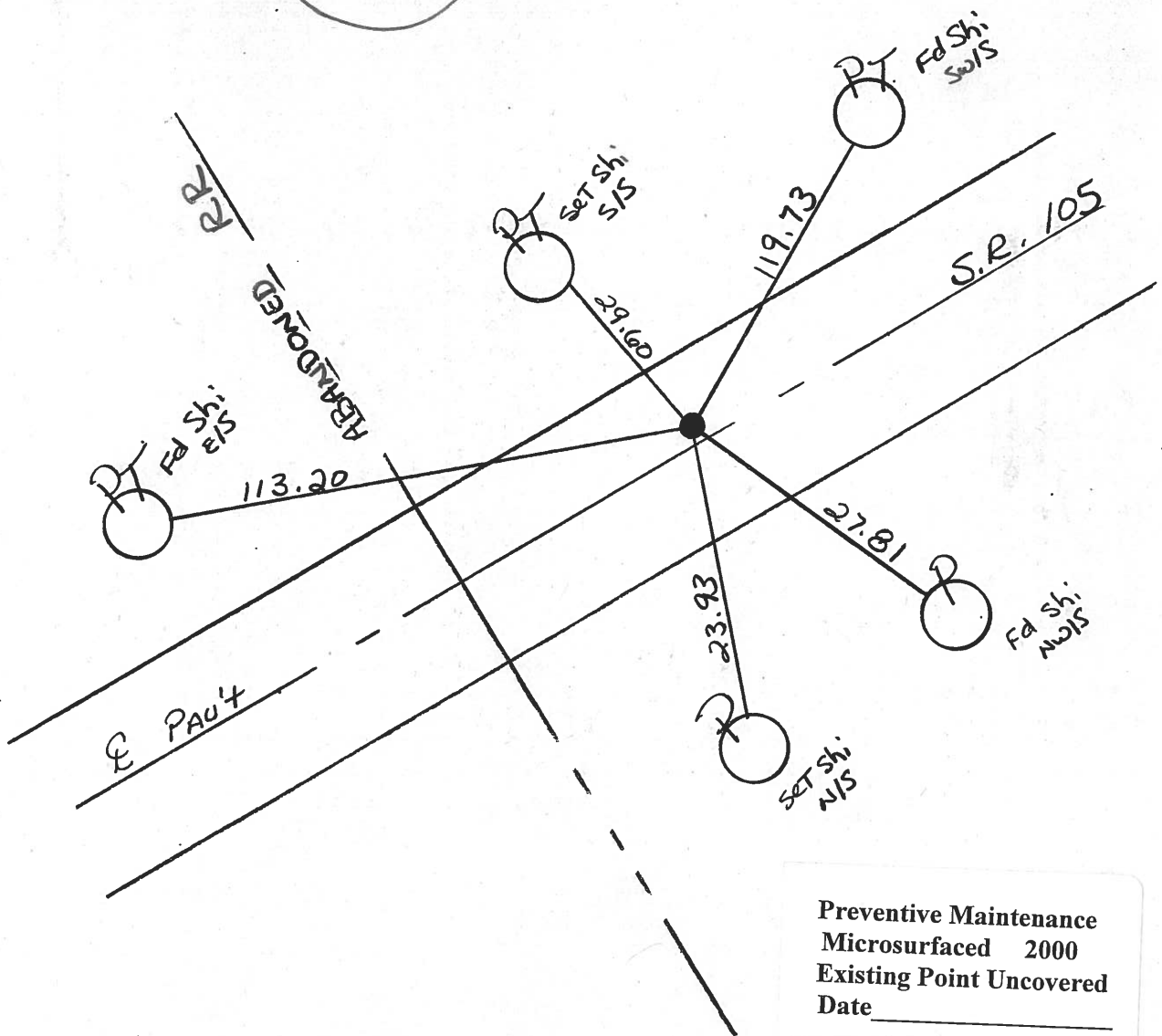
SECTION 13

T 6 N R 13 E

TYPE MONUMENT P.K. & WASHER
 ON SURFACE - ~~BELOW~~ yes
 LEFT- & PAV'T. - ~~RIGHT~~ 1.8
8.3 TO LT EDGE PAVEMENT
 S.L.M. 132+15



Reset P.K. & WASHER
 9-15-94
 m.B.



Preventive Maintenance
 Microsurfaced 2000
 Existing Point Uncovered
 Date _____

O.D.O.T. DISTRICT 2 SURVEY OFFICE

PERSONNEL

REFERENCE NO. 28

SHEET 13 OF 27

NOTES HOFFMAN

H.C. "

DATE 2-20-86

ROUTE SR 105

R.C. LOEHKE

WEATHER OVERCAST

COUNTY OTTAWA

TEMP. 35°

TOWNSHIP HARRIS

SECTION 13

T6 N R 13 E

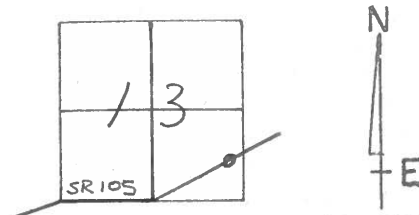
TYPE MONUMENT P.K./WASHER

ON SURFACE - ~~BELOW~~ yes

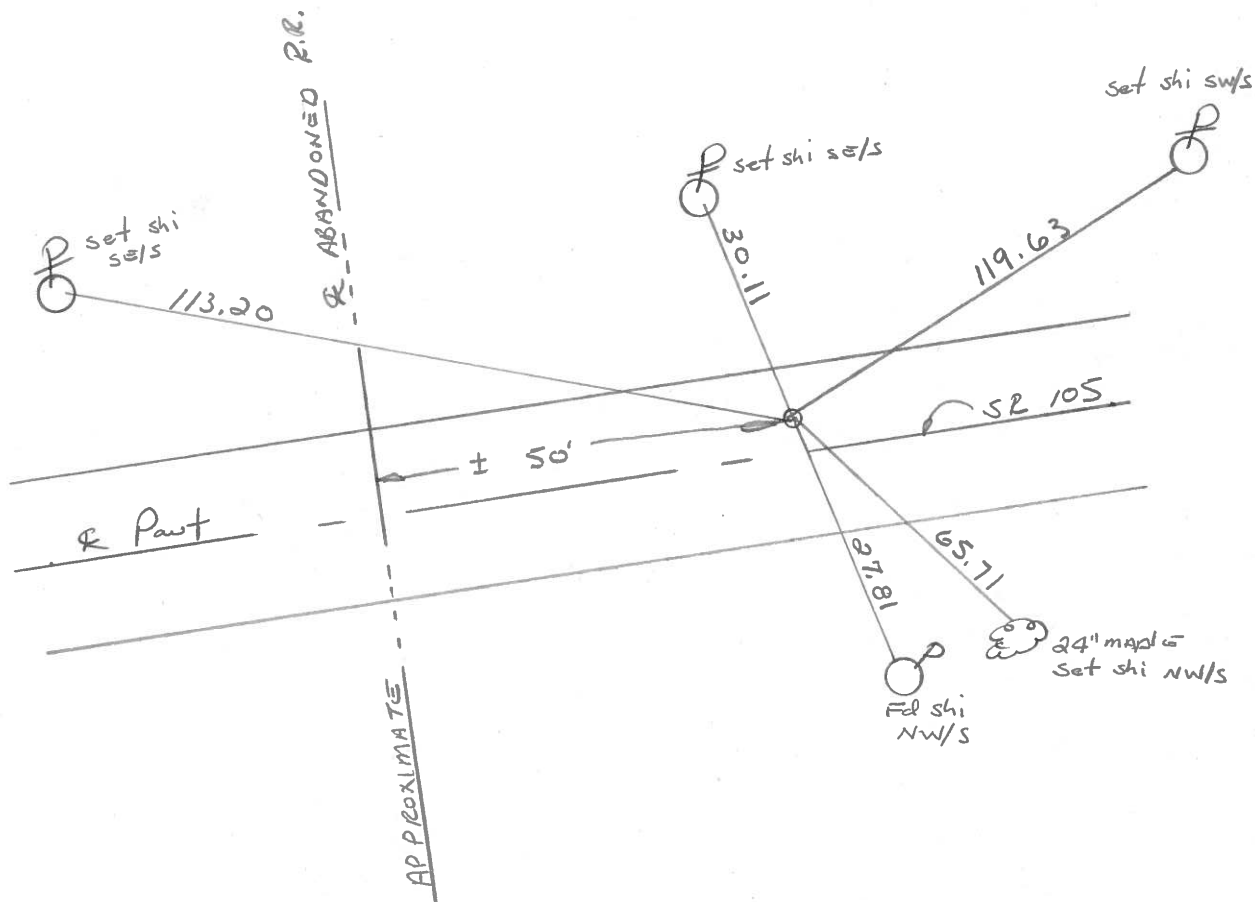
LEFT - ~~C PAV'T.~~ - RIGHT 2.4'

6.6' TO LT. EDGE PAVEMENT

S.L.M. 131+87 (Resurfacing STA.)



STA. 131+85.71



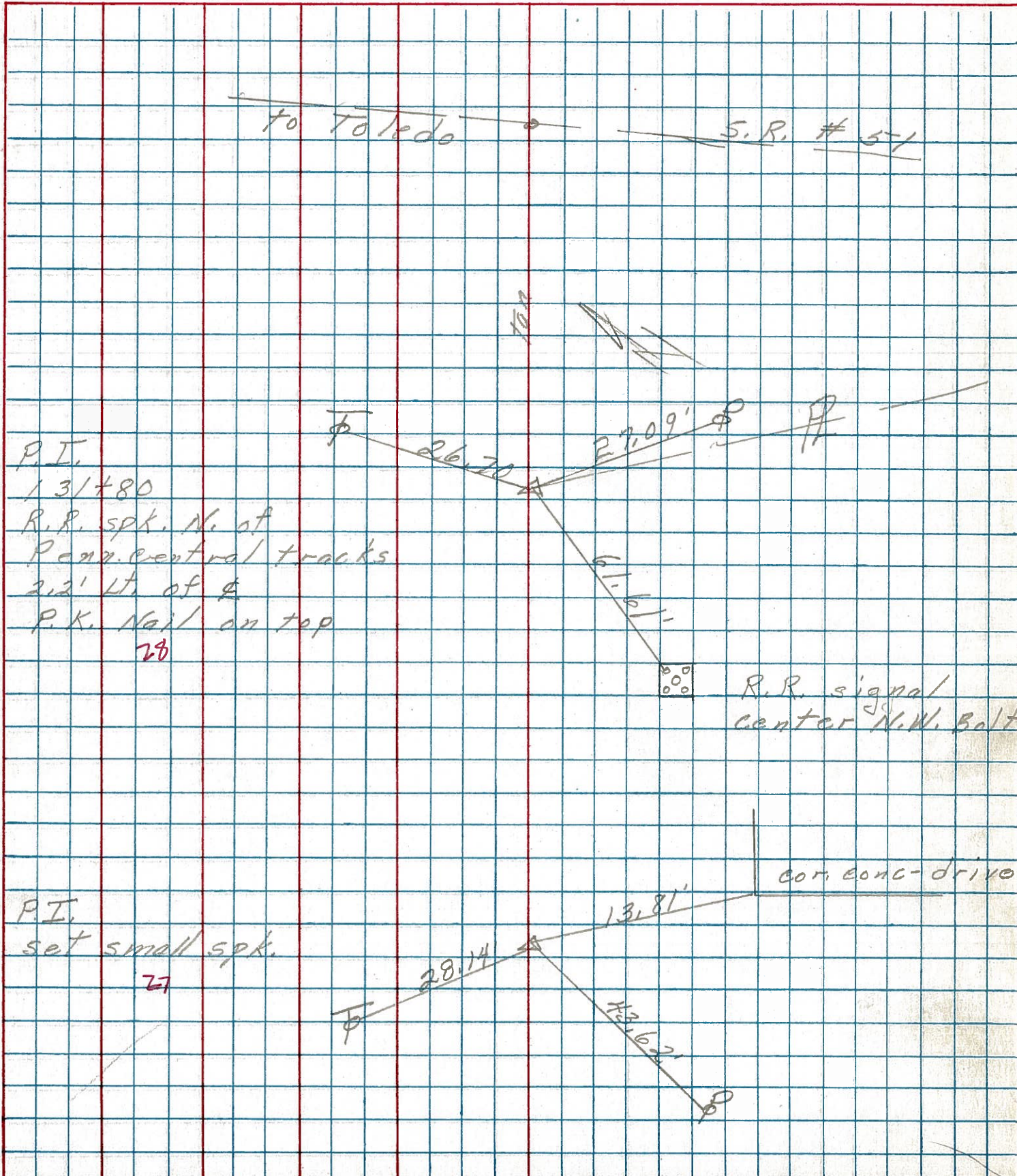
PERSONNEL TITLE PERSONNEL TITLE

COUNTY Ottawa DATE 8-8-74

S. R. 105 WEATHER cloudy

SEC. 13 TEMP. 85°

DESCRIPTION Harris Twp. JOB NO.



PERSONNEL	TITLE	PERSONNEL	TITLE

COUNTY OHAWA WEATHER SUNNY
 S. R. 105 TEMP 70°
 SEC OTT. CO LINE TO OAK HARBAR

