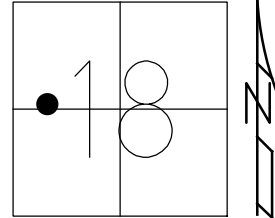


O.D.O.T. DISTRICT 2 SURVEY OFFICE (USE ONLY)

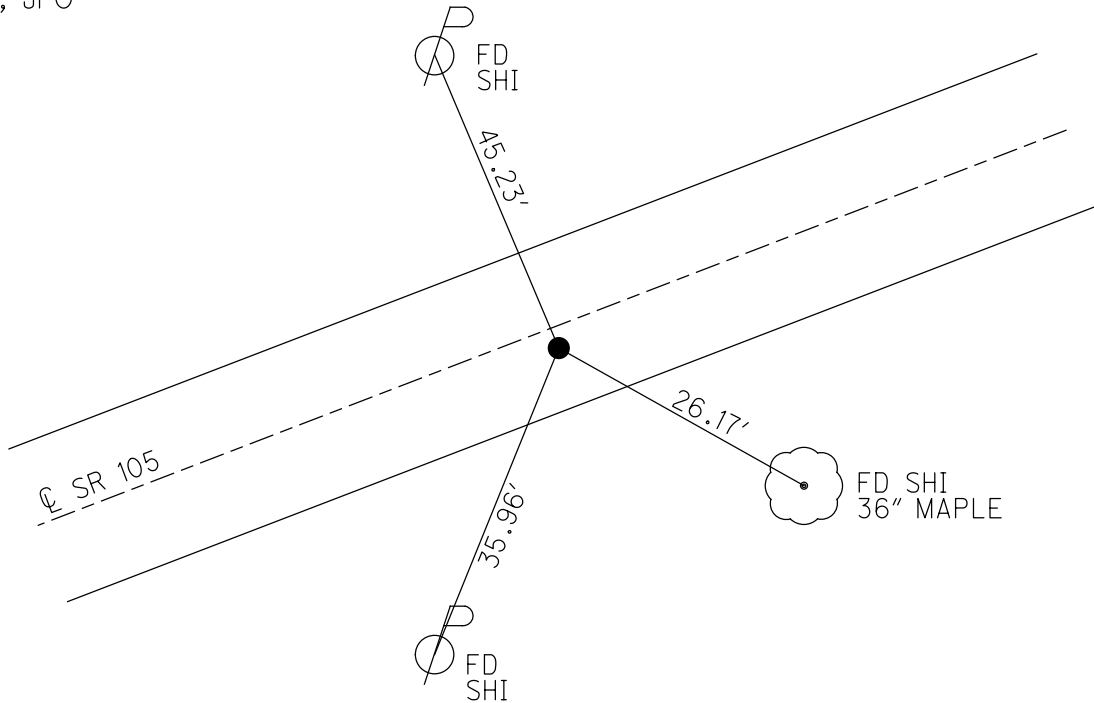
PERSONNEL _____ REFERENCE NO. 29 SHEET 1 OF 63
 NOTES RHOADES DATE 7-29-19 ROUTE SR 105
 H.C. O'DONNELL WEATHER SUNNY COUNTY OTTAWA
 R.C. AUBLE TEMP. 81° TOWNSHIP HARRIS
 _____ MILLER _____ SECTION 18
 DWG BY BALBAUGH PID 92131 T 6 N R 14 E

TYPE MONUMENT P.K./WASHER
 ON SURFACE - ~~BELOW~~ ON _____
 OFFSET 6.0' TO RT EDGE PAVEMENT
 OFFSET 4.4' RT : RT
 STATION: 148+98.20



HORZ. DATUM: NAD83 2011 GEOID: 2012A
 GRID: NORTHING: 661511.549 EASTING: 1750836.655

RECORD: P.I.
 $\Delta = 08^\circ 44' 00''$ LT
 FD P.K./WASHER
 4/3/00, MC
 SET P.K./WASHER
 6/21/00, KPM
 FD P.K./WASHER
 REF29
 4/5/18, JFO
 FD P.K./WASHER
 7/29/19, JFO
 SET MAG/WASHER
 11/15/19, JFO



O.D.O.T. DISTRICT 2 SURVEY OFFICE

PERSONNEL

REFERENCE NO. 29

SHEET 2 OF 26

NOTES K. MOSER

H.C. M. CANTERBURY

DATE 4-3-00

ROUTE S.R.105

R.C. M. BARNHISEL

WEATHER Sunny

COUNTY OTTAWA

TEMP. +50°F

TOWNSHIP HARRIS

SECTION 18

T6 N R 14 E

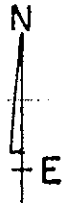
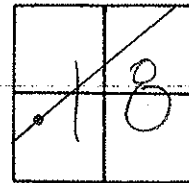
TYPE MONUMENT PK & WASHER

ON SURFACE - ~~BELOW~~ ON SURFACE

LEFT - ~~C~~ PAV'T. - RIGHT 4.4'

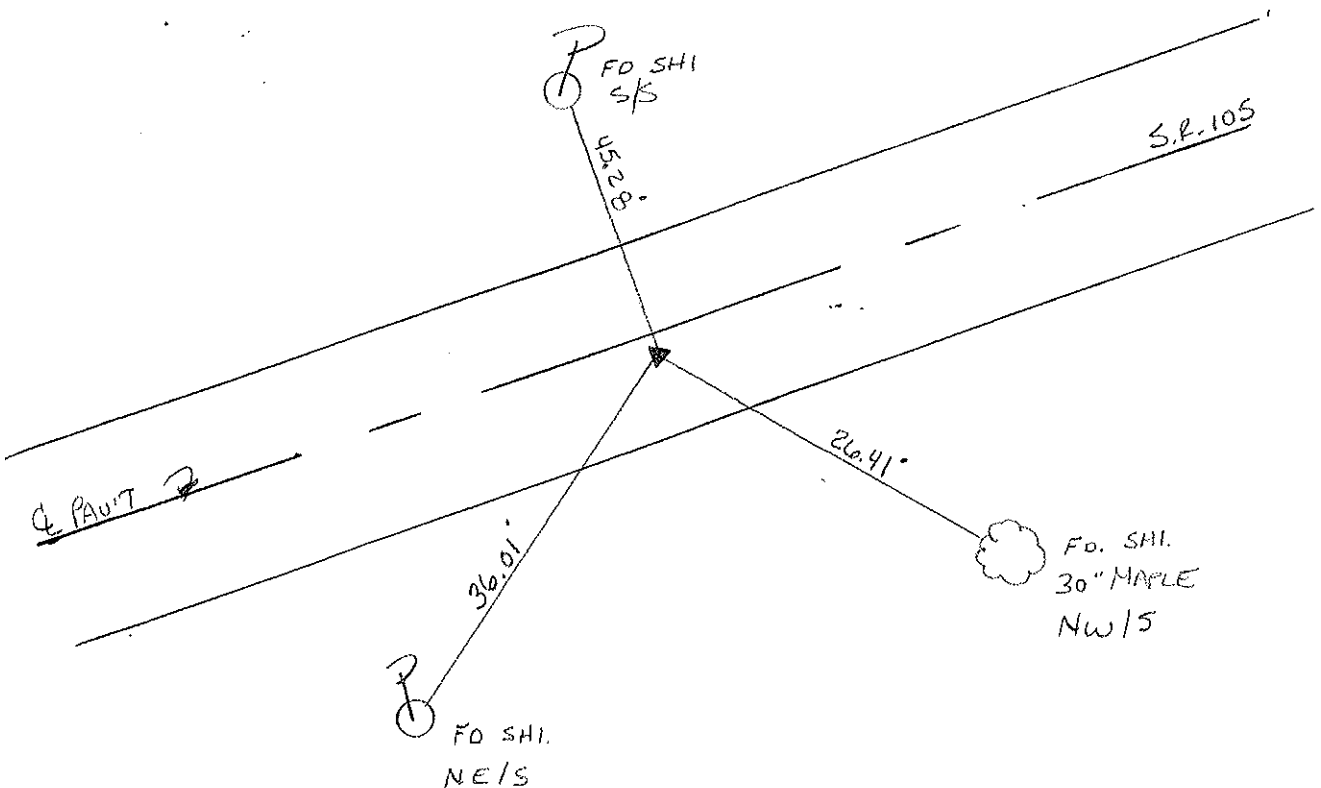
6.0 TO RT. EDGE PAVEMENT

S.L.M. 149+69



RECORD P.I.
 $\Delta = 08^{\circ}44'00''$ LT.

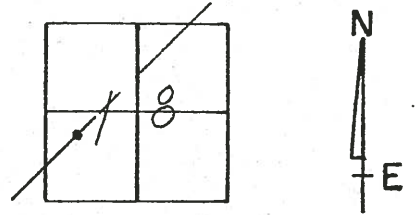
RESEST PK & WASHER
 6-21-00
 KPM




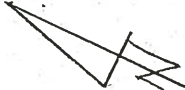
O.D.O.T. DISTRICT 2 SURVEY OFFICE

PERSONNEL	REFERENCE NO. <u>29</u>	SHEET _____ OF _____
NOTES <u>Cronin</u>	DRAWN <u>9/23/87</u>	ROUTE <u>#105</u>
H.C. <u>Ripple</u>	DATE <u>5/26/87</u>	COUNTY <u>Ottawa</u>
R.C. <u>Barbour</u>	WEATHER <u>sunny</u>	TOWNSHIP <u>Harris</u>
<u>Geyman</u>	TEMP. <u>67°</u>	SECTION <u>18</u>
		T. <u>6 N</u> R. <u>14 E</u>

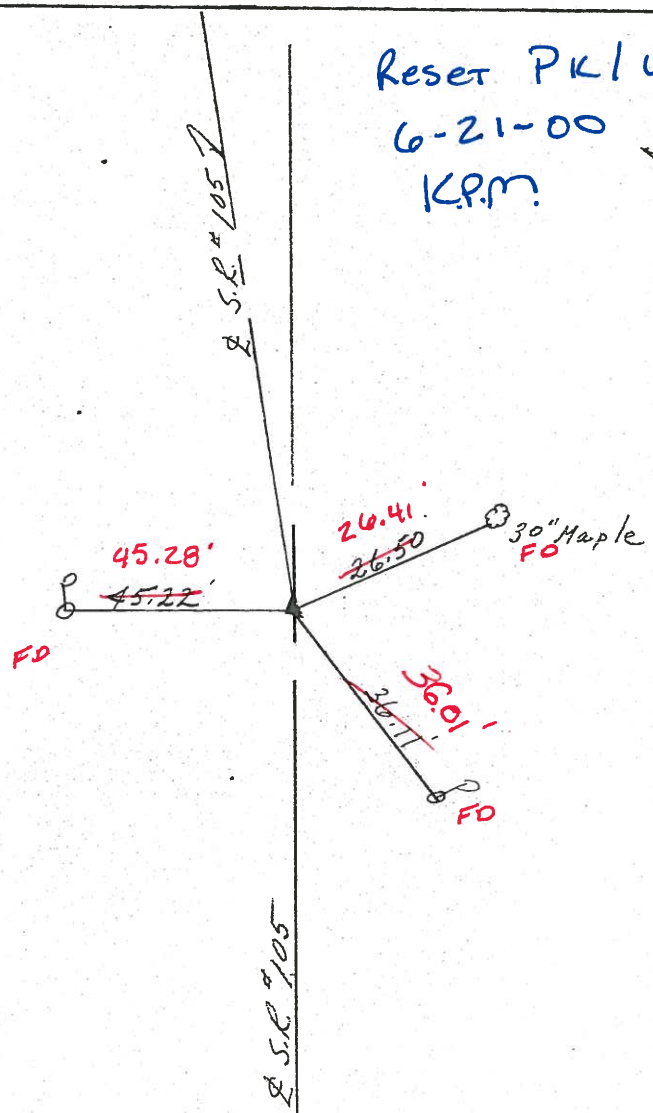
TYPE MONUMENT P.K. Washer
 ON SURFACE - ~~BELOW~~ on surface
 LEFT - 0 PAV'T. - RIGHT 5.1 Rt. & Pav't **4.4 Rt**
6.0 TO Rt EDGE PAVEMENT
 S.L.M. 149+227 **149+289**



MARK. ~~RC~~
 Bill & RCHC
 Kevin. 
 +50°F
 Sunny

Reset PK/WASHER
 6-21-00
 K.P.M. 

P.I
 $\Delta = 08^{\circ}44'00''$ Lt.
P.K. Washer at top P.K.
below surface



O.D.O.T. DISTRICT 2 SURVEY OFFICE

PERSONNEL

NOTES Cronin
 H.C. Ripple
 R.C. Barbour
Geyman

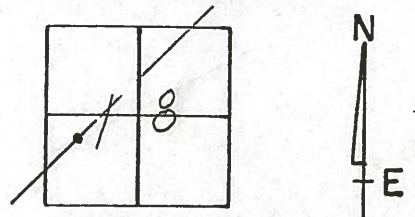
REFERENCE NO. 29

DRAWN 9/23/87
 DATE 5/26/87
 WEATHER sunny
 TEMP. 67°

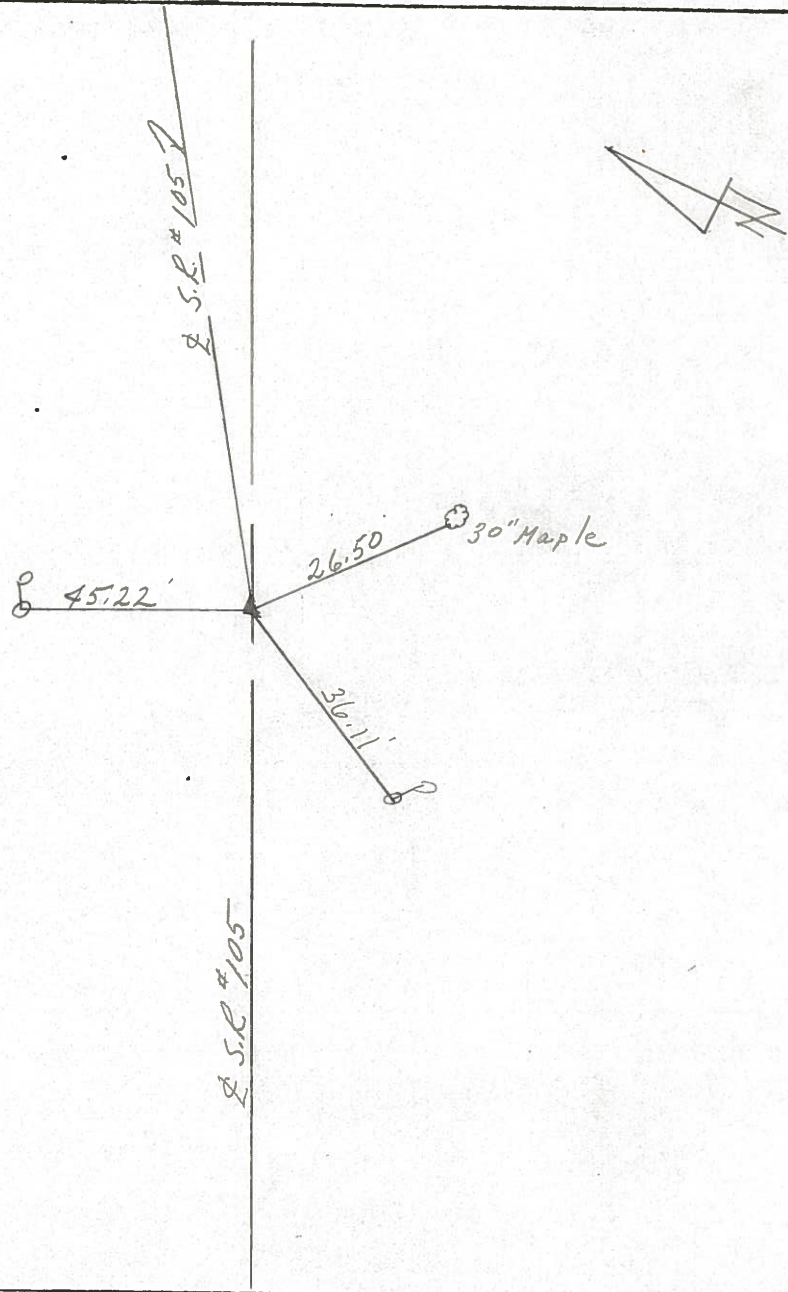
SHEET OF

ROUTE #105
 COUNTY Ottawa
 TOWNSHIP Harris
 SECTION 18
T 6 N R 14 E

TYPE MONUMENT P.K. washer
 ON SURFACE - BELOW on surface
 LEFT - ☉ PAV'T. - RIGHT 5.1 Rt. & Pav't.
 TO EDGE PAVEMENT
 S.L.M. 149+22.7

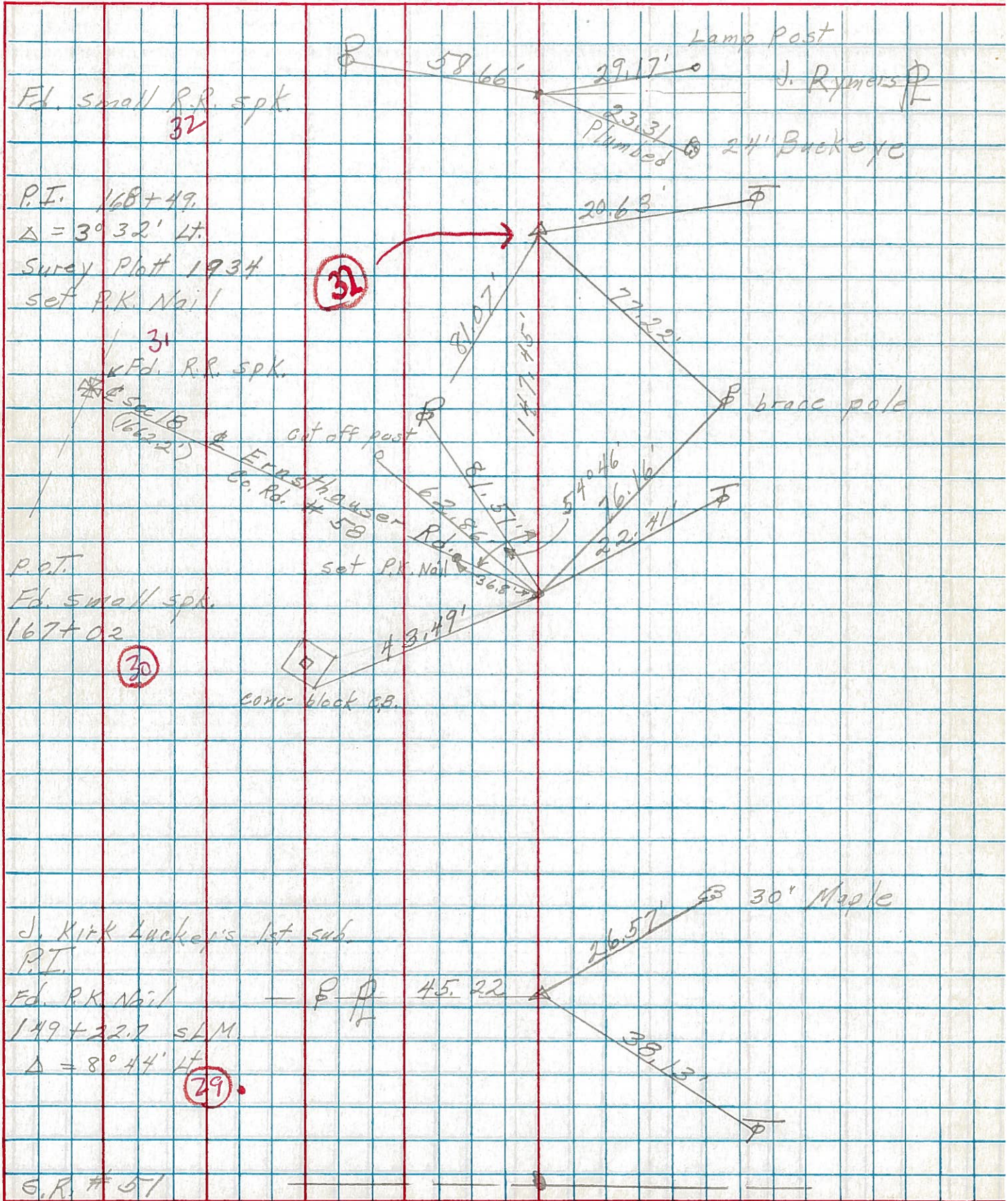


P.I.
Δ = 08°44'00" Lt.
P.K. washer at top P.K.
below surface



PERSONNEL	TITLE	PERSONNEL	TITLE	COUNTY	DATE
Schneider				Ottawa	1-24-74
Mosser				S. R. 105	WEATHER Fair - cool
Barbour				SEC. N.W. 1/4 sec 8	TEMP. 30
Geyman					

DESCRIPTION Harris Twp. S.R. #51 to Oak Harbor JOB NO. _____



S.R. #51