

O.D.O.T. DISTRICT 2 SURVEY OFFICE (USE ONLY)

PERSONNEL

REFERENCE NO. 30

SHEET 2 OF 63

NOTES RHOADES  
 H.C. O'DONNELL  
 R.C. AUBLE  
MILLER

DATE 7/29/19  
 WEATHER SUNNY  
 TEMP. 81°

ROUTE SR 105  
 COUNTY OTTAWA  
 TOWNSHIP HARRIS  
 SECTION 18

DWG BY BALBAUGH PID 92131

T 6 N R 14 E

TYPE MONUMENT P.K./WASHER

ON SURFACE - ~~BELOW~~ ON

OFFSET  $\varnothing$  PAVEMENT ON ~~LT~~ : ~~RT~~

9.8' TO RT EDGE PAVEMENT

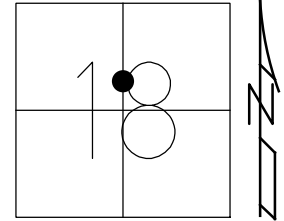
STATION: 166+77.97

HORZ.DATUM: NAD83 2011

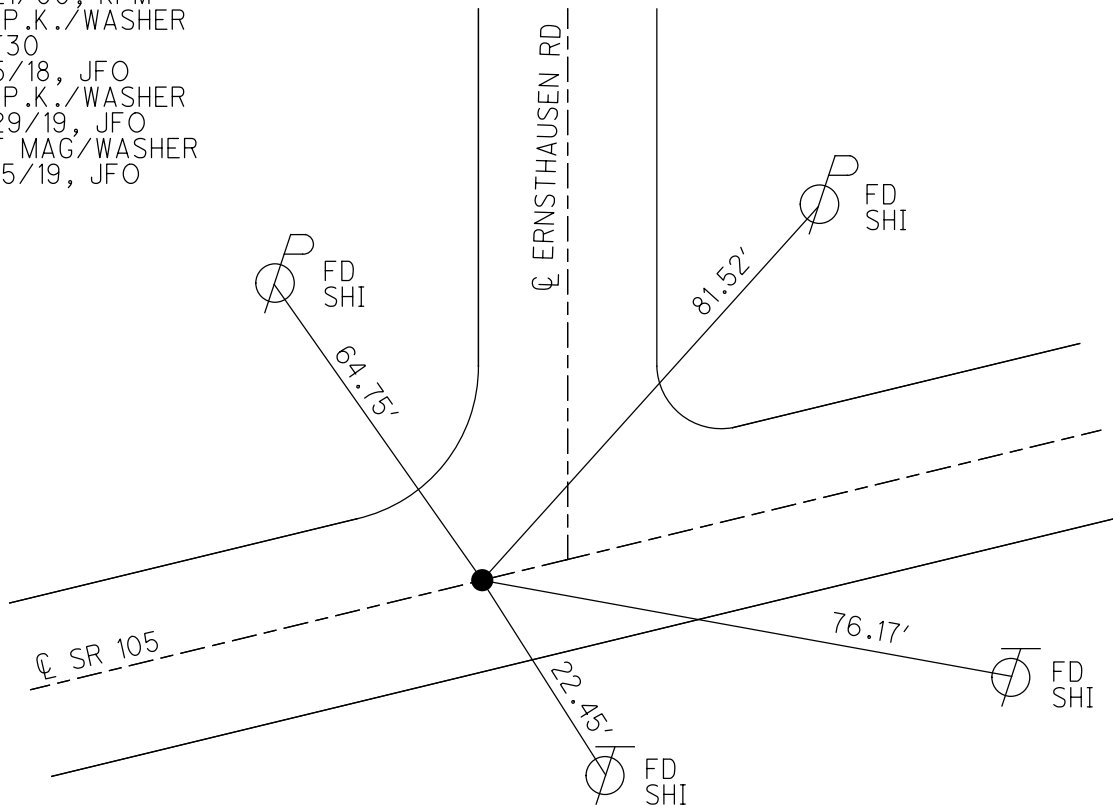
GEOID: 2012A

GRID: NORTHING: 662537.957

EASTING: 1752290.650



RECORD: P.O.T.  
 FD P.K./WASHER  
 4/3/00, MC  
 RESET P.K./WASHER  
 6/21/00, KPM  
 FD P.K./WASHER  
 REF30  
 4/5/18, JFO  
 FD P.K./WASHER  
 7/29/19, JFO  
 SET MAG/WASHER  
 11/15/19, JFO



# O.D.O.T. DISTRICT 2 SURVEY OFFICE

PERSONNEL

REFERENCE NO. 30

SHEET 3 OF 96

NOTES K. Moser

H.C. M. CAMVERBURY

R.C. M. BARNHISEL

DATE 4-3-00

WEATHER Sunny

TEMP. +50°F

ROUTE S.R. 105

COUNTY OTTAWA

TOWNSHIP HARRIS

SECTION 18

T6 N R 14 E

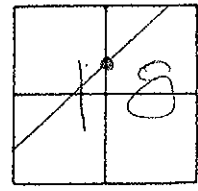
TYPE MONUMENT PK & WASHER

ON SURFACE - BELOW ON SURFACE

LEFT - & PAV'T. - RIGHT & NORTH & & S.R. 105

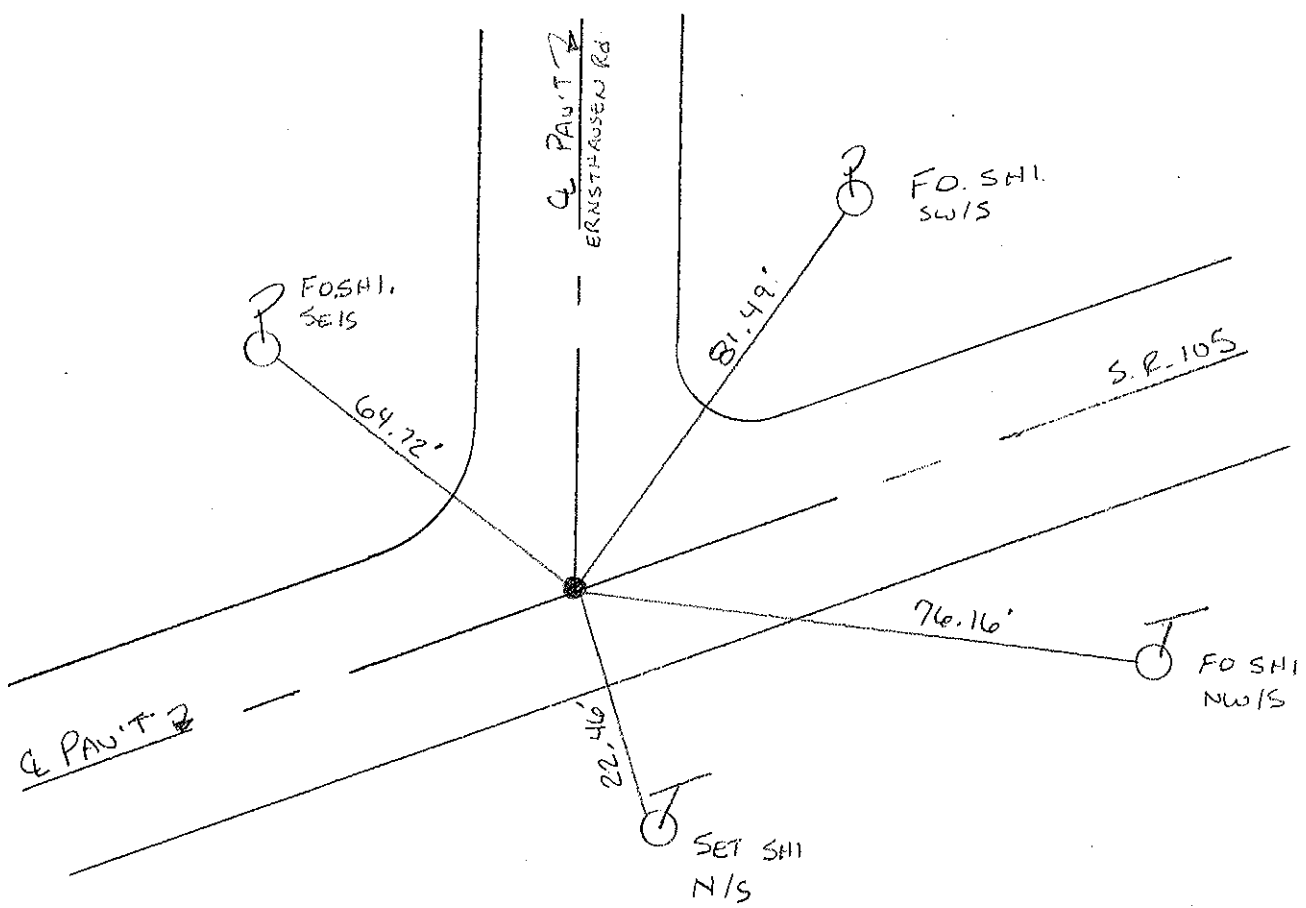
9.8 TO PT. EDGE PAVEMENT

S.L.M. 167+25



RECORDS: P.O.T.

RESET PK/WASHER  
 6:21-00  
 K.P.M.



# O.D.O.T. DISTRICT 2 SURVEY OFFICE

PERSONNEL

REFERENCE NO. 30

SHEET      OF     

NOTES Cronin

DRAWN 9/23/87

H.C. Rypple

DATE 5/26/87

ROUTE #105

R.C. Barbour

WEATHER sunny

COUNTY Ottawa

Geyman

TEMP. 67°

TOWNSHIP Harris

SECTION 18

T 6 N R 14 E

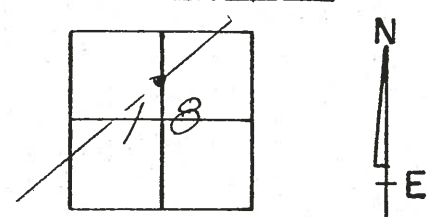
TYPE MONUMENT P.K. & washer

ON SURFACE - BELOW on surface

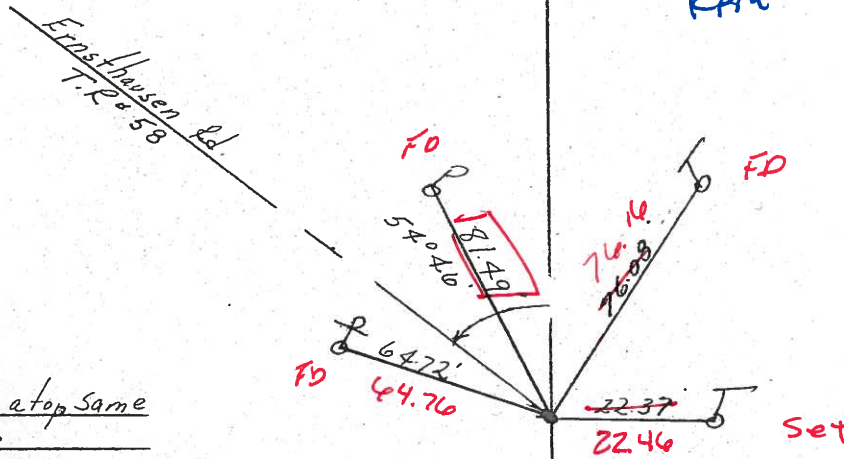
LEFT - ☉ PAV'T. - RIGHT ☉ Pav't.

9.8 TO RT EDGE PAVEMENT

S.L.M. 167+02 167+25



Reset PK WASHER  
6-21-00  
KAM



P.O.T.  
P.K. & washer at top same  
below surface

S.R. #105

# O.D.O.T. DISTRICT 2 SURVEY OFFICE

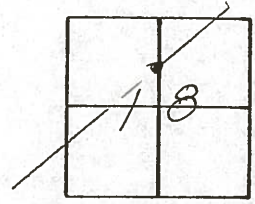
PERSONNEL

NOTES Croinin  
H.C. Ripple  
R.C. Garbour  
Geyman

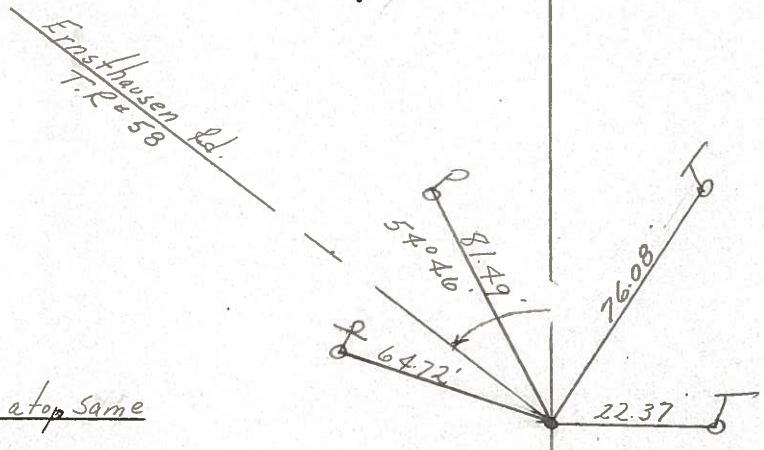
REFERENCE NO. 30  
DRAWN 9/23/87  
DATE 5/26/87  
WEATHER sunny  
TEMP. 67°

SHEET      OF       
ROUTE #105  
COUNTY Ottawa  
TOWNSHIP Harris  
SECTION 18  
T 6 N R 14 E

TYPE MONUMENT P.K. & washer  
ON SURFACE - BELOW on surface  
LEFT - ☉ PAV'T. - RIGHT & Pav't.  
TO      EDGE PAVEMENT  
S.L.M. 167+02



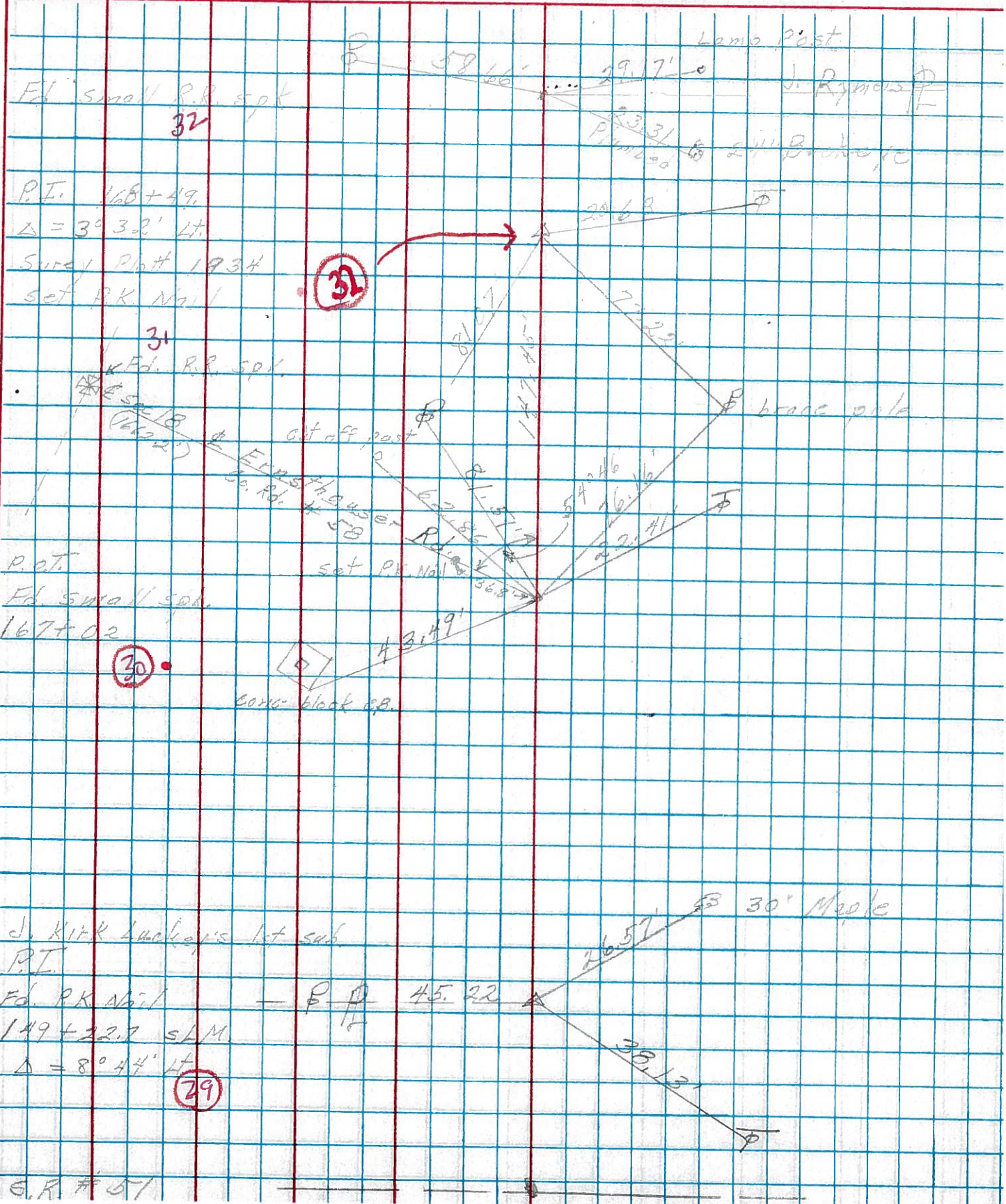
P.O.T.  
P.K. & washer atop same  
below surface



S.P. #105



PERSONNEL	TITLE	PERSONNEL	TITLE	COUNTY	Ottawa	DATE	1-24-72
Schneider				S. R.	105	WEATHER	Fair - cool
Mosser				SEC.	N.W. 1/4 Sec 8	TEMP.	30
Barbour				DESCRIPTION	Harris Twp. S.R. #51 to Oak Harbor	JOB NO.	
Geyman							





PERSONNEL	TITLE	PERSONNEL	TITLE	COUNTY	Ottawa	DATE	7-8-60
Schneider				S. R.	105	WEATHER	Fair
Mosser				SEC.	San. Co. Line to Oak Harbor	TEMP.	75°
Barbour							
Potts							

DESCRIPTION Ties for Control Points JOB NO. \_\_\_\_\_

