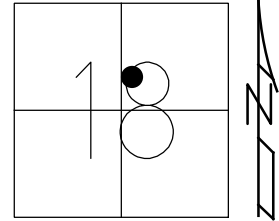


O.D.O.T. DISTRICT 2 SURVEY OFFICE (USE ONLY)

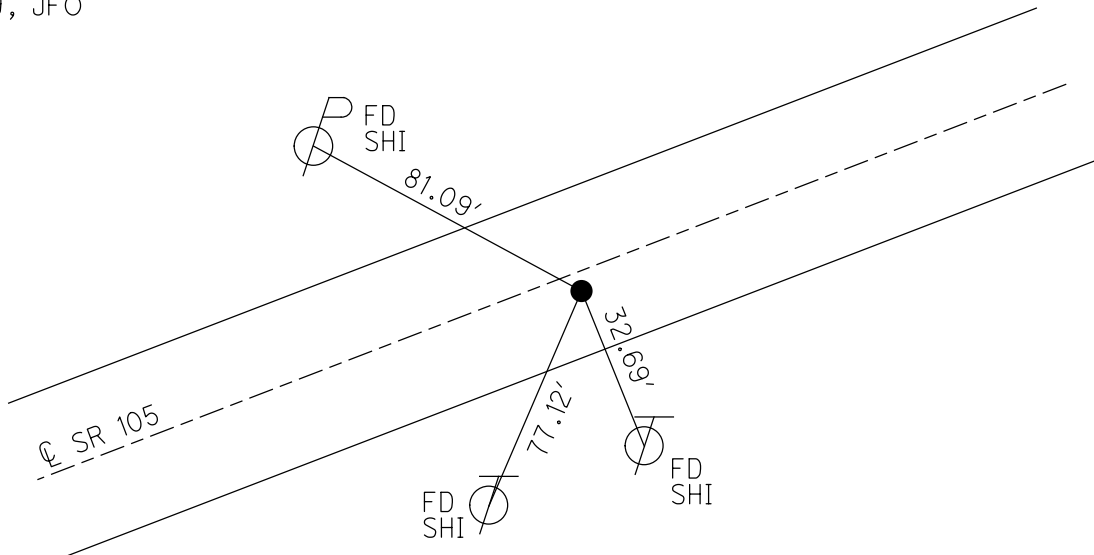
PERSONNEL	REFERENCE NO. <u>32</u>	SHEET <u>3</u> OF <u>63</u>
NOTES	RHOADES	DATE <u>7/29/19</u>
H.C.	O'DONNELL	WEATHER <u>SUNNY</u>
R.C.	MILLER	TEMP. <u>83°</u>
	AUBLE	
DWG BY	BALBAUGH	PID <u>92131</u>
		ROUTE <u>SR 105</u>
		COUNTY <u>OTTAWA</u>
		TOWNSHIP <u>HARRIS</u>
		SECTION <u>18</u>
		T <u>6</u> N R <u>14</u> E

TYPE MONUMENT P.K./WASHER
 ON SURFACE - ~~BELOW~~ ON
 OFFSET \perp PAVEMENT 2.3' \perp : RT
8.3' TO RT EDGE PAVEMENT
 STATION: 168+25.37



HORZ.DATUM: NAD83 2011 GEOID: 2012A
 GRID: NORTHING: 662622.879 EASTING: 1752411.126

RECORD: P.I.
 $\Delta = 03^{\circ} 32' 00''$ LT
 FD P.K./WASHER
 ATOP P.K.
 FD P.K./WASHER
 4/3/00, MC
 SET P.K./WASHER
 6/21/00, KPM
 FD P.K. NAIL
 REF 32
 4/5/18, JFO
 FD P.K./WASHER
 7/29/19, JFO
 SET MAG/WASHER
 11/15/19, JFO



O.D.O.T. DISTRICT 2 SURVEY OFFICE

PERSONNEL

REFERENCE NO. 32

SHEET 4 OF 96

NOTES K. MOSER

H.C. M. CANTERBURY

DATE 4-3-00

ROUTE S.R. 105

R.C. M. BARWISSEL

WEATHER Sunny

COUNTY OTTAWA

TEMP. +50°F

TOWNSHIP HARRIS

SECTION 18

T 6 N R 14 E

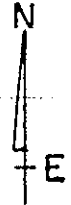
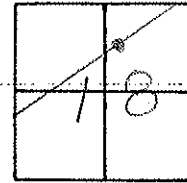
TYPE MONUMENT PK & WASHER

ON SURFACE - BELOW ON SURFACE

~~LEFT - C PAV'T.~~ - RIGHT 2.3 RT.

8.3 TO RT. EDGE PAVEMENT

S.L.M. 168+73



RECORD P.I.

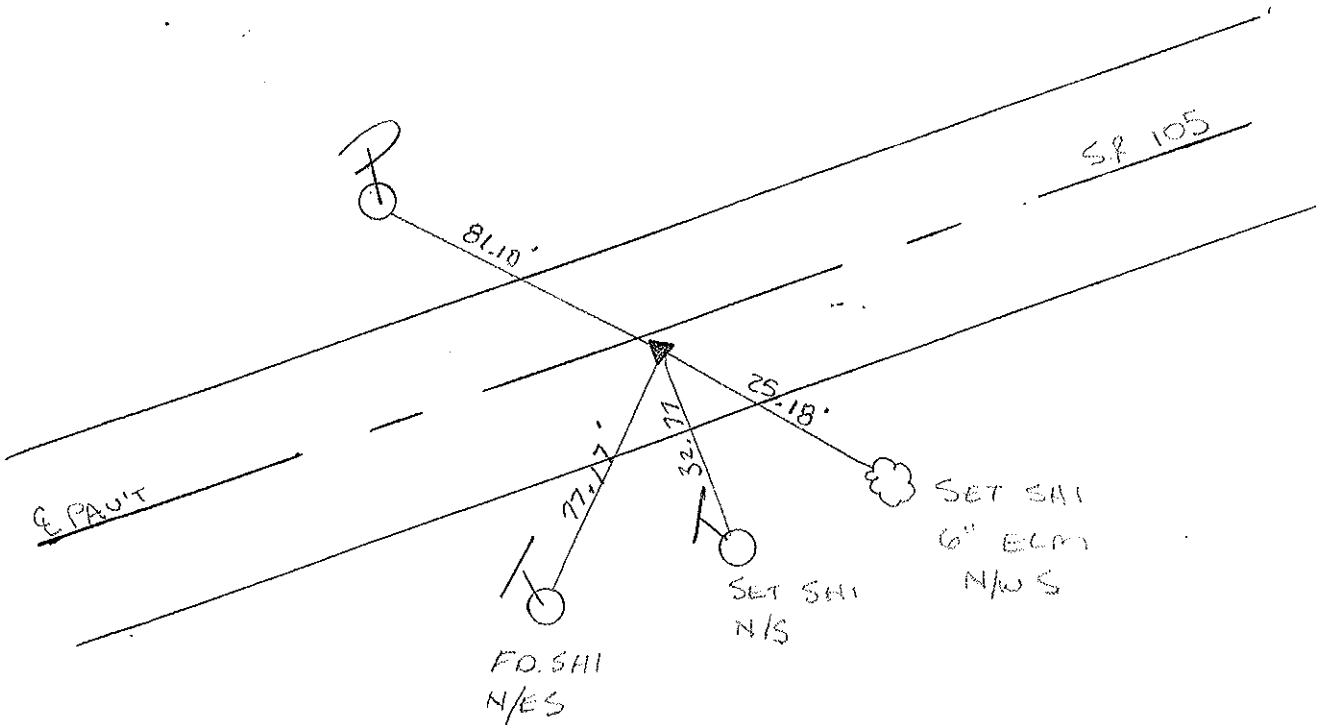
$\Delta = 03^{\circ} 32' - 00''$ LT

PK & WASHER AT OP PK.

RESET PK/WASHER

6-21-00

KPM



O.D.O.T. DISTRICT 2 SURVEY OFFICE

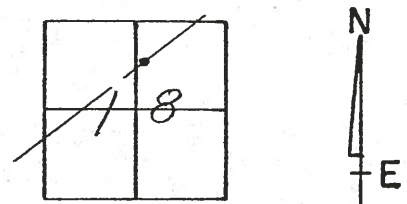
PERSONNEL

NOTES Cronin
 H.C. Ripple
 R.G. Barbour
Geyman

REFERENCE NO. 32
 DRAWN 9/23/87
 DATE 5/26/87
 WEATHER sunny
 TEMP. 67°

SHEET OF
 ROUTE 105
 COUNTY Ottawa
 TOWNSHIP Harris
 SECTION 18
T 6 N R 14 E

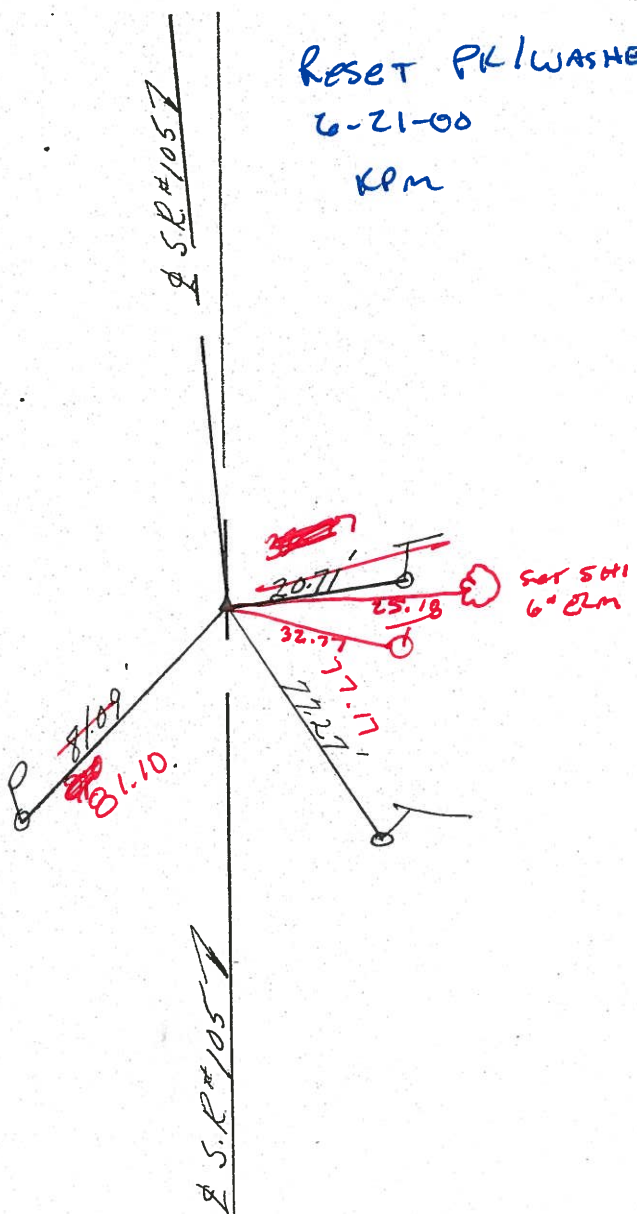
TYPE MONUMENT P.K. washer
 ON SURFACE - BELOW on surface
 LEFT - CL PAV'T. - RIGHT 3' Rt. & Pav't 2.3 Rt
3.3 TO RT EDGE PAVEMENT
 S.L.M. 168+49 168+73



MARK KC
 BILL L MC
 KEVIN DJ
 SUNNY
 +70°F

RESET PK/WASHER
 6-21-00
 KPM

P.I.
 $\Delta = 03^{\circ} 32' 00''$ Lt.
P.K. washer at top P.K.
below surface



O.D.O.T. DISTRICT 2 SURVEY OFFICE

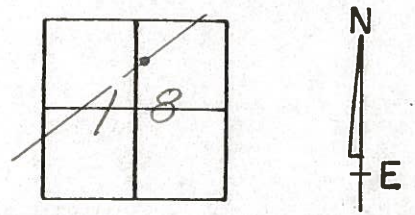
PERSONNEL

NOTES Cronin
H.C. Ripple
R.C. Barbour
Geyman

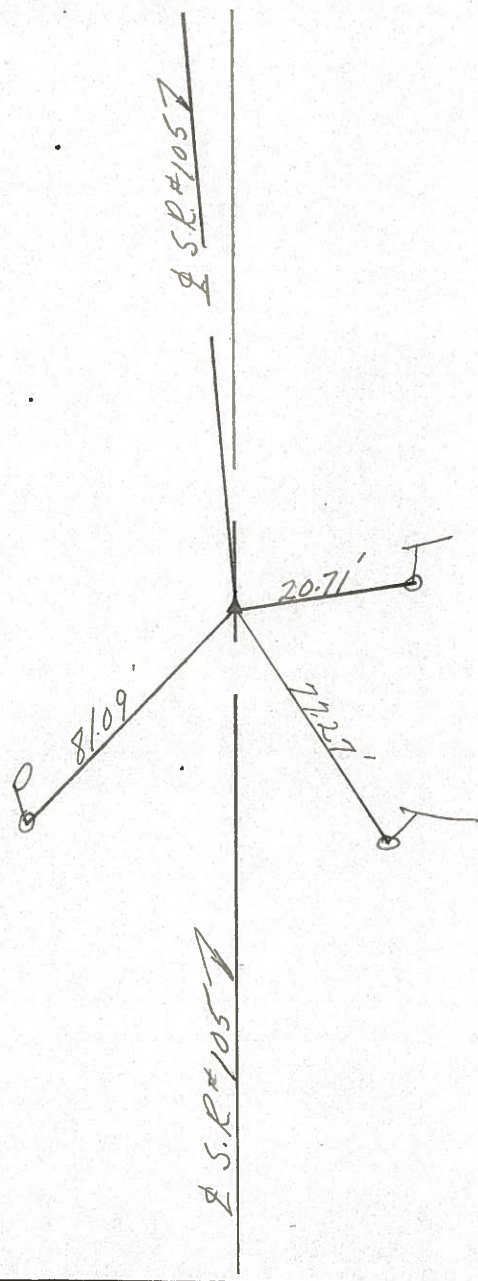
REFERENCE NO. 32
DRAWN 9/23/87
DATE 5/26/87
WEATHER sunny
TEMP. 67°

SHEET _____ OF _____
ROUTE 105
COUNTY Ottawa
TOWNSHIP Harris
SECTION 18
T 6 N R 14 E

TYPE MONUMENT P.K. washer
ON SURFACE - BELOW on surface
LEFT - ℄ PAV'T. - RIGHT 3' Rt. & Pav't
TO _____ EDGE PAVEMENT
S.L.M. 168+49



P.I.
Δ = 03° 32' 00" Lt.
P.K. washer at top P.K.
below surface



PERSONNEL TITLE PERSONNEL TITLE

Schneider _____

Mosser _____

Barbour _____

German _____

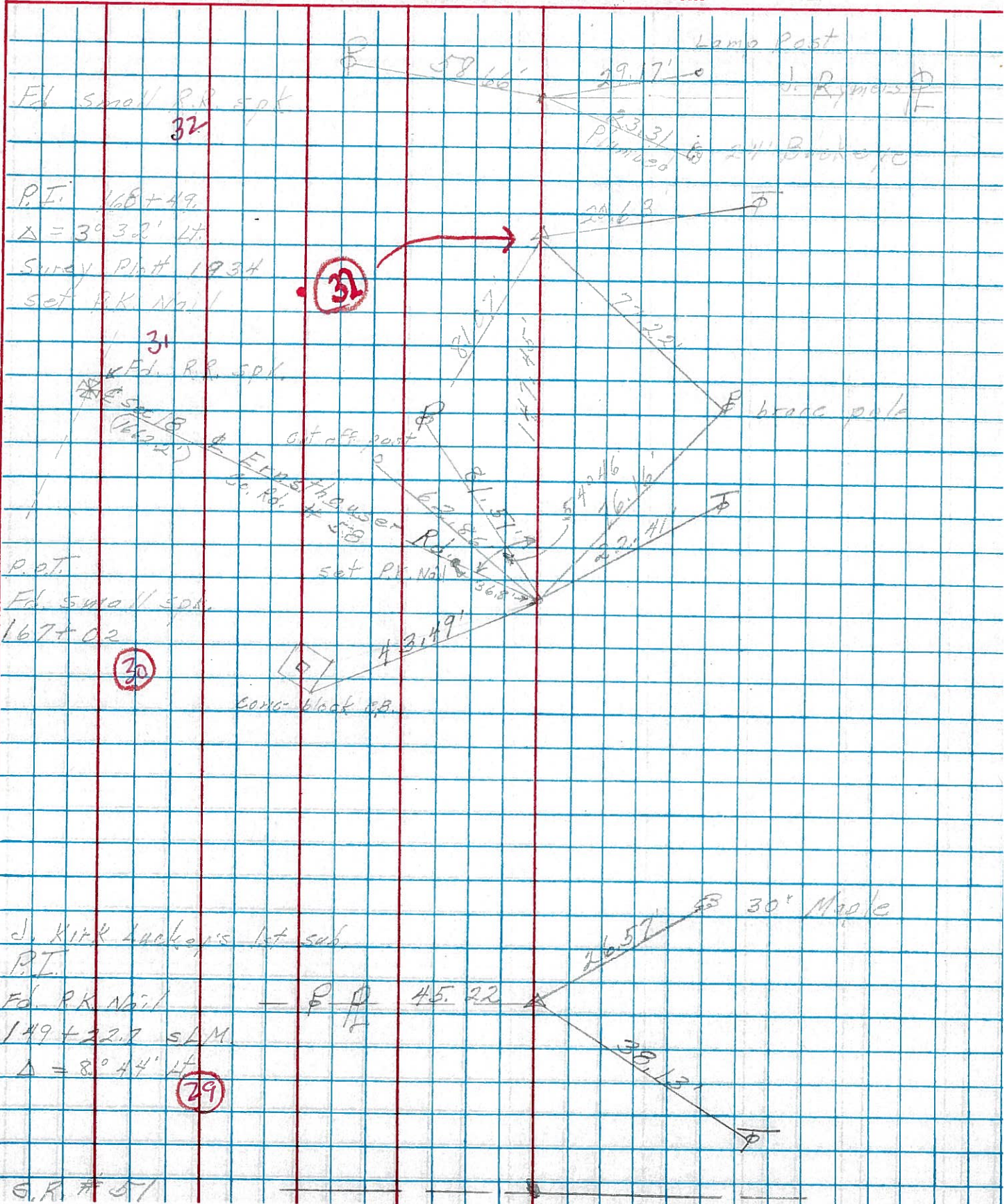
COUNTY Ottawa DATE 1-24-72

S. R. 105 WEATHER Fair - cool

SEC. N.W. 1/4 Sec 8 TEMP. 30

DESCRIPTION Harris Twp. S.R. #51 to Oak Harbor JOB NO. _____

LEFT CENTER LINE RIGHT



S.R. #51