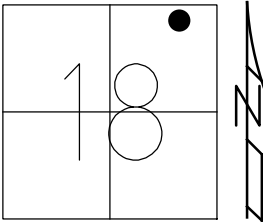


O.D.O.T. DISTRICT 2 SURVEY OFFICE (USE ONLY)

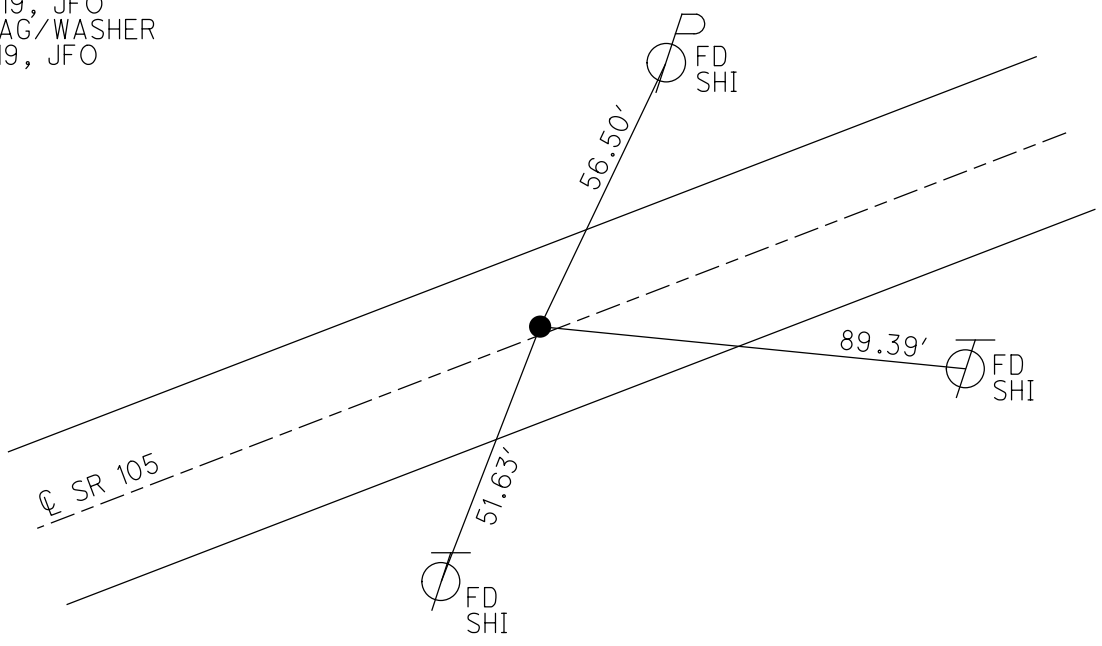
PERSONNEL _____ REFERENCE NO. 33 SHEET 5 OF 63
 NOTES RHOADES DATE 7/29/19 ROUTE SR 105
 H.C. O'DONNELL WEATHER SUNNY COUNTY OTTAWA
 R.C. MILLER TEMP. 83° TOWNSHIP HARRIS
AUBLE
 DWG BY BALBAUGH PID 92131 SECTION 18
 T 6 N R 14 E

TYPE MONUMENT MAG NAIL
 ON SURFACE - ~~BELOW~~ ON _____
 OFFSET Q PAVEMENT 1.7' LT : ~~RT~~
8.3' TO LT EDGE PAVEMENT
 STATION: 186+79.14



HORZ.DATUM: NAD83 2011 GEOID: 2012A
 GRID: NORTHING: 663783.241 EASTING: 1753856.820

RECORD: P.O.T.
 FD BOAT SPIKE
 ATOP SPIKE
 FD P.K./WASHER
 4/3/00, MC
 SET P.K./WASHER
 6/21/00, KPM
 FD P.K. SHANK
 SET MAG/WASHER
 REF33
 4/5/18, JFO
 FD MAG NAIL
 7/29/19, JFO
 SET MAG/WASHER
 11/15/19, JFO



O.D.O.T. DISTRICT 2 SURVEY OFFICE

PERSONNEL

REFERENCE NO. 33

SHEET 6 OF 96

NOTES K. MOSER

H.C. M. CANTERBURY

DATE 4-3-00

ROUTE S.R. 105

R.C. M. BARNHISEL

WEATHER Sunny

COUNTY OTTAWA

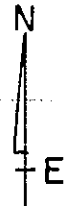
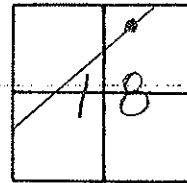
TEMP. +50°F

TOWNSHIP HARRIS

SECTION 18

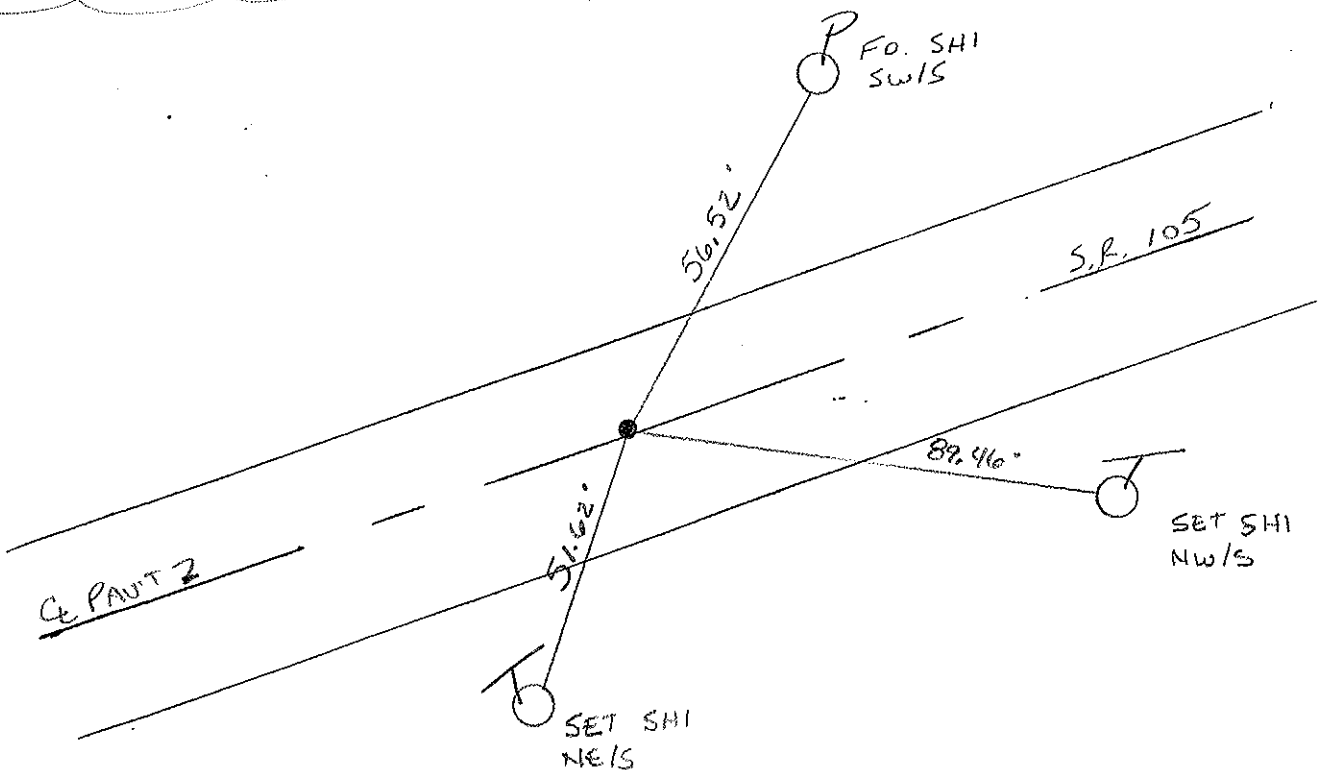
T 6 N R 14 E

TYPE MONUMENT PK/WASHER
 ON SURFACE - ~~BELOW~~ ON SURFACE
 LEFT - ~~C~~ PAV'T. - RIGHT 1.7' LT &
8.3 TO LT. EDGE PAVEMENT
 S.L.M. 187+30



RECORD: POT
 BOAT SPIKE, ATOP SPIKE
 (ll?) BELOW SURFACE

RESET PK/WASHER
 6-21-00
 KPM



O.D.O.T. DISTRICT 2 SURVEY OFFICE

PERSONNEL

REFERENCE NO. 33

SHEET OF

NOTES Cronin

DRAWN 9/23/87

H.C. Ripple

DATE 5/26/87

R.C. Barbour

WEATHER sunny

Geyman

TEMP. 70°

ROUTE 105

COUNTY Ottawa

TOWNSHIP Harris

SECTION 18

T. 6 N. 14 E.

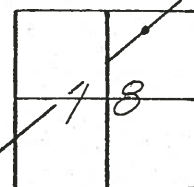
TYPE MONUMENT P.R. & washer

ON SURFACE - BELOW on surface

LEFT - 0 PAV'T. - RIGHT 18 Lt. & Pavt.

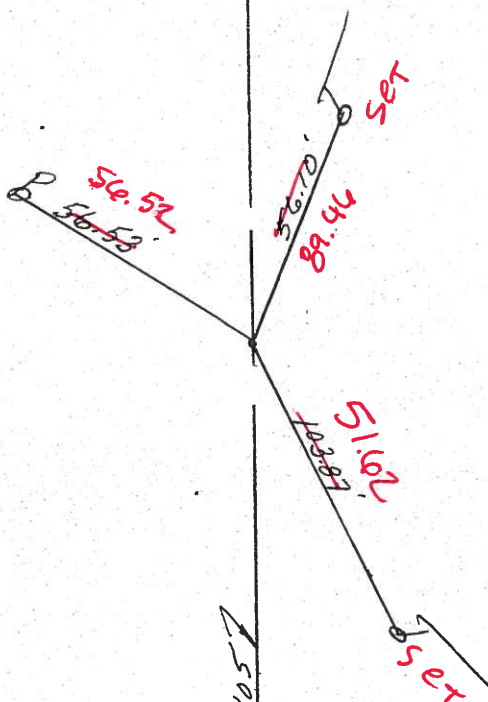
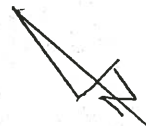
0.3 TO LT EDGE PAVEMENT

S.L.M. 187+03 187+30



MARK HC
 BILL HC
 Kevin
 sunny
 +50°F

Reset PK/WASHER
 6-21-00
 KPM



P.O.T.
 boat spike atop spike
 (P.R.?) below surface

S.R. #1057

O.D.O.T. DISTRICT 2 SURVEY OFFICE

PERSONNEL

REFERENCE NO. 33

SHEET OF

NOTES Cronin

DRAWN 9/23/87

H.C. Ripple

DATE 5/26/87

R.C. Barbour

WEATHER sunny

Geyman

TEMP. 70°

ROUTE 105

COUNTY Ottawa

TOWNSHIP Harris

SECTION 18

T. 6 N R. 14 E

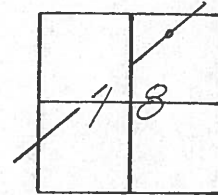
TYPE MONUMENT P.R. & washer

ON SURFACE - BELOW on surface

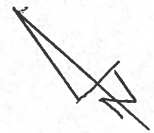
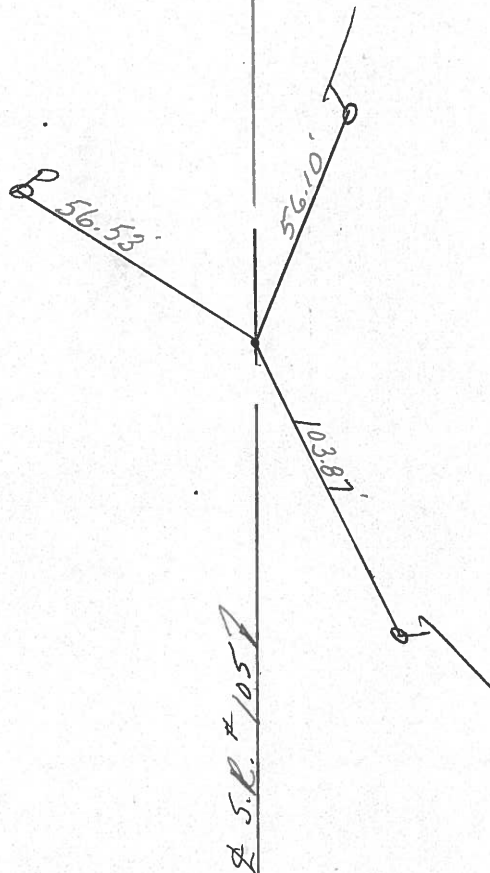
LEFT - ☉ PAV'T. - RIGHT 1.8' Lt. & Pav't.

TO EDGE PAVEMENT

S.L.M. 187+03



P.O.T.
boat spike atop spike
(P.R.?) below surface



PERSONNEL TITLE PERSONNEL TITLE

COUNTY Ottawa

DATE 2-20-74

S. R. 105

WEATHER Fair

SEC. Sec 8

TEMP. 35°

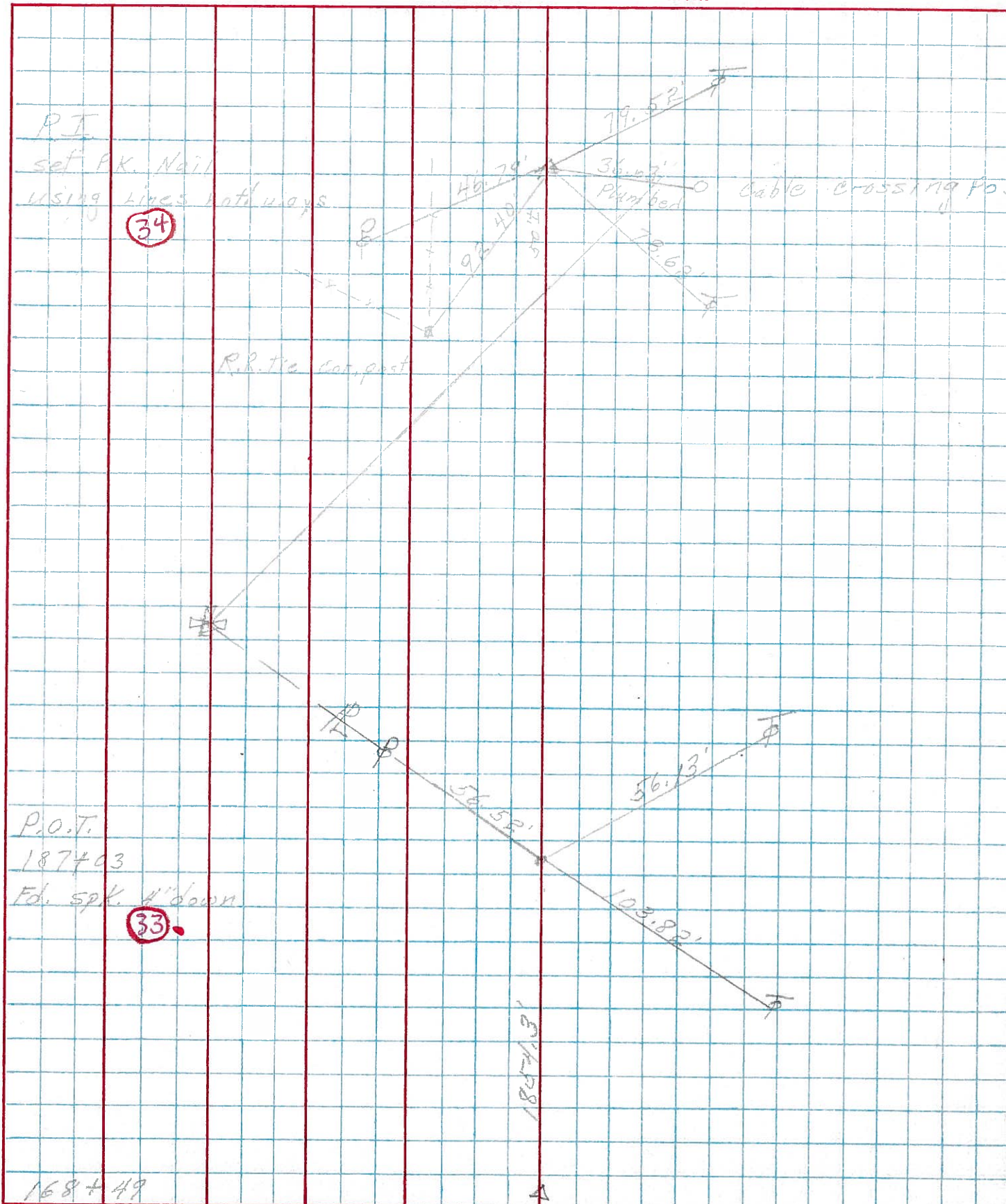
DESCRIPTION Harris TWP.

LEFT

CENTER LINE

RIGHT

JOB NO.



168+49