

O.D.O.T. DISTRICT 2 SURVEY OFFICE (USE ONLY)

PERSONNEL

REFERENCE NO. 35

SHEET 7 OF 63

NOTES RHOADES
 H.C. O'DONNELL
 R.C. MILLER
AUBLE

DATE 7/29/19
 WEATHER SUNNY
 TEMP. 83°

ROUTE SR 105
 COUNTY OTTAWA
 TOWNSHIP HARRIS
 SECTION 7
 T 6 N R 14 E

DWG BY BALBAUGH PID 92131

TYPE MONUMENT P.K./WASHER

ON SURFACE - ~~BELOW~~ ON

OFFSET ϕ PAVEMENT 0.8' LT : ~~RT~~

11.0' TO RT EDGE PAVEMENT

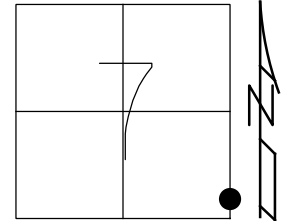
STATION: 200+76.68

HORZ.DATUM: NAD83 2011

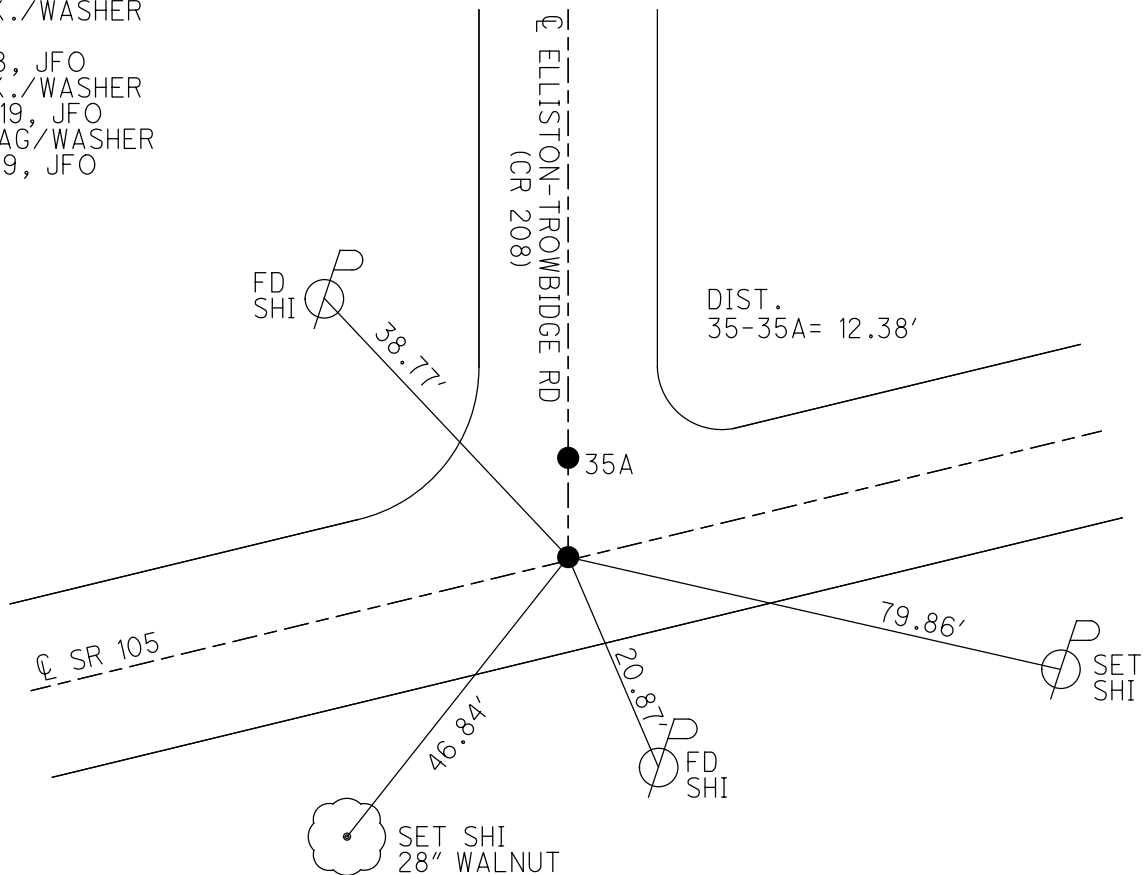
GEOID: 2012A

GRID: NORTHING: 664673.881

EASTING: 1754933.575



RECORD:
 FD P.K./WASHER ATOP
 I.P.I.PE BELOW SURFACE
 5/26/87
 FD P.K./WASHER
 4/3/00, MC
 SET P.K./WASHER
 6/21/00, KPM
 FD P.K./WASHER
 REF 35
 4/5/18, JFO
 FD P.K./WASHER
 7/29/19, JFO
 SET MAG/WASHER
 11/15/19, JFO



O.D.O.T. DISTRICT 2 SURVEY OFFICE

PERSONNEL

REFERENCE NO. 35

SHEET 8 OF 96

NOTES K. Moser

H.C. M. CANTERBURY

DATE 4-3-00

ROUTE S.R. 105

R.C. M. BARNHISEL

WEATHER SUNNY

COUNTY OTTAWA

TEMP. +50°F

TOWNSHIP HARRIS

SECTION 7

T6 N R 14 E

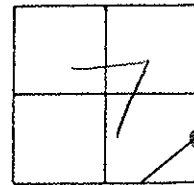
TYPE MONUMENT PK / WASHER

ON SURFACE - ~~BELOW~~ ON SURFACE

LEFT - ~~C PAV'T.~~ RIGHT 0.8' LT

11.0 TO RT. EDGE PAVEMENT

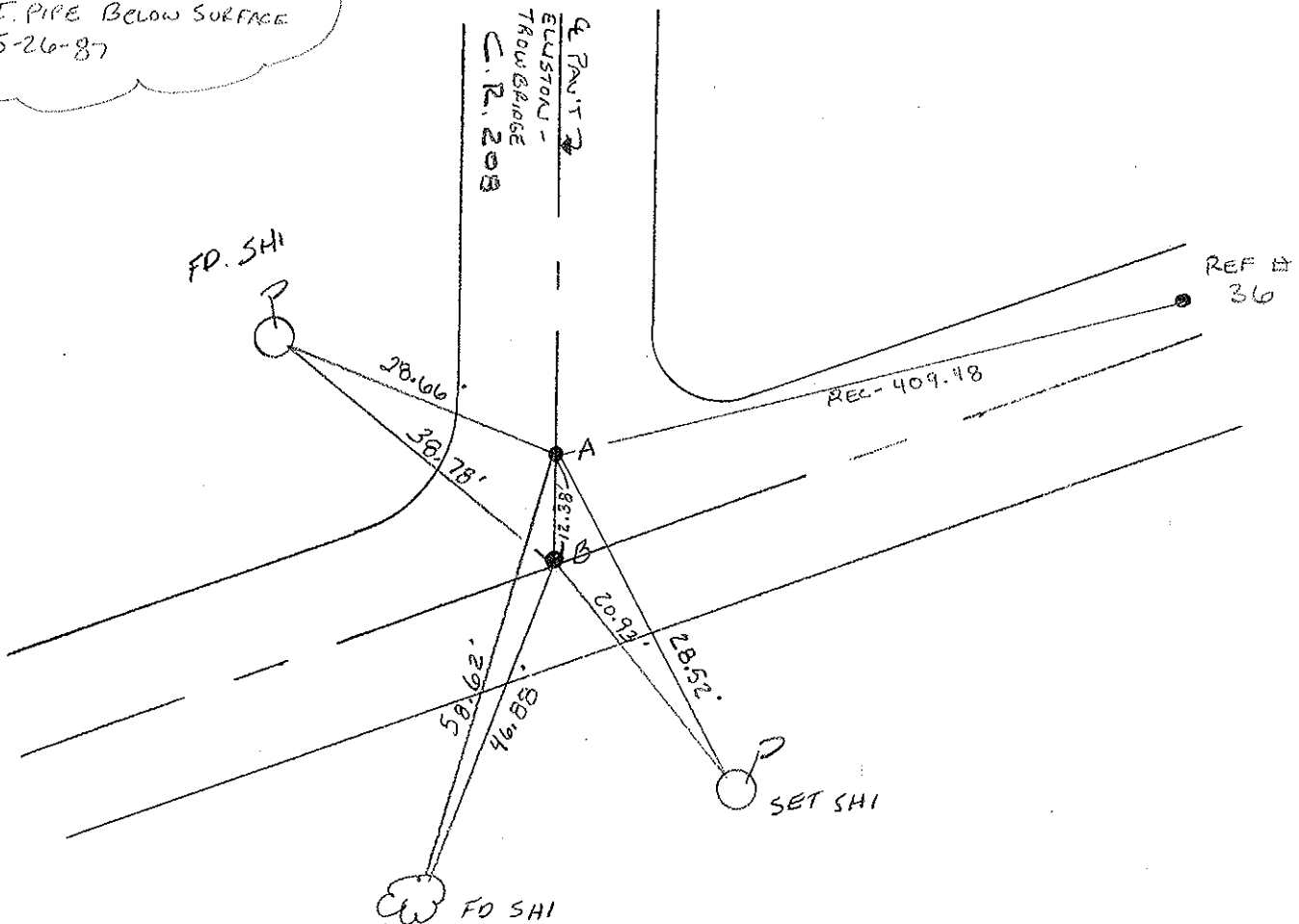
S.L.M. 201 + 31



A) RECORD PK ATOP PK
FROM OLD SURVEY PLAT
8/06/87

B) PK & WASHER ATOP
I. PIPE BELOW SURFACE
5-26-87

RESET PK'S / WASHERS
6-21-00
1KPM



O.D.O.T. DISTRICT 2 SURVEY OFFICE

PERSONNEL

REFERENCE NO. 35

SHEET OF

NOTES Cronin

H.C. Ripple

R.C. Barbour

Geyman

DATE DRAWN 9/23/87

WEATHER

TEMP.

ROUTE 105

COUNTY Ottawa

TOWNSHIP Harris

SECTION 7

T 6 N R 14 E

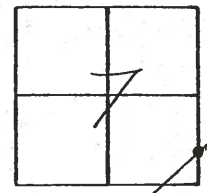
TYPE MONUMENT P.K. & washers

ON SURFACE - BELOW on surface

LEFT - ☉ PAV'T. - RIGHT 0.0 LT

11.0 TO RT EDGE PAVEMENT

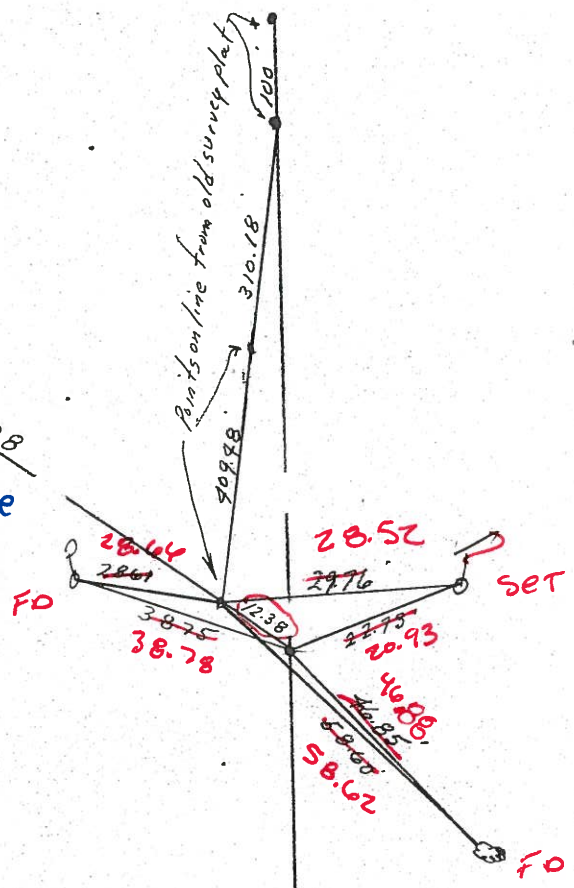
S.L.M. 20+100.00 20+31



MARK HC
 BILL RC
 KEVIN DJ
 SUNNY
 70°P

ELLISTON TROWBRIDGE
 C.L. # 108

P.K. a top same below
 surface from old survey
 plat. 8/06/87 - sunny 70°



P.K. & washer a top of
 pipe below surface
 5/26/87 - sunny 70°

O.D.O.T. DISTRICT 2 SURVEY OFFICE

PERSONNEL

REFERENCE NO. 35

SHEET OF

NOTES Cronin

H.C. Ripple

R.C. Barbour

Geyman

DATE Drawn 9/23/87

WEATHER

TEMP.

ROUTE 105

COUNTY Ottawa

TOWNSHIP Harris

SECTION 7

T. 6 N R. 14 E

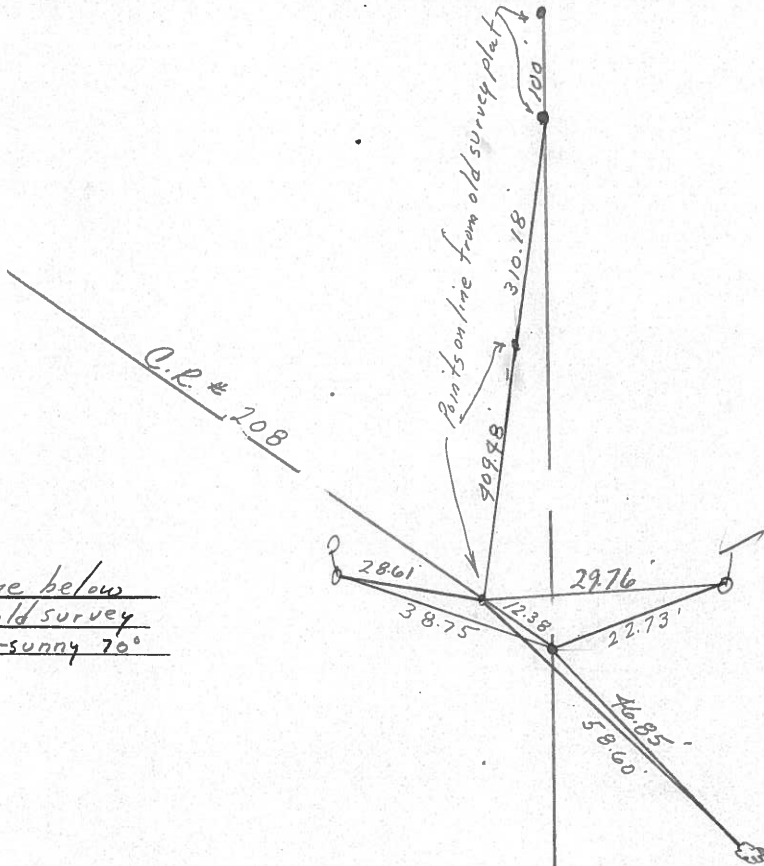
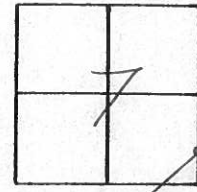
TYPE MONUMENT P.K.s & washers

ON SURFACE - BELOW on surface

LEFT - PAV'T. - RIGHT

 TO EDGE PAVEMENT

S.L.M. 201+00.80



P.K. at top same below surface from old survey plat. 8/06/87 - sunny 70°

P.K. & washer at top of pipe below surface 5/26/87 - sunny 70°

