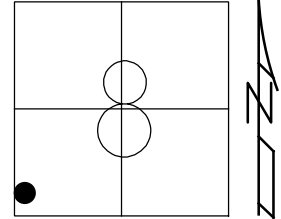


O.D.O.T. DISTRICT 2 SURVEY OFFICE (USE ONLY)

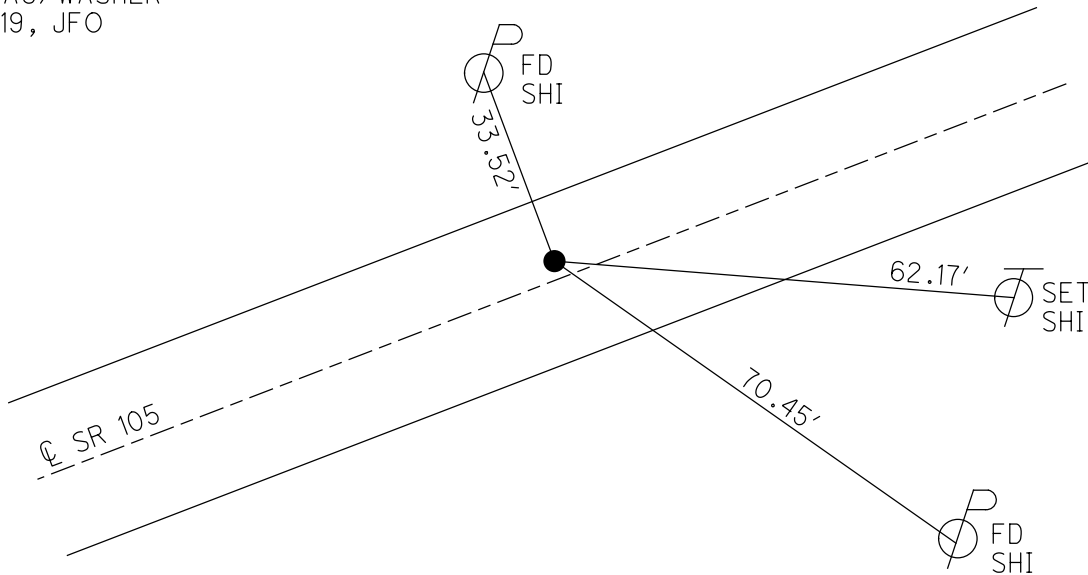
PERSONNEL _____ REFERENCE NO. 36 SHEET 9 OF 63
 NOTES RHOADES DATE 7/29/19 ROUTE SR 105
 H.C. O'DONNELL WEATHER SUNNY COUNTY OTTAWA
 R.C. MILLER TEMP. 83° TOWNSHIP HARRIS
AUBLE SECTION 8
 DWG BY BALBAUGH PID 92131 T 6 N R 14 E

TYPE MONUMENT P.K./WASHER
 ON SURFACE - ~~BELOW~~ ON _____
 OFFSET \odot PAVEMENT 4.4' LT : ~~RT~~
6.3 TO LT EDGE PAVEMENT
 STATION: 204+94.10

HORIZ.DATUM: NAD83 2011 GEOID: 2012A
 GRID: NORTHING: 664947.996 EASTING: 1755248.369



RECORD: P.O.T.
 FD R.R.SPIKE
 1974, 3" DOWN
 FD P.K./WASHER
 4/3/00, MC
 SET P.K./WASHER
 6/21/00, KPM
 FD P.K./WASHER
 REF36
 4/5/18, JFO
 FD P.K./WASHER
 7/29/19, JFO
 SET MAG/WASHER
 11/18/19, JFO



O.D.O.T. DISTRICT 2 SURVEY OFFICE

PERSONNEL

REFERENCE NO. 36

SHEET 9 OF 96

NOTES K. Moser

H.C. M. CANTERBURY

R.C. M. BARNHISEL

DATE 4-3-00

WEATHER Sunny

TEMP. +50°F

ROUTE S.R. 105

COUNTY OTTAWA

TOWNSHIP HARRIS

SECTION 8

T6 N R 14 E

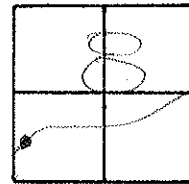
TYPE MONUMENT PK/WASHER

ON SURFACE - ~~BELOW~~ ON SURFACE

LEFT - ~~C~~ PAV'T. - RIGHT 4.4' LT.

6.3 TO LT. EDGE PAVEMENT

S.L.M. 205+49



RECORD: POT
FO RR SPIKE ~ 1974
3" Down

RESET PK/WASHER
6-21-00
KPM

