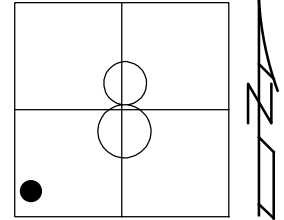


O.D.O.T. DISTRICT 2 SURVEY OFFICE (USE ONLY)

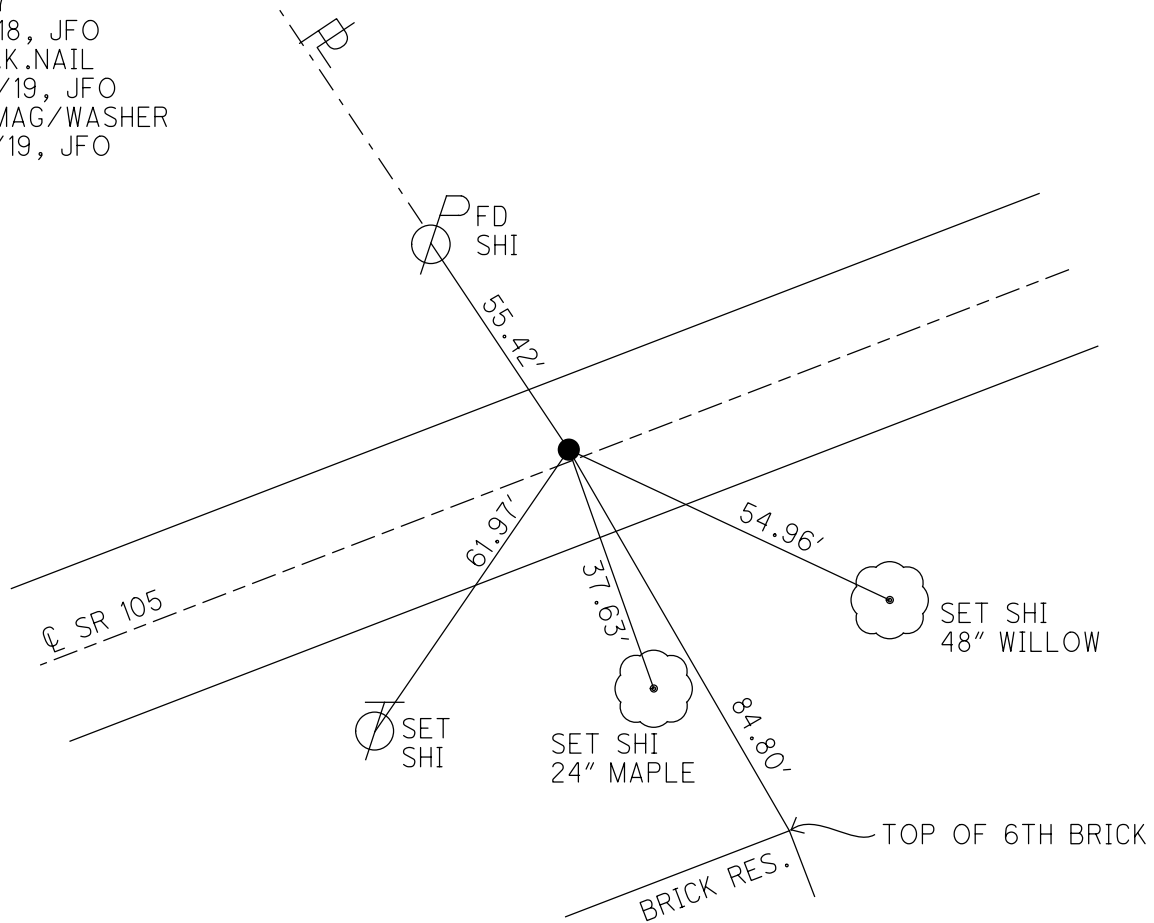
PERSONNEL	REFERENCE NO. <u>37</u>	SHEET <u>10</u> OF <u>63</u>
NOTES <u>RHOADES</u>	DATE <u>7/29/19</u>	ROUTE <u>SR 105</u>
H.C. <u>O'DONNELL</u>	WEATHER <u>SUNNY</u>	COUNTY <u>OTTAWA</u>
R.C. <u>MILLER</u>	TEMP. <u>83°</u>	TOWNSHIP <u>HARRIS</u>
<u>AUBLE</u>		SECTION <u>8</u>
DWG BY <u>BALBAUGH</u>	PID <u>92131</u>	T <u>6</u> N R <u>14</u> E

TYPE MONUMENT P.K.NAIL
 ON SURFACE - ~~BELOW~~ ON
 OFFSET Q PAVEMENT 2.0' LT : RT
8.4' TO LT EDGE PAVEMENT
 STATION: 207+81.68

HORIZ.DATUM: NAD83 2011 GEOID: 2012A
 GRID: NORTHING: 665132.052 EASTING: 1755469.342



RECORD:
 FD P.K./WASHER
 4/3/00, MC
 SET P.K./WASHER
 6/21/00, KPM
 FD P.K.NAIL
 REF37
 4/5/18, JFO
 FD P.K.NAIL
 7/29/19, JFO
 SET MAG/WASHER
 11/18/19, JFO



O.D.O.T. DISTRICT 2 SURVEY OFFICE

PERSONNEL

REFERENCE NO. 37

SHEET 10 OF 96

NOTES K. MOSER

H.C. M. CANTERBURY

DATE 4-3-00

ROUTE S.R. 105

R.C. M. BARNHISEL

WEATHER Sunny

COUNTY OTTAWA

TEMP. +50°F

TOWNSHIP HARRIS

SECTION 8

T6N R14E

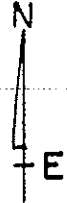
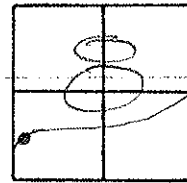
TYPE MONUMENT PK/WASHER

ON SURFACE - BELOW ON SURFACE

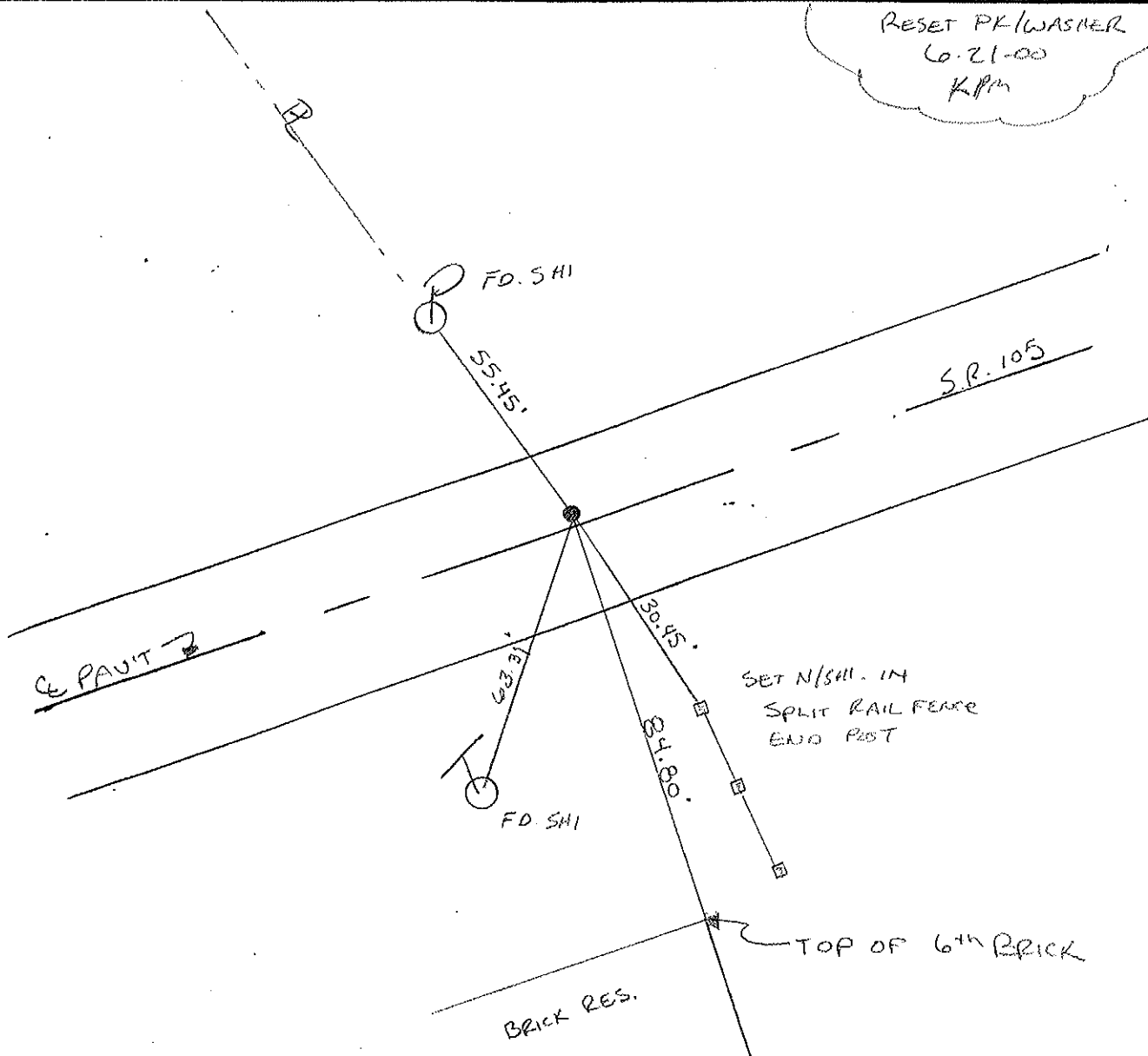
LEFT - C PAV'T. - RIGHT 2.0 LT.

0.4 TO LT. EDGE PAVEMENT

S.L.M. 208+38



RESET PK/WASHER
6.21-00
KPM



O.D.O.T. DISTRICT 2 SURVEY OFFICE

PERSONNEL

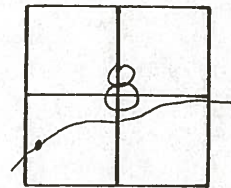
NOTES Cronin
H.C. Ripple
R.C. Barbour
Geyman

REFERENCE NO. 37
DRAWN 9/25/87
DATE 5/26/87
WEATHER sunny
TEMP. 70°

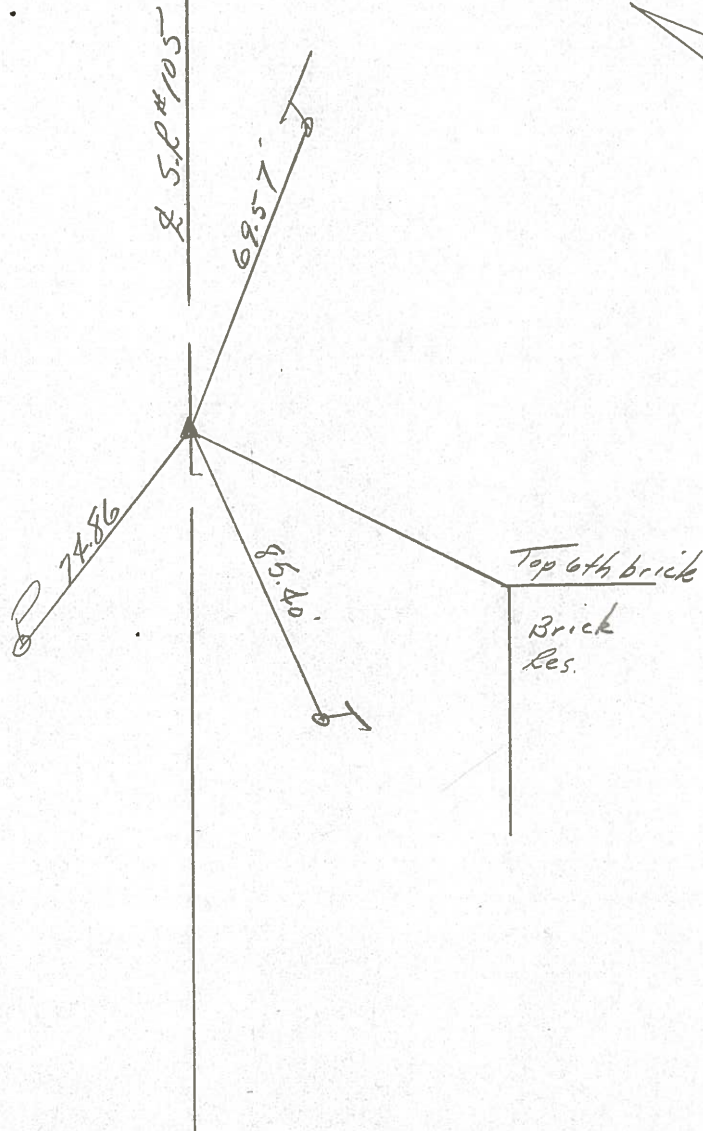
SHEET OF
ROUTE 105
COUNTY Ottawa
TOWNSHIP Harris
SECTION 8
T 6 N R 14 E

TYPE MONUMENT mine spike
ON SURFACE - BELOW below surface
LEFT - ¢ PAV'T. - RIGHT 2' Lt. & Pavt.
TO EDGE PAVEMENT
S.L.M. 208+28.50

38



P.I.
Dig when needed



PERSONNEL TITLE PERSONNEL TITLE

COUNTY Ottawa DATE 1-24-7

S. R. 105 WEATHER Fair

SEC. SW. 1/4 sec 8 TEMP. 40°

DESCRIPTION Harris Twp. JOB NO.

