

O.D.O.T. DISTRICT 2 SURVEY OFFICE (USE ONLY)

PERSONNEL

REFERENCE NO. 39

SHEET 11 OF 63

NOTES RHOADES

DATE 7/29/19

ROUTE SR 105

H.C. O'DONNELL

WEATHER SUNNY

COUNTY OTTAWA

R.C. MILLER

TEMP. 83°

TOWNSHIP HARRIS

SECTION 8

DWG BY BALBAUGH PID 92131

T 6 N R 14 E

TYPE MONUMENT P.K./WASHER

ON SURFACE - ~~BELOW~~ ON

OFFSET Q PAVEMENT 1.5' LT : RT

9.2' TO LT EDGE PAVEMENT

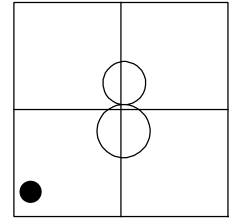
STATION: 209+04.85

HORZ.DATUM: NAD83 2011

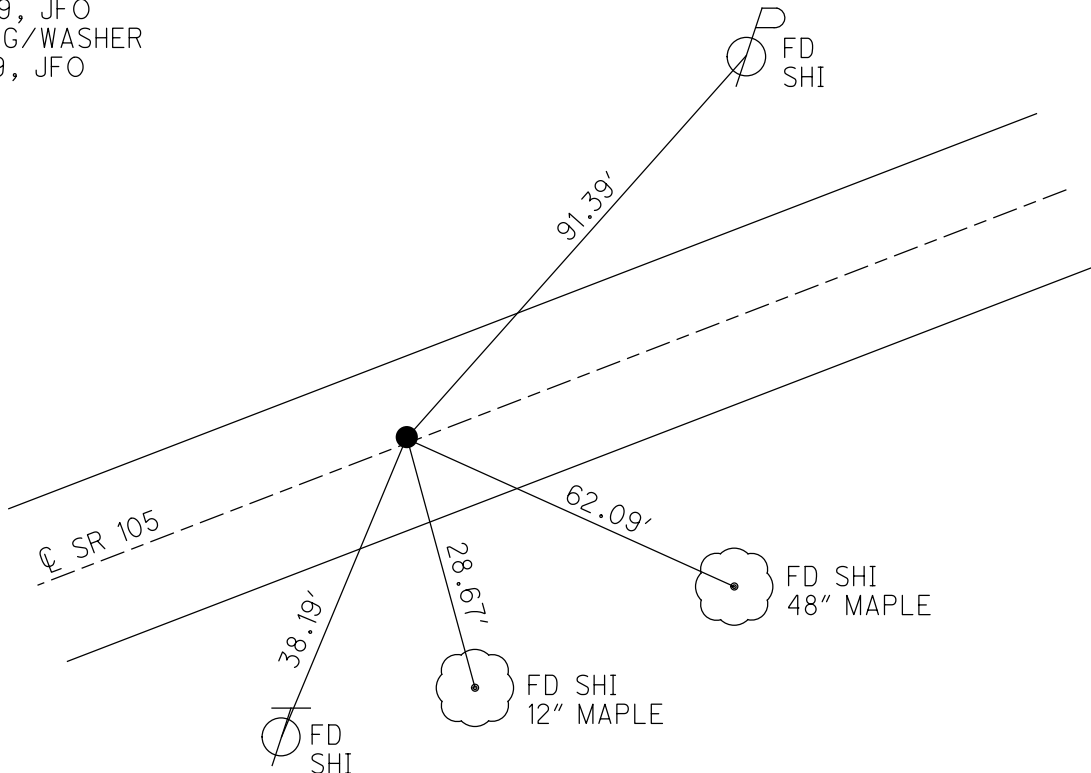
GEOID: 2012A

GRID: NORTHING: 665210.946

EASTING: 1755563.918



RECORD:
 FD P.K./WASHER
 4/3/00, MC
 SET P.K./WASHER
 6/21/00, KPM
 FD P.K.SHANK
 REF39
 4/18/18, JFO
 FD P.K./WASHER
 7/29/19, JFO
 SET MAG/WASHER
 11/18/19, JFO



O.D.O.T. DISTRICT 2 SURVEY OFFICE

PERSONNEL

REFERENCE NO. 39, 40, 41

SHEET 11 OF 96

NOTES K. MOSER

H.C. M. CANTERBURY

DATE 4-3-00

ROUTE S.R. 105

R.C. M. BARNHISEL

WEATHER Sunny

COUNTY OTTAWA

TEMP. +50°F

TOWNSHIP HARRIS

SECTION 8

T6 N R 14 E

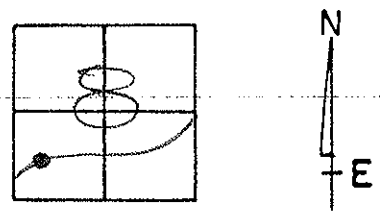
TYPE MONUMENT PK / WASHER

ON SURFACE - ~~BELOW~~ ON SURFACE

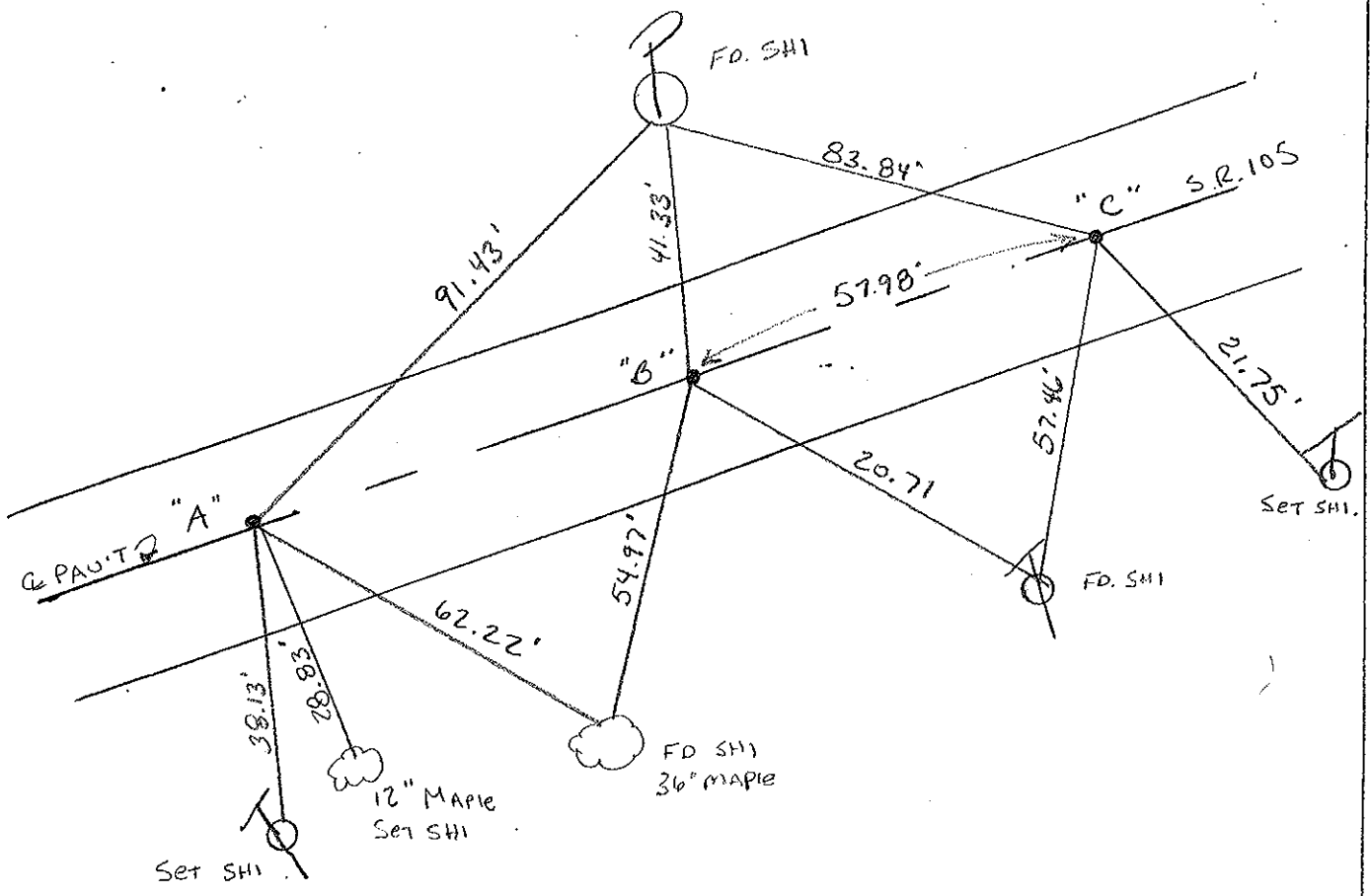
LEFT - ~~C PAV'T~~ RIGHT A-1.5' LT' B-0.6' LT' C-0.3' LT'

TO LT. EDGE PAVEMENT A-9.2' B-9.7' C-10.0'

S.L.M. A-209+62 B-210+62 C-211+20



RESET PK / WASHERS
6-21-00
KPM



PERSONNEL TITLE PERSONNEL TITLE

COUNTY Ottawa DATE 1-24-7

S. R. 105 WEATHER Fair

SEC. SW 1/4 sec 8 TEMP. 40°

DESCRIPTION Harris Twp.

JOB NO.

