

O.D.O.T. DISTRICT 2 SURVEY OFFICE (USE ONLY)

PERSONNEL

REFERENCE NO. 41

SHEET 13 OF 63

NOTES RHOADES

DATE 7/29/19

ROUTE SR 105

H.C. O'DONNELL

WEATHER SUNNY

COUNTY OTTAWA

R.C. MILLER

TEMP. 83°

TOWNSHIP HARRIS

SECTION 8

DWG BY BALBAUGH PID 92131

T 6 N R 14 E

TYPE MONUMENT P.K./WASHER

ON SURFACE - ~~BELOW~~ ON

OFFSET 0.3' \varnothing PAVEMENT LT : ~~RT~~

10.0' TO LT EDGE PAVEMENT

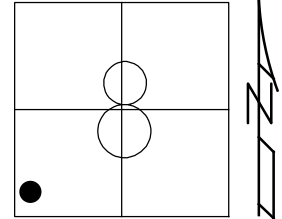
STATION: 210+62.98

HORZ.DATUM: NAD83 2011

GEOID: 2012A

GRID: NORTHING: 665311.990

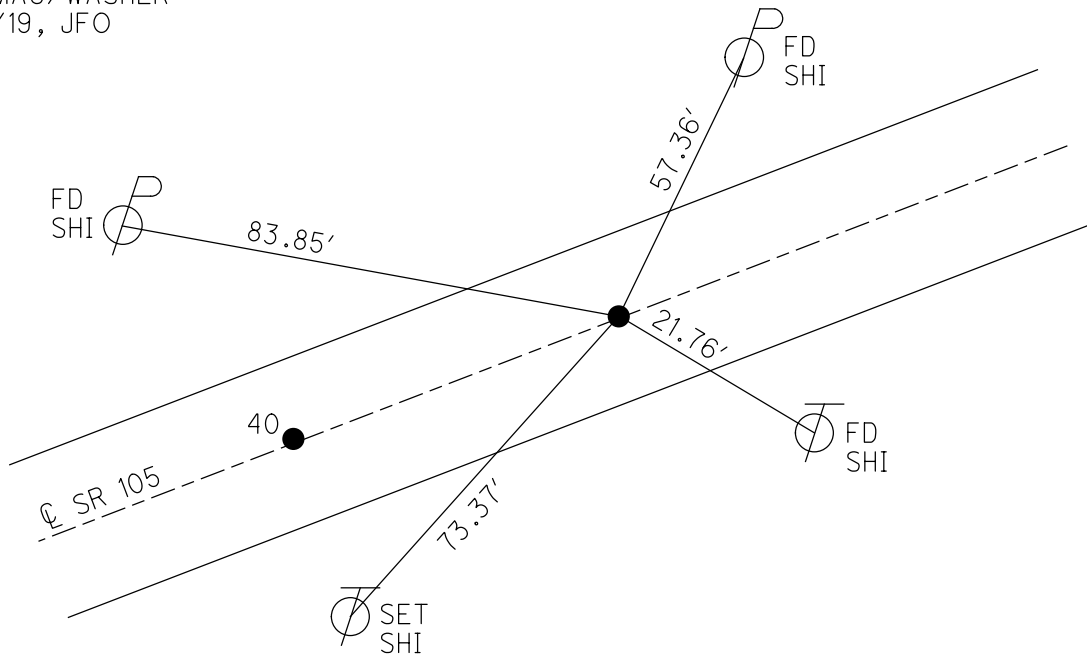
EASTING: 1755685.553



RECORD:

FD P.K./WASHER
4/3/00, MC
SET P.K./WASHER
6/21/00, KPM
FD P.K.NAIL
REF41
4/18/18, JFO
FD P.K./WASHER
7/29/19, JFO
SET MAG/WASHER
11/18/19, JFO

DIST.
40-41= 57.97'



O.D.O.T. DISTRICT 2 SURVEY OFFICE

PERSONNEL

REFERENCE NO. 39, 40, 41

SHEET 11 OF 96

NOTES K. MOSER

H.C. M. CANTERBURY

DATE 4-3-00

ROUTE S.R. 105

R.C. M. BARNHISEL

WEATHER Sunny

COUNTY OTTAWA

TEMP. +50°F

TOWNSHIP HARRIS

SECTION 8

T6N R14E

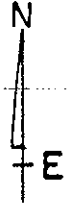
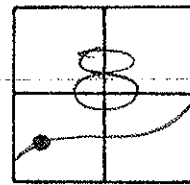
TYPE MONUMENT PK / WASHER

ON SURFACE - ~~BELOW~~ ON SURFACE

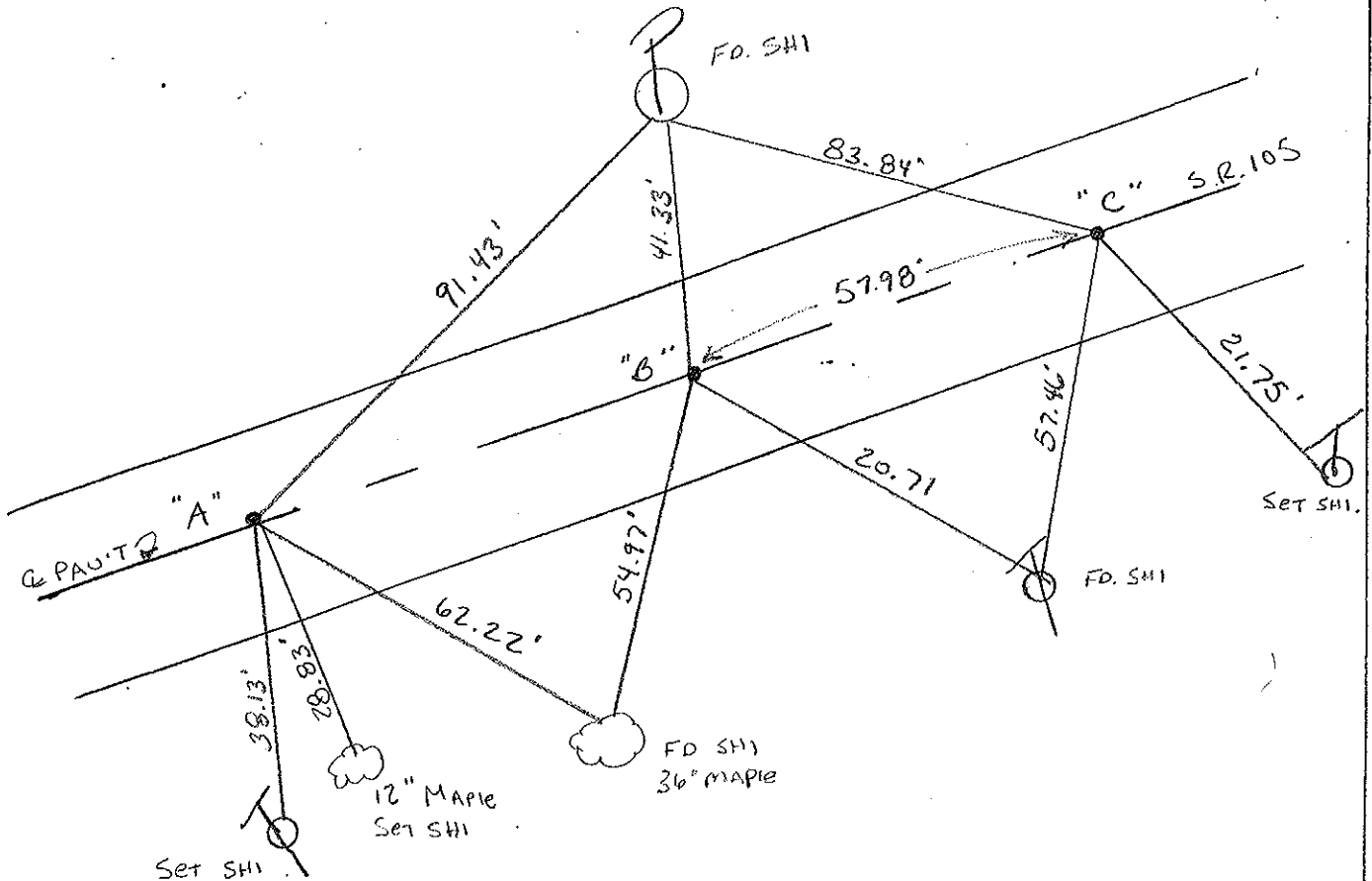
LEFT - ~~C~~ PAV'T RIGHT A-1.5' LT' B-0.6' LT' C-0.3' LT'

TO LT. EDGE PAVEMENT A-9.2' B-9.7' C-10.0'

S.L.M. A-209+62 B-210+62 C-211+20



RESET PK/WASHERS
 @ -21-00
 KPM



PERSONNEL TITLE PERSONNEL TITLE

COUNTY Ottawa DATE 1-24-7

S. R. 105 WEATHER Fair

SEC. SW 1/4 sec 8 TEMP. 40°

DESCRIPTION Harris Twp.

JOB NO.

LEFT CENTER LINE RIGHT

