

O.D.O.T. DISTRICT 2 SURVEY OFFICE (USE ONLY)

PERSONNEL

REFERENCE NO. 43

SHEET 15 OF 63

NOTES RHOADES  
 H.C. O'DONNELL  
 R.C. MILLER  
AUBLE

DATE 7/29/19  
 WEATHER SUNNY  
 TEMP. 83°

ROUTE SR 105  
 COUNTY OTTAWA  
 TOWNSHIP HARRIS  
 SECTION 8

DWG BY BALBAUGH PID 92131

T 6 N R 14 E

TYPE MONUMENT P.K.NAIL

ON SURFACE - ~~BELOW~~ ON

OFFSET  $\odot$  PAVEMENT 0.5' ~~ET~~ : RT

9.4' TO RT EDGE PAVEMENT

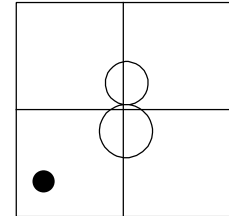
STATION: 213+04.97

HORZ.DATUM: NAD83 2011

GEOID: 2012A

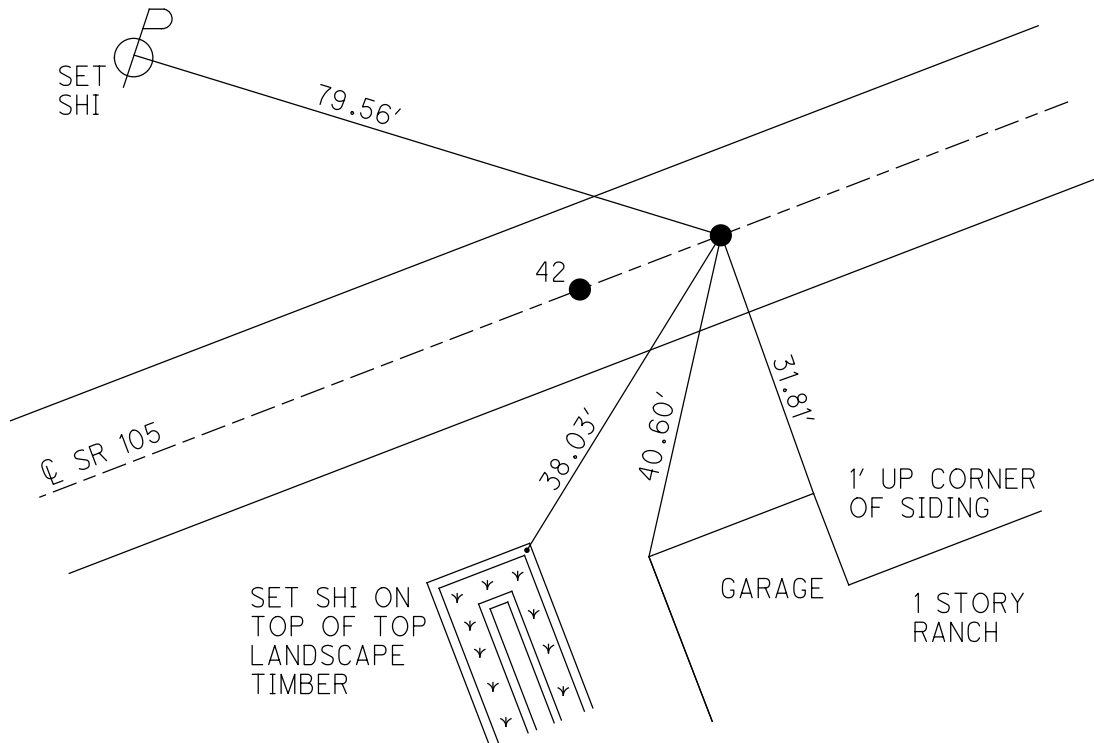
GRID: NORTHING: 665466.407

EASTING: 1755871.830



RECORD:  
 FD P.K./WASHER  
 4/3/00, MC  
 SET P.K./WASHER  
 6/21/00, KPM  
 FD P.K.NAIL  
 REF42  
 4/18/18, JFO  
 FD P.K.NAIL  
 7/29/19, JFO  
 SET MAG/WASHER  
 11/18/19, JFO

DIST.  
 42-43= 16.21'



# O.D.O.T. DISTRICT 2 SURVEY OFFICE

PERSONNEL

REFERENCE NO. 42, 43

SHEET 12 OF 96

NOTES K. Moser

H.C. M. CANTERBURY

DATE 4-3-00

ROUTE S.R. 105

R.C. M. BARNHISEL

WEATHER Sunny

COUNTY OTTAWA

TEMP. +50°F

TOWNSHIP HARRIS

SECTION 8

T6 N R 14 E

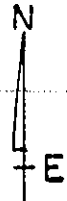
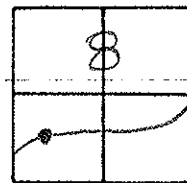
TYPE MONUMENT PK/WASHERS

ON SURFACE - ~~BELOW~~ ON SURFACE

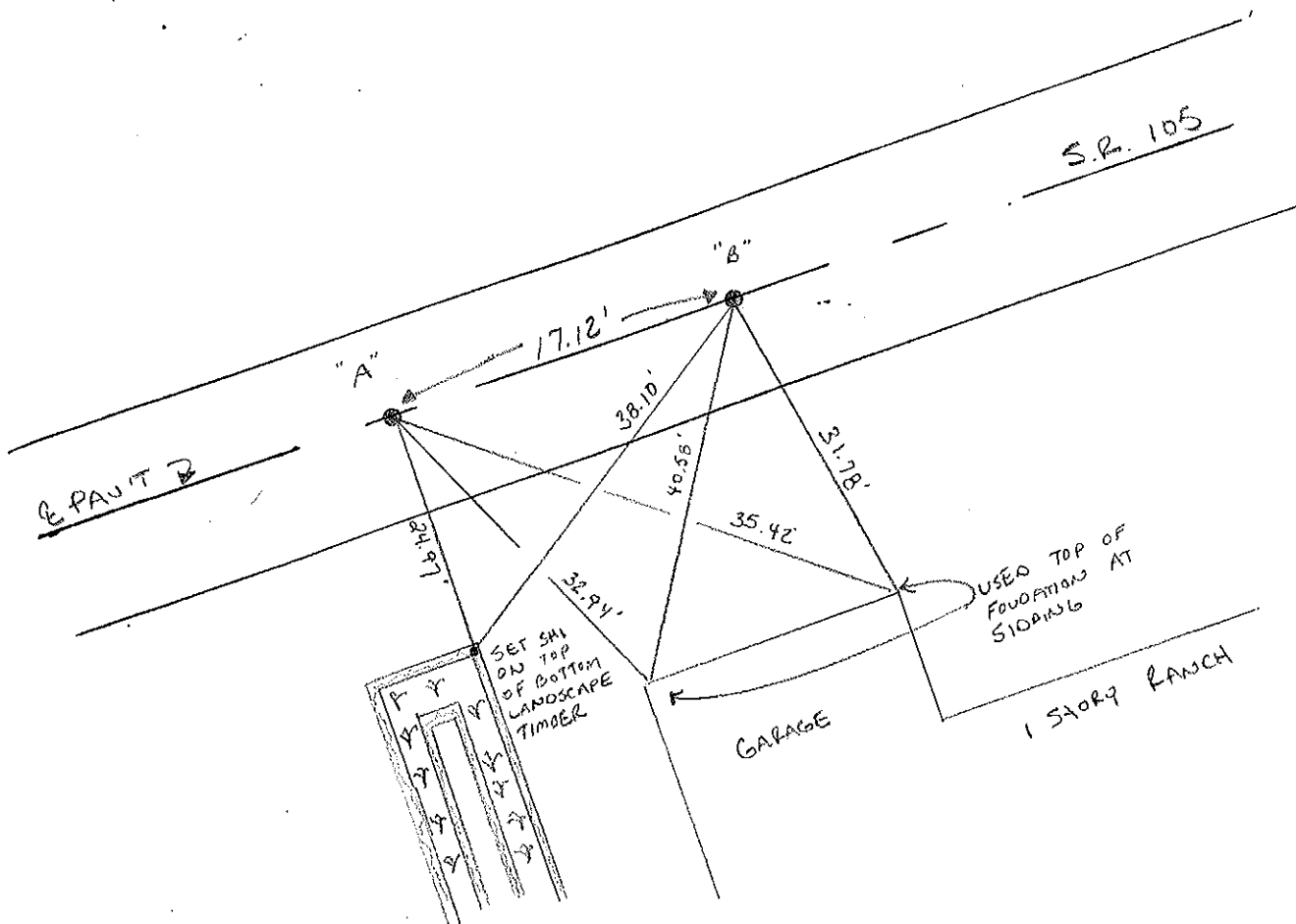
~~LEFT - C~~ PAV'T. - RIGHT A-C B-0.5' RT.

TO RT. EDGE PAVEMENT A-9.9' B-9.4'

S.L.M. 213 +45 -A



RESET PK/WASHER  
 6-21-00  
 K.P.M.



PERSONNEL TITLE PERSONNEL TITLE

COUNTY Ottawa DATE 1-24-74

S. R. 105 WEATHER Fair

SEC. SW 1/4 sec 8 TEMP. 40°

DESCRIPTION Harris Twp.

LEFT

CENTER LINE

RIGHT

JOB NO.

