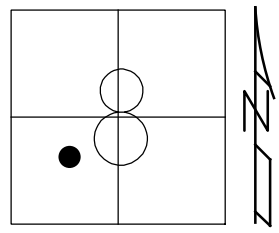


O.D.O.T. DISTRICT 2 SURVEY OFFICE (USE ONLY)

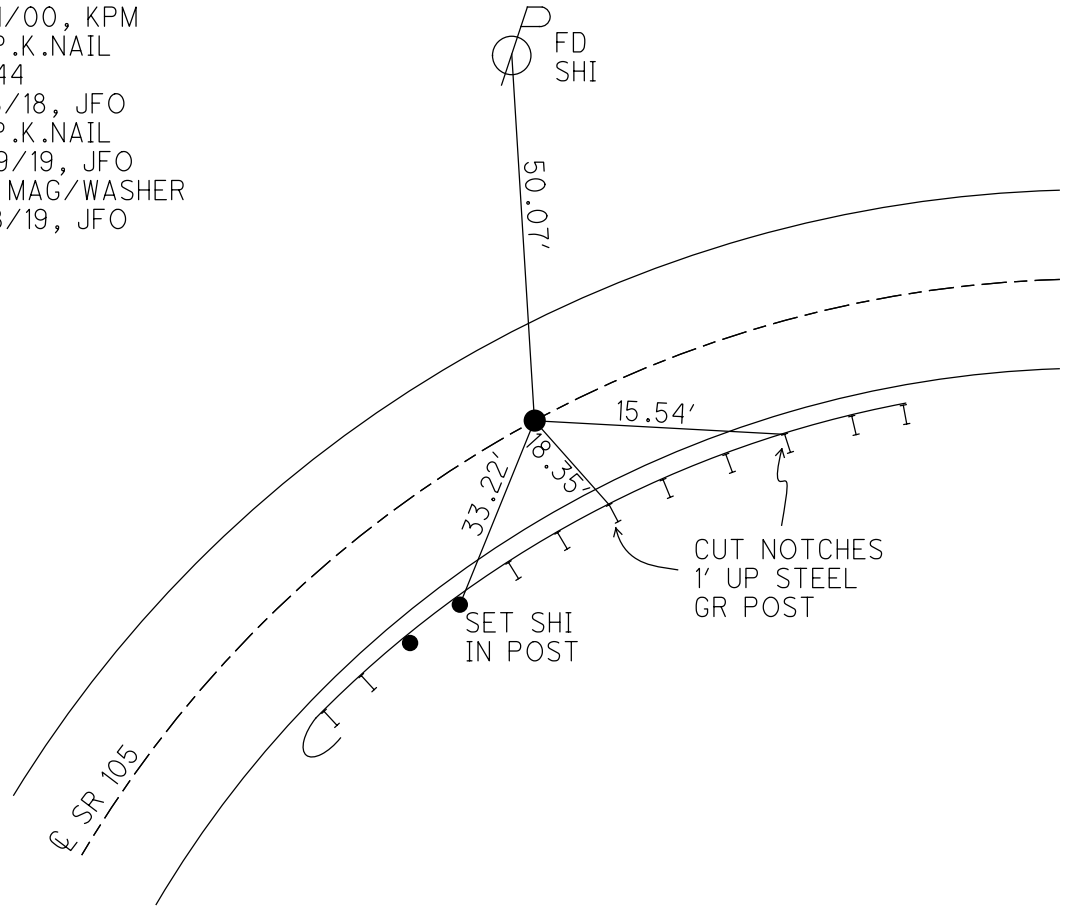
PERSONNEL	REFERENCE NO. <u>44</u>	SHEET <u>16</u> OF <u>63</u>
NOTES <u>RHOADES</u>	DATE <u>7/29/19</u>	ROUTE <u>SR 105</u>
H.C. <u>O'DONNELL</u>	WEATHER <u>SUNNY</u>	COUNTY <u>OTTAWA</u>
R.C. <u>MILLER</u>	TEMP. <u>83°</u>	TOWNSHIP <u>HARRIS</u>
<u>AUBLE</u>		SECTION <u>8</u>
DWG BY <u>BALBAUGH</u>	PID <u>92131</u>	T <u>6</u> N R <u>14</u> E

TYPE MONUMENT P.K.NAIL
 ON SURFACE - ~~BELOW~~ ON
 OFFSET \varnothing PAVEMENT 0.3' ~~RT~~ : RT
9.1' TO RT EDGE PAVEMENT
 STATION: 214+08.31



HORIZ.DATUM: NAD83 2011 GEOID: 2012A
 GRID: NORTHING 65530.781 EASTING: 1755952.705

RECORD: P.I.
 STA 214+32.33
 FD P.K./WASHER
 4/14/00, MC
 SET P.K./WASHER
 6/21/00, KPM
 FD P.K.NAIL
 REF44
 4/18/18, JFO
 FD P.K.NAIL
 7/29/19, JFO
 SET MAG/WASHER
 11/18/19, JFO



O.D.O.T. DISTRICT 2 SURVEY OFFICE

PERSONNEL

NOTES K. MOSER

H.C. M. CANTERBURY

R.C. M. BARNHISEL

REFERENCE NO. 44

DATE 4-14-00

WEATHER SUNNY

TEMP. +60°F

SHEET 13 OF 96

ROUTE S.R. 105

COUNTY OTTAWA

TOWNSHIP HARRIS

SECTION 8

T6 N R 14 E

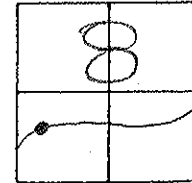
TYPE MONUMENT P.K. NAIL/WASHER

ON SURFACE - ~~BELOW~~ SURFACE

~~LEFT~~ - PAV'T. - RIGHT 0.3'

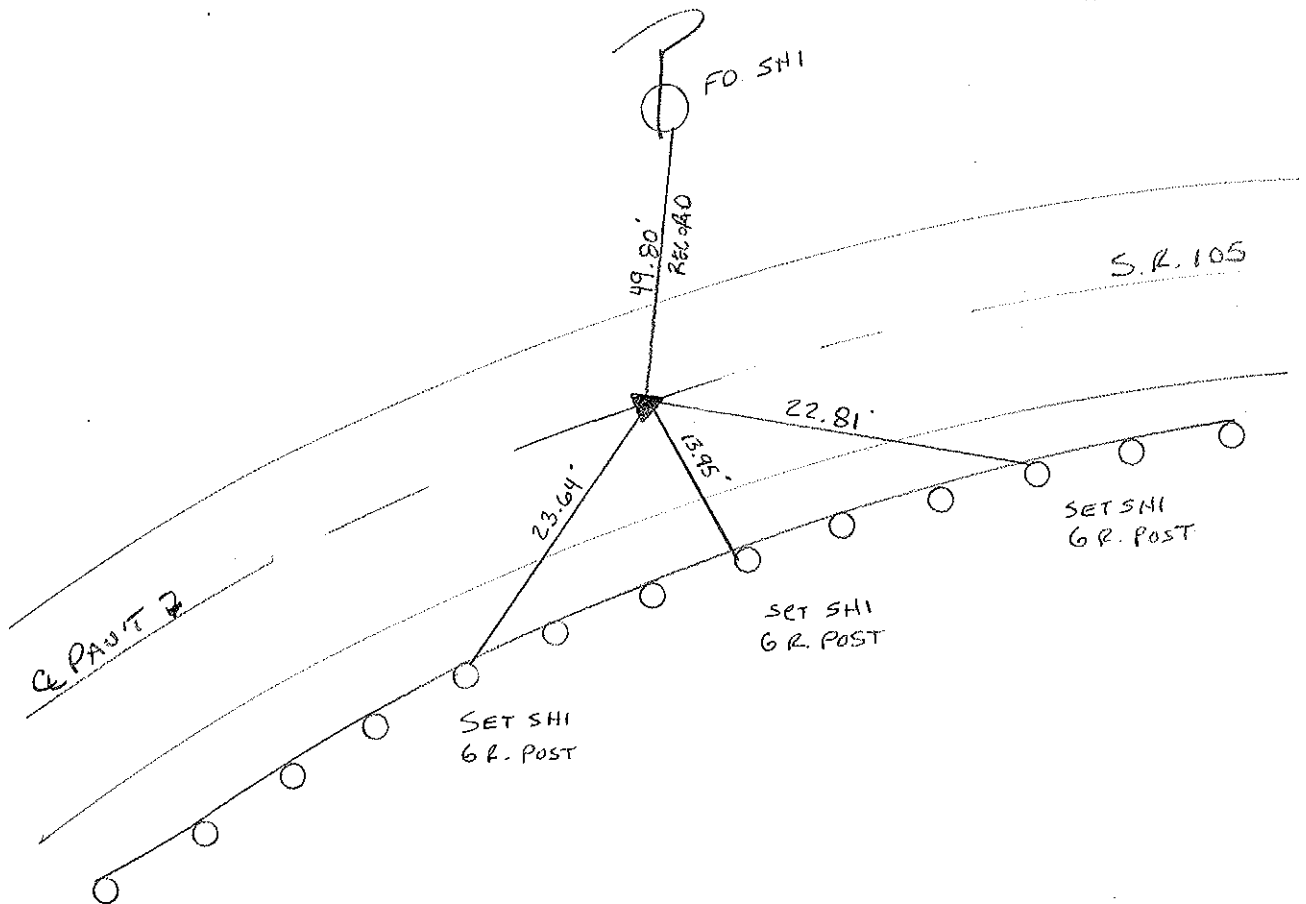
9.1 TO RT EDGE PAVEMENT

S.L.M. 214 +65



RECORD: 214 + 32.33 = P.I.

RESET PK/WASHER
6-21-00
K.P.M



O.D.O.T. DISTRICT 2 SURVEY OFFICE

PERSONNEL

REFERENCE NO. 44

SHEET 2 OF

NOTES 1. Stone

H.C. D. Curtis

R.C. J. Householder

DATE 23 June 89

WEATHER Hot

TEMP. 88°

ROUTE SR #105

COUNTY Ottawa

TOWNSHIP Harris'

SECTION 8

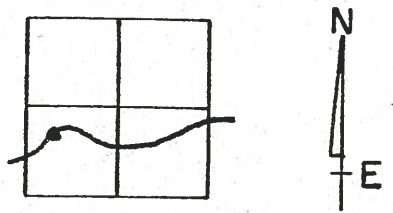
T 6 N R 14 E

TYPE MONUMENT PK Nail & Washer
ON SURFACE - BELOW Surface

~~LEFT - E~~ PAV'T. - RIGHT ±0.3'

9.1 TO RT EDGE PAVEMENT

S.L.M. 214+32.33 = P.I.

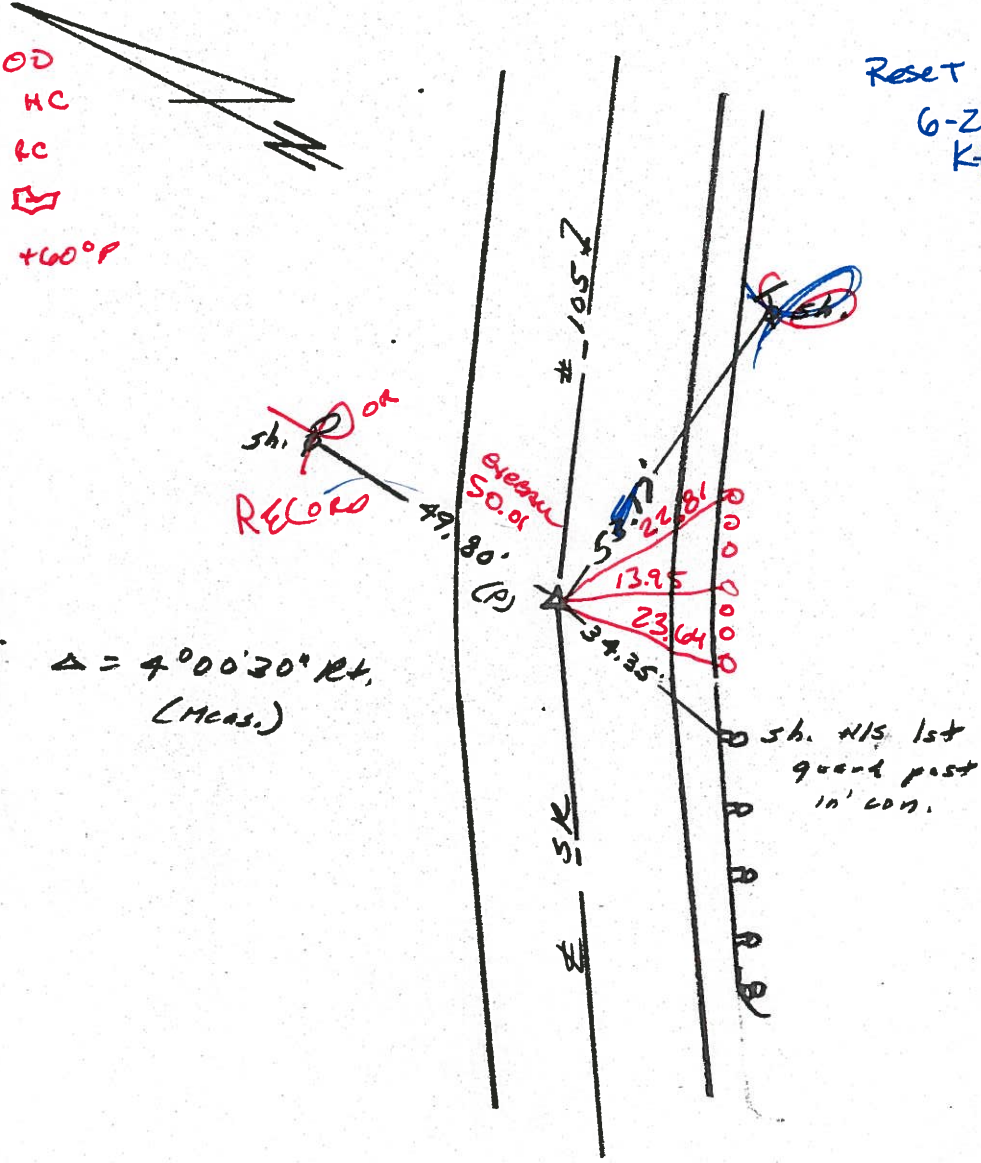


214+65

4-14-00
MAKE HC
Bill & KC
Kevin
Sunny +60°P

Reset PK/WASHER
6-21-00
KPM

P.I. $\Delta = 4^{\circ}00'30''$ Rt.
(Meas.)



O.D.O.T. DISTRICT 2 SURVEY OFFICE

PERSONNEL

REFERENCE NO. 44

SHEET 2 OF

NOTES L. Stone

H.C. D. Curtis

R.C. J. Householder

DATE 23 June 89

WEATHER Hot

TEMP. 88°

ROUTE SR #105

COUNTY Ottawa

TOWNSHIP Harris'

SECTION 8

T 6 N R 14 E

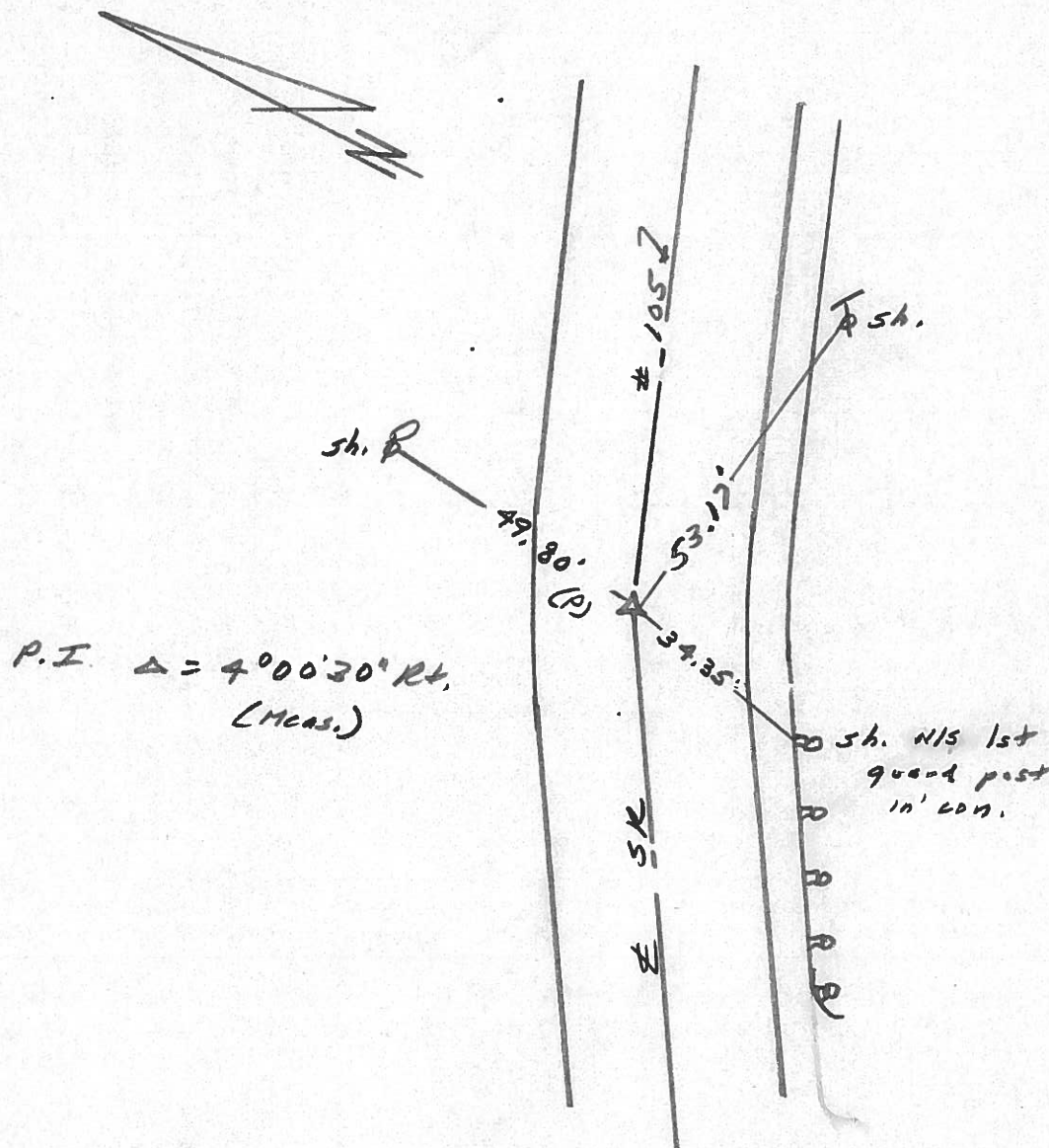
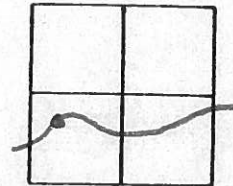
TYPE MONUMENT PK Nail & Washer

ON SURFACE - BELOW Surface

LEFT - & PAV'T. - RIGHT E

 TO EDGE PAVEMENT

S.L.M. 214+32.33 = P.I.



O.D.O.T. DISTRICT 2 SURVEY OFFICE

PERSONNEL

REFERENCE NO. 44

SHEET OF

NOTES Cronin

DRAWN 9/25/87

H.C. Ripple

DATE 5/26/87

R.C. Barbour

WEATHER sunny

Geyman

TEMP. 77°

ROUTE 105

COUNTY Ottawa

TOWNSHIP Harris

SECTION 8

T 6 N R 14 E

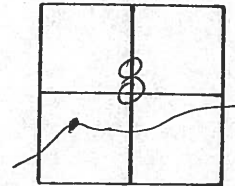
TYPE MONUMENT P.K. & washer

ON SURFACE - BELOW on surface

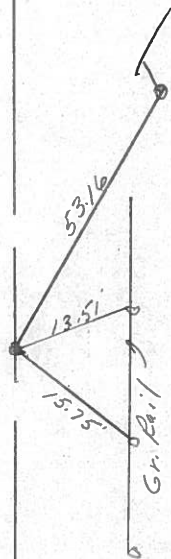
LEFT - CL PAV'T. - RIGHT 1' R. & Pavt.

 TO EDGE PAVEMENT

S.L.M. 214+32.40



P.K. & washer at top
beat spike at top harrow
tooth below surface



& S.R.#1057

O.D.O.T. DISTRICT 2 SURVEY OFFICE

PERSONNEL

REFERENCE NO. 44

SHEET OF

NOTES Hoffman

H.C. BARNHISEL

R.C. LOTHRE

DATE 5-29-85

WEATHER Clear

TEMP. 70°

ROUTE SR 105

COUNTY OTTAWA

TOWNSHIP HARRIS

SECTION 8

T6 N R 14 E

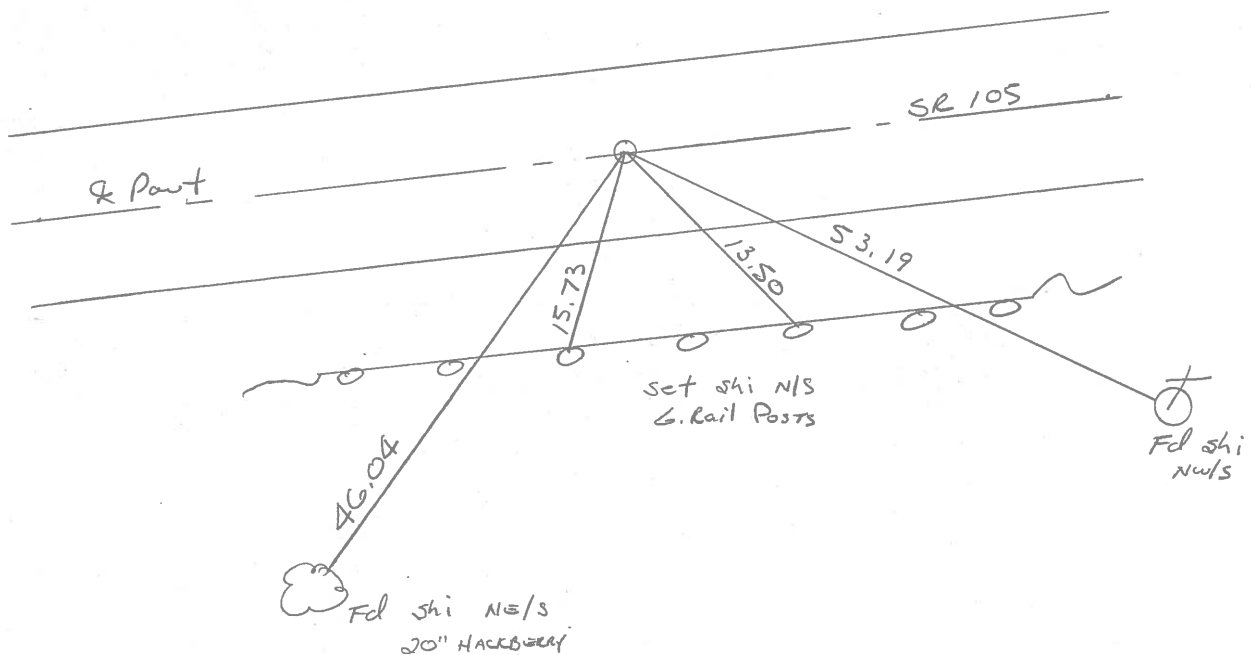
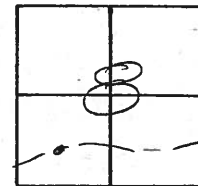
TYPE MONUMENT P.K. / WASHER

ON SURFACE - BELOW yes

~~LEFT~~ - & PAV'T. - ~~RIGHT~~ on L

9.0 TO RT. EDGE PAVEMENT

S.L.M. 214 + 32.33



PERSONNEL TITLE PERSONNEL TITLE COUNTY Ottawa DATE 2-21-74
 S. R. 105 WEATHER Fair
 SEC. 8 TEMP. 50°

DESCRIPTION Harris Twp. LEFT CENTER LINE RIGHT JOB NO.

