

O.D.O.T. DISTRICT 2 SURVEY OFFICE (USE ONLY)

PERSONNEL	REFERENCE NO. <u>46</u>	SHEET <u>18</u> OF <u>63</u>
NOTES	RHOADES	DATE <u>7/29/19</u>
H.C.	O'DONNELL	WEATHER <u>SUNNY</u>
R.C.	MILLER	TEMP. <u>83°</u>
	AUBLE	TOWNSHIP <u>HARRIS</u>
DWG BY	BALBAUGH	SECTION <u>8</u>
	PID <u>92131</u>	T <u>6</u> N R <u>14</u> E

TYPE MONUMENT P.K.NAIL

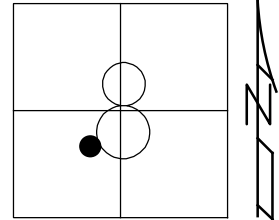
ON SURFACE - ~~BELOW~~ ON

OFFSET 0.8' ~~LT~~ : RT
9.7' TO RT EDGE PAVEMENT

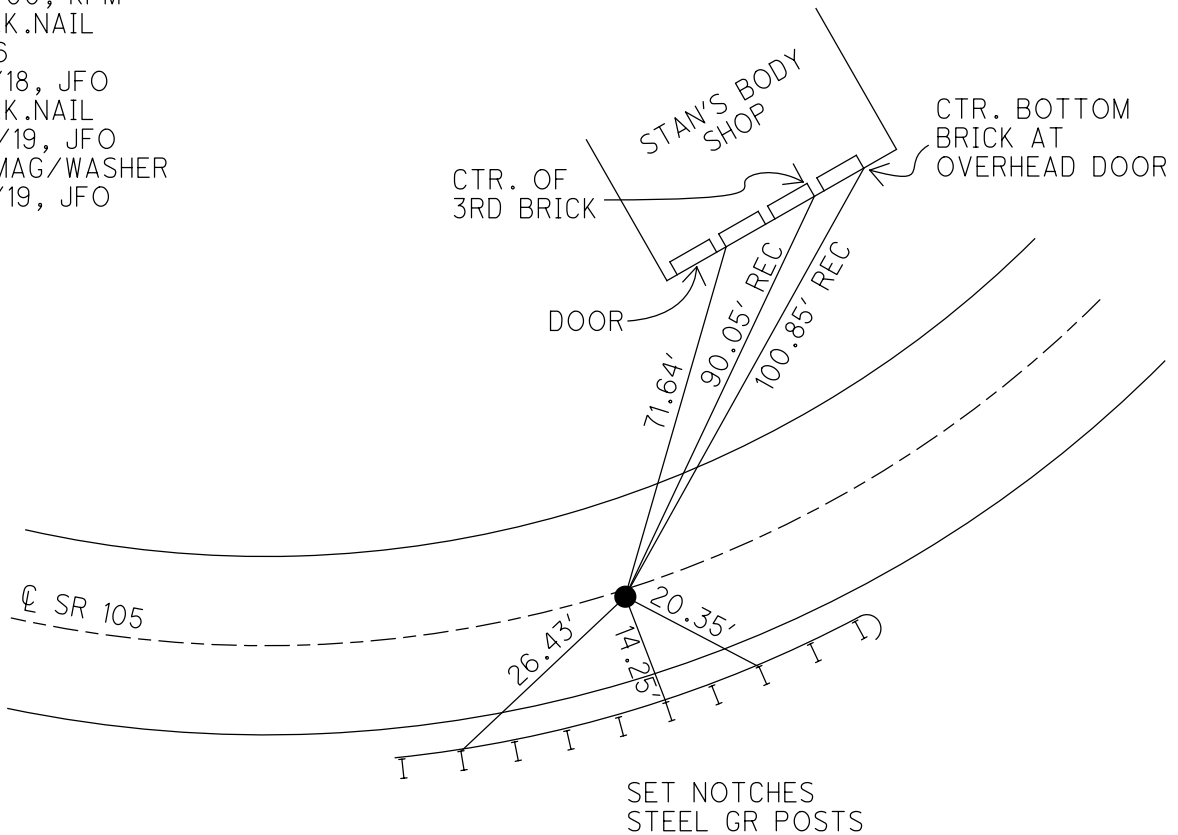
STATION: 221+78.49

HORZ.DATUM: NAD83 2011 GEOID: 2012A

GRID: NORTHING: 665772.319 EASTING: 1756656.003



RECORD: P.I.
 STA 222+02.80
 $\Delta = 01^\circ 42' \text{ LT}$
 FD P.K./WASHER
 4/14/00, MC
 SET P.K./WASHER
 6/21/00, KPM
 FD P.K.NAIL
 REF46
 4/18/18, JFO
 FD P.K.NAIL
 7/29/19, JFO
 SET MAG/WASHER
 11/18/19, JFO



O.D.O.T. DISTRICT 2 SURVEY OFFICE

PERSONNEL

REFERENCE NO. 46

SHEET 15 OF 96

NOTES K. MOSER

H.C. M. CANTERBURY

DATE 4-14-00

ROUTE S.R. 105

R.C. M. BARNHISEL

WEATHER SUNNY

COUNTY OTTAWA

TEMP. +60°F

TOWNSHIP HARRIS

SECTION 8

T 6 N R 14 E

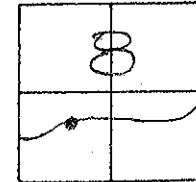
TYPE MONUMENT PK/WASHER

ON SURFACE - ~~BELOW~~ SURFACE

~~LEFT - C. PAVT.~~ - RIGHT 0.8' RT

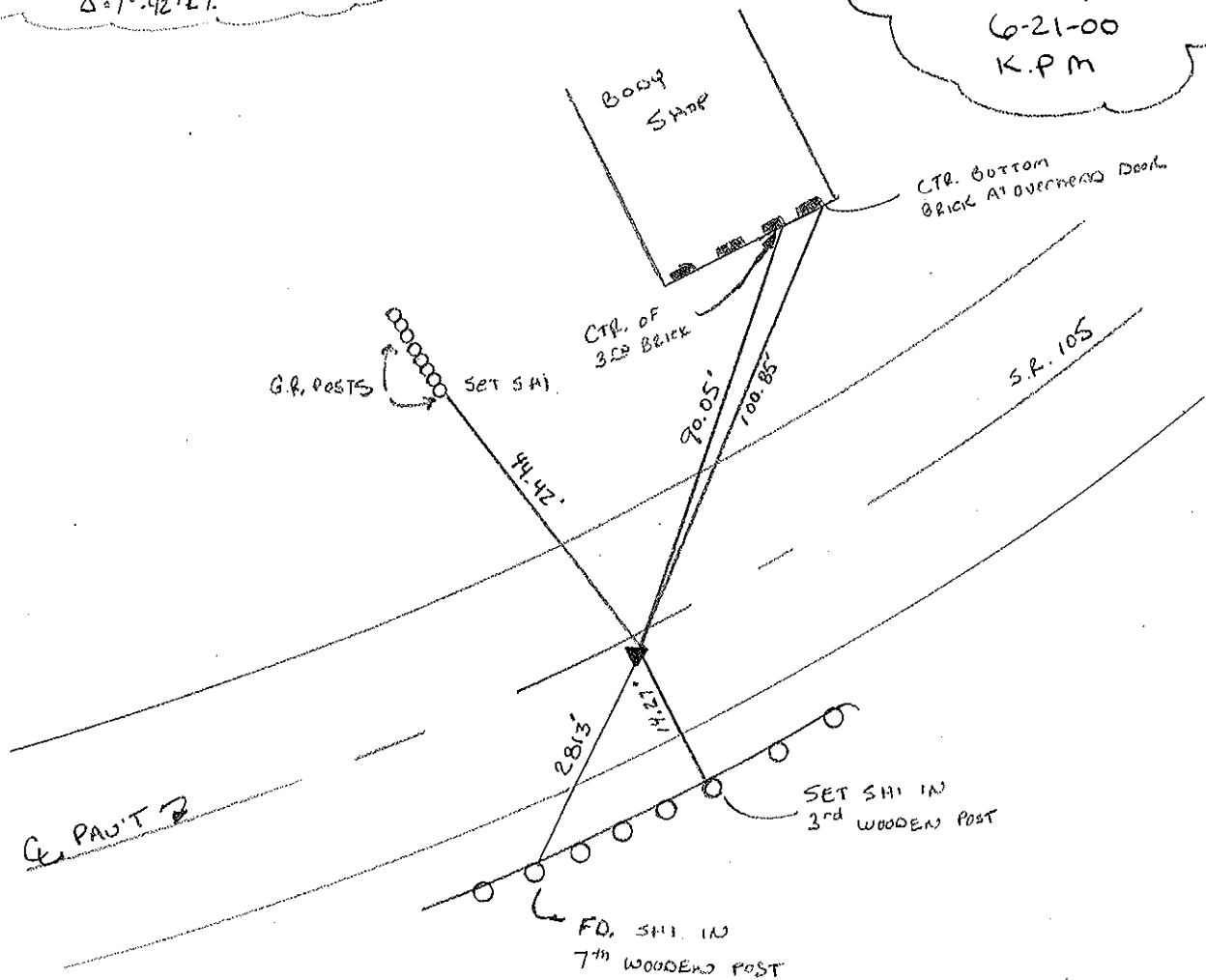
9.7 TO RT. EDGE PAVEMENT

S.L.M. 222 + 35



RECORD 222 + 02.80 = P.J.
Δ = 1° 42' 47"

RESET PK/WASHER
6-21-00
K.P.M.



O.D.O.T. DISTRICT 2 SURVEY OFFICE

PERSONNEL

REFERENCE NO. 46

SHEET 4 OF

NOTES 1. Stone

H.C. J. Curtis

DATE 26 June 89

ROUTE SR #105

R.G. J. Householder

WEATHER Hot

COUNTY Ottawa

TEMP. 90°

TOWNSHIP Harris

SECTION 8

T C N R I E

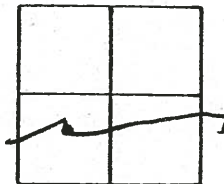
TYPE MONUMENT PK Nail & Washer

ON SURFACE - BELOW Surface

LEFT - 0.8 ft PAV'T. - RIGHT 4th. E. put

9.7 TO Rt EDGE PAVEMENT

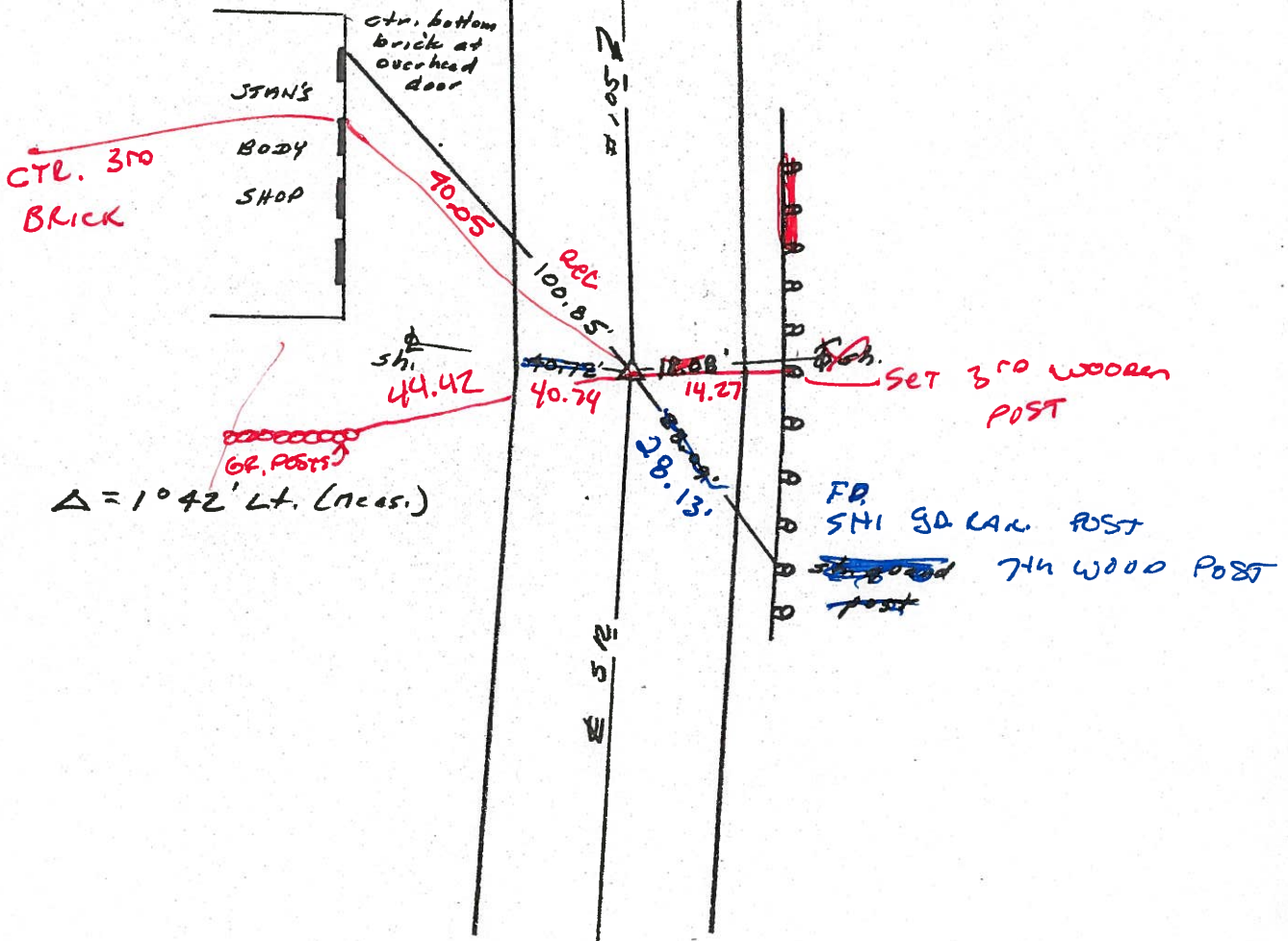
S.L.M. 222+02.80 = P.I.



222+35

4-14-00
MARK HC
BILL. RC
Kern

Reset PK/WASHER
6-21-00
KPM



$\Delta = 1^{\circ} 42' \text{ Lt. (Acas.)}$

O.D.O.T. DISTRICT 2 SURVEY OFFICE

PERSONNEL

REFERENCE NO. 46

SHEET 4 OF

NOTES 1. Stone

H.C. D. Curtis

R.C. J. Householder

DATE 26 June 89

WEATHER Hot

TEMP. 90°

ROUTE SR#105

COUNTY Ottawa

TOWNSHIP Harris

SECTION 8

T C N R 14 E

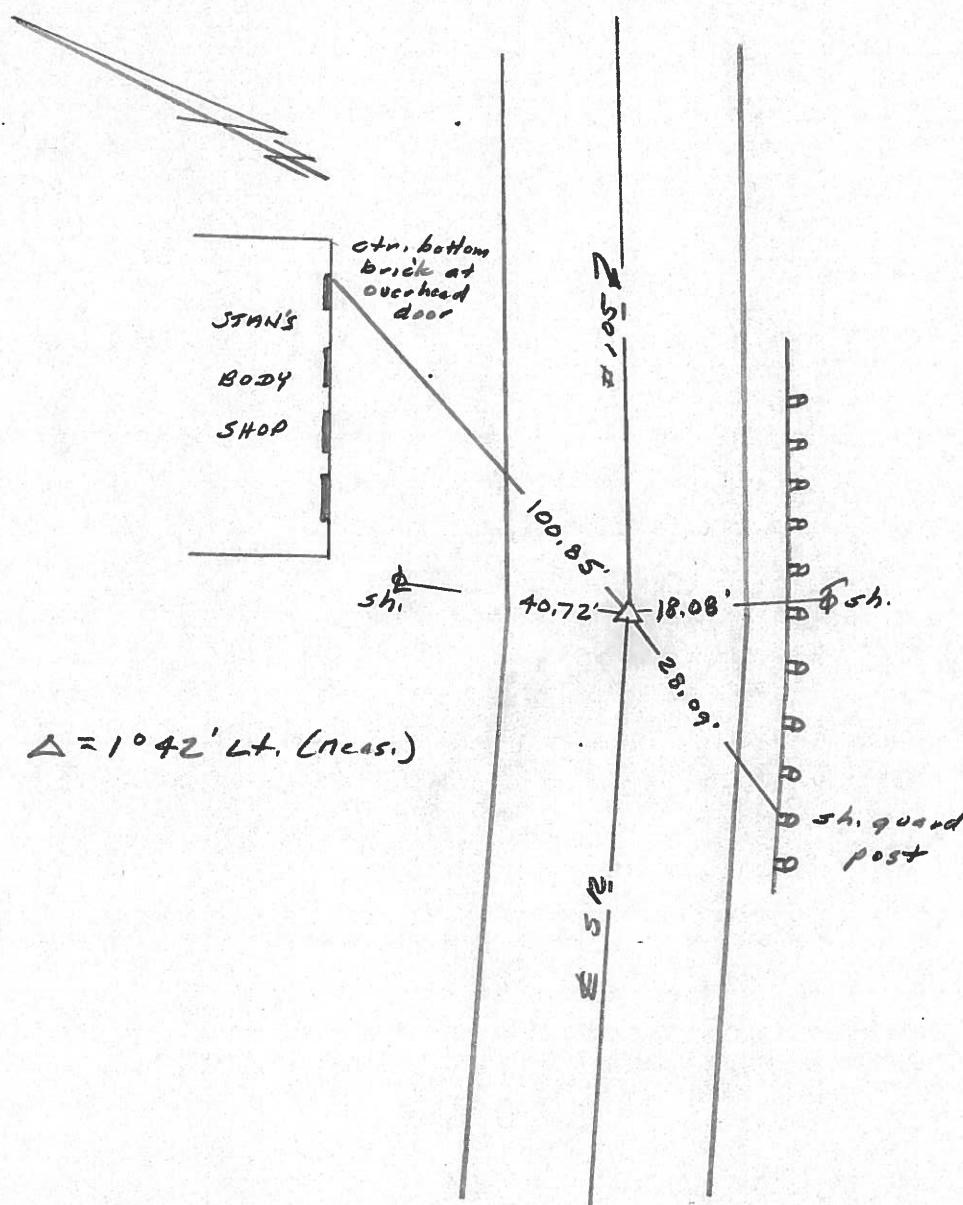
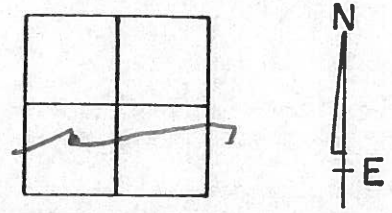
TYPE MONUMENT PK Nail & Washer

ON SURFACE - BELOW Surface

LEFT - ☉ PAV'T. - RIGHT 16 Lt. & put

 TO EDGE PAVEMENT

S.L.M. 222+02.80 = P.I.



O.D.O.T. DISTRICT 2 SURVEY OFFICE

PERSONNEL

NOTES Cronin
 H.C. Ripple
 R.C. Barbour
Geyman

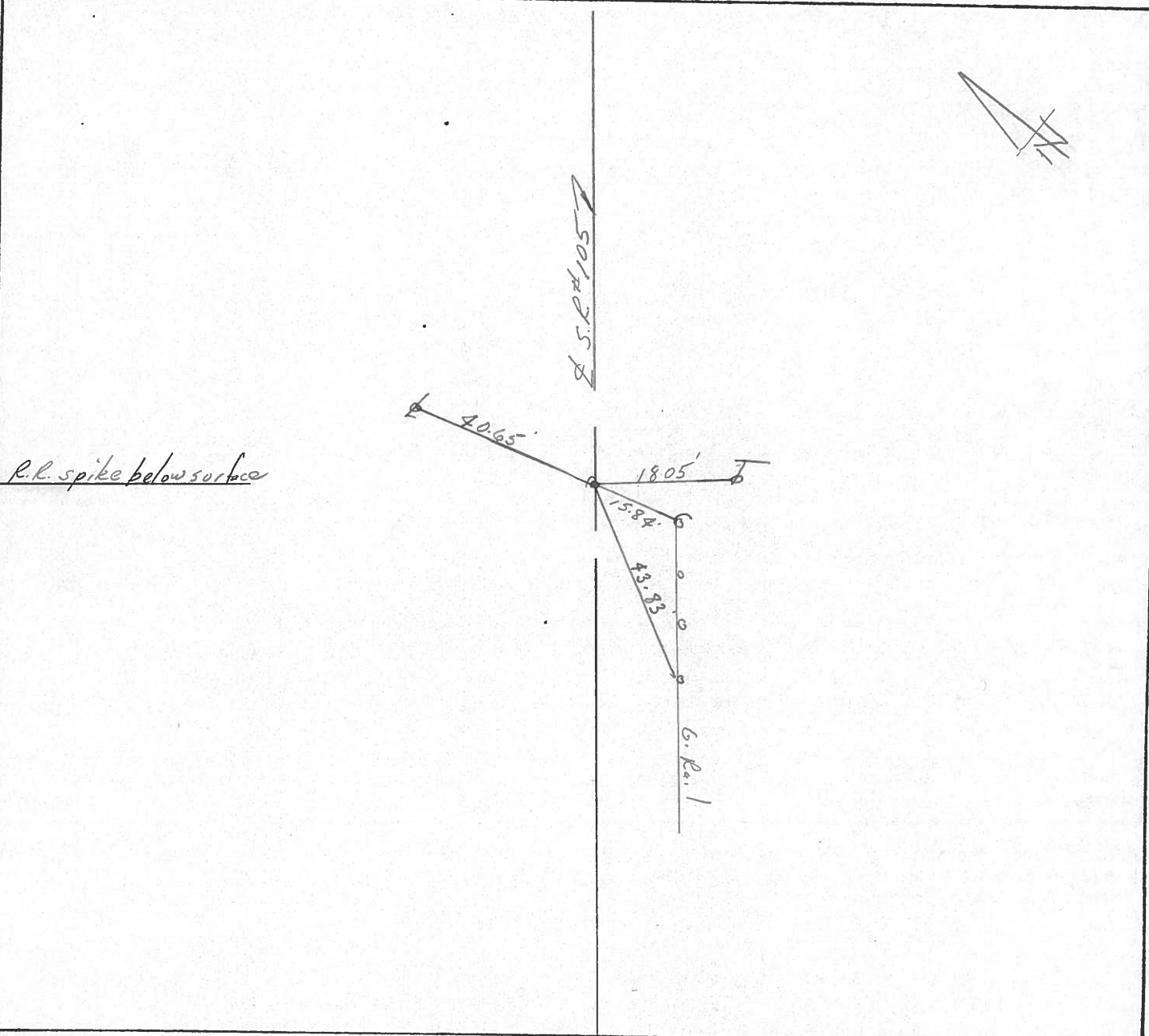
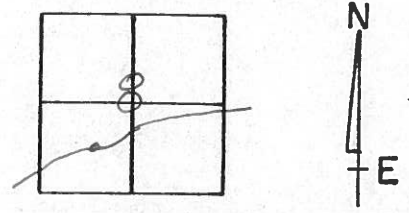
REFERENCE NO. 46

DRAWN 9/25/87
 DATE 5/26/87
 WEATHER sunny
 TEMP. 77°

SHEET OF

ROUTE 105
 COUNTY Ottawa
 TOWNSHIP Harris
 SECTION B
 T. 6 N R. 14 E

TYPE MONUMENT P.K. washer
 ON SURFACE - BELOW on surface
 LEFT - ☉ PAV'T. - RIGHT ☉
 TO EDGE PAVEMENT
 S.L.M. 223+03



PERSONNEL TITLE PERSONNEL TITLE

COUNTY Ottawa DATE 2-21-74

S. R. 105 WEATHER Fair

SEC. 8 TEMP. 50°

DESCRIPTION Harris Twp. JOB NO.

LEFT CENTER LINE RIGHT

