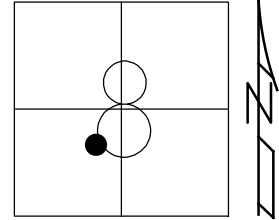
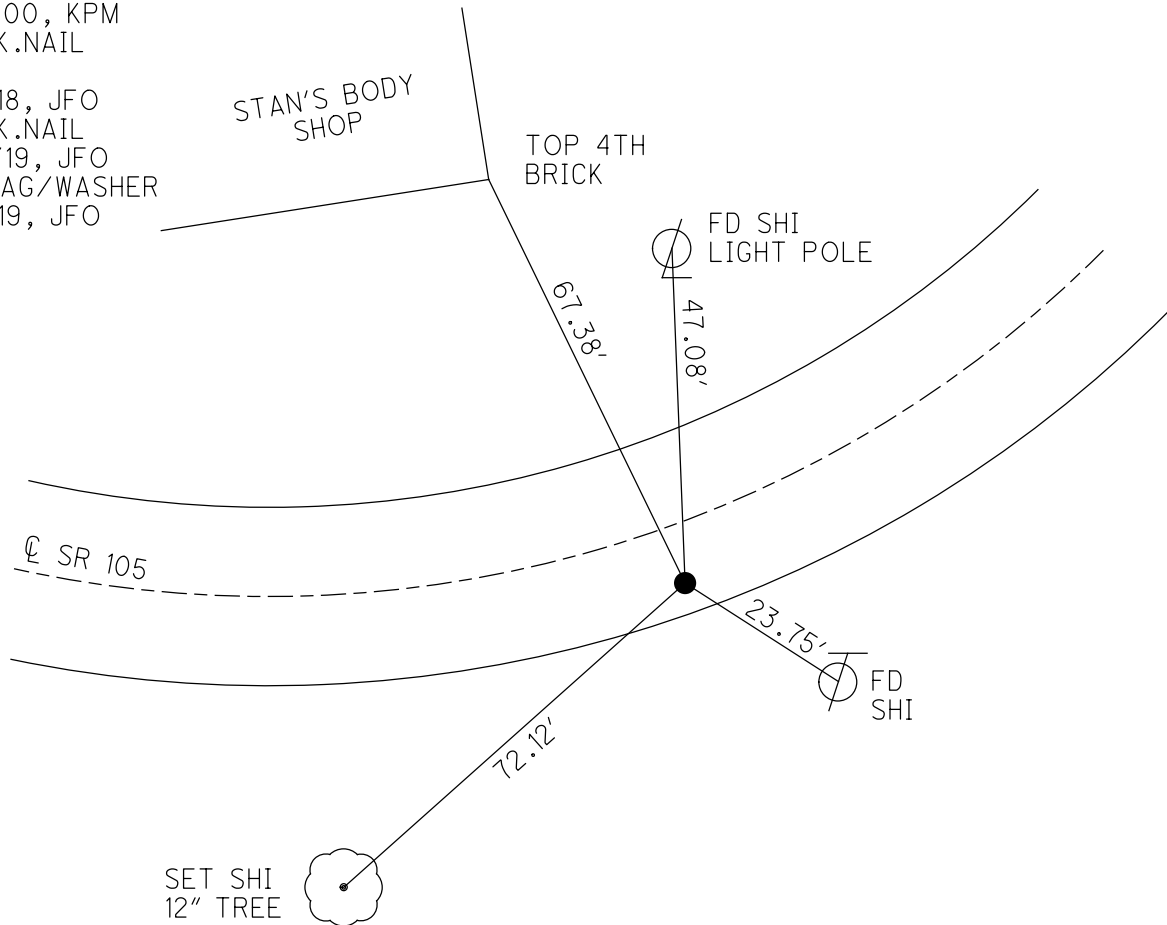


O.D.O.T. DISTRICT 2 SURVEY OFFICE (USE ONLY)

| | | |
|---|------------------------------|------------------------------|
| PERSONNEL | REFERENCE NO. <u>47</u> | SHEET <u>19</u> OF <u>63</u> |
| NOTES <u>RHOADES</u> | DATE <u>7/30/19</u> | ROUTE <u>SR 105</u> |
| H.C. <u>O'DONNELL</u> | WEATHER <u>PARTLY CLOUDY</u> | COUNTY <u>OTTAWA</u> |
| R.C. <u>MILLER</u> | TEMP. <u>75°</u> | TOWNSHIP <u>HARRIS</u> |
| | | SECTION <u>8</u> |
| DWG BY <u>BALBAUGH</u> | PID <u>92131</u> | T <u>6</u> N R <u>14</u> E |
| TYPE MONUMENT <u>P.K.NAIL</u> | | |
| ON SURFACE - BELOW <u>ON</u> | | |
| OFFSET <u>☉</u> PAVEMENT <u>6.8'</u> LT : RT | | |
| <u>3.5'</u> TO RT EDGE PAVEMENT | | |
| STATION: <u>222+91.41</u> | | |
| HORZ.DATUM: <u>NAD83 2011</u> | GEOID: <u>2012A</u> | |
| GRID: NORTHING: <u>665772.266</u> | EASTING: <u>1756768.923</u> | |



RECORD: P.I.
 STA 223+24.50
 $\Delta = 01^\circ 57' 30''$ LT
 FD P.K./WASHER
 4/14/00, MC
 SET P.K./WASHER
 6/24/00, KPM
 FD P.K.NAIL
 REF47
 4/18/18, JFO
 FD P.K.NAIL
 7/30/19, JFO
 SET MAG/WASHER
 11/18/19, JFO



O.D.O.T. DISTRICT 2 SURVEY OFFICE

PERSONNEL

REFERENCE NO. 47

SHEET 16 OF 96

NOTES K. MOSER

H.C. M. CANTERBURY

DATE 4-14-00

ROUTE S.R. 105

R.C. M. BARNHISEL

WEATHER SUNNY

COUNTY OTTAWA

TEMP. +60°F

TOWNSHIP HARRIS

SECTION 8

T6 N R 14 E

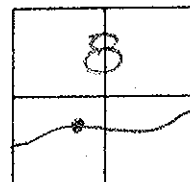
TYPE MONUMENT PK/WASHER

ON SURFACE - ~~BELOW~~ SURFACE

~~LEFT~~ - ~~PAV'T.~~ - RIGHT 6.8' RT.

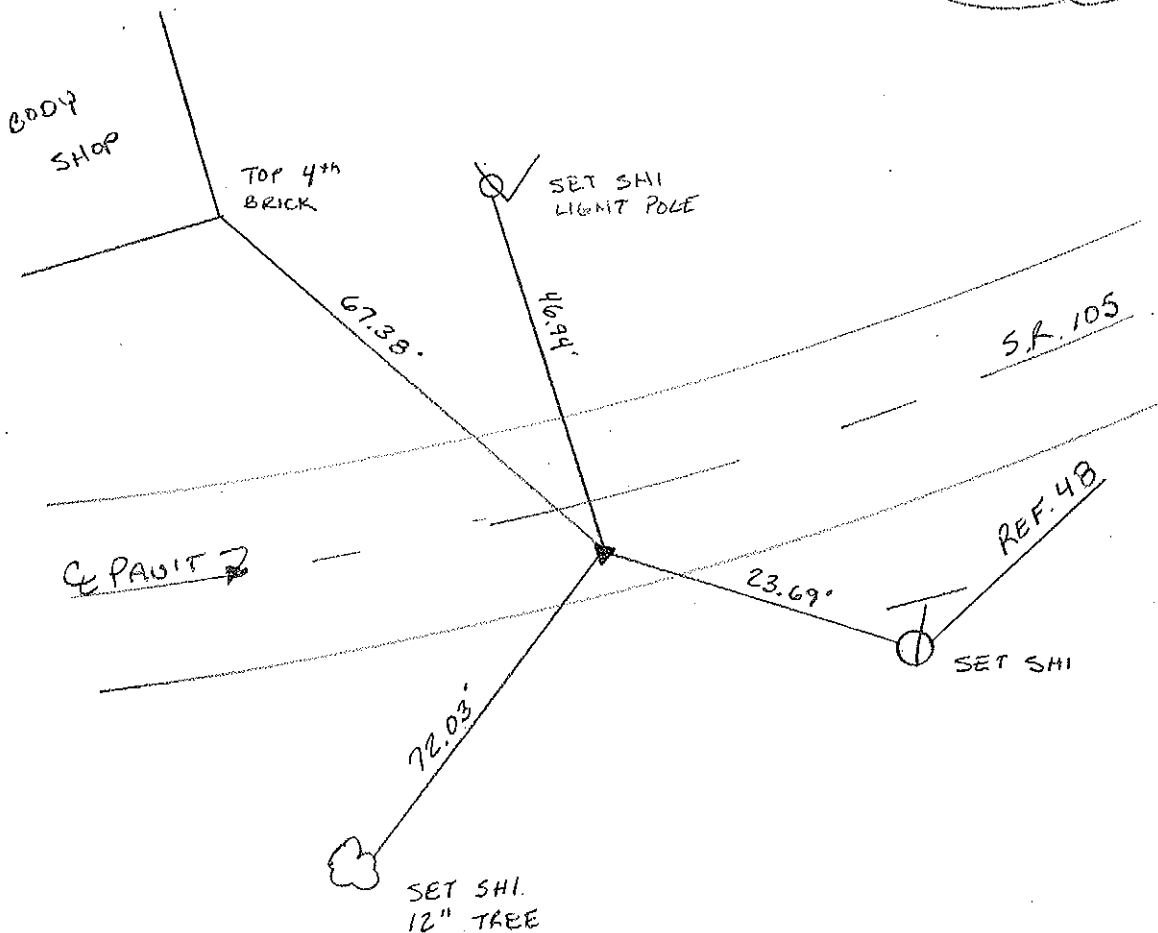
3.5' TO RT. EDGE PAVEMENT

S.L.M. 223 + 48



RECORD: $223 + 24.5 = P.I.$
 $\Delta = 1^{\circ}57'30'' LT.$

RESET PK/WASHER
 6-21-00
 K.P.M.



O.D.O.T. DISTRICT 2 SURVEY OFFICE

PERSONNEL

REFERENCE NO. ~~774~~ 47

SHEET 5 OF

NOTES 1. Stone

H.C. D. Curtis

R.G. J. Hausholder

DATE 26 June 89

WEATHER Hot

TEMP. 91°

ROUTE SR#105

COUNTY Ottawa

TOWNSHIP Harris'

SECTION 8

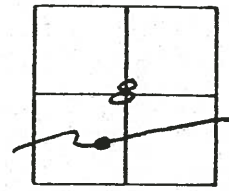
T. R.

TYPE MONUMENT R.R. Spk.

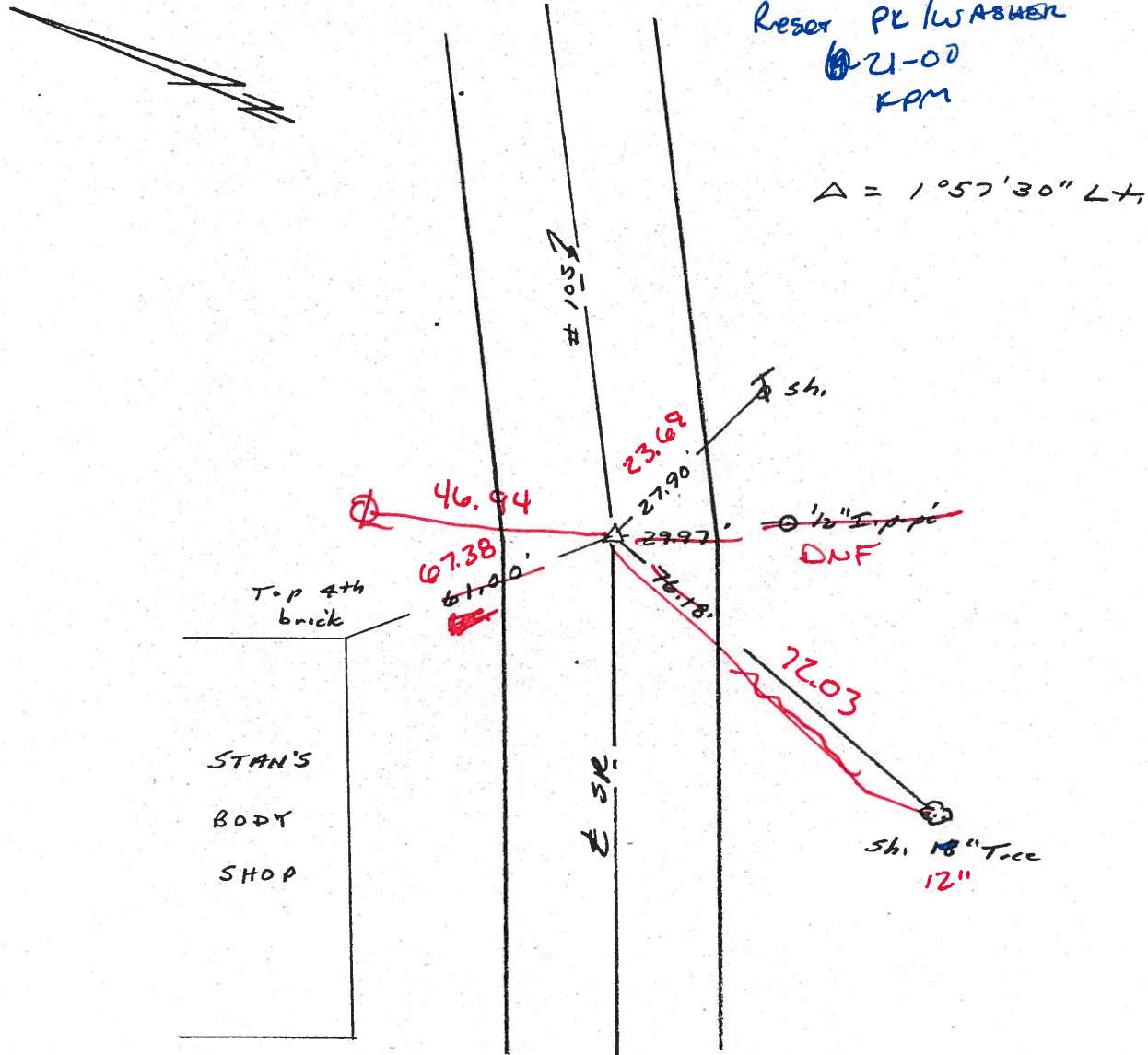
ON SURFACE - BELOW 3" deep

LEFT - CL PAV'T. - RIGHT ± 6.8 RT CL
35 TO RT EDGE PAVEMENT

S.L.M. 223+15.64 = P.I.



223+48



O.D.O.T. DISTRICT 2 SURVEY OFFICE

PERSONNEL

REFERENCE NO. 47B SHEET OF

NOTES Cronin

H.C. Ripple

R.C. Barbour

Geyman

DATE 5/26/87

WEATHER sunny

TEMP. 80°

ROUTE 105

COUNTY Ottawa

TOWNSHIP Harris

SECTION 8

T 6 N R 14 E

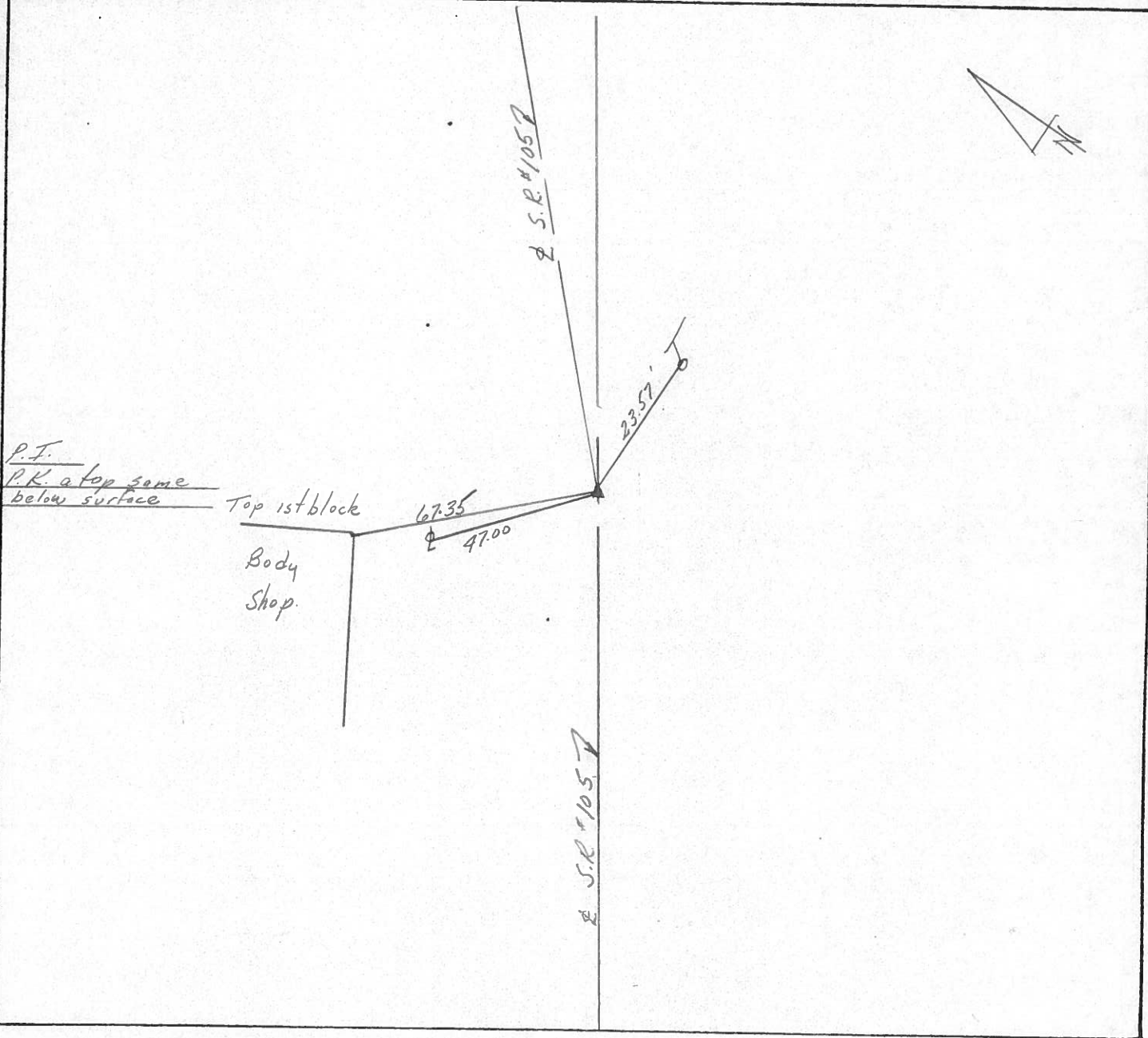
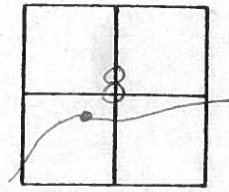
TYPE MONUMENT P.K. & washer

ON SURFACE - BELOW on surface

LEFT - ☉ PAV'T. - RIGHT 6.5' Rth. & Pavt.

TO EDGE PAVEMENT

S.L.M. 223 + 2450



PERSONNEL TITLE PERSONNEL TITLE

COUNTY Ottawa

DATE 2-27-74

S. R. 105

WEATHER cold-wind

SEC. 8

TEMP. 30°

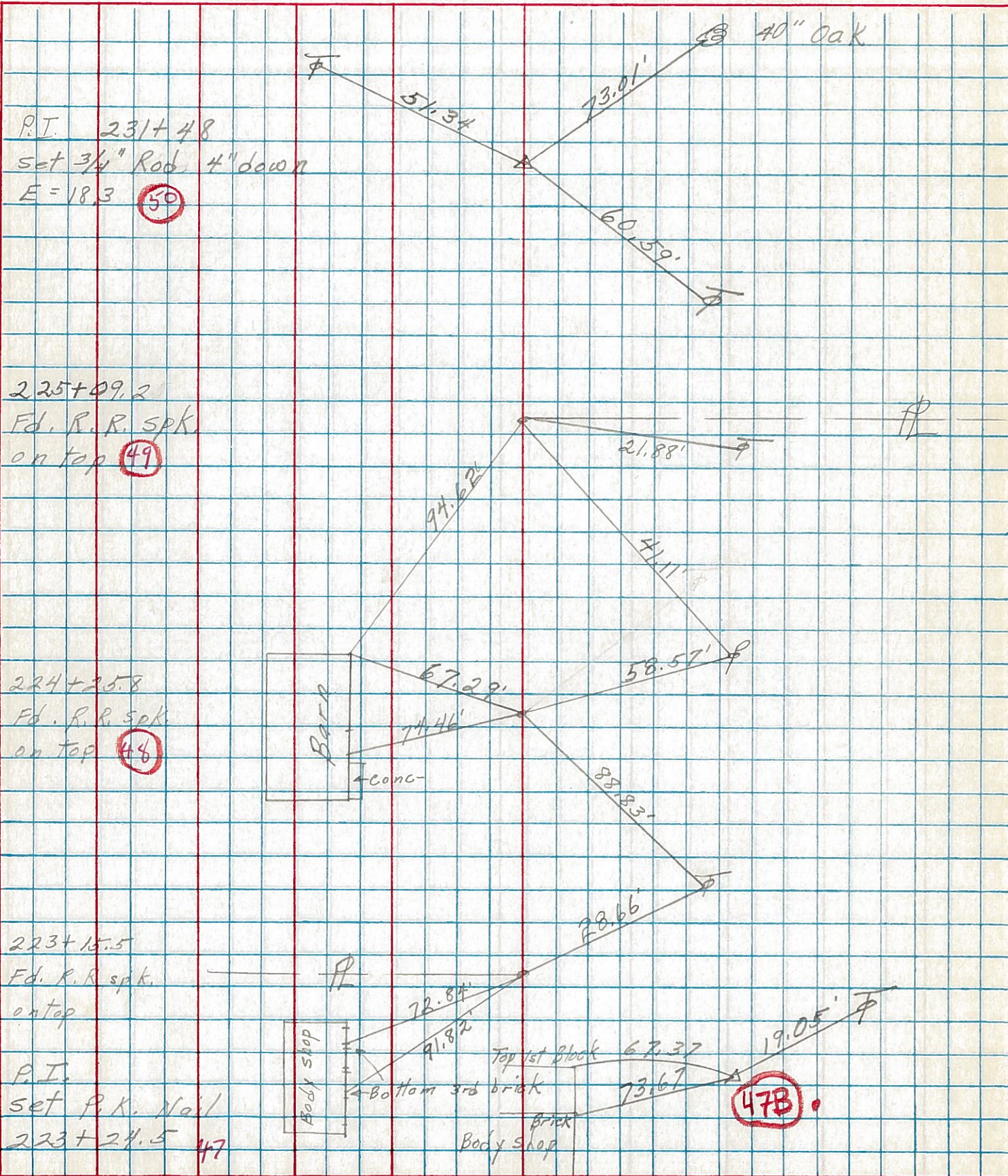
DESCRIPTION Harris Twp

JOB NO.

LEFT

CENTER LINE

RIGHT



P.I. 231+48
 set 3/4" Rod 4" down
 E=18.3 (50)

225+09.2
 Fd. R.R. Spk.
 on top (49)

224+25.8
 Fd. R.R. Spk.
 on top (46)

223+15.5
 Fd. R.R. Spk.
 on top

P.I.
 set P.K. Nail
 223+24.5 (47)

(47B)