

# O.D.O.T. DISTRICT 2 SURVEY OFFICE

PERSONNEL

REFERENCE NO. 47-A

SHEET 16A OF 96

NOTES K. MOSER

H.C. M. CANTERBURY

R.C. M. BARNIBEL

DATE 4-14-00

WEATHER Sunny

TEMP. +60°F

ROUTE SR 105

COUNTY OTTAWA

TOWNSHIP HARRIS

SECTION 8

T O N R I V E

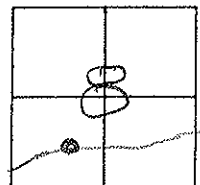
TYPE MONUMENT No Point Re-set  
LIFE-LINE @ Location

ON SURFACE - BELOW —

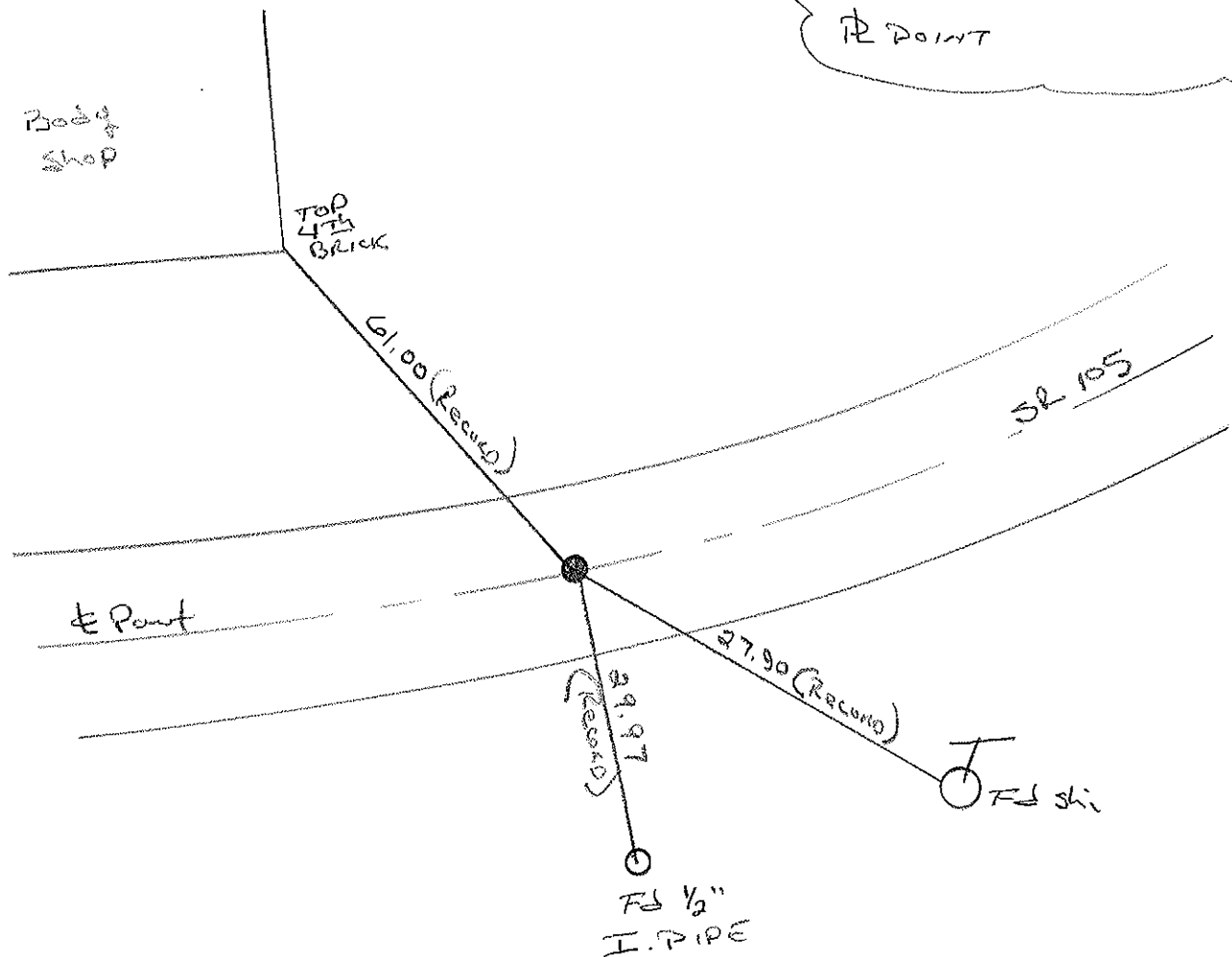
~~LEFT~~ - ℄ PAV'T. - ~~RIGHT~~ ON ℄

— TO — EDGE PAVEMENT

S.L.M. —



Record: 1989 Notes, F.L.  
R.R. SPIKE 2" deep  
℄ POINT



O.D.O.T. DISTRICT 2 SURVEY OFFICE

PERSONNEL

REFERENCE NO. 47-A

SHEET \_\_\_\_\_ OF \_\_\_\_\_

NOTES Hoffman

H.C. BARANISEL

R.C. LOCHKE

DATE 5-29-85

WEATHER Clear

TEMP. 70°

ROUTE SR 105

COUNTY OTTAWA

TOWNSHIP HARRIS

SECTION 8

T. 6 N R. 14 E

TYPE MONUMENT P.P. SPIKE

ON SURFACE - BELOW 1 1/2"

~~LEFT - & PAV'T. - RIGHT~~ on &

10.0 TO RT. EDGE PAVEMENT

S.L.M. 223+16.05

