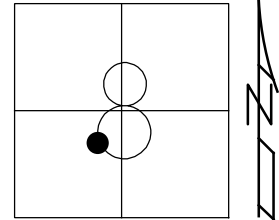


O.D.O.T. DISTRICT 2 SURVEY OFFICE (USE ONLY)

PERSONNEL \_\_\_\_\_ REFERENCE NO. 49 SHEET 21 OF 63  
 NOTES RHOADES DATE 7/30/19 ROUTE SR 105  
 H.C. O'DONNELL WEATHER PARTLY CLOUDY COUNTY OTTAWA  
 R.C. MILLER TEMP. 75° TOWNSHIP HARRIS  
 DWG BY BALBAUGH PID 92131 SECTION 8  
 T 6 N R 14 E

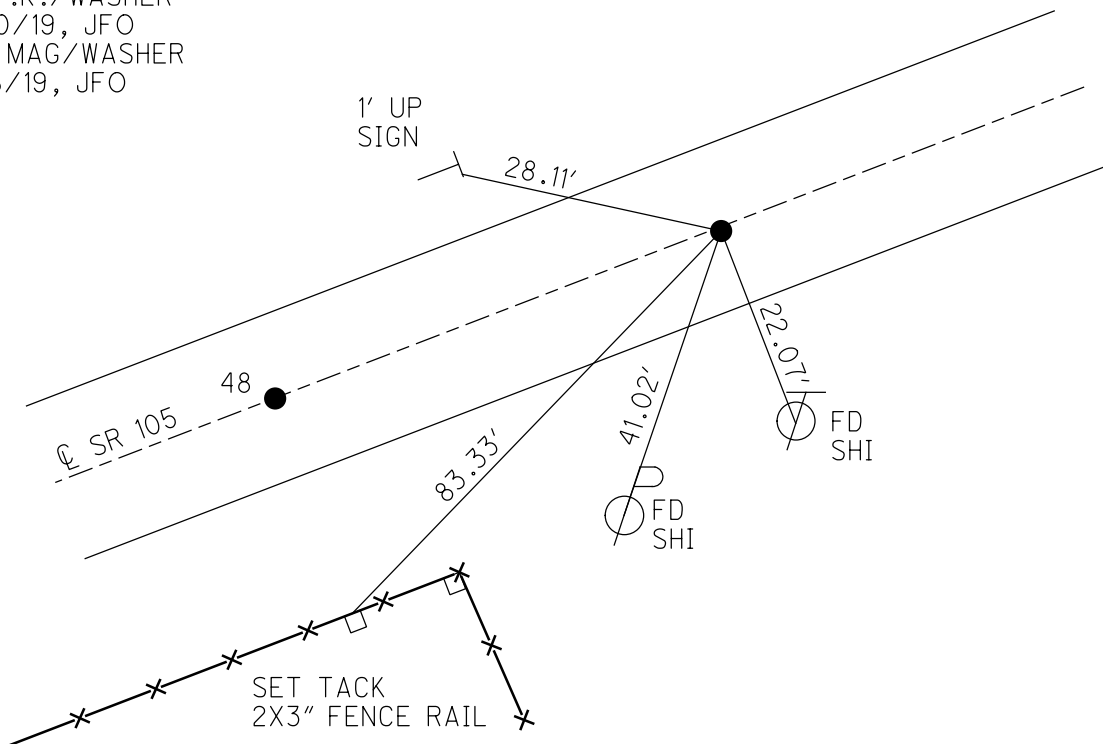
TYPE MONUMENT P.K./WASHER  
 ON SURFACE - ~~BELOW~~ ON  
 OFFSET 0.3' RT : RT  
10.0' TO RT EDGE PAVEMENT  
 STATION: 224+84.90



HORZ. DATUM: NAD83 2011 GEOID: 2012A  
 GRID: NORTHING: 665780.993 EASTING: 1756962.204

RECORD:  
 FD P.K./WASHER  
 4/14/00, MC  
 SET P.K./WASHER  
 6/21/00, KPM  
 FD P.K./WASHER  
 REF49  
 4/18/18, JFO  
 FD P.K./WASHER  
 7/30/19, JFO  
 SET MAG/WASHER  
 11/18/19, JFO

DIST.  
 48-49= 83.51'



# O.D.O.T. DISTRICT 2 SURVEY OFFICE

PERSONNEL

REFERENCE NO. 48,49

SHEET 17 OF 96

NOTES K. Moser

H.C. M. CANTERBURY

DATE 4-14-00

ROUTE S.R. 105

R.C. M. BARNISEL

WEATHER SUNNY

COUNTY OTTAWA

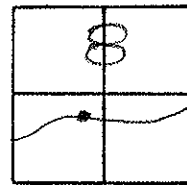
TEMP. +60°F

TOWNSHIP HARRIS

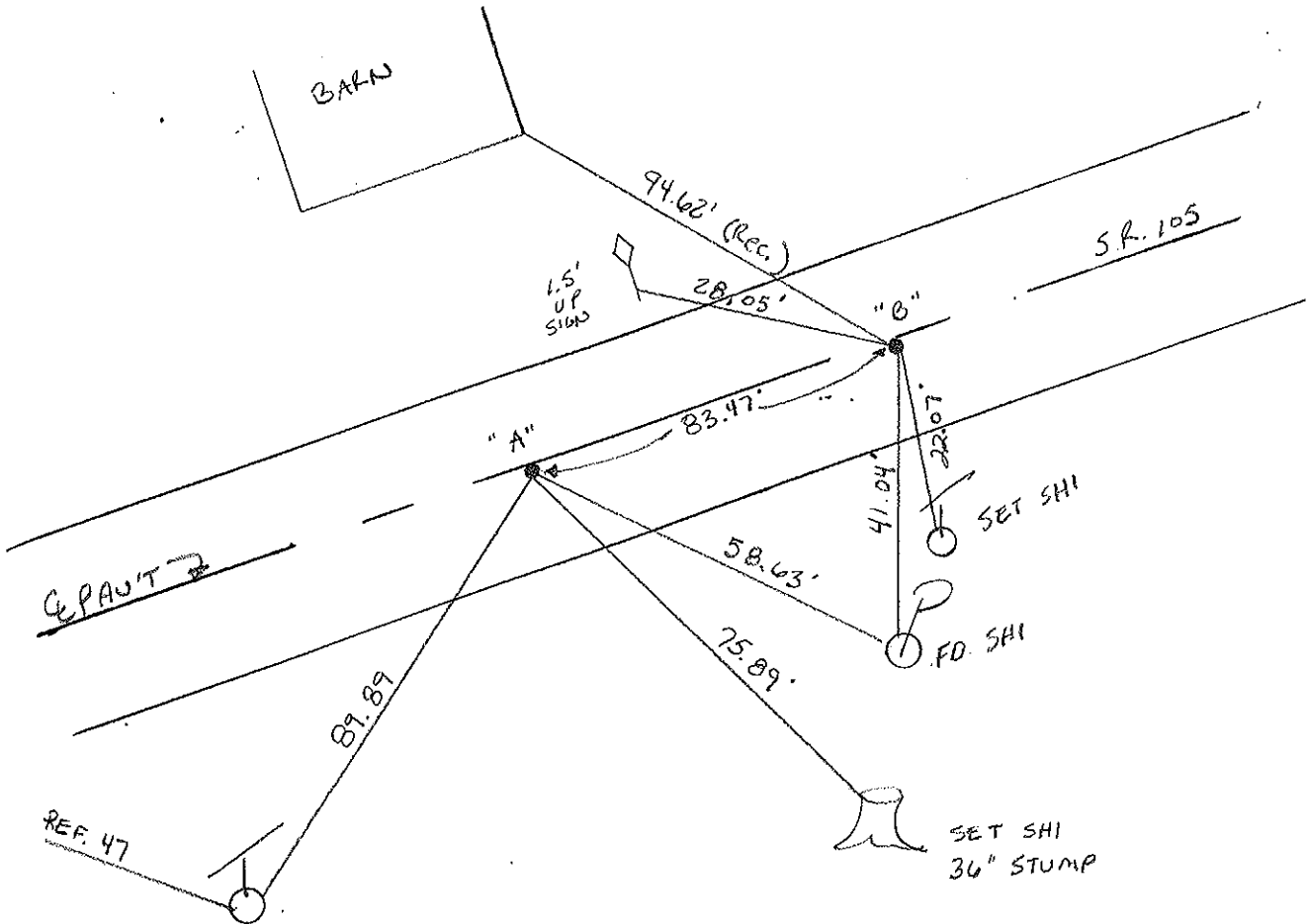
SECTION 8

T6 N R 14 E

TYPE MONUMENT A = RR SPIKE B = PK/WASHER  
 ON SURFACE - BELOW A = 1 1/2" BELOW B = SURFACE  
 LEFT - CL PAV'T. - RIGHT A = 0.4' RT B. 0.3' RT.  
10.0' TO RT EDGE PAVEMENT A & B  
 S.L.M. A. 224+59 B. 225+42



RESET PK/WASHER  
6-21-00  
KPM



PERSONNEL TITLE PERSONNEL TITLE

COUNTY Ottawa DATE 2-27-74

S. R. 105 WEATHER cold-wind

SEC. 8 TEMP. 30°

DESCRIPTION Harris Twp

JOB NO.

LEFT

CENTER LINE

RIGHT

