

O.D.O.T. DISTRICT 2 SURVEY OFFICE (USE ONLY)

PERSONNEL

REFERENCE NO. 50 C

SHEET 25 OF 63

NOTES RHOADES

DATE 7/30/19

ROUTE SR 105

H.C. O'DONNELL

WEATHER PARTLY CLOUDY

COUNTY OTTAWA

R.C. MILLER

TEMP. 75°

TOWNSHIP HARRIS

DWG BY BALBAUGH

PID 92131

SECTION 8

T 6 N R 14 E

TYPE MONUMENT P.K./WASHER

ON SURFACE - ~~BELOW~~ ON

OFFSET 0.3' ~~ET~~ : RT

9.9' TO RT EDGE PAVEMENT

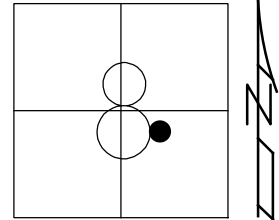
STATION: 239+73.29

HORIZ.DATUM: NAD83 2011

GEOID: 2012A

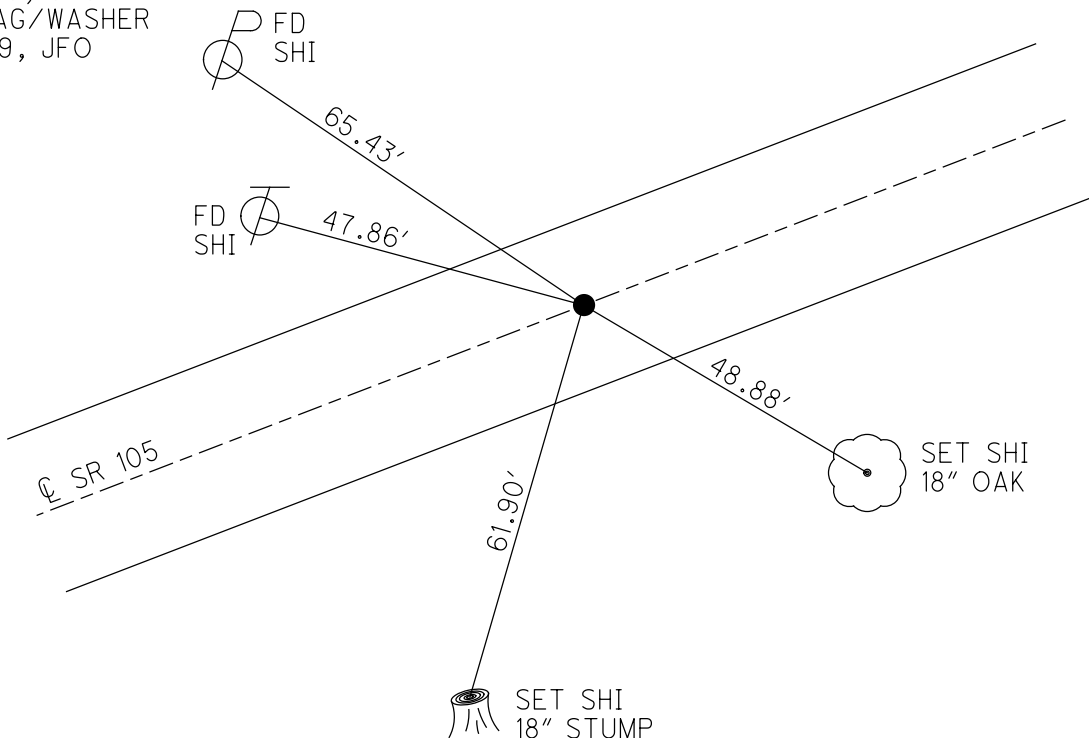
GRID: NORTHING: 666170.143

EASTING: 1758380.215



RECORD:

ORIGIN UNKNOWN
 POSSIBLE PROP. CORNER
 FD P.K./WASHER
 4/14/00, MC
 SET P.K./WASHER
 6/22/00, KPM
 FD P.K./WASHER
 REFC50
 4/18/18, JFO
 FD P.K./WASHER
 7/30/19, JFO
 SET MAG/WASHER
 11/18/19, JFO



O.D.O.T. DISTRICT 2 SURVEY OFFICE

PERSONNEL

REFERENCE NO. 50-C

SHEET 21 OF 96

NOTES K. MOSER

H.C. M. CANTERBURY

R.C. M. BARNHISEL

DATE 4-14-00

WEATHER SUNNY

TEMP. +60°F

ROUTE S.R. 105

COUNTY OTTAWA

TOWNSHIP HARRIS

SECTION B

T6 N R 14 E

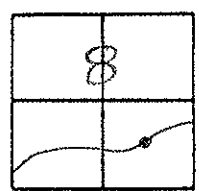
TYPE MONUMENT PK / WASHER

ON SURFACE - BELOW 1 1/2" BELOW

LEFT - Q PAV'T. - RIGHT 0.3' RT.

9.9' TO RT. EDGE PAVEMENT

S.L.M. 240+33



ORIGON UNKNOWN
POSSIBLE PROP. CORNER

RESET PK / WASHER
6-22-00
KPM

