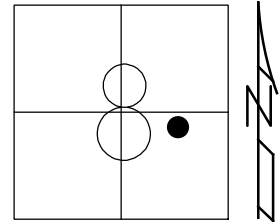


O.D.O.T. DISTRICT 2 SURVEY OFFICE (USE ONLY)

PERSONNEL _____ REFERENCE NO. 51 SHEET 28 OF 63
 NOTES RHOADES DATE 7/30/19 ROUTE SR 105
 H.C. O'DONNELL WEATHER PARTLY CLOUDY COUNTY OTTAWA
 R.C. MILLER TEMP. 75° TOWNSHIP HARRIS
 _____ SECTION 8
 DWG BY BALBAUGH PID 92131 T 6 N R 14 E

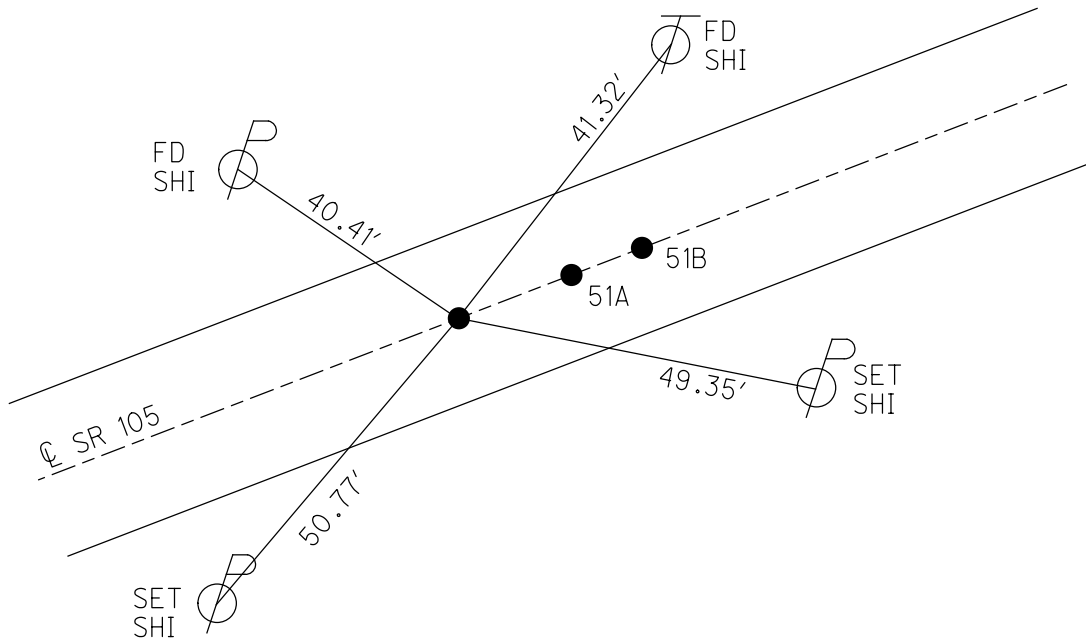
TYPE MONUMENT P.K.NAIL
 ON SURFACE - ~~BELOW~~ ON
 OFFSET Q PAVEMENT ON ~~LT~~ : ~~RT~~
9.8' TO RT EDGE PAVEMENT
 STATION: 246+08.17

HORZ.DATUM: NAD83 2011 GEOID: 2012A
 GRID: NORTHING: 666427.187 EASTING: 1758960.724



RECORD:
 FD LG.R.R.SPIKE
 4/14/00, MC
 SET P.K./WASHER
 6/22/00, KPM
 FD P.K.NAIL
 REF51
 4/19/18, JFO
 FD P.K.NAIL
 7/30/19, JFO
 SET MAG/WASHER
 11/18/19

DIST.
 51-51A= 12.03'
 51A-51B= 7.00'



O.D.O.T. DISTRICT 2 SURVEY OFFICE

PERSONNEL

REFERENCE NO. 51

SHEET 24 OF 96

NOTES K. MOSER

H.C. M. CANTERBURY

R.C. M. BARNHISEL

DATE 4-14-00

WEATHER SUNNY

TEMP. +60°F

ROUTE S.R. 105

COUNTY OTTAWA

TOWNSHIP HARRIS

SECTION B

T 6 N R 14 E

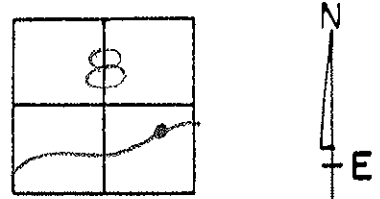
TYPE MONUMENT A = 26 R.R. SPIKE B + C = PK NAILS

ON SURFACE - BELOW SURFACE

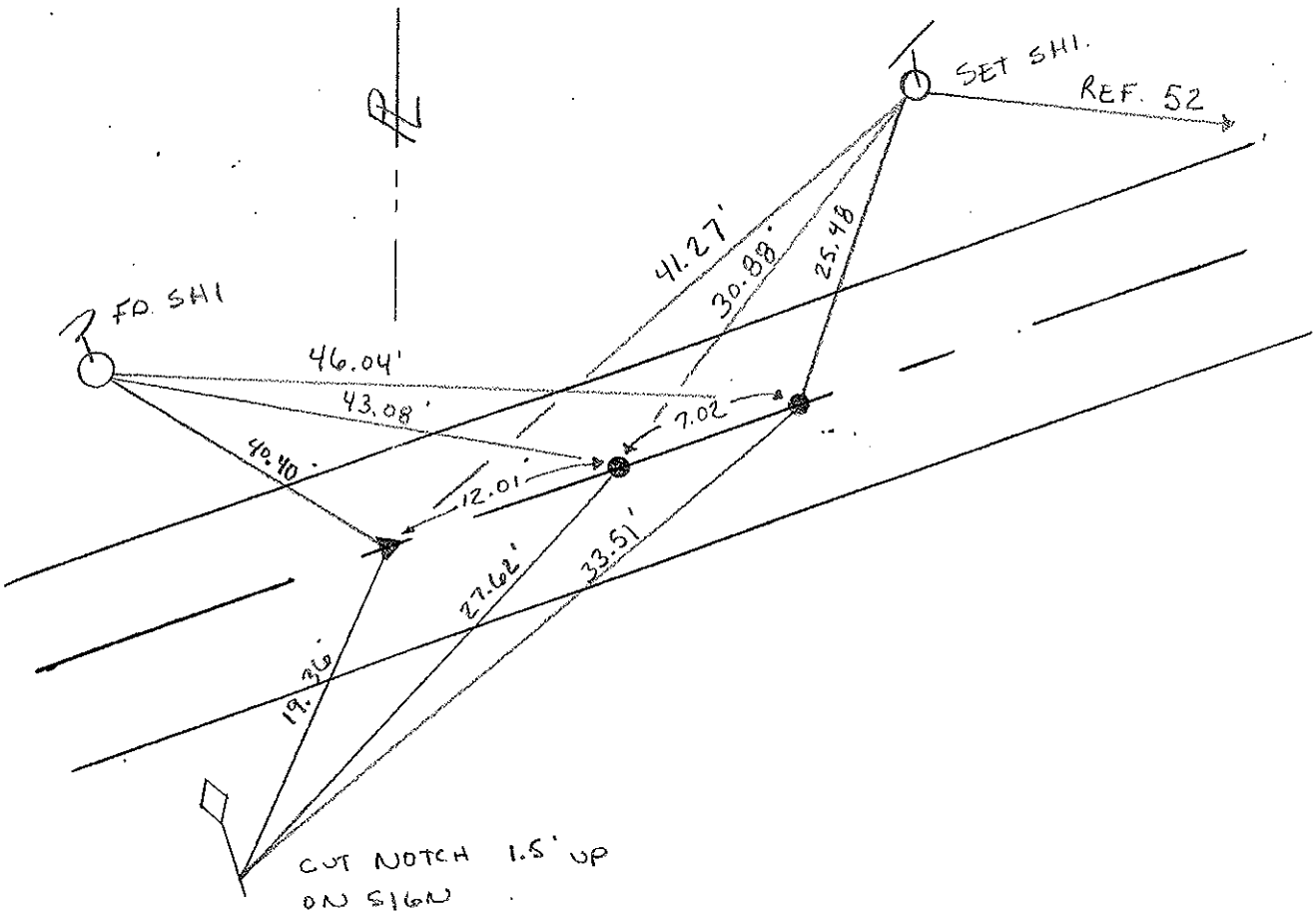
LEFT - PAV'T. - RIGHT PAV'T

9.8' TO RT EDGE PAVEMENT A, B, + C

S.L.M. A = 246 + 70 B = 246 + 82 C = 246 + 89



RESET PK/WASHERS
6-22-00
KPM



PERSONNEL TITLE PERSONNEL TITLE

COUNTY Ottawa DATE 2-27-74

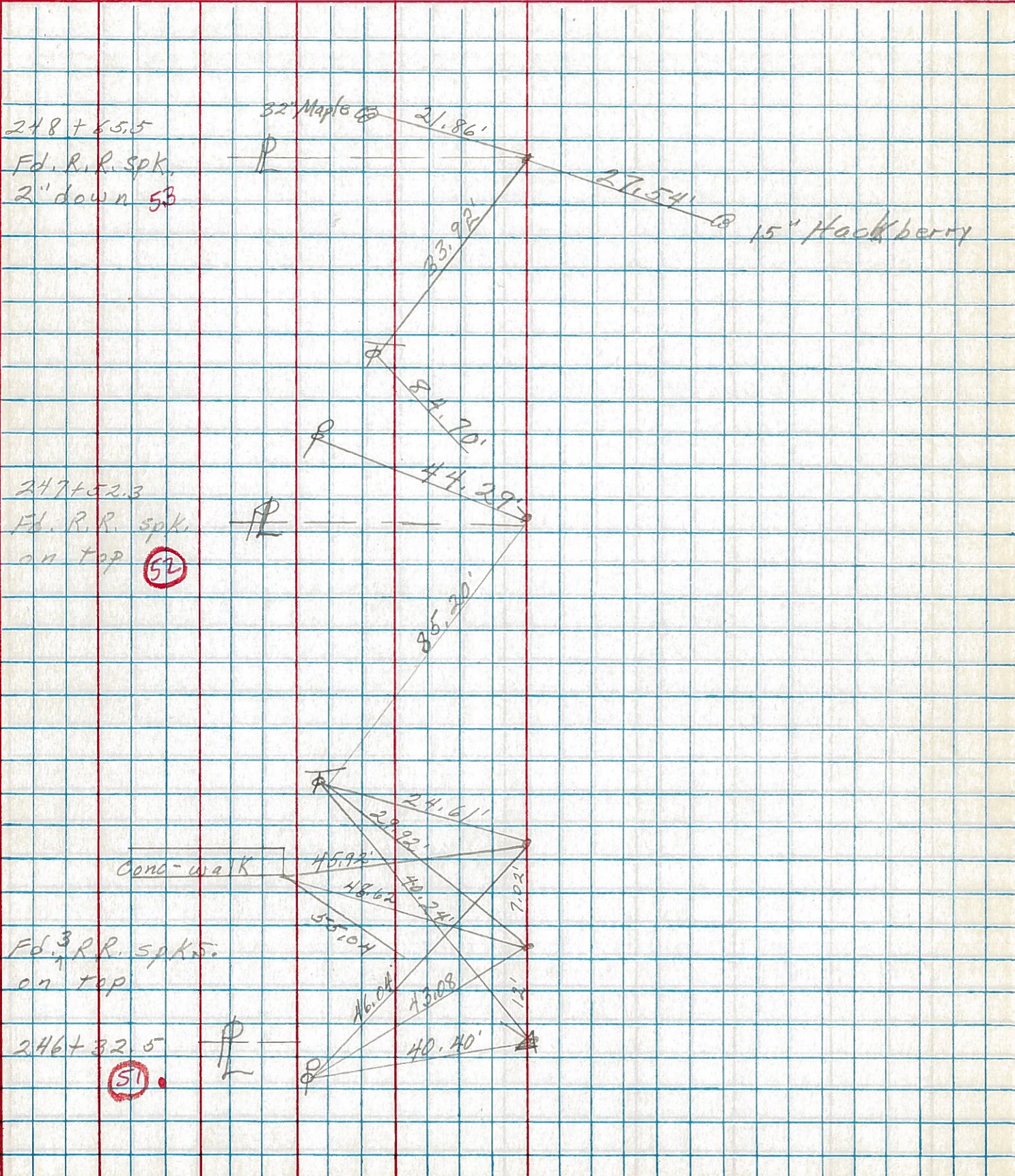
S. R. 105 WEATHER windy

SEC. 8 TEMP. 40°

DESCRIPTION Harris Twp.

JOB NO.

LEFT CENTER LINE RIGHT



248 + 65.5
Fd. R.R. spk.
2" down 53

247 + 52.3
Fd. R.R. spk.
on top 52

Fd. R.R. spk.
on top

246 + 32.5
51