

O.D.O.T. DISTRICT 2 SURVEY OFFICE (USE ONLY)

PERSONNEL

REFERENCE NO. 51 A

SHEET 29 OF 63

NOTES RHOADES

DATE 4/14/00

ROUTE SR 105

H.C. O'DONNELL

WEATHER PARLTY CLOUDY

COUNTY OTTAWA

R.C. MILLER

TEMP. 75°

TOWNSHIP HARRIS

SECTION 8

DWG BY BALBAUGH

PID 92131

T 6 N R 14 E

TYPE MONUMENT P.K.NAIL

ON SURFACE - ~~BELOW~~ ON

OFFSET Q PAVEMENT ON RT : RT

9.8' TO RT EDGE PAVEMENT

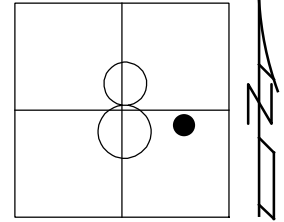
STATION: 246+20.16

HORZ.DATUM: NAD83 2011

GEOID: 2012A

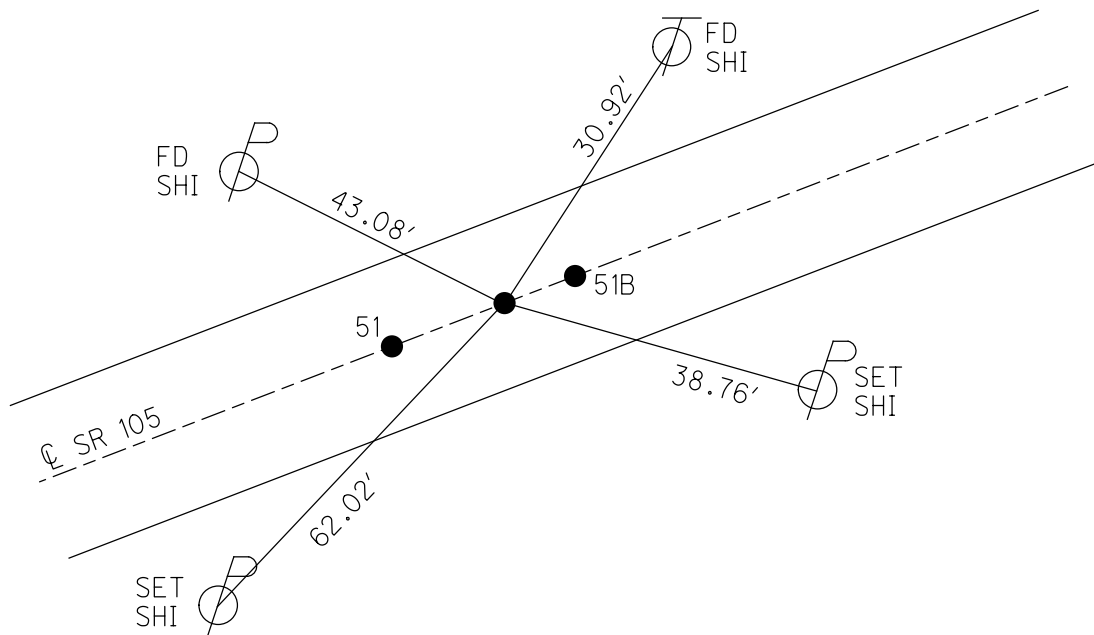
GRID: NORTHING: 666432.191

EASTING: 1758971.627



RECORD:
 P.K.NAIL
 4/14/00, MC
 SET P.K./WASHER
 6/22/00, KPM
 FD P.K.NAIL
 REFA51
 4/19/18, JFO
 FD P.K.NAIL
 7/30/19, JFO
 SET MAG/WASHER
 11/18/19

DIST.
 51-51A= 12.03'
 51A-51B= 7.00'



O.D.O.T. DISTRICT 2 SURVEY OFFICE

PERSONNEL

REFERENCE NO. 51

SHEET 24 OF 96

NOTES K. MOSER

H.C. M. CANTERBURY

R.C. M. BARNHISEL

DATE 4-14-00

WEATHER SUNNY

TEMP. +60°F

ROUTE S.R. 105

COUNTY OTTAWA

TOWNSHIP HARRIS

SECTION B

T 6 N R 14 E

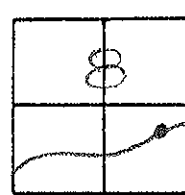
TYPE MONUMENT A = 26 R.R. SPIKE B + C = PK NAILS

ON SURFACE - BELOW SURFACE

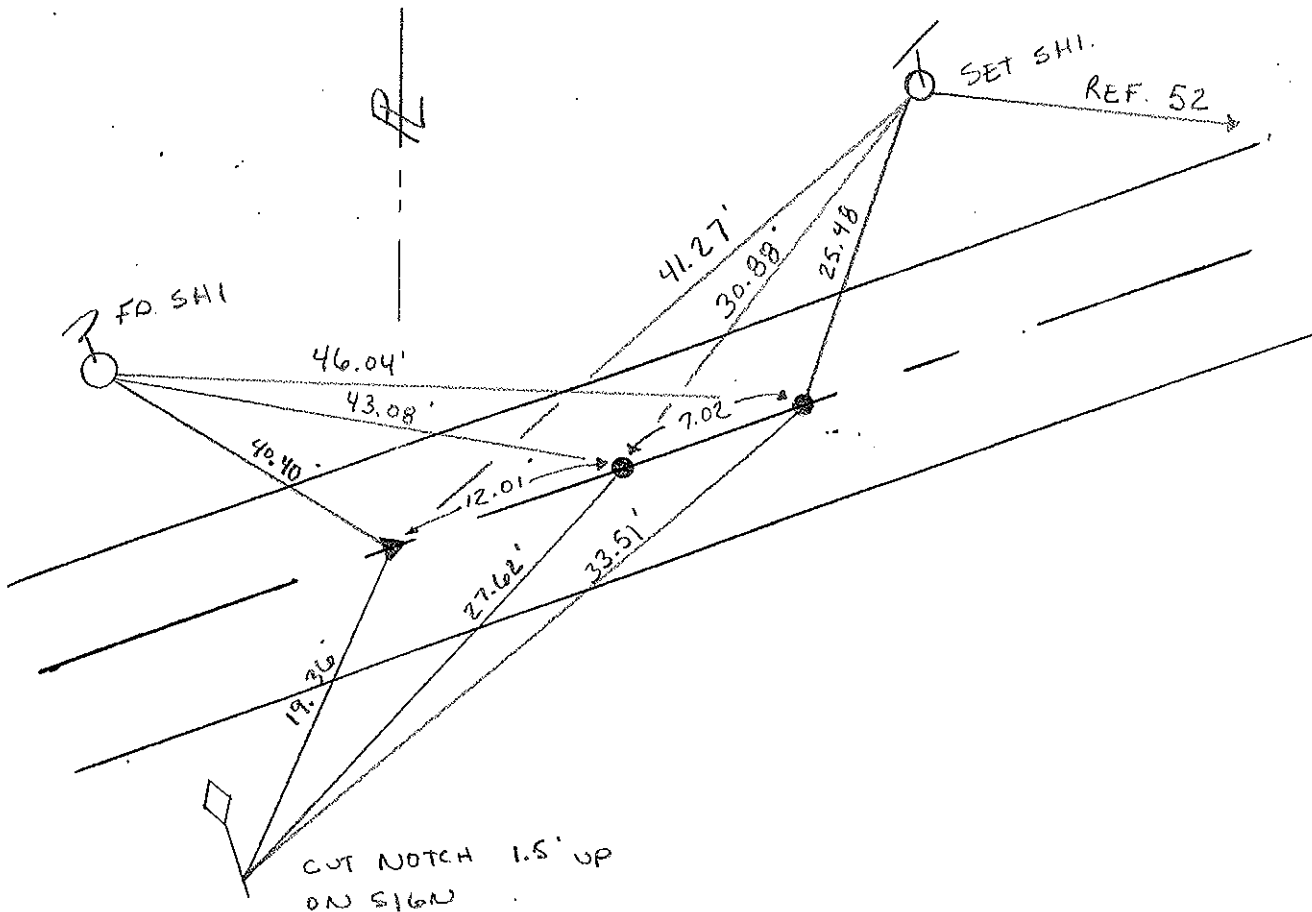
LEFT - PAV'T. - RIGHT PAV'T.

9.8' TO RT. EDGE PAVEMENT A, B, + C

S.L.M. A = 246 + 70 B = 246 + 82 C = 246 + 89



RESET PK/WASHERS
6-22-00
KPM



PERSONNEL TITLE PERSONNEL TITLE

COUNTY Ottawa DATE 2-27-74

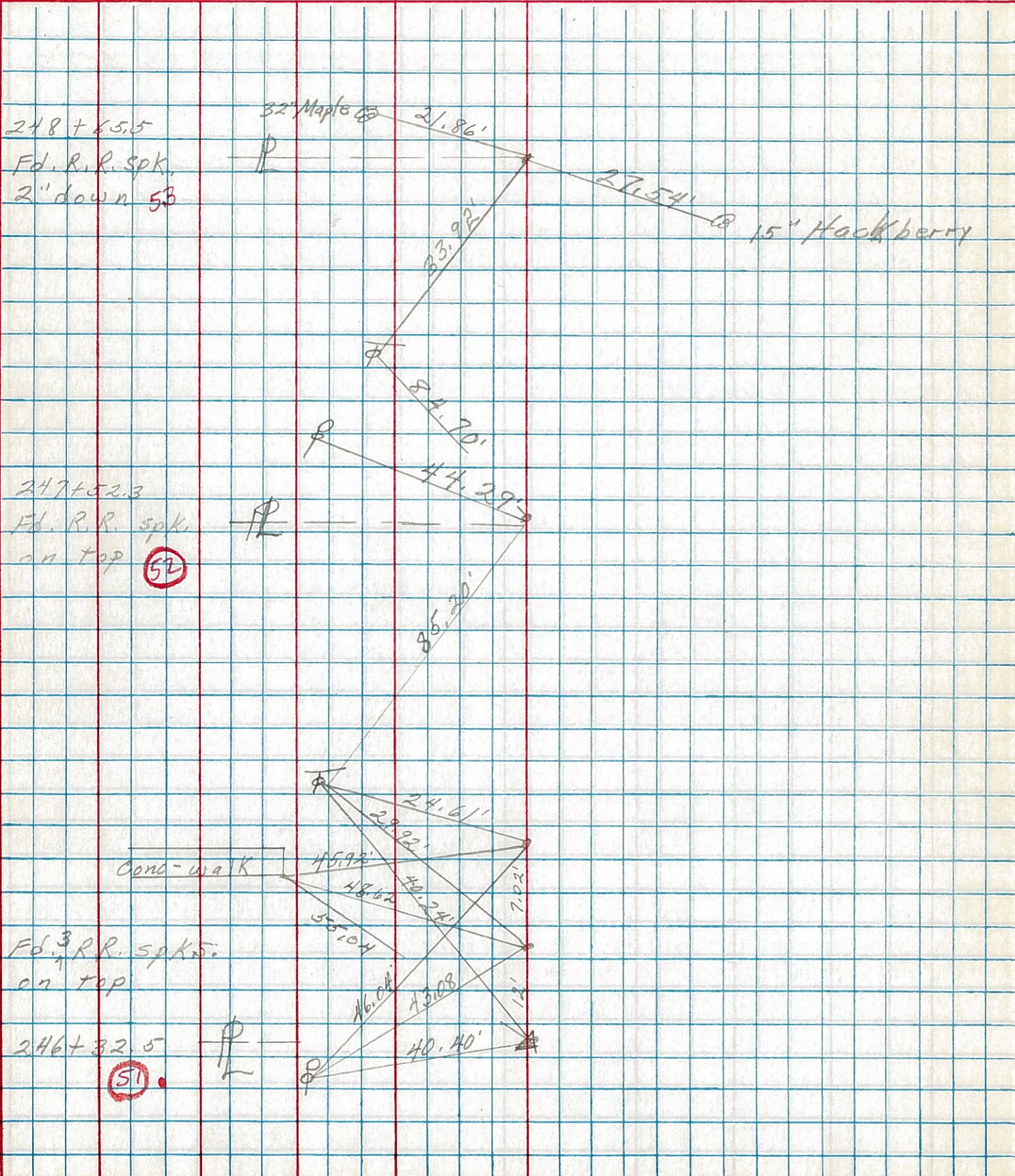
S. R. 105 WEATHER windy

SEC. 8 TEMP. 40°

DESCRIPTION Harris Twp.

JOB NO.

LEFT CENTER LINE RIGHT



248 + 65.5
Fd. R.R. spk.
2" down 53

247 + 52.3
Fd. R.R. spk.
on top 52

Fd. R.R. spk.
on top

246 + 32.5
51

Cond-walk

32' Maple

15' Hackberry