

O.D.O.T. DISTRICT 2 SURVEY OFFICE (USE ONLY)

PERSONNEL

REFERENCE NO. 52

SHEET 31 OF 63

NOTES RHOADES

DATE 7/30/19

ROUTE SR 105

H.C. O'DONNELL

WEATHER PARTLY CLOUDY

COUNTY OTTAWA

R.C. MILLER

TEMP. 75°

TOWNSHIP HARRIS

SECTION 8

DWG BY BALBAUGH

PID 92131

T 6 N R 14 E

TYPE MONUMENT P.K.NAIL

ON SURFACE - ~~BELOW~~ ON

OFFSET \varnothing PAVEMENT 0.7' LT : ~~RT~~

9.9' TO LT EDGE PAVEMENT

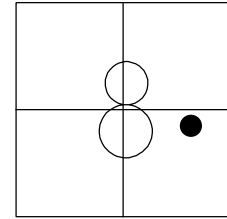
STATION: 247+28.14

HORZ.DATUM: NAD83 2011

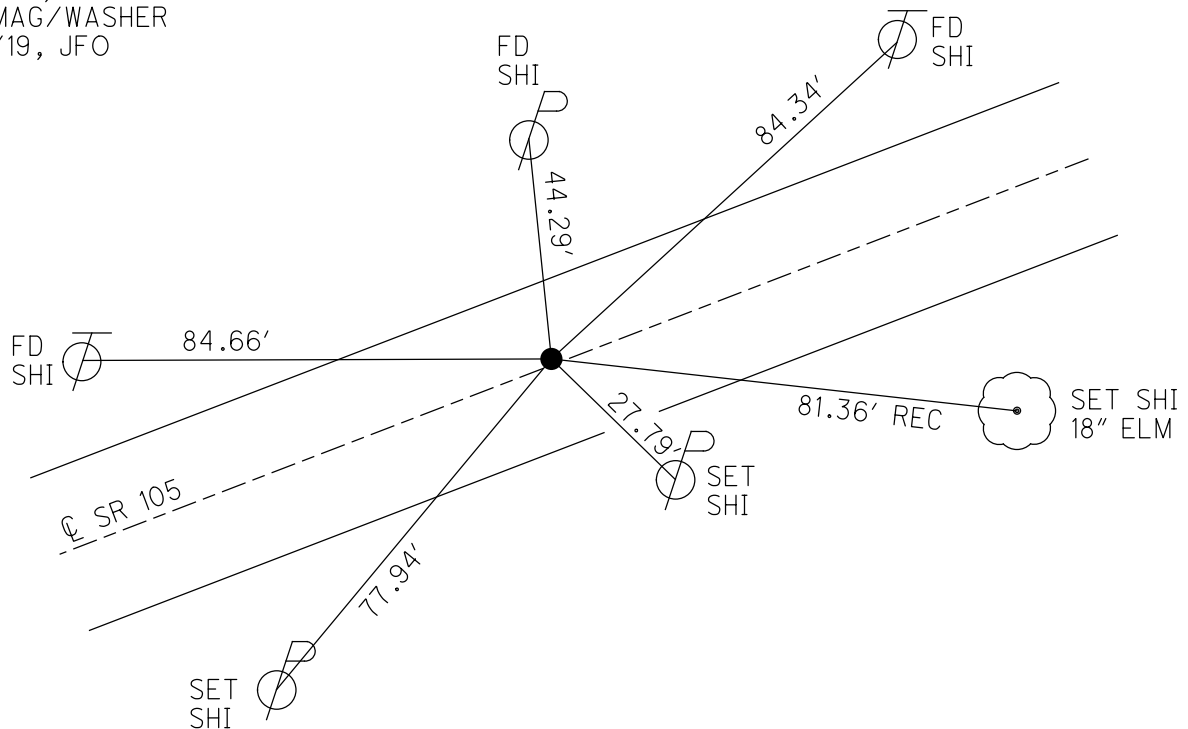
GEOID: 2012A

GRID: NORTHING: 666476.889

EASTING: 1759069.923



RECORD:
 FD P.K./WASHER
 4/14/00, MC
 SET P.K./WASHER
 6/22/00, KPM
 FD P.K.NAIL
 REF52
 4/19/18, JFO
 FD P.K.NAIL
 7/30/19, JFO
 SET MAG/WASHER
 11/18/19, JFO



O.D.O.T. DISTRICT 2 SURVEY OFFICE

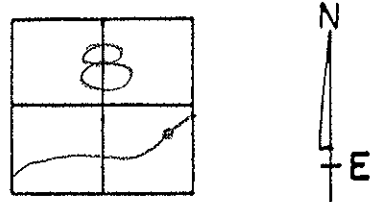
PERSONNEL

NOTES K. MOSER
 H.C. M. CANTERBURY
 R.C. M. BARNHISEL

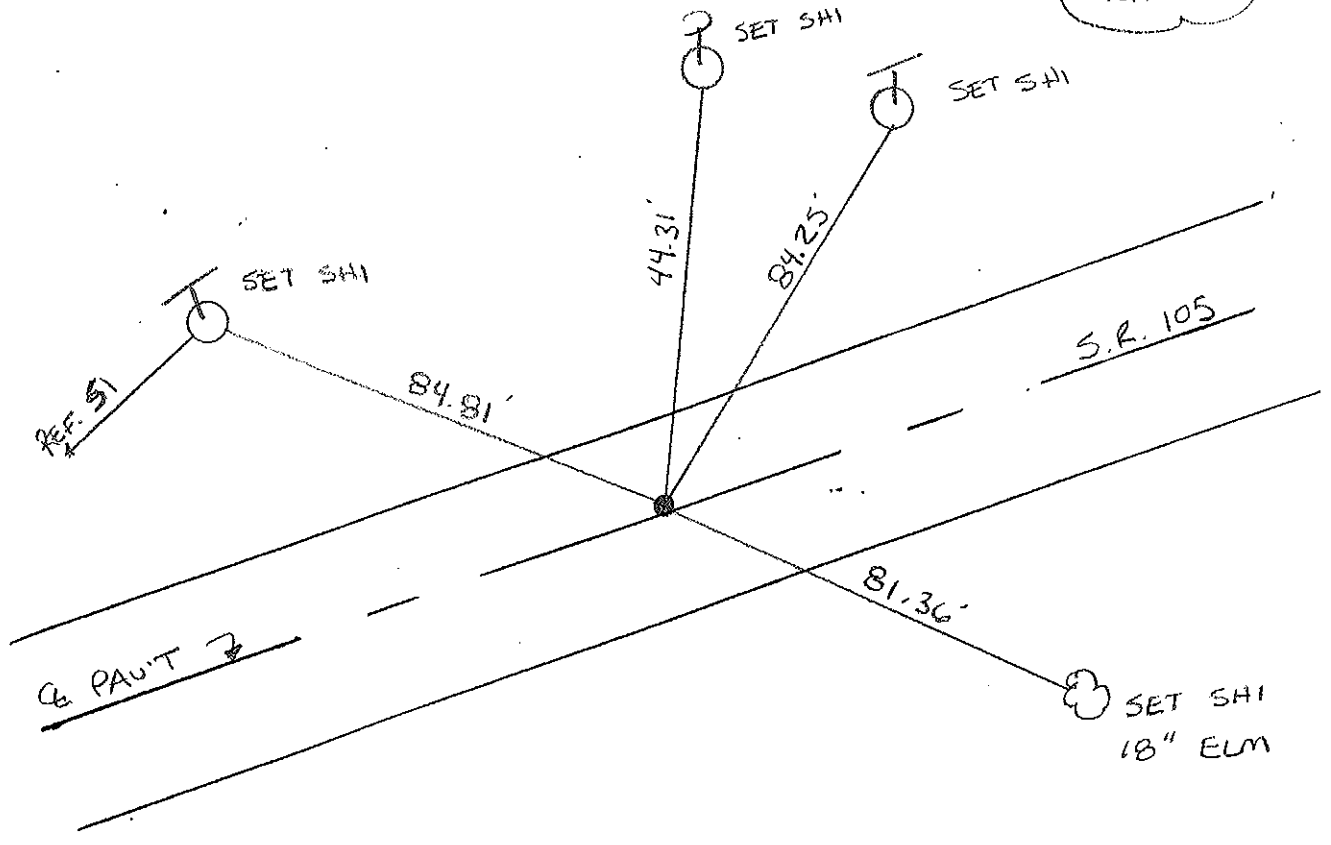
REFERENCE NO. 52
 (#53 D.N.F.)
 DATE 4-14-00
 WEATHER SUNNY
 TEMP. +60°F

SHEET 25 OF 96
 ROUTE S.R. 105
 COUNTY OTTAWA
 TOWNSHIP HARRIS
 SECTION B
T6 N R 14 E

TYPE MONUMENT PK /WASHER
 ON SURFACE - ~~BELOW~~ SURFACE
 LEFT - ~~C PAV'T.~~ RIGHT 0.7' LT
9.9 TO LT. EDGE PAVEMENT
 S.L.M. 247 + 90



RESET PK/WASHER
 6-22-00
 KPM



PERSONNEL TITLE PERSONNEL TITLE

COUNTY Ottawa DATE 2-27-74

S. R. 105 WEATHER windy

SEC. 8 TEMP. 40°

DESCRIPTION Harris Twp.

JOB NO.

LEFT CENTER LINE RIGHT

