

O.D.O.T. DISTRICT 2 SURVEY OFFICE (USE ONLY)

PERSONNEL _____ REFERENCE NO. 54 SHEET 33 OF 63
 NOTES RHOADES DATE 7/30/19 ROUTE SR 105
 H.C. O'DONNELL WEATHER PARTLY CLOUDY COUNTY OTTAWA
 R.C. MILLER TEMP. 75° TOWNSHIP HARRIS
 _____ SECTION 8
 DWG BY BALBAUGH PID 92131 T 6 N R 14 E

TYPE MONUMENT P.K.SHANK

ON SURFACE - ~~BELOW~~ ON _____

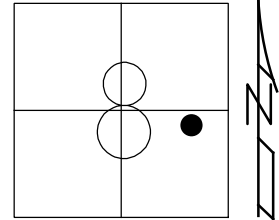
OFFSET 0.7' LT : ~~RT~~

9.3' TO LT EDGE PAVEMENT

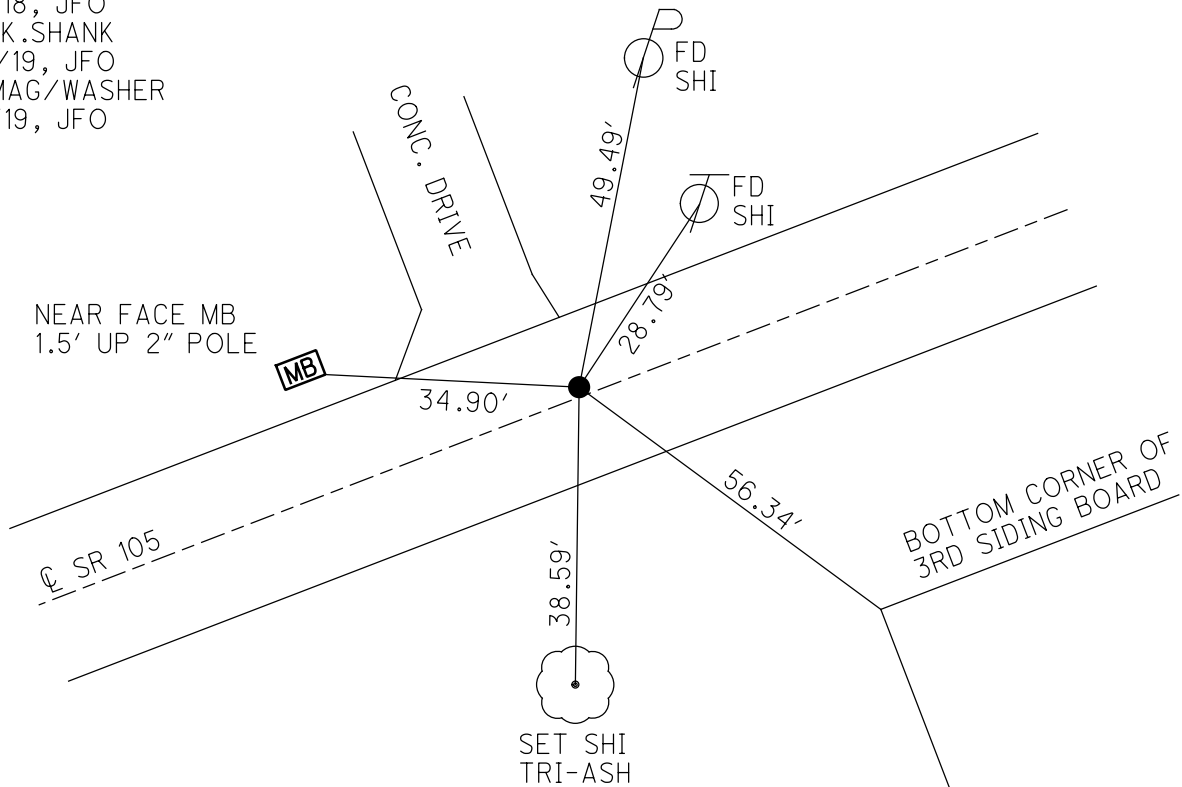
STATION: 249+16.19

HORIZ.DATUM: NAD83 2011 GEOID: 2012A

GRID: NORTHING: 666554.623 EASTING: 1759241.171



RECORD:
 FD BOAT SPIKE
 4/14/00, MC
 SET P.K./WASHER
 6/22/00, KPM
 FD SHANK
 REF54
 SET MAG/WASHER
 4/19/18, JFO
 FD P.K.SHANK
 7/30/19, JFO
 SET MAG/WASHER
 11/18/19, JFO



O.D.O.T. DISTRICT 2 SURVEY OFFICE

PERSONNEL

REFERENCE NO. 54

SHEET 26 OF 96

NOTES K. MOSER

H.C. M. CANTERBURY

R.C. M. BARNHISEL

DATE 4-14-00

WEATHER SUNNY

TEMP. +60°F

ROUTE S.R. 105

COUNTY OTTAWA

TOWNSHIP HARRIS

SECTION B

T6 N R 14 E

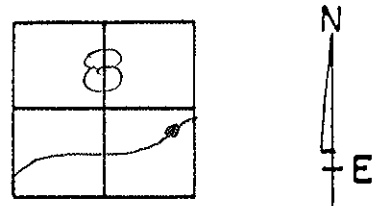
TYPE MONUMENT BOAT SPIKE

ON SURFACE - ~~BELOW~~ SURFACE

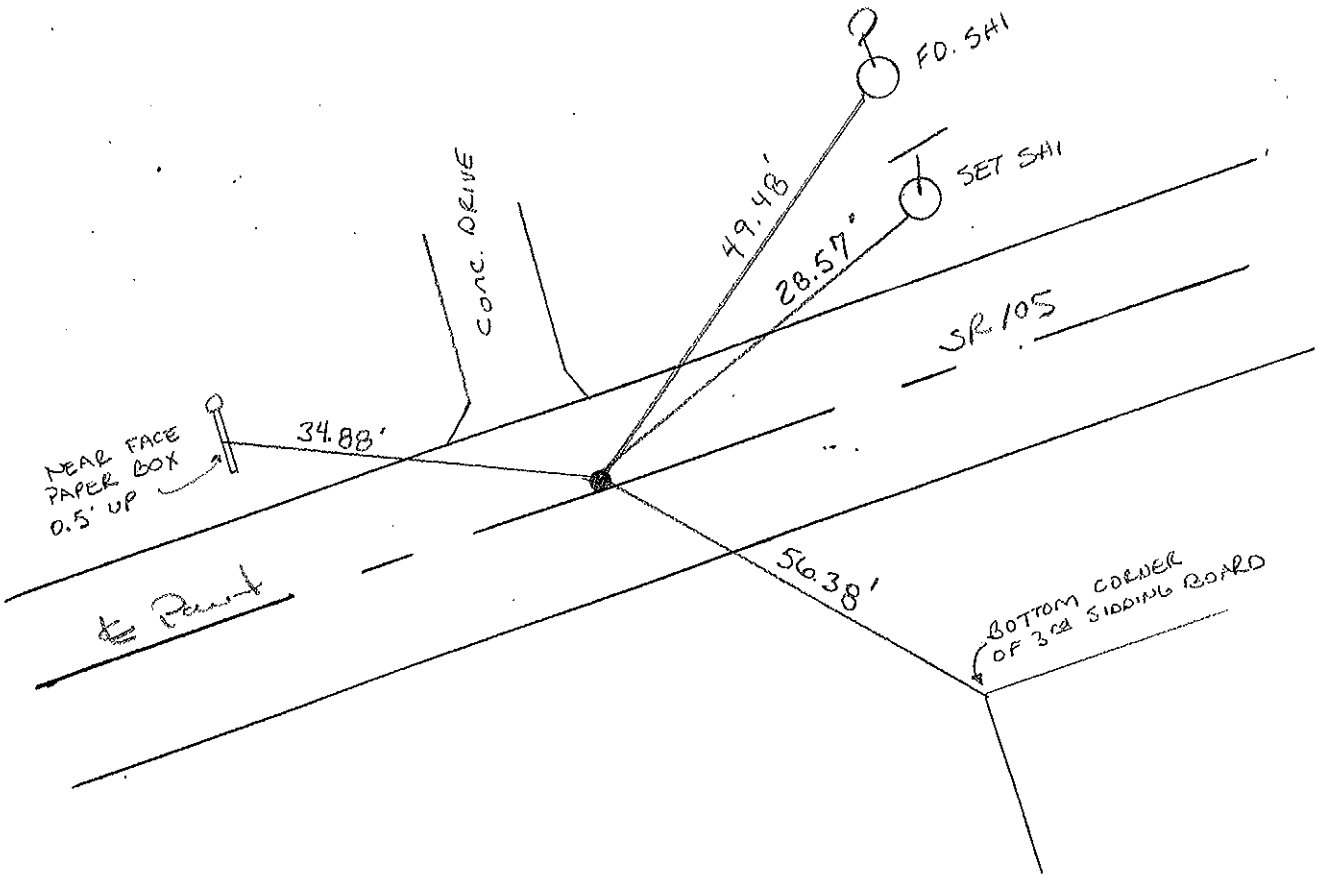
LEFT - ~~PAV'T.~~ RIGHT 0.7 LT.

9.3 TO LT. EDGE PAVEMENT

S.L.M. 249 + 78



RESET PK/WASHER
6-22-00
KPM



PERSONNEL TITLE PERSONNEL TITLE

COUNTY Ottawa

DATE 3-6-74

S. R. 105

WEATHER cloudy

SEC. 8

TEMP. 40°

DESCRIPTION Harris Twp

LEFT

CENTER LINE

RIGHT

JOB NO.

