

O.D.O.T. DISTRICT 2 SURVEY OFFICE (USE ONLY)

PERSONNEL

REFERENCE NO. 55

SHEET 34 OF 63

NOTES RHOADES

DATE 7/30/19

ROUTE SR 105

H.C. O'DONNELL

WEATHER PARTLY CLOUDY

COUNTY OTTAWA

R.C. MILLER

TEMP. 75°

TOWNSHIP HARRIS

DWG BY BALBAUGH PID 92131

SECTION 8

T 6 N R 14 E

TYPE MONUMENT P.K./WASHER

ON SURFACE - BELOW ON

OFFSET \varnothing PAVEMENT ON RT : RT

9.7' TO RT EDGE PAVEMENT

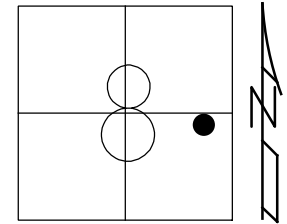
STATION: 250+45.42

HORZ.DATUM: NAD83 2011

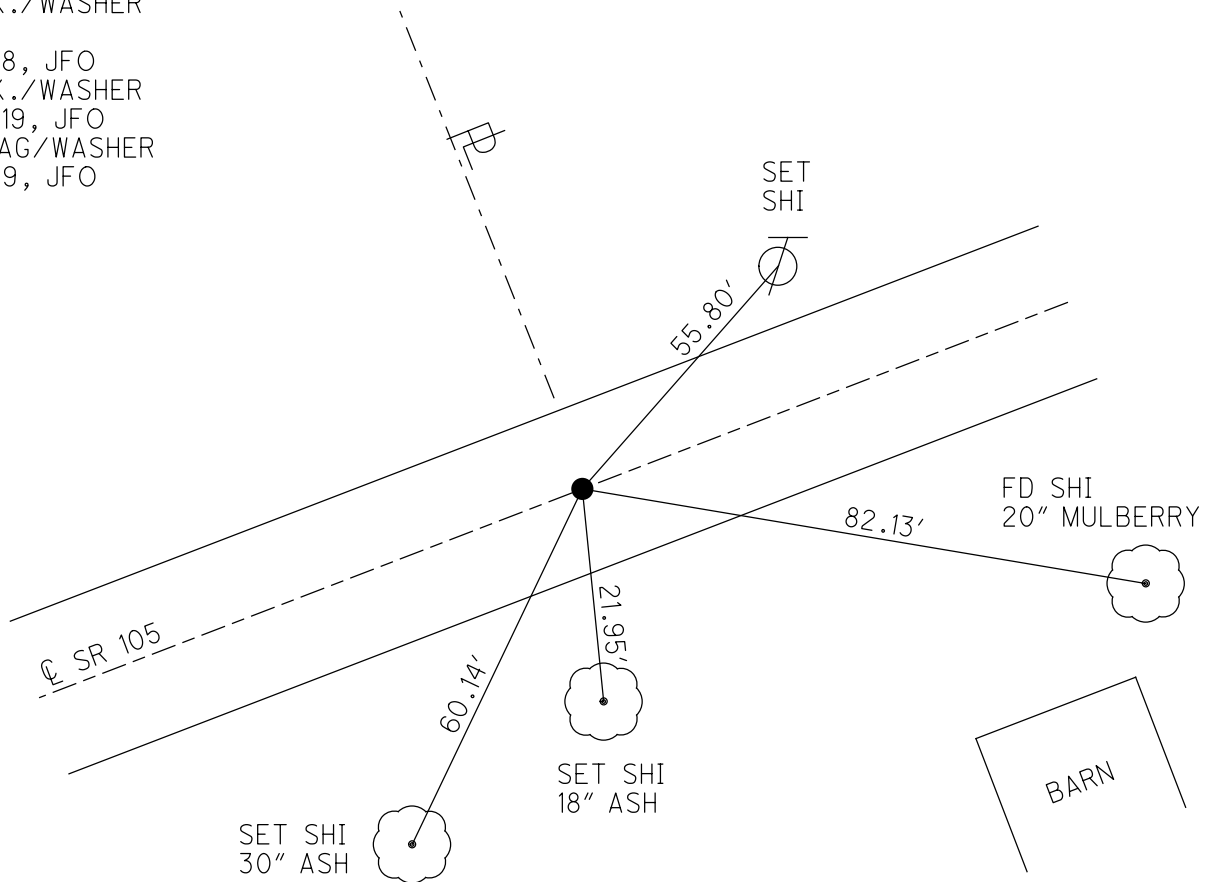
GEOID: 2012A

GRID: NORTHING: 666608.281

EASTING: 1759358.715



RECORD:
 FD BOAT SPIKE
 4/14/00, MC
 SET P.K./WASHER
 6/22/00, KPM
 FD P.K./WASHER
 REF55
 4/19/18, JFO
 FD P.K./WASHER
 7/30/19, JFO
 SET MAG/WASHER
 11/18/19, JFO



O.D.O.T. DISTRICT 2 SURVEY OFFICE

PERSONNEL

REFERENCE NO. 55

SHEET 27 OF 96

NOTES K. MOSER

H.C. M. CANTERBURY

R.C. M. BARNHISEL

DATE 4-14-00

WEATHER SUNNY

TEMP. +60°F

ROUTE S.R. 105

COUNTY OTTAWA

TOWNSHIP HARRIS

SECTION B

T 6 N R 14 E

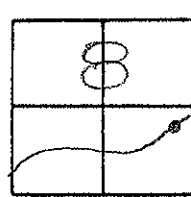
TYPE MONUMENT BOAT SPIKE

ON SURFACE - ~~BELOW~~ SURFACE

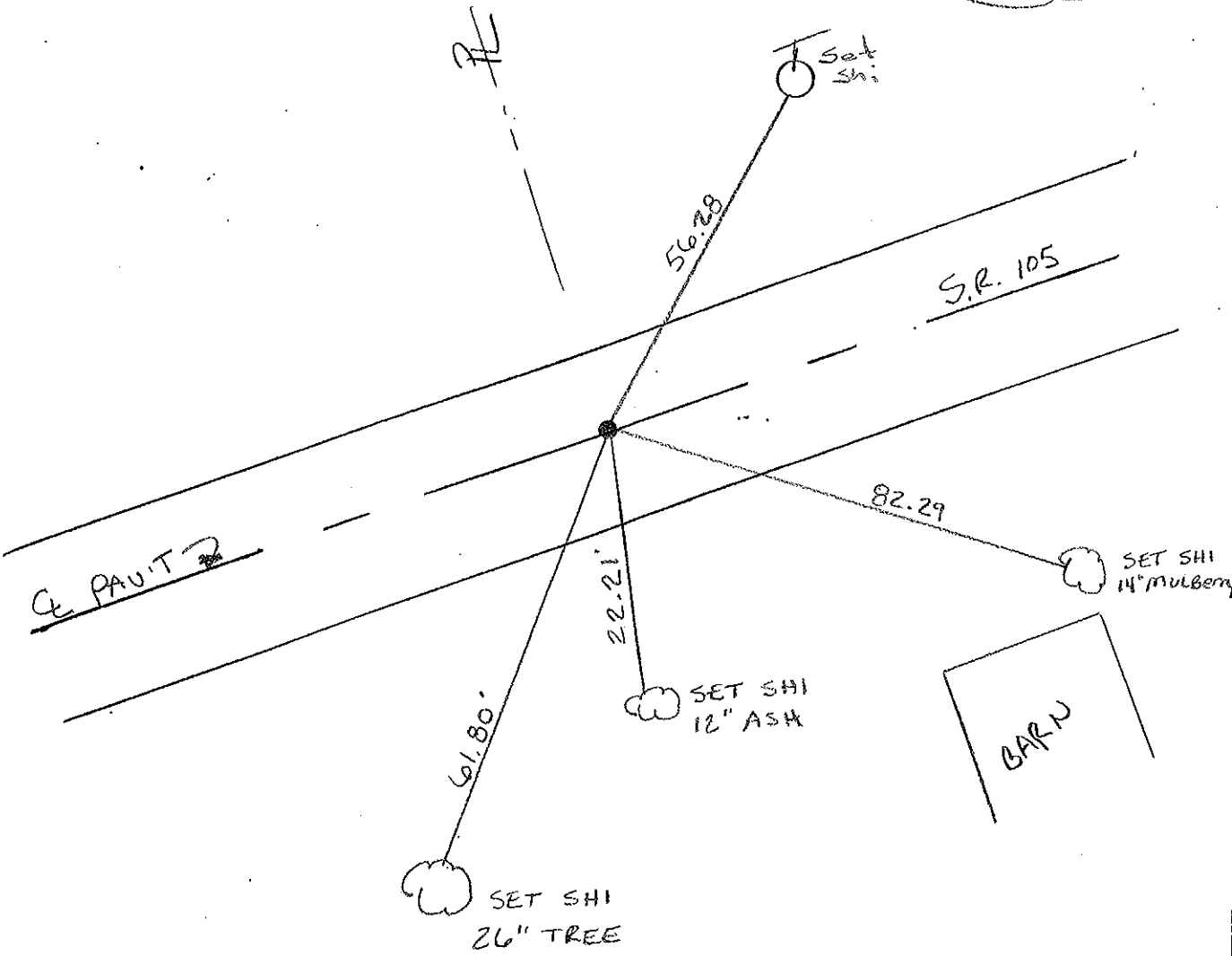
~~LEFT~~ - & PAV'T. - RIGHT & PAV'T

9.7' TO RT. EDGE PAVEMENT

S.L.M. 251 + 08



RESET PK/WASHER
6-22-00
KPM



O.D.O.T. DISTRICT 2 SURVEY OFFICE

PERSONNEL

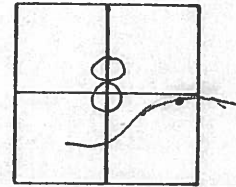
REFERENCE NO. 55 SHEET OF

NOTES Cronin
H.C. Ripple
R.C. Barbour
Geyman

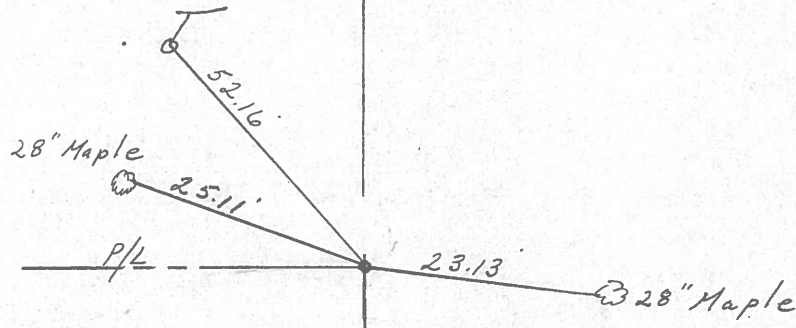
DATE 5/25/88
WEATHER sunny-windy
TEMP. 48°

ROUTE #105
COUNTY Ottawa
TOWNSHIP Harris
SECTION #8
T 6 N R 14 E

TYPE MONUMENT boat spike
ON SURFACE - BELOW 1 1/2"
LEFT - C PAV'T. - RIGHT
TO EDGE PAVEMENT
S.L.M. 250 + 69.5



R.R. spike below
boat spike



S.R. # 105

PERSONNEL TITLE PERSONNEL TITLE

COUNTY Ottawa DATE 3-6-74

S. R. 105 WEATHER Cloudy

SEC. 8 TEMP. 40°

DESCRIPTION Harris Twp LEFT CENTER LINE RIGHT JOB NO.

