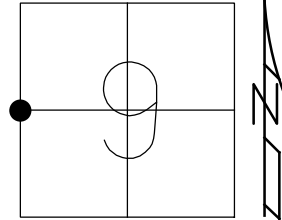


O.D.O.T. DISTRICT 2 SURVEY OFFICE (USE ONLY)

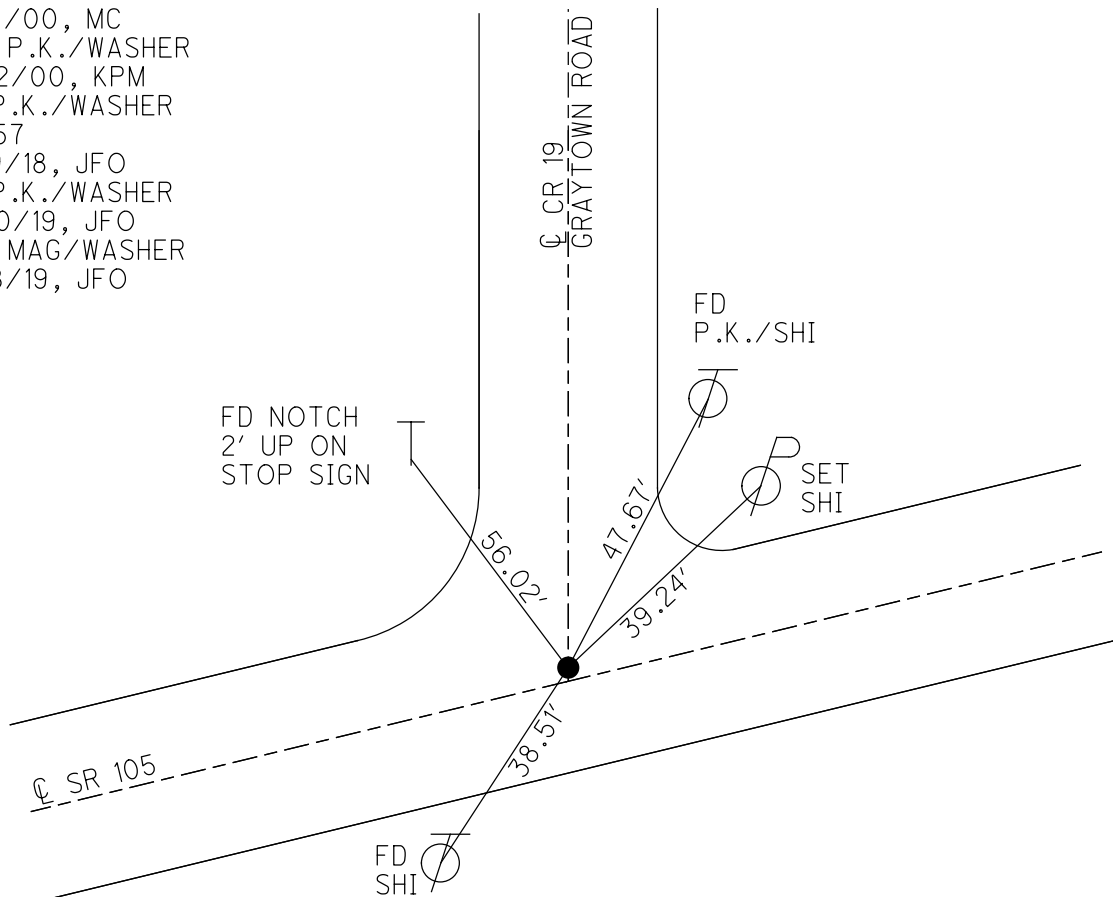
PERSONNEL _____ REFERENCE NO. 57 SHEET 36 OF 63
 NOTES RHOADES DATE 7/30/19 ROUTE SR 105
 H.C. O'DONNELL WEATHER PARTLY CLOUDY COUNTY OTTAWA
 R.C. MILLER TEMP. 75° TOWNSHIP HARRIS
 DWG BY BALBAUGH PID 92131 SECTION 9
 T 6 N R 14 E

TYPE MONUMENT P.K./WASHER
 ON SURFACE - ~~BELOW~~ ON
 OFFSET C PAVEMENT 1.0' LT : RT
11.3 TO RT EDGE PAVEMENT
 STATION: 259+24.80



HORZ.DATUM: NAD83 2011 GEOID: 2012A
 GRID: NORTHING: 666861.508 EASTING: 1760186.007

RECORD:
 FD P.K.NAIL
 4/14/00, MC
 SET P.K./WASHER
 6/22/00, KPM
 FD P.K./WASHER
 REF57
 4/19/18, JFO
 FD P.K./WASHER
 7/30/19, JFO
 SET MAG/WASHER
 11/18/19, JFO



O.D.O.T. DISTRICT 2 SURVEY OFFICE

PERSONNEL

REFERENCE NO. 57

SHEET 29 OF 96

NOTES K. MOSER

H.C. M. CANTERBURY

DATE 4-14-00

ROUTE S.R. 105

R.C. M. BARDHISEL

WEATHER Sunny

COUNTY OTTAWA

TEMP. +60°F

TOWNSHIP HARRIS

SECTION 9

T6 N R 14 E

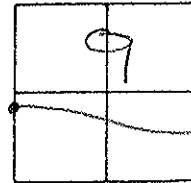
TYPE MONUMENT PK NAIL

ON SURFACE - BELOW 2" BELOW

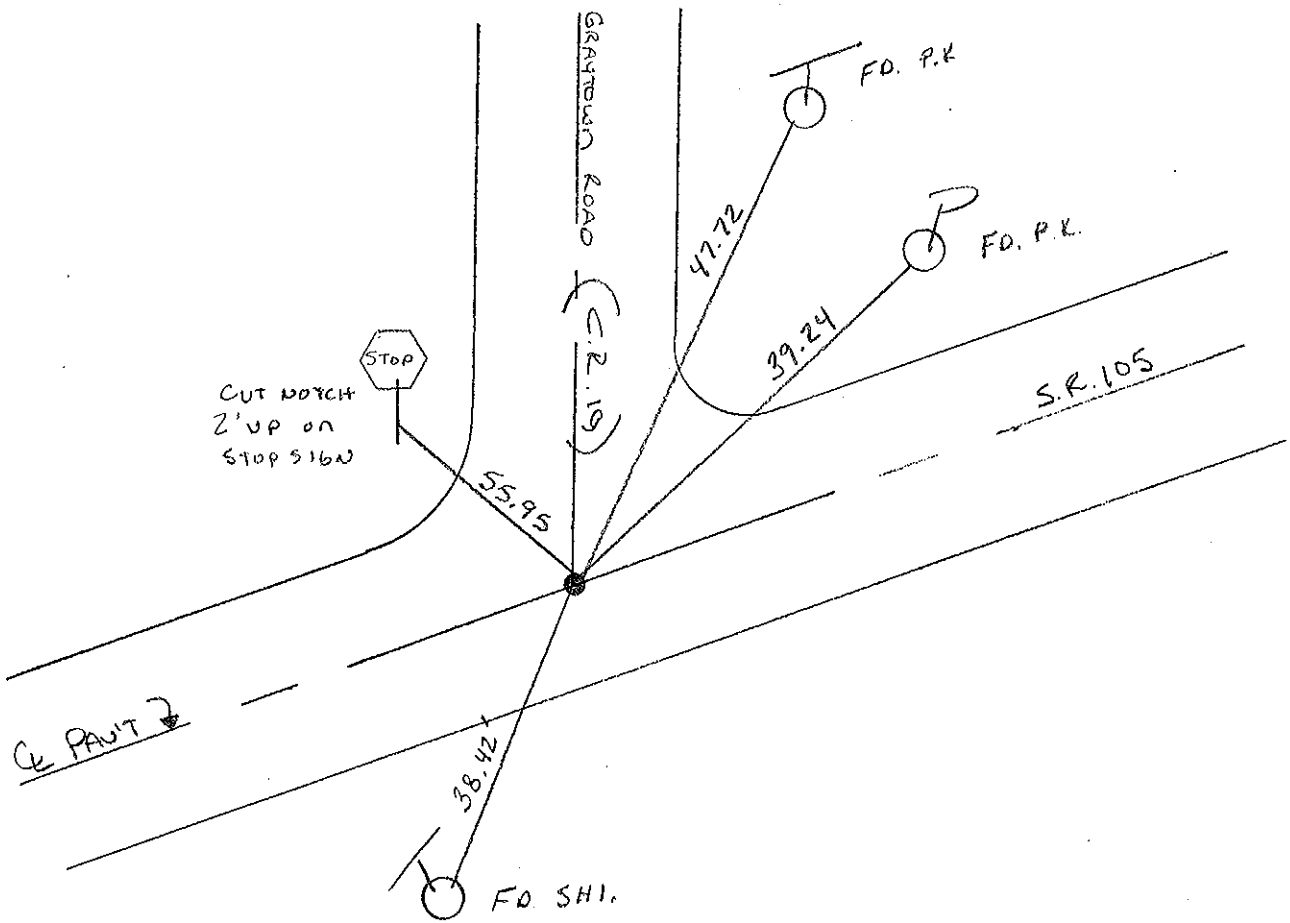
LEFT - C PAV'T. - RIGHT 1.0' LT

11.3 TO RT EDGE PAVEMENT

S.L.M. 259 + 88



RESET PK/WASHER
 6-22-00
 K.P.M



O.D.O.T. DISTRICT 2 SURVEY OFFICE

PERSONNEL

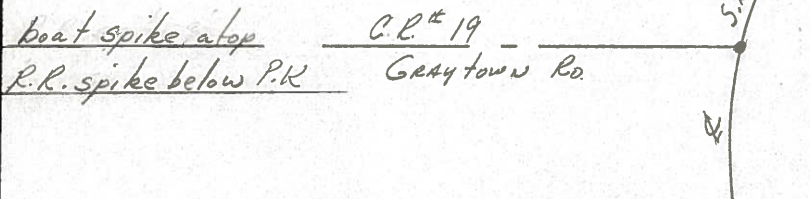
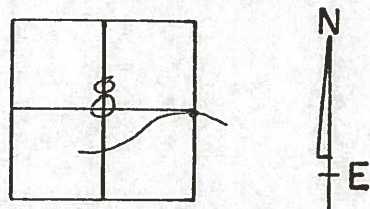
NOTES Cronin
H.C. Ripple
R.C. Barbour
Geyman

REFERENCE NO. 57
DRAW 5/25/88
DATE 5/26/87
WEATHER sunny
TEMP. 80°

SHEET _____ OF _____

ROUTE #105
COUNTY Ottawa
TOWNSHIP Harris
SECTION 8
T 6 N R 14 E

TYPE MONUMENT P.K. washer
ON SURFACE - BELOW _____
LEFT - C PAV'T. - RIGHT _____
_____ TO _____ EDGE PAVEMENT
S.L.M. 259 + 46 E



PERSONNEL	TITLE	PERSONNEL	TITLE	COUNTY	DATE	WEATHER	TEMP.
Schneider				Ottawa	3-6-74	Cloudy	45°
Mosser				S. R. 105			
Barbour				SEC. 9			

DESCRIPTION Harris Twp LEFT CENTER LINE RIGHT JOB NO.

