

O.D.O.T. DISTRICT 2 SURVEY OFFICE (USE ONLY)

PERSONNEL

REFERENCE NO. 58

SHEET 37 OF 63

NOTES RHOADES

DATE 7/30/19

ROUTE SR 105

H.C. O'DONNELL

WEATHER PARTLY CLOUDY

COUNTY OTTAWA

R.C. MILLER

TEMP. 75°

TOWNSHIP HARRIS

DWG BY BALBAUGH

PID 92131

SECTION 9

T 6 N R 14 E

TYPE MONUMENT P.K.NAIL

ON SURFACE - ~~BELOW~~ ON

OFFSET ☉ PAVEMENT 8.0' ~~LT~~ : RT

2.4' TO RT EDGE PAVEMENT

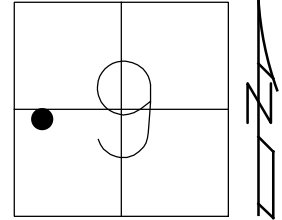
STATION: 265+29.46

HORZ.DATUM: NAD83 2011

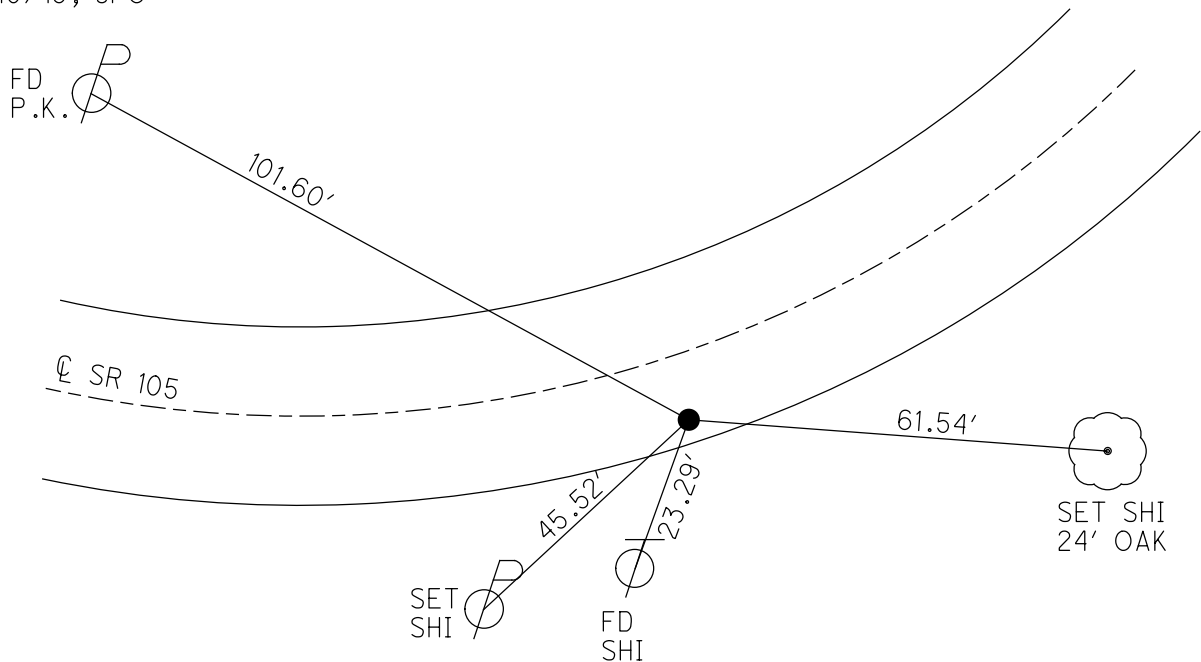
GEOID: 2012A

GRID: NORTHING: 666735.858

EASTING: 1760776.997



RECORD:  
FD P.K.NAIL  
4/14/00, MC  
SET P.K./WASHER  
6/22/00, KPM  
FD P.K.NAIL  
REF58  
4/19/18, JFO  
FD P.K.NAIL  
7/30/19, JFO  
SET MAG/WASHER  
12/10/19, JFO



# O.D.O.T. DISTRICT 2 SURVEY OFFICE

PERSONNEL

REFERENCE NO. 58

SHEET 30 OF 96

NOTES K. MOSER

H.C. M. CANTERBURY

DATE 4-14-00

ROUTE S.R. 105

R.C. M. BARNHISEL

WEATHER SUNNY

COUNTY OTTAWA

TEMP. +60°F

TOWNSHIP HARRIS

SECTION 9

T6 N R 14 E

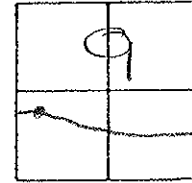
TYPE MONUMENT P.K. NAIL

ON SURFACE - ~~BELOW~~ SURFACE

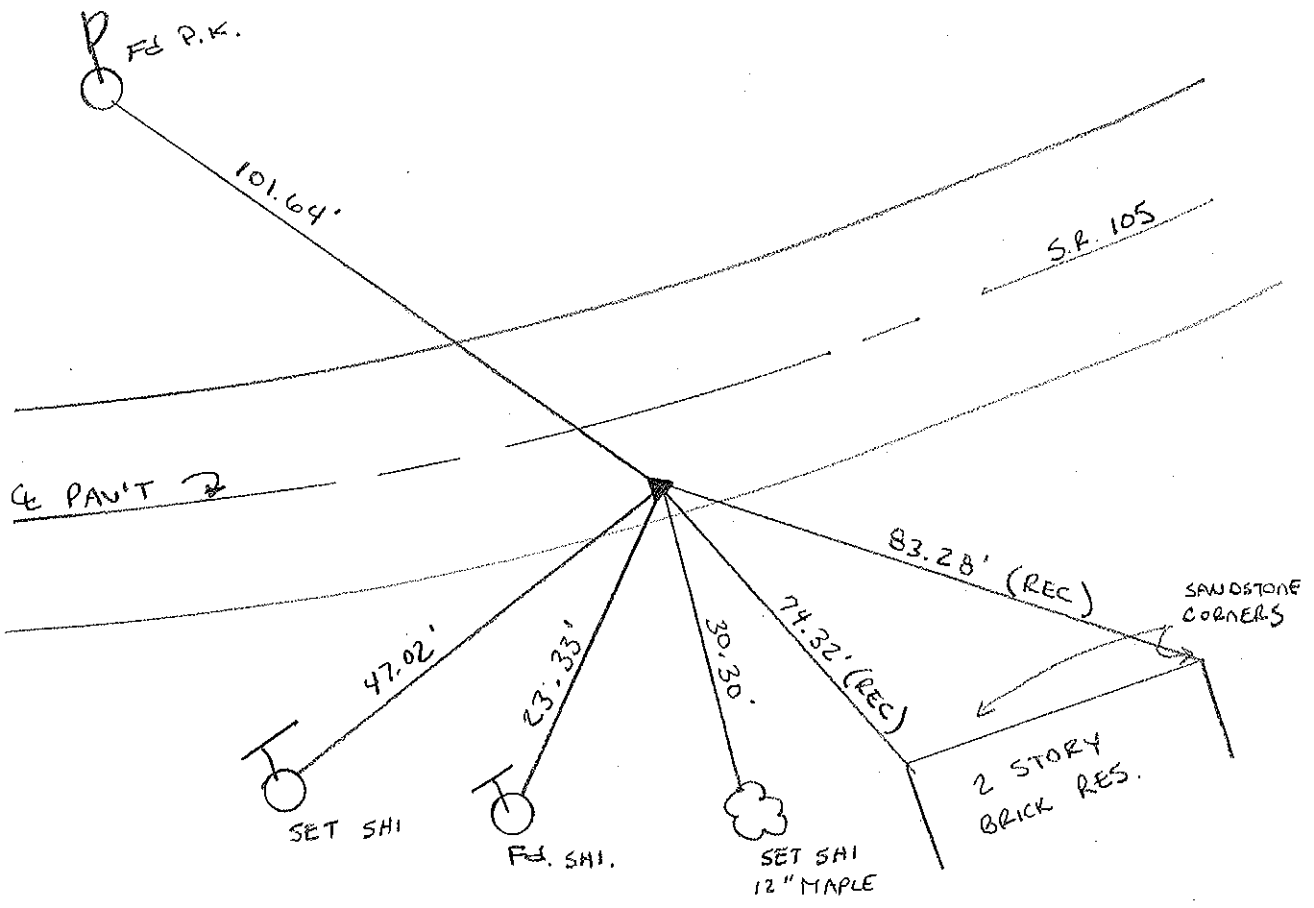
~~LEFT - C.PAV'T.~~ - RIGHT 8.0' RT.

2.4 TO RT. EDGE PAVEMENT

S.L.M. 265 + 93



RESET PK/WASHER  
 6-22-00  
 K.P.M.



# O.D.O.T. DISTRICT 2 SURVEY OFFICE

PERSONNEL \_\_\_\_\_

REFERENCE NO. 58

SHEET \_\_\_\_\_ OF \_\_\_\_\_

NOTES Ripple

DRAWN 10/1/87

H.C. Geyman

DATE 5/26/87

ROUTE 105

R.C. \_\_\_\_\_

WEATHER SUNNY

COUNTY OTTAWA

\_\_\_\_\_

TEMP. 80°

TOWNSHIP Harris

\_\_\_\_\_

SECTION 9

T 6 N R 14 E

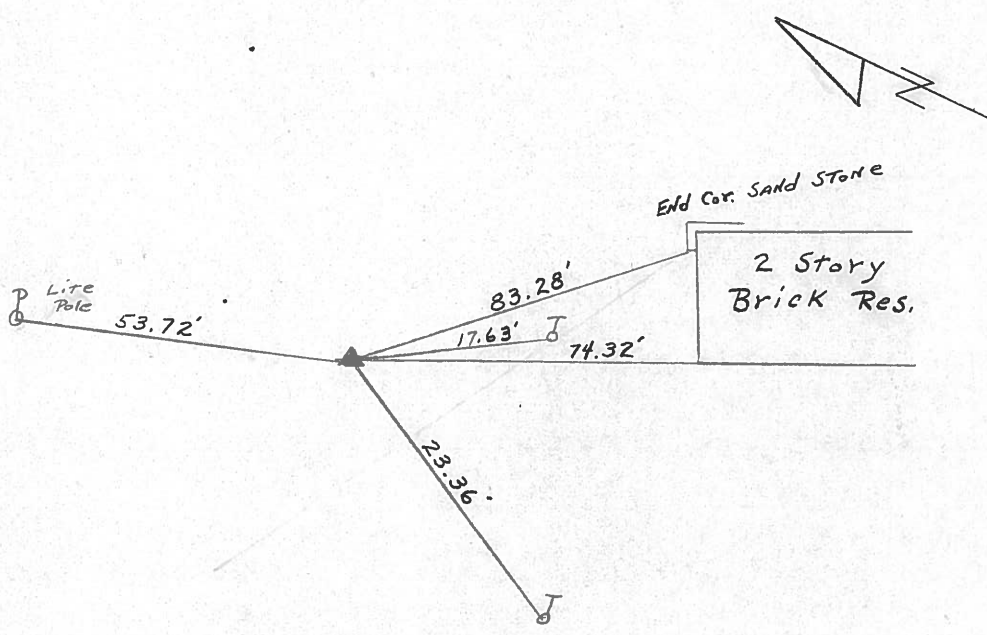
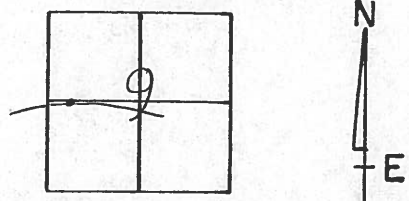
TYPE MONUMENT P.K. Nail & washer

ON SURFACE - BELOW R.R. Spk.

LEFT - € PAV'T. - RIGHT 7 1/2' RT. €

TO \_\_\_\_\_ EDGE PAVEMENT

S.L.M. 265+52



P.I.

7 1/2' RT. €



PERSONNEL TITLE PERSONNEL TITLE  
 Schneider \_\_\_\_\_  
 Mosser \_\_\_\_\_  
 Barbour \_\_\_\_\_

COUNTY Ottawa DATE 3-6-74  
 S. R. 105 WEATHER Cloudy  
 SEC. 9 TEMP. 45°

DESCRIPTION Harris Twp

JOB NO. \_\_\_\_\_

